

Flexible bridge handles

Technopolymer with elastomer

MATERIAL

Polypropylene based (PP) technopolymer with elastomer (TPE), grey/black colour, matte finish.

SCREW-COVERS

Technopolymer in Ergostyle colours, matte finish; supplied with the handle, press-fit assembly, removable by a screwdriver. Available also as accessories sold separately (see table ECA.).

Code	Description	Caps for
29831-*	ECA.B1-*	EBP.140-FLX / EBP.180-FLX

* Complete with colour index (C1, ..., C6)

STANDARD EXECUTION

Brass bosses with pass-through holes for cylindrical-head screws with hexagon socket.

FEATURES AND APPLICATIONS

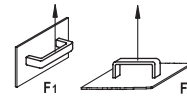
EBP.FLX flexible handle (elastomer) can be assembled on curved surfaces with diameters between 300 and 800 mm. For diameters exceeding 800 mm, EBP. standard handle can be used.

TECHNICAL DATA

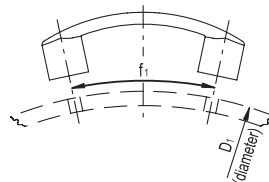
Tensile stress: F1 and F2 values reported in the table represent the maximum limit value under which EBP.FLX handle can perform elastic deformation. Impact strength does not apply in this case due to the high elastic features of the product.



ERGOSTYLE

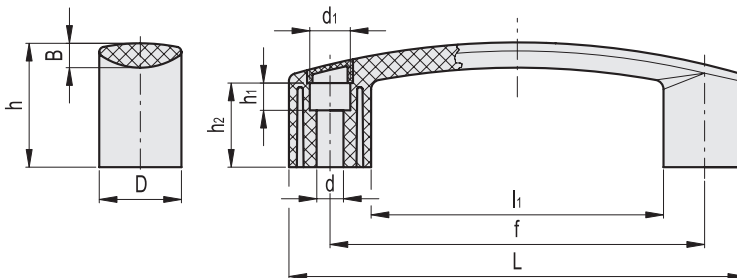
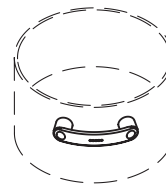


Application EBP.FLX



Calculation of (curved) centers distance f_1

EBP.140	$f_1 = 0,044 \times D_1 + 81,5$
EBP.180	$f_1 = 0,056 \times D_1 + 102,8$



* Complete with colour index, example: 260262-C2 EBP.140-8-FLX-C2

C1	C2	C3	C4	C5	C6	C17
RAL7021	RAL2004	RAL7035	RAL1021	RAL5024	RAL3000	RAL6017

Code	Description	L	f	d	d1	D	h	h1	h2	B	l1	F1 [N]	F2 [N]	⚖️
260262-*	EBP.140-8-FLX-*	144	117	8.5	13.5	26	39	8.5	26.5	8.5	92	1000	1000	56
260361-*	EBP.180-8-FLX-*	178	150	8.5	13.5	28	45	14	32	9.5	122	1000	1000	67

X-ON Electronics

Largest Supplier of Electrical and Electronic Components

Click to view similar products for [Mounting Fixings](#) category:

Click to view products by [Elesa & Ganter](#) manufacturer:

Other Similar products are found below :

[007310](#) [007541](#) [6-141-P](#) [620HA038NF09](#) [620HA038NF11](#) [71-074914-006](#) [71-146610-6H](#) [712HA170B23128-N](#) [75-69116-8S](#) [75-69211-3P](#)
[75-69224-28P](#) [75-69224-5S](#) [770-006A109](#) [770-006A109R](#) [770-006A207](#) [770-006A208W1](#) [770-006A209](#) [770-006A306](#) [770-006A703W1](#)
[770-006A704](#) [770-006A704W1](#) [770-006A705](#) [770-006A706](#) [770-006A706W1](#) [770-006A707](#) [770-006A709](#) [770-007A203](#) [770-007A203W1](#)
[770-007A204W1](#) [770-007A207W1](#) [770-007A703](#) [770-007A704W1](#) [770-007A706](#) [770-007A707W1](#) [770-010Y208](#) [770-010Y308](#) [770-](#)
[010Y705](#) [770-010Y706](#) [770-010Y707W1](#) [770-011T201](#) [770-011T203](#) [770-011T701W1](#) [770-011T702](#) [770-011T702W1](#) [770-011T703](#) [770-](#)
[013311](#) [770-013312](#) [770-013709](#) [770-013711](#) [770-013711W1](#)