

Flat knurled nuts

Steel / Stainless Steel

SPECIFICATION

Version in Steel

- Tensile strength class 5
- visible face fine turned
- blackened
- zinc plated, blue passivated **ZB**

Version in Stainless Steel AISI 303 NI

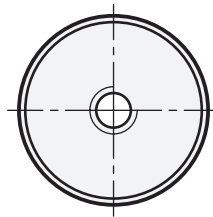
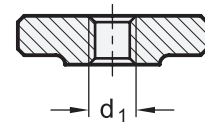
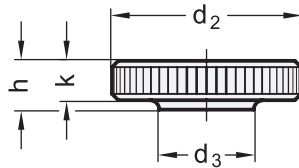
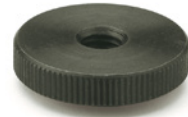
- matte shot-blasted

INFORMATION

Flat knurled nuts DIN 467 are suitable for universal use and can be tightened and loosened easily without tools. A nut with thread M12 is also available in addition to the types defined in the DIN standard.

TECHNICAL INFORMATION

- Stainless Steel characteristics (see page A26)
- Strength values of screws (see page A20)



DIN 467

Description	d1	d2	d3	h	k	⚖️
DIN 467-M3	M 3	12	6	3	2.5	2
DIN 467-M4	M 4	16	8	4	3.5	5
DIN 467-M5	M 5	20	10	5	4	9
DIN 467-M6	M 6	24	12	6	5	17
DIN 467-M8	M 8	30	16	8	6	32
DIN 467-M10	M 10	36	20	10	8	62
DIN 467-M12	M 12	40	22	12	10	92

DIN 467-ZB

Description	d1	d2	d3	h	k	⚖️
DIN 467-M3-ZB	M 3	12	6	3	2.5	2
DIN 467-M4-ZB	M 4	16	8	4	3.5	5
DIN 467-M5-ZB	M 5	20	10	5	4	9
DIN 467-M6-ZB	M 6	24	12	6	5	17
DIN 467-M8-ZB	M 8	30	16	8	6	32
DIN 467-M10-ZB	M 10	36	20	10	8	62
DIN 467-M12-ZB	M 12	40	22	12	10	92

DIN 467-NI

STAINLESS STEEL

Description	d1	d2	d3	h	k	⚖️
DIN 467-M3-NI	M 3	12	6	3	2.5	2
DIN 467-M4-NI	M 4	16	8	4	3.5	5
DIN 467-M5-NI	M 5	20	10	5	4	9
DIN 467-M6-NI	M 6	24	12	6	5	17
DIN 467-M8-NI	M 8	30	16	8	6	32
DIN 467-M10-NI	M 10	36	20	10	8	62
DIN 467-M12-NI	M 12	40	22	12	10	92

X-ON Electronics

Largest Supplier of Electrical and Electronic Components

Click to view similar products for [Knobs & Dials](#) category:

Click to view products by [Elesa & Ganter](#) manufacturer:

Other Similar products are found below :

[790-1202](#) [790-2226](#) [8529](#) [8547](#) [85-559](#) [8573](#) [11K5015-EMNB](#) [11K5015-EMNG](#) [1770](#) [P400S-08-D6-N](#) [KNP700A1/4](#) [3045B](#) [AL811BA18](#)
[AR22PY-122B](#) [PKJ50B18](#) [277A](#) [348003](#) [42000B38](#) [5006](#) [56008-001](#) [411](#) [420037B14](#) [WA-102B](#) [WA-103](#) [WA-109B](#) [WA-1550](#) [WA-](#)
[1600-P](#) [WA-2300](#) [WA-4100](#) [WA-4108-P](#) [52-928.20](#) [52-928.9](#) [8517](#) [8529](#) [8545](#) [8572](#) [WA-4104](#) [WA-4103](#) [WA-1202](#) [WA-104B](#) [WA-103B](#)
[WA-102](#) [6126](#) [MS91528-0N1B](#) [7-1437622-0](#) [790-1208](#) [790-1370-MS](#) [8-1437622-6](#) [P209061-001](#) [P675S-06-D6-W](#)