

## Lifting eye bolts

Steel / Stainless Steel

### SPECIFICATION

#### Version in Steel ST

- Steel C 15 E
- drop-forged
- annealed
- contact face machined
- zinc plated, blue passivated

#### Version in Stainless Steel A2 NI

- drop-forged
- contact face machined

#### Version in Stainless Steel A4

- drop-forged
- contact face machined

### INFORMATION

The following guidelines for lifting eye bolts DIN 580 have to be observed in addition to the load values given in the above table:  
The eye bolt must be of fully screwed in to achieve a perfect contact between the two mating faces.

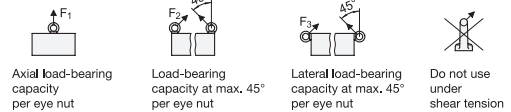
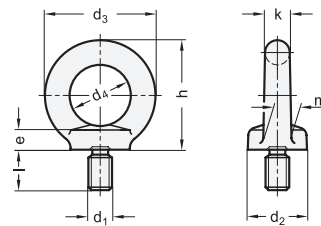
Both threads must be of a equal length and the base material of equal strength to that of the bolt.

Operating instructions with more details and specifications are included with every delivery.

The official DIN standard sheet specifies the additional sizes M42, M48, M56, M64, M72 x 6, M80 x 6 and M100 x 6.

### TECHNICAL INFORMATION

- Stainless Steel characteristics (see page A26)



### DIN 580

Description	d1	d2	d3	d4	e	h	k	l	m	F1 max. in N	F2 max. in N	F3 max. in N	△
DIN 580-M8-ST	M 8	20	36	20	6	36	8	13	10	1400	1000	700	60
DIN 580-M10-ST	M 10	25	45	25	8	45	10	17	12	2300	1700	1150	102
DIN 580-M12-ST	M 12	30	54	30	10	53	12	20.5	14	3400	2400	1700	180
DIN 580-M16-ST	M 16	35	63	35	12	62	14	27	16	7000	5000	3500	280
DIN 580-M20-ST	M 20	40	72	40	14	71	16	30	19	12000	8600	6000	450
DIN 580-M24-ST	M 24	50	90	50	18	90	20	36	24	18000	12900	9000	900
DIN 580-M30-ST	M 30	65	108	60	22	109	24	45	28	32000	23000	16000	1600
DIN 580-M36-ST	M 36	75	126	70	26	128	28	54	32	46000	33000	23000	2400

### DIN 580-NI

STAINLESS STEEL

Description	d1	d2	d3	d4	e	h	k	l	m	F1 max. in N	F2 max. in N	F3 max. in N	△
DIN 580-M8-NI	M 8	20	36	20	6	36	8	13	10	1400	1000	700	55
DIN 580-M10-NI	M 10	25	45	25	8	45	10	17	12	2300	1700	1150	120
DIN 580-M12-NI	M 12	30	54	30	10	53	12	20.5	14	3400	2400	1700	160
DIN 580-M16-NI	M 16	35	63	35	12	62	14	27	16	7000	5000	3500	300
DIN 580-M20-NI	M 20	40	72	40	14	71	16	30	19	12000	8600	6000	450
DIN 580-M24-NI	M 24	50	90	50	18	90	20	36	24	18000	12900	9000	840

### DIN 580-A4

STAINLESS STEEL

Description	d1	d2	d3	d4	e	h	k	l	m	F1 max. in N	F2 max. in N	F3 max. in N	△
DIN 580-M10-A4	M 10	25	45	25	8	45	10	17	12	2300	1700	1150	102
DIN 580-M12-A4	M 12	30	54	30	10	53	12	20.5	14	3400	2400	1700	172
DIN 580-M16-A4	M 16	35	63	35	12	62	14	27	16	7000	5000	3500	312
DIN 580-M20-A4	M 20	40	72	40	14	71	16	30	19	12000	8600	6000	439
DIN 580-M24-A4	M 24	50	90	50	18	90	20	36	24	18000	12900	9000	918

## X-ON Electronics

Largest Supplier of Electrical and Electronic Components

*Click to view similar products for [Screws & Fasteners](#) category:*

*Click to view products by [Elesa & Ganter](#) manufacturer:*

Other Similar products are found below :

[5721-1440-1/4-SS](#) [593503FX](#) [0098.0094](#) [0098.9206](#) [0098.9219](#) [0098.9221](#) [0098.9262](#) [596-2114-013](#) [59781-4](#) [59781-6](#) [0098.0026](#)  
[0098.9210](#) [0098.9212](#) [60227-01](#) [60227-04](#) [60227-08](#) [60228-09](#) [618-00001](#) [62153-03](#) [62153-11](#) [M316-KSSTMCZ100](#) [M3440-SS](#) [M3442-SS](#) [M3448-SS](#) [6291A](#) [6292-1](#) [6-306105-9](#) [6-306131-4](#) [690432-1](#) [699161-000](#) [700989](#) [7-18023-1](#) [7-21002-8](#) [7230-3](#) [7235-3](#) [7248-1](#) [7248-2](#)  
[73542-02](#) [CAPTIVE SHORT THUMBSCREW](#) [745564-1](#) [748174-2](#) [F03-02](#) [SUS316](#) [F1209](#) [751-00001](#) [80011](#) [809704-1](#) [8700](#) [8860220](#)  
[9047](#) [95000002B](#) [9885-2](#)