

Lifting eye nuts

Steel / Stainless Steel

SPECIFICATION

Version in Steel ST

- Steel C 15 E
- drop-forged
- annealed
- contact face machined
- zinc plated, blue passivated

Version in Stainless Steel A2 NI

- drop-forged
- contact face machined

Version in Stainless Steel A4

- drop-forged
- contact face machined

INFORMATION

The following guidelines of the lifting eye nuts DIN 582 have to be observed in addition to the load values given in the above table:

The eye nut must be of fully screwed in to achieve a perfect contact between the two mating faces.

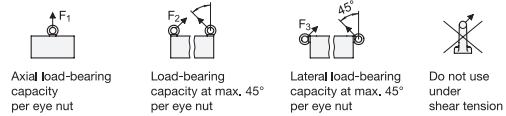
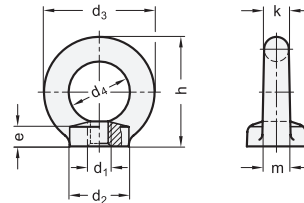
Both threads must be of an equal length and the base material of equal strength to that of the nut.

Operating instructions with more details and specifications are included with every delivery.

The official DIN standard sheet specifies the additional sizes M42, M48, M56, M64, M72 x 6, M80 x 6 and M100 x 6.

TECHNICAL INFORMATION

- Stainless Steel characteristics (see page A26)



DIN 582

| Description | d1 | d2 | d3 | d4 | e | h | k | m | F1 max. in N | F2 max. in N | F3 max. in N | ⚖️ |
|----------------|------|----|-----|----|-----|-----|----|----|--------------|--------------|--------------|------|
| DIN 582-M8-ST | M 8 | 20 | 36 | 20 | 8,5 | 36 | 8 | 10 | 1400 | 1000 | 700 | 50 |
| DIN 582-M10-ST | M 10 | 25 | 45 | 25 | 10 | 45 | 10 | 12 | 2300 | 1700 | 1150 | 100 |
| DIN 582-M12-ST | M 12 | 30 | 54 | 30 | 11 | 53 | 12 | 14 | 3400 | 2400 | 1700 | 155 |
| DIN 582-M16-ST | M 16 | 35 | 63 | 35 | 13 | 62 | 14 | 16 | 7000 | 5000 | 3500 | 220 |
| DIN 582-M20-ST | M 20 | 40 | 72 | 40 | 16 | 71 | 16 | 19 | 12000 | 8600 | 6000 | 360 |
| DIN 582-M24-ST | M 24 | 50 | 90 | 50 | 20 | 90 | 20 | 24 | 18000 | 12900 | 9000 | 720 |
| DIN 582-M30-ST | M 30 | 65 | 108 | 60 | 25 | 109 | 24 | 28 | 32000 | 23000 | 16000 | 1320 |
| DIN 582-M36-ST | M 36 | 75 | 126 | 70 | 30 | 128 | 28 | 32 | 46000 | 33000 | 23000 | 2130 |

DIN 582-NI

STAINLESS STEEL

| Description | d1 | d2 | d3 | d4 | e | h | k | m | F1 max. in N | F2 max. in N | F3 max. in N | ⚖️ |
|----------------|------|----|----|----|-----|----|----|----|--------------|--------------|--------------|-----|
| DIN 582-M8-NI | M 8 | 20 | 36 | 20 | 8,5 | 36 | 8 | 10 | 1400 | 1000 | 700 | 50 |
| DIN 582-M10-NI | M 10 | 25 | 45 | 25 | 10 | 45 | 10 | 12 | 2300 | 1700 | 1150 | 100 |
| DIN 582-M12-NI | M 12 | 30 | 54 | 30 | 11 | 53 | 12 | 14 | 3400 | 2400 | 1700 | 160 |
| DIN 582-M16-NI | M 16 | 35 | 63 | 35 | 13 | 62 | 14 | 16 | 7000 | 5000 | 3500 | 240 |
| DIN 582-M20-NI | M 20 | 40 | 72 | 40 | 16 | 71 | 16 | 19 | 12000 | 8600 | 6000 | 340 |
| DIN 582-M24-NI | M 24 | 50 | 90 | 50 | 20 | 90 | 20 | 24 | 18000 | 12900 | 9000 | 650 |

DIN 582-A4

STAINLESS STEEL

| Description | d1 | d2 | d3 | d4 | e | h | k | m | F1 max. in N | F2 max. in N | F3 max. in N | ⚖️ |
|----------------|------|----|----|----|----|----|----|----|--------------|--------------|--------------|-----|
| DIN 582-M10-A4 | M 10 | 25 | 45 | 25 | 10 | 45 | 10 | 12 | 2300 | 1700 | 1150 | 88 |
| DIN 582-M12-A4 | M 12 | 30 | 54 | 30 | 11 | 53 | 12 | 14 | 3400 | 2400 | 1700 | 167 |
| DIN 582-M16-A4 | M 16 | 35 | 63 | 35 | 13 | 62 | 14 | 16 | 7000 | 5000 | 3500 | 249 |
| DIN 582-M20-A4 | M 20 | 40 | 72 | 40 | 16 | 71 | 16 | 19 | 12000 | 8600 | 6000 | 380 |
| DIN 582-M24-A4 | M 24 | 50 | 90 | 50 | 20 | 90 | 20 | 24 | 18000 | 12900 | 9000 | 753 |



X-ON Electronics

Largest Supplier of Electrical and Electronic Components

Click to view similar products for [Screws & Fasteners](#) category:

Click to view products by [Elesa & Ganter](#) manufacturer:

Other Similar products are found below :

[5721-1440-1/4-SS](#) [593503FX](#) [0098.0094](#) [0098.9206](#) [0098.9219](#) [0098.9221](#) [0098.9262](#) [596-2114-013](#) [59781-4](#) [59781-6](#) [0098.0026](#)
[0098.9210](#) [0098.9212](#) [60227-01](#) [60227-04](#) [60227-08](#) [60228-09](#) [618-00001](#) [62153-03](#) [62153-11](#) [M316-KSSTMCZ100](#) [M3440-SS](#) [M3442-SS](#) [M3448-SS](#) [6291A](#) [6292-1](#) [6-306105-9](#) [6-306131-4](#) [690432-1](#) [699161-000](#) [700989](#) [7-18023-1](#) [7-21002-8](#) [7230-3](#) [7235-3](#) [7248-1](#) [7248-2](#)
[73542-02](#) [CAPTIVE SHORT THUMBSCREW](#) [745564-1](#) [748174-2](#) [F03-02](#) [SUS316](#) [F1209](#) [751-00001](#) [80011](#) [809704-1](#) [8700](#) [8860220](#)
[9047](#) [95000002B](#) [9885-2](#)