

## Threaded plugs

Steel / Stainless Steel, with conical thread

### SPECIFICATION

#### Types

- Type **A**: without micro encapsulation
- Type **GPC**: with micro encapsulation

#### Version in Steel ST

- ultrasonically and tensile tested
- zinc plated, blue passivated

#### Version in Stainless Steel AISI 303 NI

#### Thread coating GPC

Precote 5 (see page A25)



### INFORMATION

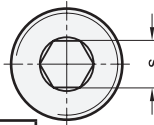
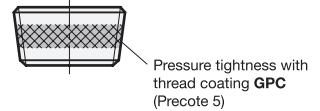
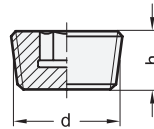
Threaded plugs DIN 906 are used to close bore holes with cylindrical internal thread.

The tightness depends on the medium, pressure, temperature and material pairing. The design with GPC thread coating provides a higher degree of safety.

The official DIN 906 standard sheet also provides for thread sizes M33x2; M38x1.5; M39x2; M52x1.5; M52x2; M56x2 and M60x2.

### TECHNICAL INFORMATION

- Stainless Steel characteristics (see page A26)



\* Complete with type index of the Threaded plugs

A	GPC
without micro encapsulation	with micro encapsulation

### DIN 906

Description	d	h	s	⚖
DIN 906-ST-M6x1-*	M 6 x 1	6	3	2
DIN 906-ST-M8x1-*	M 8 x 1	8	4	2
DIN 906-ST-M10x1-*	M 10 x 1	8	5	3
DIN 906-ST-M12x1,5-*	M 12 x 1.5	10	6	6
DIN 906-ST-M14x1,5-*	M 14 x 1.5	10	7	8
DIN 906-ST-M16x1,5-*	M 16 x 1.5	10	8	10
DIN 906-ST-M18x1,5-*	M 18 x 1.5	10	8	14
DIN 906-ST-M20x1,5-*	M 20 x 1.5	10	10	17
DIN 906-ST-M22x1,5-*	M 22 x 1.5	10	10	22
DIN 906-ST-M24x1,5-*	M 24 x 1.5	12	12	30
DIN 906-ST-M26x1,5-*	M 26 x 1.5	12	12	37
DIN 906-ST-M30x1,5-*	M 30 x 1.5	12	17	45
DIN 906-ST-M36x1,5-*	M 36 x 1.5	15	19	86
DIN 906-ST-M42x1,5-*	M 42 x 1.5	18	22	142
DIN 906-ST-M45x1,5-*	M 45 x 1.5	18	22	163
DIN 906-ST-M48x1,5-*	M 48 x 1.5	20	24	210
DIN 906-ST-R1/8-*	R 1/8	8	5	3
DIN 906-ST-R1/4-*	R 1/4	10	7	7
DIN 906-ST-R3/8-*	R 3/8	10	8	12
DIN 906-ST-R1/2-*	R 1/2	10	10	19
DIN 906-ST-R3/4-*	R 3/4	12	12	37
DIN 906-ST-R1-*	R 1	12	17	57
DIN 906-ST-R11/4-*	R 11/4	18	22	133
DIN 906-ST-R11/2-*	R 11/2	20	24	200

Weight A

\* Complete with type index of the Threaded plugs

A	GPC
without micro encapsulation	with micro encapsulation

### DIN 906-NI

### STAINLESS STEEL

Description	d	h	s	⚖
DIN 906-NI-M6x1-*	M 6 x 1	6	3	2
DIN 906-NI-M8x1-*	M 8 x 1	8	4	2
DIN 906-NI-M10x1-*	M 10 x 1	8	5	4
DIN 906-NI-M12x1,5-*	M 12 x 1.5	10	6	6
DIN 906-NI-M14x1,5-*	M 14 x 1.5	10	7	9
DIN 906-NI-M16x1,5-*	M 16 x 1.5	10	8	11
DIN 906-NI-M18x1,5-*	M 18 x 1.5	10	8	15
DIN 906-NI-M20x1,5-*	M 20 x 1.5	10	10	19
DIN 906-NI-M22x1,5-*	M 22 x 1.5	10	10	23
DIN 906-NI-M24x1,5-*	M 24 x 1.5	12	12	33
DIN 906-NI-R1/8-*	R 1/8	8	5	3
DIN 906-NI-R1/4-*	R 1/4	10	7	7
DIN 906-NI-R3/8-*	R 3/8	10	8	12
DIN 906-NI-R1/2-*	R 1/2	10	10	18
DIN 906-NI-R3/4-*	R 3/4	12	12	39
DIN 906-NI-R1-*	R 1	12	17	63

Weight A

## X-ON Electronics

Largest Supplier of Electrical and Electronic Components

*Click to view similar products for [Mounting Fixings](#) category:*

*Click to view products by [Elesa & Ganter](#) manufacturer:*

Other Similar products are found below :

[007310](#) [007541](#) [6-141-P](#) [620HA038NF09](#) [620HA038NF11](#) [71-074914-006](#) [71-146610-6H](#) [712HA170B23128-N](#) [71-441549-19S](#) [71-490451-4H](#) [75-69211-3P](#) [75-69220-27S](#) [75-69224-5S](#) [770-006A109](#) [770-006A109R](#) [770-006A207](#) [770-006A208W1](#) [770-006A209](#) [770-006A306](#) [770-006A703W1](#) [770-006A704](#) [770-006A704W1](#) [770-006A705](#) [770-006A706](#) [770-006A706W1](#) [770-006A707](#) [770-006A709](#) [770-007A203](#) [770-007A203W1](#) [770-007A204W1](#) [770-007A207W1](#) [770-007A703](#) [770-007A704W1](#) [770-007A706](#) [770-007A707W1](#) [770-010Y208](#) [770-010Y308](#) [770-010Y705](#) [770-010Y706](#) [770-010Y707W1](#) [770-011T201](#) [770-011T203](#) [770-011T701W1](#) [770-011T702](#) [770-011T702W1](#) [770-011T703](#) [770-013210W1](#) [770-013311](#) [770-013312](#) [770-013709](#)