

Threaded plugs

Steel, zinc plated

SPECIFICATION

Types

- Type **A**: without gasket
- Type **AC**: with gasket in copper
- Type **AA**: with gasket in aluminium

Steel **ST**

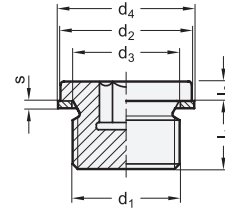
- Tensile strength class 5.8
- ultrasonically and tensile tested
- zinc plated, nano-passivated

INFORMATION

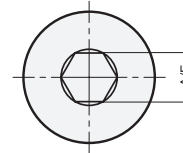
The gaskets in types AC and AA correspond to the gaskets DIN 7603 (see page 1682), type A (flat gaskets).

ON REQUEST

- Stainless Steel version (NI)



Screw-in plug to DIN 3852-1 Type A



* Complete with type index of the Threaded plugs

A AC AA

DIN 908

Description	d1	d2 h14	d3	d4	l1 ±0.2	l2 +0.5	s	A/F	⚖
DIN 908-ST-M8x1-*	M 8 x 1	12	8.3	11.5	8	3	1	4	4
DIN 908-ST-M10x1-*	M 10 x 1	14	10.3	13.5	8	3	1	5	6
DIN 908-ST-M12x1.5-*	M 12 x 1.5	17	12.3	16	12	3	1.5	6	11
DIN 908-ST-M14x1.5-*	M 14 x 1.5	19	14.3	18	12	3	1.5	6	16
DIN 908-ST-M16x1.5-*	M 16 x 1.5	21	16.3	20	12	3	1.5	8	20
DIN 908-ST-M18x1.5-*	M 18 x 1.5	23	18.3	22	12	4	1.5	8	29
DIN 908-ST-M20x1.5-*	M 20 x 1.5	25	20.3	24	14	4	1.5	10	38
DIN 908-ST-M22x1.5-*	M 22 x 1.5	27	22.3	27	14	4	1.5	10	55
DIN 908-ST-M24x1.5-*	M 24 x 1.5	29	24.3	29	14	4	2	12	60
DIN 908-ST-M26x1.5-*	M 26 x 1.5	31	26.3	31	16	4	2	12	73
DIN 908-ST-M27x2-*	M 27 x 2	32	27.3	32	16	4	2	12	75
DIN 908-ST-M30x1.5-*	M 30 x 1.5	36	30.3	36	16	4	2	17	84
DIN 908-ST-M33x2-*	M 33 x 2	39	33.3	39	16	5	2	17	119
DIN 908-ST-M42x2-*	M 42 x 2	49	42.3	49	16	5	2	22	187
DIN 908-ST-M48x2-*	M 48 x 2	55	48.3	55	16	5	2	24	240
DIN 908-ST-G1/8-*	G 1/8	14	10	13.5	8	3	1	5	6
DIN 908-ST-G1/4-*	G 1/4	18	13.4	18	12	3	1.5	6	14
DIN 908-ST-G3/8-*	G 3/8	22	17	21	12	3	1.5	8	22
DIN 908-ST-G1/2-*	G 1/2	26	21.3	26	14	4	1.5	10	41
DIN 908-ST-G3/4-*	G 3/4	32	26.7	32	16	4	2	12	53
DIN 908-ST-G1-*	G 1	39	33.5	39	16	5	2	17	119
DIN 908-ST-G1 1/4-*	G 1 1/4	49	42.2	49	16	5	2	22	185
DIN 908-ST-G1 1/2-*	G 1 1/2	55	48.1	55	16	5	2	24	237

Weight A



X-ON Electronics

Largest Supplier of Electrical and Electronic Components

Click to view similar products for [Mounting Fixings](#) category:

Click to view products by [Elesa & Ganter](#) manufacturer:

Other Similar products are found below :

[007310](#) [007541](#) [61-068636-79P](#) [6-141-P](#) [620HA038NF09](#) [620HA038NF11](#) [M81714/60-12-01](#) [M81714/60-22-01 L/C](#) [70-584649-01P](#) [71-074914-006](#) [71-146610-6H](#) [712HA170B23128-N](#) [71-441864-5S](#) [75-69116-8S](#) [75-69211-3P](#) [75-69220-27S](#) [75-69224-5S](#) [770-006A109](#) [770-006A109R](#) [770-006A207](#) [770-006A208W1](#) [770-006A209](#) [770-006A306](#) [770-006A703W1](#) [770-006A704](#) [770-006A704W1](#) [770-006A705](#) [770-006A706](#) [770-006A706W1](#) [770-006A707](#) [770-006A709](#) [770-007A203](#) [770-007A203W1](#) [770-007A204W1](#) [770-007A207W1](#) [770-007A703](#) [770-007A704W1](#) [770-007A706](#) [770-007A707W1](#) [770-010Y208](#) [770-010Y308](#) [770-010Y705](#) [770-010Y706](#) [770-010Y707W1](#) [770-011T201](#) [770-011T203](#) [770-011T701W1](#) [770-011T702](#) [770-011T702W1](#) [770-011T703](#)