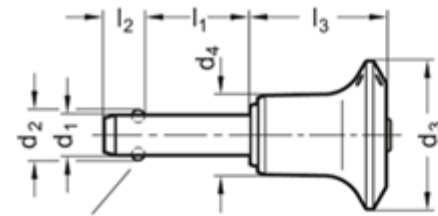


GN 113.10

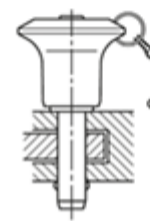
Stainless Steel-Ball lock pins

with Stainless Steel-Knob, plunger material no. AISI 630



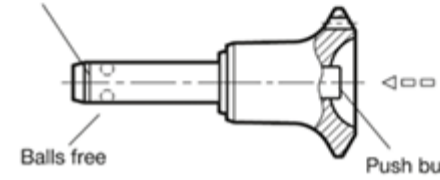
Balls in locking position

Ejemplo de aplicación



Ball chain GN 111

Marking for material AISI 630



Balls free

Push button



	d1 -0.04/-0.08	l1 +0.6	d2	d3	d4	l2 ±1	l3 -0.2	Locating bore H11	Load in kN ≈ Double sided shearing resistance according DIN 50141 (Breaking strength)	
GN 113.10-10-100	10	100	12	27	13.2	9.6	26.8	10	100	99

Show All

Specification

Plunger
Stainless Steel AISI 630
precipitation-hardened

Knob, push button
Stainless Steel AISI 316L

Balls
Stainless Steel AISI 420C

Spring
Stainless Steel German material no. 1.4565

Information

Stainless Steel-Ball lock pins GN 113.10 are used for quick fixing, connecting and locking of various parts and workpieces. A typical application is location pins which have to be often removed and replaced again.

By pressing the spring loaded push button both balls are unlocked and by releasing it, the balls are locked again.

Ball lock pins GN 113.10 have an extreme load capacity, the pin is made of heavy duty, hardened and highly abrasion-resistant Stainless Steel.

Technical information

- [ISO-Fundamental Tolerances](#)
- [Stainless Steel characteristics](#)

Accessory

- Ball chains [GN 111](#)
- Stainless Steel-Ball chains [GN 111.5](#)
- Retaining cables [GN 111.2](#)
- Spiral retaining cables [GN 111.4](#)

X-ON Electronics

Largest Supplier of Electrical and Electronic Components

Click to view similar products for [Crimpers / Crimping Tools](#) category:

Click to view products by [Elesa & Ganter](#) manufacturer:

Other Similar products are found below :

[010-0096](#) [M225201-06](#) [M225202-37](#) [CT150-2-D02](#) [CT150-6-RH07](#) [622-6441LF](#) [M322](#) [6-304052-1](#) [63456-0054](#) [63484-3701](#) [63800-8355](#)
[63819-1875](#) [63819-2875](#) [63819-4475](#) [63823-3475](#) [63827-5375](#) [64001-0975](#) [64001-4175](#) [64005-0175](#) [662903-2](#) [690602-6](#) [7-1579001-9](#) [7-](#)
[23471-1](#) [762637-1](#) [808714-1](#) [811242-5](#) [91362-1](#) [999-50-020083](#) [1-21002-3](#) [1-21002-7](#) [12085270](#) [1-21002-6](#) [1-21113-6](#) [1-22548-4](#) [125442-](#)
[1](#) [DCE.91.073.BVC](#) [DCE.91.090.3MVM](#) [DCE.91.130.5MVU](#) [DCE.91.202.BVCM](#) [1338300-1](#) [1-354003-0](#) [1338301-1](#) [142321](#) [AP105-](#)
[DF11-2428S\(64\)](#) [1456088-1](#) [1490794-1](#) [1-45804-6](#) [1490357-2](#) [1490357-3](#) [AX100749](#)