

# GN 653.2 | Retained screws with knurled grip knob

Steel or stainless steel



- 1
- 2
- 3
- 4
- 5
- 6
- 7
- 8
- 9
- 10
- 11
- 12
- 13
- 14
- 15
- 16
- 17
- 18

## STANDARD EXECUTIONS

- **GN 653.2-ST**: turned and black-oxide steel, class 5 (tensile strength 500 N/mm<sup>2</sup>).
- **GN 653.2-NI**: AISI 303 stainless steel, sandblasted matte finish.

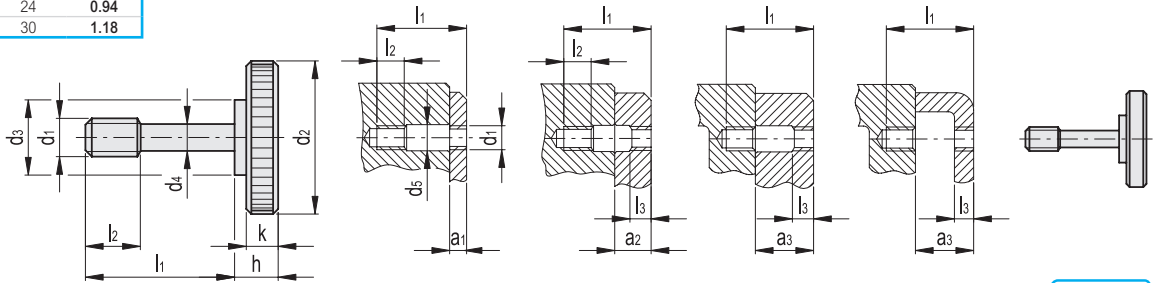
## FEATURES AND APPLICATIONS

The retained screws with GN 653.2 knurled grip knob allow the rapid mounting of machine parts (machine protections, latches, etc.) remaining fastened in the mobile part without risk of loss.



Conversion Table	
1 mm = 0.039 inch	
d2	
mm	inch
16	0.63
20	0.79
24	0.94
30	1.18

Types of assembly



## GN 653.2-ST

METRIC

Code	Description	d1	d2	d3	d4-0.2	d5	l1	l2	l3	h	k	a1	a2	a3	
GN.28005	GN 653.2-M4-15-ST	M4	16	8	3.2	4.5	15	5	2	5.5	3.5	2+4	4+8	8+10	7
GN.28015	GN 653.2-M4-17-ST	M4	16	8	3.2	4.5	17	5	2	5.5	3.5	4+6	6+10	10+12	8
GN.28025	GN 653.2-M4-19-ST	M4	16	8	3.2	4.5	19	5	2	5.5	3.5	6+8	8+12	12+14	9
GN.28033	GN 653.2-M4-21-ST	M4	16	8	3.2	4.5	21	5	2	5.5	3.5	8+10	10+14	14+16	10
GN.28037	GN 653.2-M5-18-ST	M5	20	10	4	5.5	18	6	2.5	6.5	4	2.5+4	4+10.5	10.5+12	13
GN.28041	GN 653.2-M5-20-ST	M5	20	10	4	5.5	20	6	2.5	6.5	4	4+6	6+12	12+14	14
GN.28045	GN 653.2-M5-22-ST	M5	20	10	4	5.5	22	6	2.5	6.5	4	6+8	8+14	14+16	15
GN.28049	GN 653.2-M5-26-ST	M5	20	10	4	5.5	26	6	2.5	6.5	4	8+12	12+16	16+18	16
GN.28053	GN 653.2-M6-24-ST	M6	24	12	4.8	6.5	24	8	3	8	5	3+6	6+13	13+16	23
GN.28057	GN 653.2-M6-26-ST	M6	24	12	4.8	6.5	26	8	3	8	5	6+8	8+16	16+18	24
GN.28061	GN 653.2-M6-30-ST	M6	24	12	4.8	6.5	30	8	3	8	5	8+12	12+18	18+22	25
GN.28065	GN 653.2-M6-34-ST	M6	24	12	4.8	6.5	34	8	3	8	5	12+16	16+22	22+26	27
GN.28069	GN 653.2-M8-30-ST	M8	30	16	6.5	8.5	30	10	4	9	6	4+8	8+16	16+20	44
GN.28073	GN 653.2-M8-34-ST	M8	30	16	6.5	8.5	34	10	4	9	6	8+12	12+20	20+24	46
GN.28077	GN 653.2-M8-38-ST	M8	30	16	6.5	8.5	38	10	4	9	6	12+16	16+24	24+28	48
GN.28081	GN 653.2-M8-42-ST	M8	30	16	6.5	8.5	42	10	4	9	6	16+20	20+28	28+32	50

## GN 653.2-NI

INOX STAINLESS METRIC

Code	Description	d1	d2	d3	d4-0.2	d5	l1	l2	l3	h	k	a1	a2	a3	
GN.28003	GN 653.2-M4-15-NI	M4	16	8	3.2	4.5	15	5	2	5.5	3.5	2+4	4+8	8+10	7
GN.28013	GN 653.2-M4-17-NI	M4	16	8	3.2	4.5	17	5	2	5.5	3.5	4+6	6+10	10+12	8
GN.28023	GN 653.2-M4-19-NI	M4	16	8	3.2	4.5	19	5	2	5.5	3.5	6+8	8+12	12+14	9
GN.28031	GN 653.2-M4-21-NI	M4	16	8	3.2	4.5	21	5	2	5.5	3.5	8+10	10+14	14+16	10
GN.28035	GN 653.2-M5-18-NI	M5	20	10	4	5.5	18	6	2.5	6.5	4	2.5+4	4+10.5	10.5+12	13
GN.28039	GN 653.2-M5-20-NI	M5	20	10	4	5.5	20	6	2.5	6.5	4	4+6	6+12	12+14	14
GN.28043	GN 653.2-M5-22-NI	M5	20	10	4	5.5	22	6	2.5	6.5	4	6+8	8+14	14+16	15
GN.28047	GN 653.2-M5-26-NI	M5	20	10	4	5.5	26	6	2.5	6.5	4	8+12	12+16	16+18	16
GN.28051	GN 653.2-M6-24-NI	M6	24	12	4.8	6.5	24	8	3	8	5	3+6	6+13	13+16	23
GN.28055	GN 653.2-M6-26-NI	M6	24	12	4.8	6.5	26	8	3	8	5	6+8	8+16	16+18	24
GN.28059	GN 653.2-M6-30-NI	M6	24	12	4.8	6.5	30	8	3	8	5	8+12	12+18	18+22	25
GN.28063	GN 653.2-M6-34-NI	M6	24	12	4.8	6.5	34	8	3	8	5	12+16	16+22	22+26	27
GN.28067	GN 653.2-M8-30-NI	M8	30	16	6.5	8.5	30	10	4	9	6	4+8	8+16	16+20	44
GN.28071	GN 653.2-M8-34-NI	M8	30	16	6.5	8.5	34	10	4	9	6	8+12	12+20	20+24	46
GN.28075	GN 653.2-M8-38-NI	M8	30	16	6.5	8.5	38	10	4	9	6	12+16	16+24	24+28	48
GN.28079	GN 653.2-M8-42-NI	M8	30	16	6.5	8.5	42	10	4	9	6	16+20	20+28	28+32	50

Clamping knobs

## X-ON Electronics

Largest Supplier of Electrical and Electronic Components

*Click to view similar products for [Knobs & Dials](#) category:*

*Click to view products by [Elesa & Ganter](#) manufacturer:*

Other Similar products are found below :

[790-1202](#) [790-2226](#) [8529](#) [8547](#) [85-559](#) [8573](#) [11K5015-EMNB](#) [11K5015-EMNG](#) [1770](#) [P400S-08-D6-N](#) [KNP700A1/4](#) [3045B](#) [AL811BA18](#)  
[AR22PY-122B](#) [PKJ50B18](#) [277A](#) [348003](#) [42000B38](#) [5006](#) [56008-001](#) [411](#) [420037B14](#) [WA-102B](#) [WA-103](#) [WA-109B](#) [WA-1550](#) [WA-](#)  
[1600-P](#) [WA-2300](#) [WA-4100](#) [WA-4108-P](#) [52-928.20](#) [52-928.9](#) [8517](#) [8529](#) [8545](#) [8572](#) [WA-4104](#) [WA-4103](#) [WA-1202](#) [WA-104B](#) [WA-103B](#)  
[WA-102](#) [6126](#) [MS91528-0N1B](#) [7-1437622-0](#) [790-1208](#) [790-1370-MS](#) [8-1437622-6](#) [P209061-001](#) [P675S-06-D6-W](#)