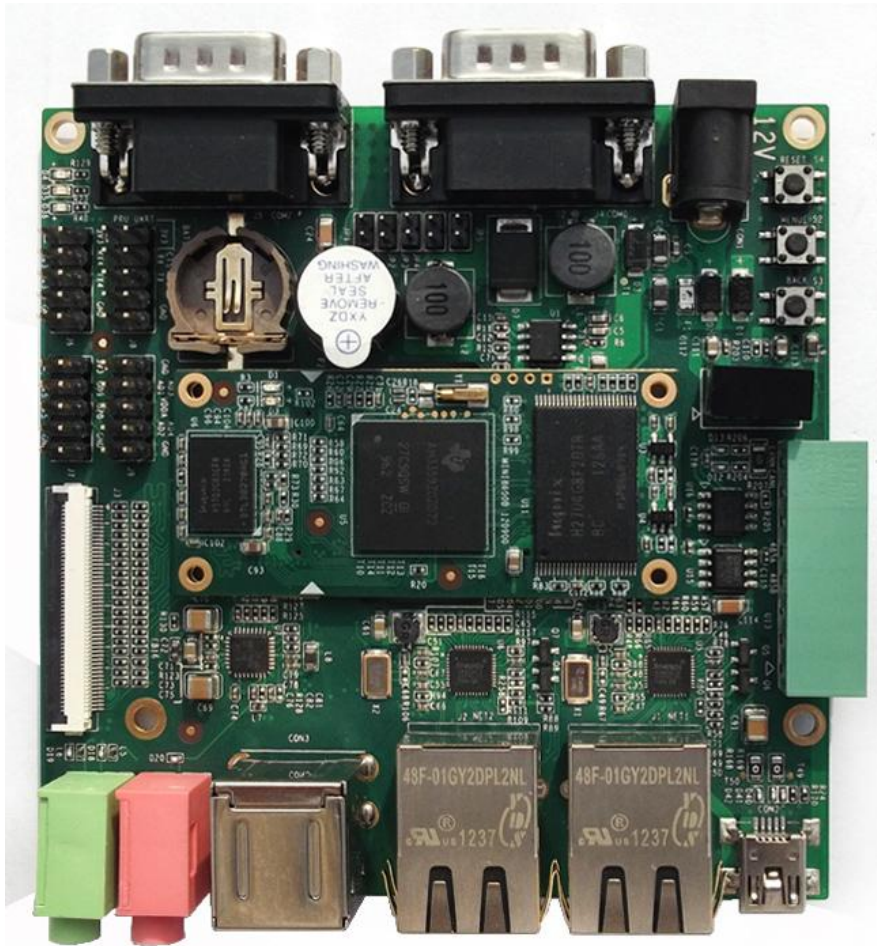


SBC8600B Single Board Computer

- 720MHz TI's Sitara AM3359 ARM Cortex-A8 Microprocessor
- Onboard 512MByte DDR3 SDRAM and 512MByte NAND Flash
- UARTs, 2*USB Host and 1*OTG, 2*Ethernet, CAN, RS485, LCD/TSP, Audio, Buzzer, TF...
- Optional VGA, WiFi, Camera and 3G Modules
- Supports for Linux 3.2.0, Android 2.3 and WinCE 7 OS



SBC8600B Single Board Computer

Overview

The SBC8600B is an excellent high-performance single board computer based on Texas Instruments' 720MHz Sitara AM3359 ARM Cortex-A8 processor. It is driven by a tiny core board Mini8600B which has integrated AM3359 processor, DDR3, Nand Flash and brought out most of the features and signals of the AM3359 CPU through expansion pins. The core board is in combination with a carrier board to extend and provide more features through headers and connectors.

The SBC8600B board comes with a rich set of communication peripherals including six serial ports (2*RS232, 3*TTL, 1*RS485), two 10/100/1000 Mbps Ethernet ports, two USB Host, USB OTG and CAN interfaces, providing an ideal solution for applications requiring remote control and monitoring or mass connectivity. The board also has LCD and touch screen interface, Audio input and output ports, RTC, Buzzer and more other interfaces. Embest offers 4.3 inch and 7 inch LCD panels for user options which contain a 4-wire resistive touch screen as well.

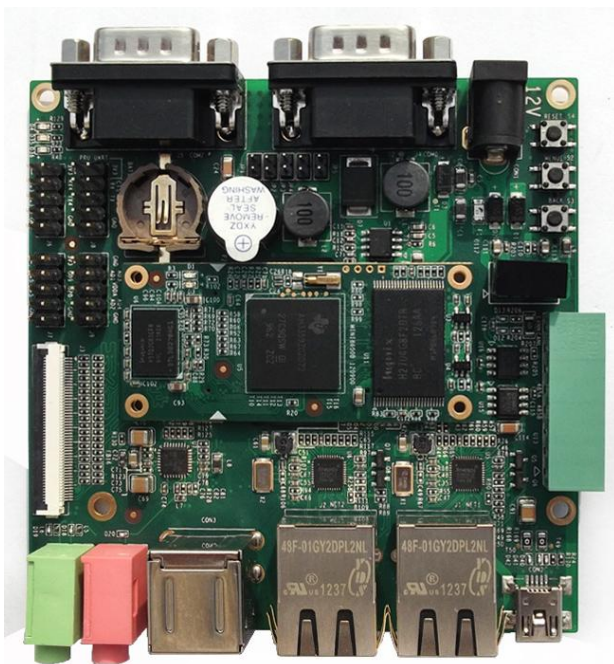
The SBC8600B board is a ready-to-run solution which is provided with Linux 3.2.0, Android 2.3 and WinCE 7 BSP. One DVD is delivered along with the goods which includes the software driver source code and relative documents to help customer better understand this board and start their reference design.

Additionally, Embest offers various optional modules for the SBC8600B which greatly enhanced the functions of this board. Target applications of the SBC8600B board include Industrial Automation, Building Automation, Home control, Consumer Electronics, Security and Instrumentation.

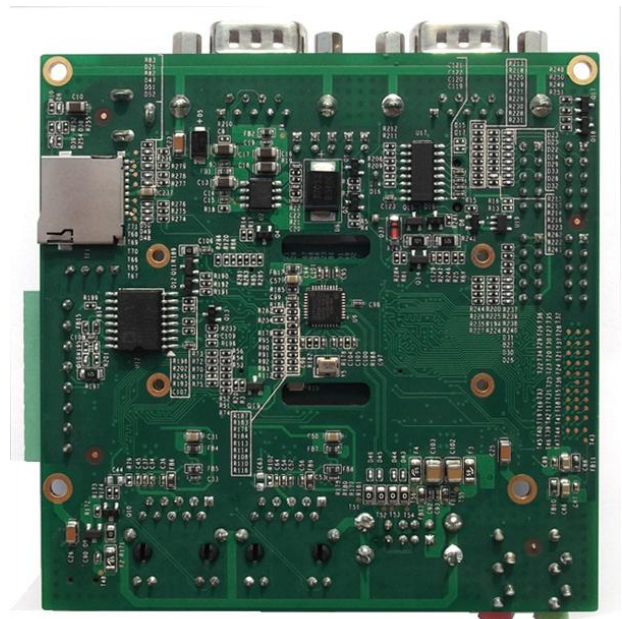
| Optional Module | Description | Interface to Board | Linux | Android | WinCE |
|-----------------|-------------------------------|--------------------|----------|----------|----------|
| VGA8000 | VGA Module | LCD | Support* | Support* | Support* |
| WF8000-U | WiFi Module | USB Host | Support* | Not yet | Not yet |
| CDMA8000-U | 3G Module (CDMA2000 standard) | USB Host | Support* | Not yet | Not yet |
| WCDMA8000-U | 3G Module (WCDMA standard) | USB Host | Support* | Not yet | Not yet |
| CAM8100-U | Digital Camera Module | USB Host | Support* | Not yet | Not yet |
| LVDS8000 | RGB-to-LVDS Module | LCD | Support* | Support* | Support* |

* = Provided with Source Code

= Not Provided with Source Code



Top-View



Bottom-View

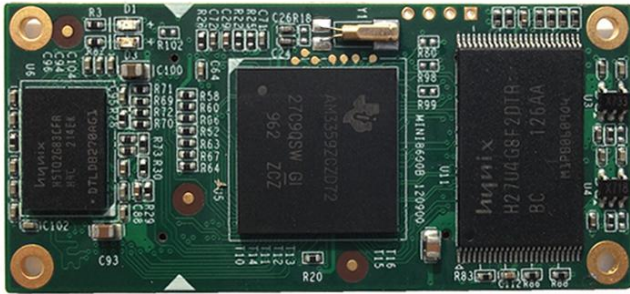


Mini8600B Processor Card (CPU core board of SBC8600B)

Hardware Features

The SBC8600B Single Board Computer is based on TI's AM3359 ARM Cortex-A8 processor and designed with a tiny processor card Mini8600B mounted directly onto an expansion board. The SBC8600B is characterized as follows:

CPU Core Board Mini8600B



Top-View



Bottom-View

Mechanical Parameters

- Dimensions: 60.0 mm x 27.0 mm (8 layer PCB design)
- Working temperature: 0~70 Celsius
- Humidity Range: 20% ~ 90%
- Input Voltage: 3.3V

Processor

- TI AM3359 ARM Cortex-A8 microprocessor
 - 720-MHz ARM Cortex-A8 32-bit RISC MPU
 - NEON™ SIMD Coprocessor
 - 32KB/32KB of L1 Instruction/Data Cache with Single-Error Detection (parity)
 - 256KB of L2 Cache with Error Correcting Code (ECC)
 - SGX530 Graphics Engine
 - Programmable Real-Time Unit Subsystem

Memory

- 2*256MByte DDR3 SDRAM
- 512MByte NAND Flash

Expansion Interfaces and Signals Routed to Pins

- Two 0.4mm space 2*40-pin board-to-board male expansion connectors
 - TFT LCD Interface (support 24-bpp parallel RGB Interface LCD)
 - Two USB 2.0 OTG Ports With Integrated PHY, High-Speed
 - Three inter-integrated circuit (I2C) Bus interfaces
 - Six UART interfaces;
 - One SPI interface;
 - Two 10/100/1000 Mb/s Ethernet MAC (EMAC) with Management Data Input/Output (MDIO) module;
 - A multichannel audio serial ports (McASP);
 - 8-channel 12-bit ADC interfaces;
 - Two 4-line SD/MMC card interfaces;
 - GPMC bus

Expansion Board of SBC8600B

Mechanical Parameters

- Dimensions: 95 mm x 95 mm (6 layer PCB design)
- Input Voltage: +12V
- Temperature Range: 0~70 Celsius
- Humidity Range: 20% ~ 90%

Audio/Video Interfaces

- An Audio input interface (3.5mm audio jack)
- A two-channel audio output interface (3.5mm audio jack)
- A TFT LCD interface / 4 line Resistive Touch Screen interface (50pin FPC connector)

Data Transfer Interfaces

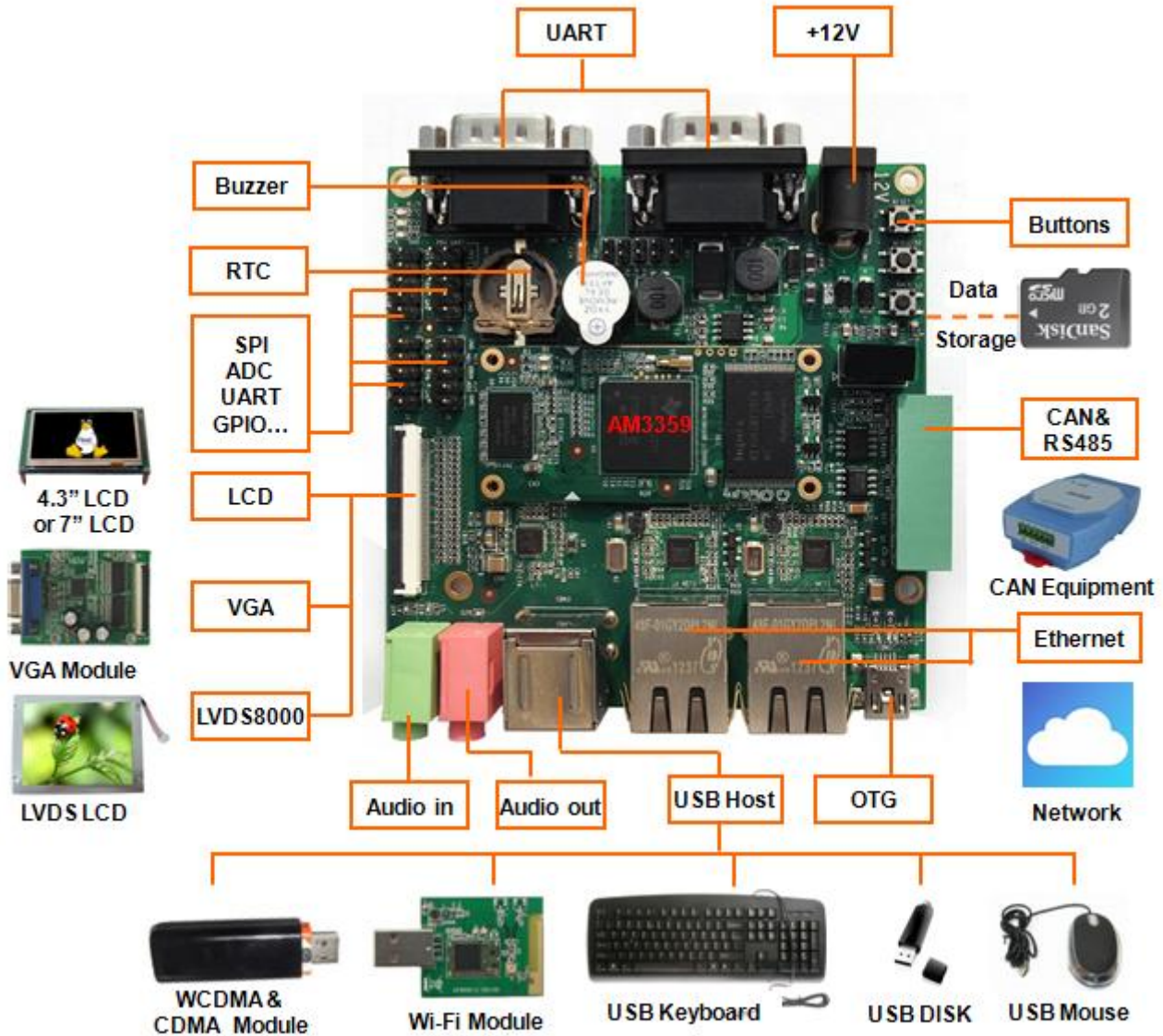
- Serial port:
 - 1 x 3 line Debug serial port, RS232 voltage (UART0 brings out by DB9 connector)
 - 1 x 3 line serial ports, RS232 voltage (UART2 brings out by DB9 connector)
 - 3 x 3 line serial port, TTL voltage (UART3/4/5 brings out by J6 and J7 2.54mm pitch 2*5-pin expansion connectors)
- USB ports:
 - 2 x USB2.0 Host ports with Integrated PHY (High-speed, 480Mbps, USB-A Type)
 - 1 x USB2.0 OTG port with Integrated PHY (High-speed, 480Mbps, Mini-USB Type)
- TF card slot
- 2 x Ethernet: 10/100/1000 Mbps, RJ45 connector (only one Ethernet supported in WinCE)
- 1 x CAN2.0 interface (brings out by 8-pin Phoenix Connector)
- 1 x RS485 interface (brings out by 8-pin Phoenix Connector)
- GPIOs

Input Interfaces and Other Facilities

- One RESET button
- Two User buttons (MENU and BACK)
- One Power indicator
- Two User LEDs
- One Buzzer

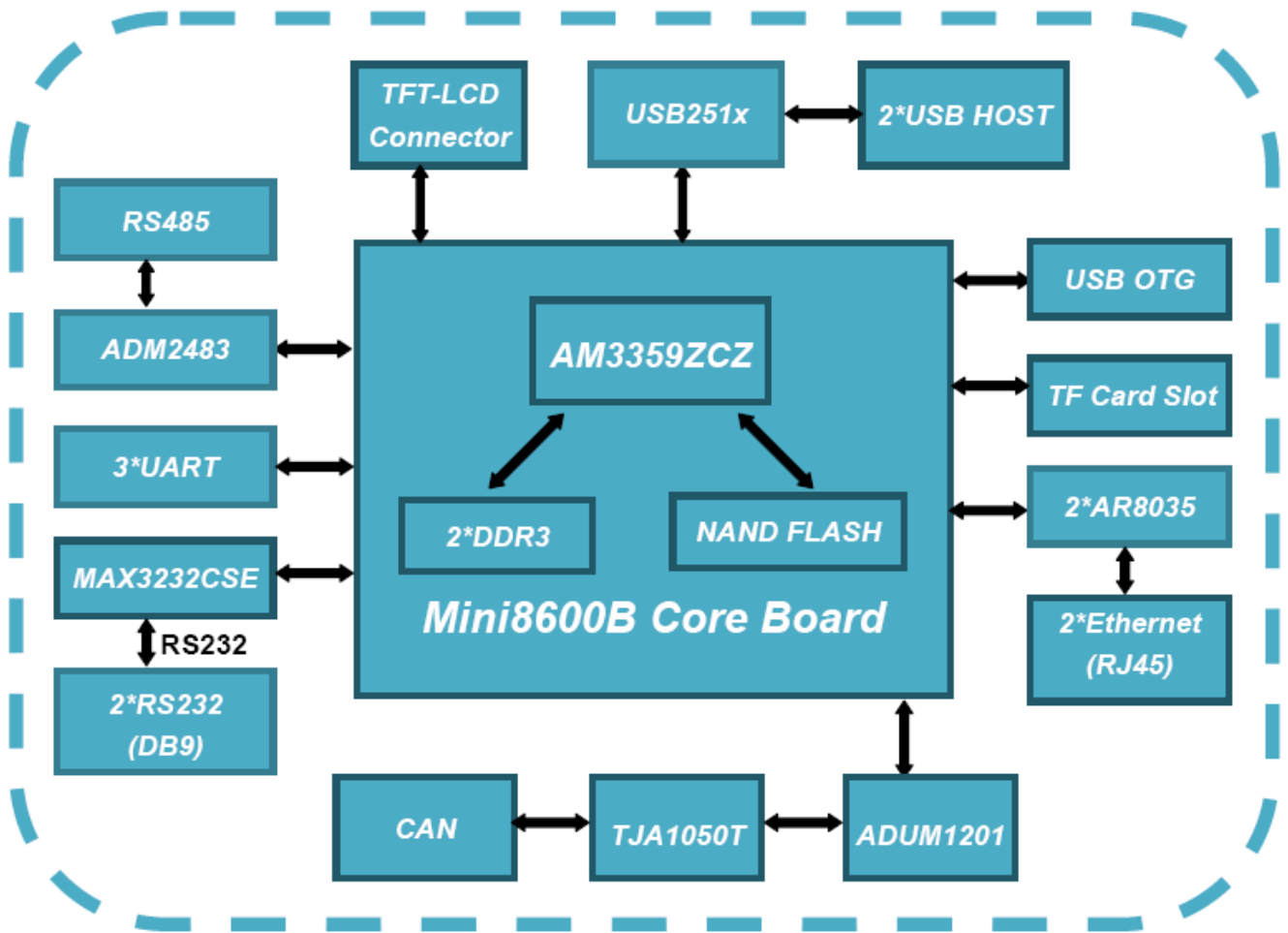
Interface Introduction

The board takes full features of TI's AM3359 microprocessor and has exposed many hardware peripherals through connectors or headers. Embest has also designed various function modules to further enhance the performance of SBC8600B board including VGA, Camera, WiFi and 3G (with CDMA2000 or WCDMA standard) modules, which are flexible for user selections to meet their own needs. More other modules are under development and will be released continuously.



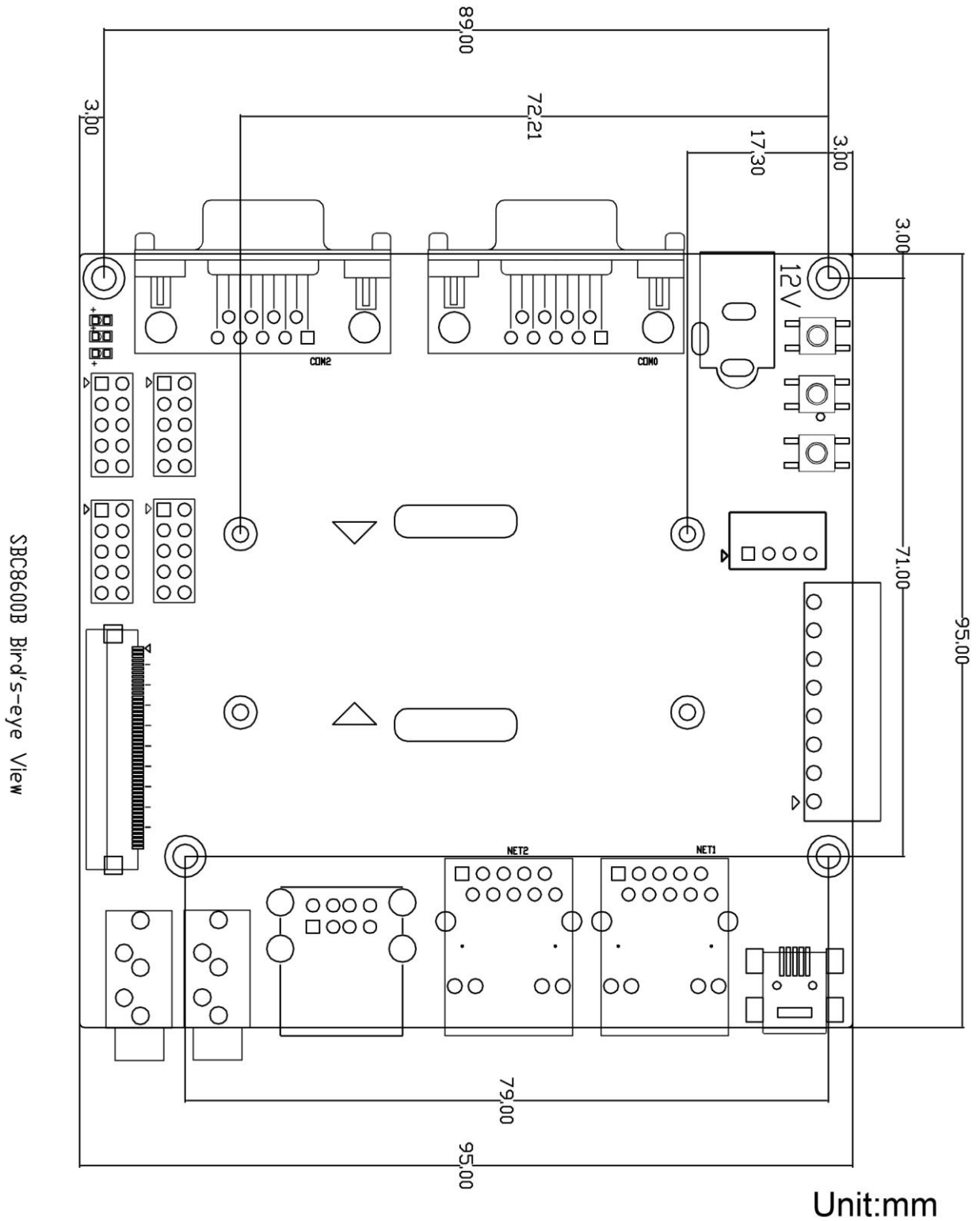
Note: The TF card slot is on the rear of the board.

Function Block Diagram



SBC8600B Function Block Diagram

Dimensions



Dimension Chart of SBC8600B Single Board Computer

Software

The SBC8600B Single Board Computer is provided with Linux 3.2.0, Android2.3 and WinCE7 BSP, with steady-going drivers, many of which are all in source code. Please refer to below table.

| OS | Item | | Remark |
|----------------------|---|--|--|
| Linux | BIOS | SPL (First boot loader) | NAND |
| | | | MMC/SD |
| | | | FAT |
| | | U-boot (Second boot loader) | NAND |
| | | | MMC/SD |
| | | | FAT |
| | Kernel | Linux-3.2.0 | Supports ROM/CRAM/EXT2/EXT3/FAT/NFS/JFFS2/UBIFS file systems |
| Driver | NAND Flash, SDRAM, Serial port, RTC, Ethernet, TFT LCD, Touch screen, TF card, USB OTG, Audio input/output, LED, Key, CAN, RS485, Power Management (backlight, PWM, ADC) (provided with source code) | | |
| | 2D/3D (not provided with source code) | | |
| Android | Kernel | Linux-3.1.0 | Gingerbread |
| | Driver | NAND Flash, SDRAM, Serial port, RTC, Ethernet, TFT LCD, Touch screen, TF card, USB OTG, Audio input/output, LED, Key, Power Management (backlight, PWM) (provided with source code) | |
| | | 2D/3D (not provided with source code) | |
| WinCE7 | BIOS | X-loader (First boot loader) | NAND |
| | | | MMC/SD |
| | | | FAT |
| | | EBOOT (Second boot loader) | NAND |
| | | | MMC/SD |
| | | | FAT |
| | OAL | OAL module | NET |
| | | | Boot parameter |
| | | | KILT(EMAC) |
| | | | Serial debug |
| | | | REBOOT |
| | | | Watchdog |
| | | | RTC |
| | | | Kernel profiler |
| | | | System timer |
| Interrupt controller | | | |
| Driver | MMU | | |
| | NAND Flash, SDRAM, Serial port, RTC, Ethernet, TFT LCD, Touch screen, TF card, USB OTG, Audio input/output, LED, Key, RS485, Power Management (backlight) (provided with source code) | | |
| | | CAN, 2D/3D (not provided with source code) | |

Order Information

| | |
|------------|--|
| Order No. | T6010237 |
| Item | SBC8600B Single Board Computer |
| Deliveries | <ul style="list-style-type: none">• One SBC8600B Board (including CPU board and expansion board)• One 12V power adapter• One cross serial cable• One net cable• One Product DVD (including user manual, schematic in PDF format, datasheet, Linux 3.2.0, Android 2.3 and WinCE 7 BSP) |
| Options | <ul style="list-style-type: none">• VGA8000 VGA Module• CAM8100-U USB Camera Module• WF8000-U WiFi Module• CDMA8000-U USB 3G Module (CDMA2000 Standard)• WCDMA8000-U USB 3G Module (WCDMA Standard)• LVDS8000 RGB-to-LVDS Module• 4.3" or 7" TFT LCD (including touch screen)• Mini8600B processor card |
| Price | Please contact us. |

**Embest Technology Co., LTD.**

Room 509, Luohu Science&Technology Building,
#85 Taining Rd., Shenzhen, Guangdong, China 518020

Tel: +86-755-25635656/25635626

Fax: +86-755-25616057

Email: market@embedinfo.com

<http://www.embedinfo.com/english> <http://www.armkits.com>

X-ON Electronics

Largest Supplier of Electrical and Electronic Components

Click to view similar products for [embest](#) manufacturer:

Other Similar products are found below :

[CAM8000-D MODULE](#) [SBC8118 WITH 4.3"LCD](#) [DEVKIT8500D WITHOUT LCD](#) [MARS BOARD WITH 9.7"LCD](#) [CAM8200-U MODULE](#) [COLINKEX](#) [MINI6245 PROCESSOR CARD](#) [EMBEDDED PI](#) [EVK-PH8800](#) [AMG8832EK](#) [SBC-EC8800](#) [1401148](#)