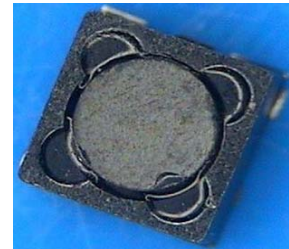


PIS2D15L(P) Series

Low Profile SMD Inductors for Power Line (Low Resistance)

FEATURES

- The PIS2D15L(P) series emphasizes lower resistance for customers' choice
- Magnetically shielded structure that ensures the high-density mounting configurations.
- Flat bottom surface ensures secure, reliable mounting.
- Provided in embossed carrier tape packaging for use with automatic mounting machines.



APPLICATIONS

Low profile/ low resistance specifically suitable for Portable telephones, hard disk drives, PDA, DSC and other electronic equipments.

PRODUCT IDENTIFICATION

PIS 2D15L(P) - 3R3 M - T

(1) (2) (3) (4) (5)

(1) Product name

(5) Packaging style

(2) Shapes and Dimensions(LxWxT)

T : taping ; None : Bulk

(3) Inductance

3R3 : 3.3uH ; 100 : 10uH

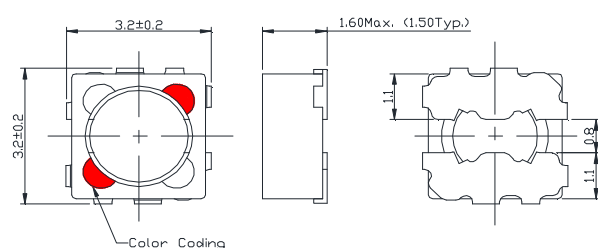
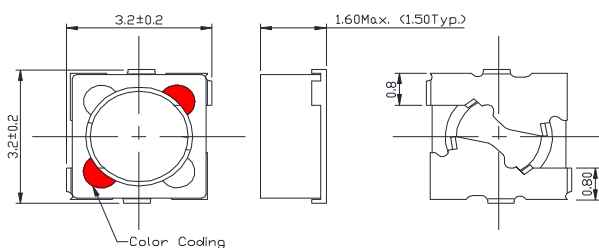
(4) Tolerance

M : ± 20%, N: ± 30%

SHAPES AND DIMENSIONS(mm)

(1)PIS2D15L

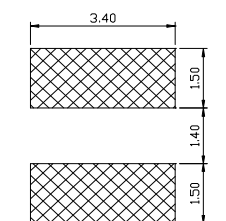
(2)PIS2D15LP



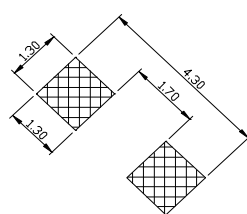
RECOMMENDED FOOTPRINT(mm)

(1)PIS2D15L

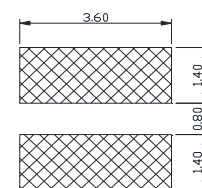
(2)PIS2D15LP



Recommand Pad Layout 1



Recommand Pad Layout 2



Recommand Pad Layout

PIS2D15L(P) Series

Low Profile SMD Inductors for Power Line (Low Resistance)

ELECTRICAL CHARACTERISTICS

Part Number	Inductance (μ H)	Tolerance (\pm %)	Rdc Typ. (Ω)	Idc Typ.(mA)		Irms Typ. (mA) T \uparrow 25°C	Color Coding
				L \downarrow 10%	L \downarrow 35%		
PIS2D15L(P)-1R0□-T	1 / 1KHz	20,30	0.038	1040	1400	1800	Green
PIS2D15L(P)-1R2□-T	1.2 / 1KHz	20,30	0.041	1000	1300	1740	Blue
PIS2D15L(P)-1R5□-T	1.5 / 1KHz	20,30	0.046	940	1220	1700	Violet
PIS2D15L(P)-1R8□-T	1.8 / 1KHz	20,30	0.058	920	1160	1640	Gray
PIS2D15L(P)-2R2□-T	2.2 / 1KHz	20,30	0.066	880	1100	1600	White
PIS2D15L(P)-2R7□-T	2.7 / 1KHz	20,30	0.070	740	930	1450	Green
PIS2D15L(P)-3R3□-T	3.3 / 1KHz	20,30	0.091	680	900	1240	Blue
PIS2D15L(P)-3R9□-T	3.9 / 1KHz	20,30	0.115	620	820	1120	Violet
PIS2D15L(P)-4R7□-T	4.7 / 1KHz	20,30	0.132	600	740	1100	Gray
PIS2D15L(P)-5R6□-T	5.6 / 1KHz	20,30	0.156	580	700	1060	White
PIS2D15L(P)-6R8□-T	6.8 / 1KHz	20,30	0.166	420	620	1000	Green
PIS2D15L(P)-8R2□-T	8.2 / 1KHz	20,30	0.230	400	580	900	Blue
PIS2D15L(P)-100□-T	10 / 1KHz	20	0.244	380	500	800	Violet
PIS2D15L(P)-120□-T	12 / 1KHz	20	0.324	360	440	700	Gray
PIS2D15L(P)-150□-T	15 / 1KHz	20	0.370	360	420	700	White
PIS2D15L(P)-180□-T	18 / 1KHz	20	0.489	300	380	620	Green

1. When ordering, please specify tolerance and packaging codes. Ex: PIS2D15L-3R3M-T

Tolerance : M = \pm 20% , N = \pm 30%

Packaging : Clear tape and reel { standard }.

2. L , Idc : Agilent/HP 4284A, 1KHz with 1V

3. Rdc : DIGITAL MILLIOHM METER Chroma 16502, or equivalent.

4. Idc for Inductance drop 10% or 35% from its value without current.

5. Irms for a 25°C rise above 25°C ambient.

6. Operating temperature range from -25°C to 105°C.

7. Packaging quantity: 1000 pcs/reel

X-ON Electronics

Largest Supplier of Electrical and Electronic Components

Click to view similar products for [Fixed Inductors](#) category:

Click to view products by [EMTEK](#) manufacturer:

Other Similar products are found below :

[CR32NP-100KC](#) [CR32NP-151KC](#) [CR32NP-180KC](#) [CR32NP-181KC](#) [CR32NP-1R5MC](#) [CR32NP-390KC](#) [CR32NP-3R9MC](#) [CR32NP-680KC](#) [CR32NP-820KC](#) [CR32NP-8R2MC](#) [CR43NP-390KC](#) [CR43NP-560KC](#) [CR43NP-680KC](#) [CR54NP-181KC](#) [CR54NP-470LC](#) [CR54NP-820KC](#) [CR54NP-8R5MC](#) [70F224AI](#) [MGDQ4-00004-P](#) [MHL1ECTTP18NJ](#) [MHQ1005P10NJ](#) [MHQ1005P1N0S](#) [MHQ1005P2N4S](#) [MHQ1005P3N6S](#) [MHQ1005P5N1S](#) [MHQ1005P8N2J](#) [PE-51506NL](#) [PE-53601NL](#) [PE-53602NL](#) [PE-53630NL](#) [PE-53824SNLT](#) [PE-92100NL](#) [PG0434.801NLT](#) [PG0936.113NLT](#) [9220-20](#) [9310-16](#) [PM06-2N7](#) [PM06-39NJ](#) [A01TK](#) [1206CS-471XJ](#) [HC2LP-R47-R](#) [HC2-R47-R](#) [HC3-2R2-R](#) [HCF1305-3R3-R](#) [1206CS-151XG](#) [RCH664NP-140L](#) [RCH664NP-4R7M](#) [RCH8011NP-221L](#) [RCP1317NP-332L](#) [RCP1317NP-391L](#)