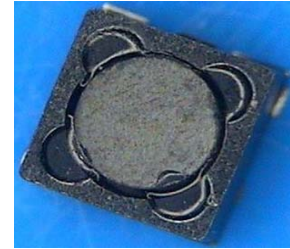


# PIS2D18H(P) Series

## Low Profile SMD Inductors for Power Line (High current)

### FEATURES

- The PIS2D18H(P) series emphasizes higher current for customers' choice
- Magnetically shielded structure that ensures the high-density mounting configurations.
- Flat bottom surface ensures secure, reliable mounting.
- Provided in embossed carrier tape packaging for use with automatic mounting machines.



### APPLICATIONS

Low profile/ large current specifically suitable for Portable telephones, hard disk drives, PDA, DSC and other electronic equipments.

### PRODUCT IDENTIFICATION

PIS 2D18H(P) - 3R3 M - T

(1) (2) (3) (4) (5)

(1) Product name

(5) Packaging style

(2) Shapes and Dimensions(LxWxT)

T : taping ; None : Bulk

(3) Inductance

3R3 : 3.3uH ; 100 : 10uH

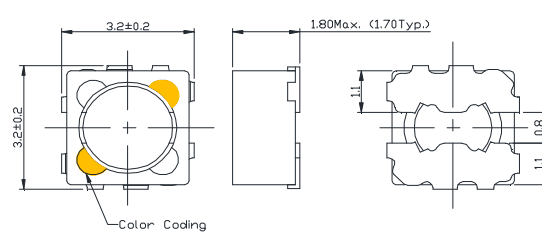
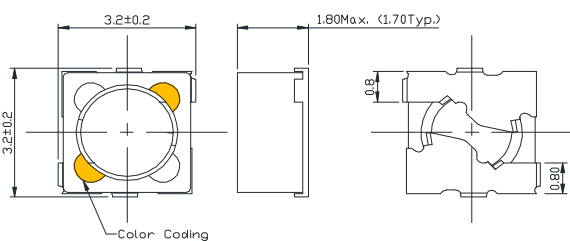
(4) Tolerance

M : ± 20%, N : ± 30%

### SHAPES AND DIMENSIONS(mm)

(1)PIS2D18H

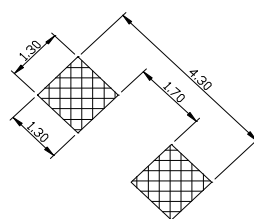
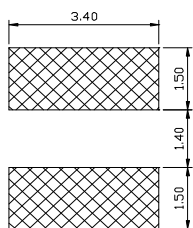
(2)PIS2D18HP



### RECOMMENDED FOOTPRINT(mm)

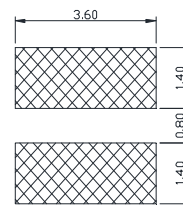
(1)PIS2D18H

(2)PIS2D18HP



Recommant Pad Layout 1

Recommant Pad Layout 2



Recommant Pad Layout

## PIS2D18H(P) Series

### Low Profile SMD Inductors for Power Line (High current)

#### ELECTRICAL CHARACTERISTICS

Part Number	Inductance (uH)	Tolerance (±%)	Rdc Typ. (Ω)	Idc Typ.(mA)		Irms Typ. (mA) T ↑ 25°C	Color Coding
				L ↓ 10%	L ↓ 35%		
PIS2D18H(P)-1R0□-T	1 / 1KHz	20,30	0.045	2600	3000	2000	Black
PIS2D18H(P)-1R8□-T	1.8 / 1KHz	20,30	0.078	2000	2300	1760	Brown
PIS2D18H(P)-2R2□-T	2.2 / 1KHz	20,30	0.090	1800	2140	1440	Red
PIS2D18H(P)-3R3□-T	3.3 / 1KHz	20,30	0.103	1500	1800	1100	Orange
PIS2D18H(P)-3R9□-T	3.9 / 1KHz	20,30	0.115	1500	1780	1050	Yellow
PIS2D18H(P)-4R7□-T	4.7 / 1KHz	20,30	0.152	1400	1600	1000	Black
PIS2D18H(P)-6R8□-T	6.8 / 1KHz	20,30	0.223	1200	1400	950	Brown
PIS2D18H(P)-100□-T	10 / 1KHz	20,30	0.360	920	1020	780	Red
PIS2D18H(P)-120□-T	12 / 1KHz	20,30	0.410	840	980	680	Orange
PIS2D18H(P)-150□-T	15 / 1KHz	20,30	0.622	800	900	620	Yellow
PIS2D18H(P)-220□-T	22 / 1KHz	20,30	0.750	640	740	450	Black
PIS2D18H(P)-330□-T	33 / 1KHz	20,30	1.125	470	520	420	Brown

1. When ordering, please specify tolerance and packaging codes. Ex: PIS2D18H-3R3M-T  
Tolerance : M = ± 20% , N = ± 30%  
Packaging : Clear tape and reel { standard }.
2. L , Idc : Agilent/HP 4284A, 1KHz with 1V
3. Rdc : DIGITAL MILLIOHM METER Chroma 16502, or equivalent.
4. Idc for Inductance drop 10% or 35% from its value without current.
5. Irms for a 25°C rise above 25°C ambient.
6. Operating temperature range from -25°C to 105°C.
7. Packaging quantity: 1000 pcs/reel

## X-ON Electronics

Largest Supplier of Electrical and Electronic Components

*Click to view similar products for [Fixed Inductors](#) category:*

*Click to view products by [EMTEK](#) manufacturer:*

Other Similar products are found below :

[CR32NP-100KC](#) [CR32NP-151KC](#) [CR32NP-180KC](#) [CR32NP-181KC](#) [CR32NP-1R5MC](#) [CR32NP-390KC](#) [CR32NP-3R9MC](#) [CR32NP-680KC](#) [CR32NP-820KC](#) [CR32NP-8R2MC](#) [CR43NP-390KC](#) [CR43NP-560KC](#) [CR43NP-680KC](#) [CR54NP-181KC](#) [CR54NP-470LC](#) [CR54NP-820KC](#) [CR54NP-8R5MC](#) [70F224AI](#) [MGDQ4-00004-P](#) [MHL1ECTTP18NJ](#) [MHQ1005P10NJ](#) [MHQ1005P1N0S](#) [MHQ1005P2N4S](#) [MHQ1005P3N6S](#) [MHQ1005P5N1S](#) [MHQ1005P8N2J](#) [PE-51506NL](#) [PE-53601NL](#) [PE-53602NL](#) [PE-53630NL](#) [PE-53824SNLT](#) [PE-92100NL](#) [PG0434.801NLT](#) [PG0936.113NLT](#) [9220-20](#) [9310-16](#) [PM06-2N7](#) [PM06-39NJ](#) [A01TK](#) [1206CS-471XJ](#) [HC2LP-R47-R](#) [HC2-R47-R](#) [HC3-2R2-R](#) [HCF1305-3R3-R](#) [1206CS-151XG](#) [RCH664NP-140L](#) [RCH664NP-4R7M](#) [RCH8011NP-221L](#) [RCP1317NP-332L](#) [RCP1317NP-391L](#)