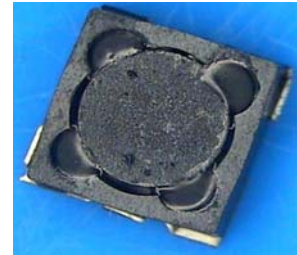


PIS3D12(P) Series

Low Profile SMD Inductors for Power Line

FEATURES

- The PIS3D12(P) series are characterized by low profile, low RDC, and high current handling capacities.
- Magnetically shielded structure that ensures the high-density mounting configurations.
- Flat bottom surface ensures secure, reliable mounting.
- Provided in embossed carrier tape packaging for use with automatic mounting machines.



APPLICATIONS

Low profile/ large current specifically suitable for Portable telephones, hard disk drives, PDA, DSC and other electronic equipments.

PRODUCT IDENTIFICATION

PIS 3D12 (P) - 3R3 M - T

(1) (2) (3) (4) (5) (6)

(1) Product name

(2) Shapes and Dimensions(LxWxT)

(3) Alternative Layout type

(4) Inductance

3R3 : 3.3uH ; 100 : 10uH

(5) Tolerance

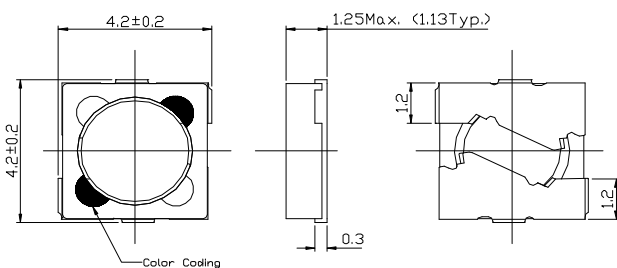
M : ± 20%, N: ± 30%

(6) Packaging style

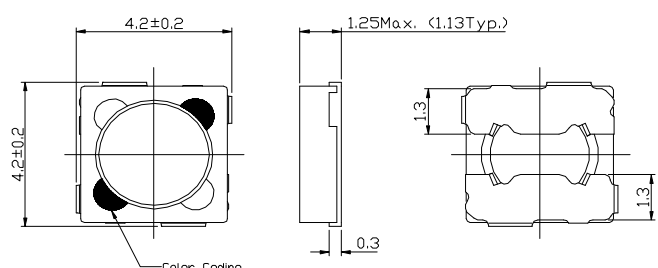
T : taping ; None : Bulk

SHAPES AND DIMENSIONS(mm)

(1) PIS3D12

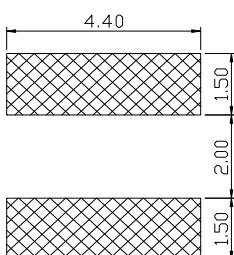


(2) PIS3D12P

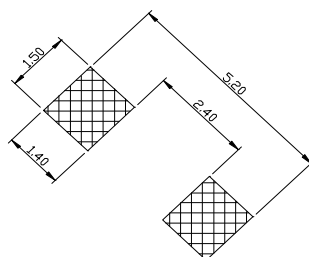


RECOMMENDED FOOTPRINT(mm)

(1) PIS3D12

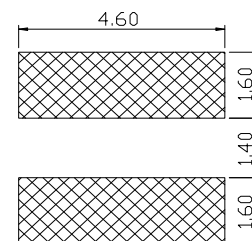


Recommand Pad Layout 1



Recommand Pad Layout 2

(2) PIS3D12P



Recommand Pad Layout

PIS3D12(P) Series

Low Profile SMD Inductors for Power Line

ELECTRICAL CHARACTERISTICS

Part Number	Inductance (uH)	Tolerance (±%)	Rdc Typ. (Ω)	Idc Typ.(mA)		Irms Typ. (mA)	Color Coding
				L ↓ 10%	L ↓ 35%	T ↑ 25°C	
PIS3D12(P)-1R0□-T	1 / 1KHz	20,30	0.045	2300	3000	2000	Black
PIS3D12(P)-1R2□-T	1.2 / 1KHz	20,30	0.048	2200	2800	1900	Brown
PIS3D12(P)-1R5□-T	1.5 / 1KHz	20,30	0.055	1900	2400	1800	Red
PIS3D12(P)-1R8□-T	1.8 / 1KHz	20,30	0.073	1800	2300	1750	Orange
PIS3D12(P)-2R2□-T	2.2 / 1KHz	20,30	0.083	1700	2100	1750	Yellow
PIS3D12(P)-2R7□-T	2.7 / 1KHz	20,30	0.109	1400	1700	1440	Green
PIS3D12(P)-3R3□-T	3.3 / 1KHz	20,30	0.118	1300	1700	1400	Blue
PIS3D12(P)-3R9□-T	3.9 / 1KHz	20,30	0.143	1260	1600	1300	Violet
PIS3D12(P)-4R7□-T	4.7 / 1KHz	20,30	0.159	1240	1580	1200	Gray
PIS3D12(P)-5R6□-T	5.6 / 1KHz	20,30	0.213	1000	1300	1000	White
PIS3D12(P)-6R8□-T	6.8 / 1KHz	20,30	0.224	1000	1300	960	Black
PIS3D12(P)-8R2□-T	8.2 / 1KHz	20,30	0.252	920	1140	940	Brown
PIS3D12(P)-100□-T	10 / 1KHz	20	0.327	860	1060	900	Red
PIS3D12(P)-120□-T	12 / 1KHz	20	0.363	800	980	820	Orange
PIS3D12(P)-150□-T	15 / 1KHz	20	0.516	600	800	640	Yellow
PIS3D12(P)-180□-T	18 / 1KHz	20	0.625	560	760	600	Green
PIS3D12(P)-220□-T	22 / 1KHz	20	0.732	460	640	520	Blue
PIS3D12(P)-330□-T	33 / 1KHz	20	1.165	420	500	420	Violet

1. When ordering, please specify tolerance and packaging codes. Ex: PIS3D12-3R3M-T

Tolerance : M = ± 20% , N = ± 30%

Packaging : Clear tape and reel { standard }.

2. L , Idc : Agilent/HP 4284A, 1KHz with 1V

3. Rdc : DIGITAL MILLIOHM METER Chroma 16502, or equivalent.

4. Idc for Inductance drop 10% or 35% from its value without current.

5. Irms for a 25°C rise above 25°C ambient.

6. Operating temperature range from -25°C to 105°C.

7. Packaging quantity: 1000 pcs/reel

X-ON Electronics

Largest Supplier of Electrical and Electronic Components

Click to view similar products for [Fixed Inductors](#) category:

Click to view products by [EMTEK](#) manufacturer:

Other Similar products are found below :

[CR32NP-100KC](#) [CR32NP-151KC](#) [CR32NP-180KC](#) [CR32NP-181KC](#) [CR32NP-1R5MC](#) [CR32NP-390KC](#) [CR32NP-3R9MC](#) [CR32NP-680KC](#) [CR32NP-820KC](#) [CR32NP-8R2MC](#) [CR43NP-390KC](#) [CR43NP-560KC](#) [CR43NP-680KC](#) [CR54NP-181KC](#) [CR54NP-470LC](#) [CR54NP-820KC](#) [CR54NP-8R5MC](#) [70F224AI](#) [MGDQ4-00004-P](#) [MHL1ECTTP18NJ](#) [MHQ1005P10NJ](#) [MHQ1005P1N0S](#) [MHQ1005P2N4S](#) [MHQ1005P3N6S](#) [MHQ1005P5N1S](#) [MHQ1005P8N2J](#) [PE-51506NL](#) [PE-53601NL](#) [PE-53602NL](#) [PE-53630NL](#) [PE-53824SNLT](#) [PE-92100NL](#) [PG0434.801NLT](#) [PG0936.113NLT](#) [9220-20](#) [9310-16](#) [PM06-2N7](#) [PM06-39NJ](#) [A01TK](#) [1206CS-471XJ](#) [HC2LP-R47-R](#) [HC2-R47-R](#) [HC3-2R2-R](#) [HCF1305-3R3-R](#) [1206CS-151XG](#) [RCH664NP-140L](#) [RCH664NP-4R7M](#) [RCH8011NP-221L](#) [RCP1317NP-332L](#) [RCP1317NP-391L](#)