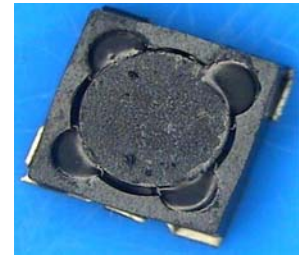


# PIS3D15(P) Series

## Low Profile SMD Inductors for Power Line

### FEATURES

- The PIS3D15(P) series are characterized by low profile, low RDC, and high current handling capacities.
- Magnetically shielded structure that ensures the high-density mounting configurations.
- Flat bottom surface ensures secure, reliable mounting.
- Provided in embossed carrier tape packaging for use with automatic mounting machines.



### APPLICATIONS

Low profile/ large current specifically suitable for Portable telephones, hard disk drives, PDA, DSC and other electronic equipments.

### PRODUCT IDENTIFICATION

PIS 3D15 (P) - 3R3 M - T

(1) (2) (3) (4) (5) (6)

(1) Product name

(2) Shapes and Dimensions(LxWxT)

(3) Alternative Layout type

(4) Inductance

3R3 : 3.3uH ; 100 : 10uH

(5) Tolerance

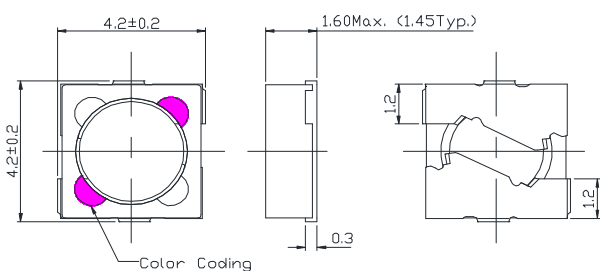
M :  $\pm 20\%$ , N :  $\pm 30\%$

(6) Packaging style

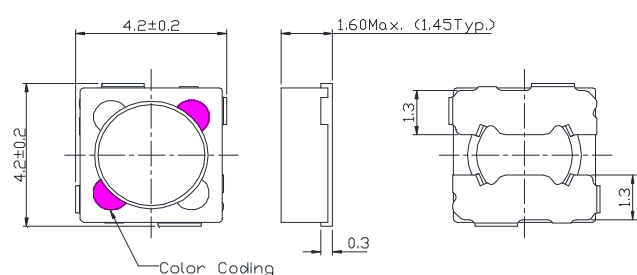
T : taping ; None : Bulk

### SHAPES AND DIMENSIONS(mm)

(1) PIS3D15

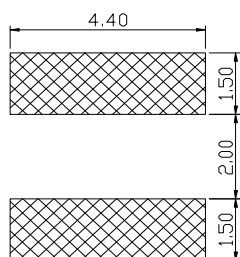


(2) PIS3D15P

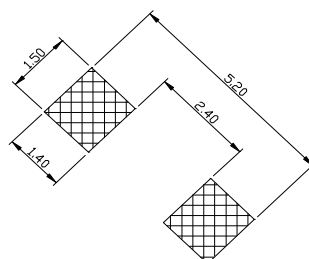


### RECOMMENDED FOOTPRINT(mm)

(1) PIS3D15

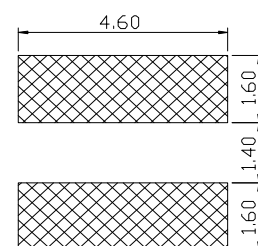


Recommand Pad Layout 1



Recommand Pad Layout 2

(2) PIS3D15P



Recommand Pad Layout

## PIS3D15(P) Series

### Low Profile SMD Inductors for Power Line

#### ELECTRICAL CHARACTERISTICS

Part Number	Inductance (uH)	Tolerance (±%)	Rdc Typ. (Ω)	Idc Typ.(mA)		Irms Typ. (mA) T ↑ 25°C	Color Coding
				L ↓ 10%	L ↓ 35%		
PIS3D15(P)-R50□-T	0.5 / 1KHz	30	0.035	3100	3900	2500	Black
PIS3D15(P)-1R0□-T	1 / 1KHz	20,30	0.040	2300	3000	2400	Black
PIS3D15(P)-1R2□-T	1.2 / 1KHz	20,30	0.043	2200	2800	2340	Brown
PIS3D15(P)-1R5□-T	1.5 / 1KHz	20,30	0.050	2000	2600	2300	Red
PIS3D15(P)-1R8□-T	1.8 / 1KHz	20,30	0.055	1660	2300	2100	Orange
PIS3D15(P)-2R2□-T	2.2 / 1KHz	20,30	0.071	1600	2200	2000	Yellow
PIS3D15(P)-2R7□-T	2.7 / 1KHz	20,30	0.078	1400	2000	1600	Green
PIS3D15(P)-3R3□-T	3.3 / 1KHz	20,30	0.087	1340	2000	1600	Blue
PIS3D15(P)-3R9□-T	3.9 / 1KHz	20,30	0.100	1200	1800	1500	Violet
PIS3D15(P)-4R7□-T	4.7 / 1KHz	20,30	0.137	1140	1600	1400	Gray
PIS3D15(P)-5R6□-T	5.6 / 1KHz	20,30	0.147	1060	1460	1200	White
PIS3D15(P)-6R8□-T	6.8 / 1KHz	20,30	0.170	1000	1400	1150	Black
PIS3D15(P)-8R2□-T	8.2 / 1KHz	20,30	0.195	940	1280	1100	Brown
PIS3D15(P)-100□-T	10 / 1KHz	20	0.228	900	1160	1020	Red
PIS3D15(P)-120□-T	12 / 1KHz	20	0.275	880	1080	900	Orange
PIS3D15(P)-150□-T	15 / 1KHz	20	0.340	640	860	720	Yellow
PIS3D15(P)-180□-T	18 / 1KHz	20	0.380	600	820	680	Green
PIS3D15(P)-220□-T	22 / 1KHz	20	0.495	540	740	650	Blue
PIS3D15(P)-270□-T	27 / 1KHz	20	0.735	500	700	550	Violet
PIS3D15(P)-330□-T	33 / 1KHz	20	0.890	460	580	480	Gray
PIS3D15(P)-390□-T	39 / 1KHz	20	1.000	400	560	420	White
PIS3D15(P)-470□-T	47 / 1KHz	20	1.150	340	520	350	Black

1. When ordering, please specify tolerance and packaging codes. Ex: PIS3D15-3R3M-T  
Tolerance : M = ± 20% , N = ± 30%  
Packaging : Clear tape and reel { standard }.
2. L , Idc : Agilent/HP 4284A, 1KHz with 1V
3. Rdc : DIGITAL MILLIOHM METER Chroma 16502, or equivalent.
4. Idc for Inductance drop 10% or 35% from its value without current.
5. Irms for a 25°C rise above 25°C ambient.
6. Operating temperature range from -25°C to 105°C.
7. Packaging quantity: 1000 pcs/reel

## X-ON Electronics

Largest Supplier of Electrical and Electronic Components

*Click to view similar products for [Fixed Inductors](#) category:*

*Click to view products by [EMTEK](#) manufacturer:*

Other Similar products are found below :

[CR54NP-470LC](#) [CR54NP-820KC](#) [CR54NP-8R5MC](#) [70F224AI](#) [MGDQ4-00004-P](#) [MHL1ECTTP18NJ](#) [MHQ1005P10NJ](#) [MHQ1005P1N0S](#)  
[MHQ1005P2N4S](#) [MHQ1005P3N6S](#) [MHQ1005P5N1S](#) [MHQ1005P8N2J](#) [PE-53601NL](#) [PE-53602NL](#) [PE-53630NL](#) [PE-53824SNLT](#)  
[PG0936.113NLT](#) [9220-20](#) [9310-16](#) [PM06-2N7](#) [PM06-39NJ](#) [A01TK](#) [1206CS-471XJ](#) [HC2-R47-R](#) [HC3-R50-R](#) [HC8-1R2-R](#) [HCF1305-3R3-](#)  
[R](#) [1206CS-151XG](#) [RCH664NP-140L](#) [RCH664NP-4R7M](#) [RCH8011NP-221L](#) [RCP1317NP-332L](#) [RCP1317NP-391L](#) [RCR1010NP-470M](#)  
[RCR110DNP-331L](#) [DH2280-4R7M](#) [DS1608C-106](#) [ASPI-4020HI-R10M-T](#) [B10TJ](#) [B82498B3101J000](#) [ELJ-RE27NJF2](#) [1812CS-153XJ](#)  
[1812CS-183XJ](#) [1812CS-223XJ](#) [1812LS-104XJ](#) [1812LS-105XJ](#) [1812LS-124XJ](#) [1812LS-154XJ](#) [1812LS-223XJ](#) [1812LS-224XJ](#)