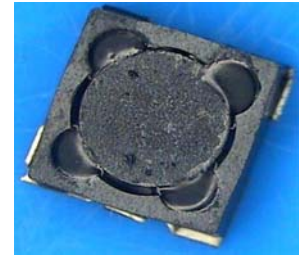


PIS3D18(P) Series

Low Profile SMD Inductors for Power Line

FEATURES

- The PIS3D18(P) series are characterized by low profile, low RDC, and high current handling capacities.
- Magnetically shielded structure that ensures the high-density mounting configurations.
- Flat bottom surface ensures secure, reliable mounting.
- Provided in embossed carrier tape packaging for use with automatic mounting machines.



APPLICATIONS

Low profile/ large current specifically suitable for Portable telephones, hard disk drives, PDA, DSC and other electronic equipments.

PRODUCT IDENTIFICATION

PIS 3D18 (P) - 3R3 M - T

(1) (2) (3) (4) (5) (6)

(1) Product name

(2) Shapes and Dimensions(LxWxT)

(3) Alternative Layout type

(4) Inductance

3R3 : 3.3uH ; 100 : 10uH

(5) Tolerance

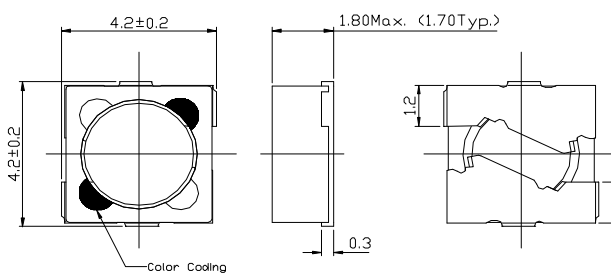
M : ± 20%, N: ± 30%

(6) Packaging style

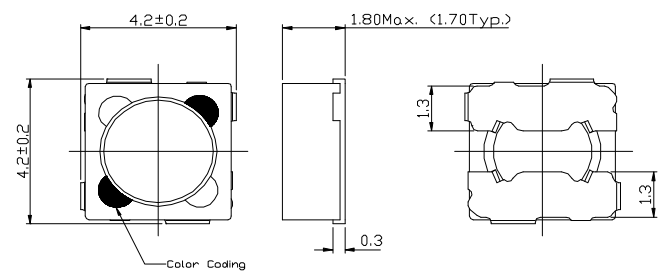
T : taping ; None : Bulk

SHAPES AND DIMENSIONS(mm)

(1) PIS3D18

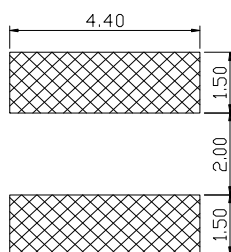


(2) PIS3D18P

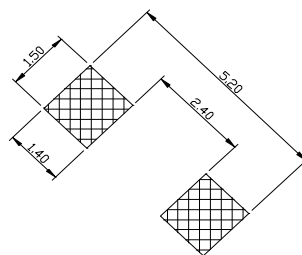


RECOMMENDED FOOTPRINT(mm)

(1) PIS3D18

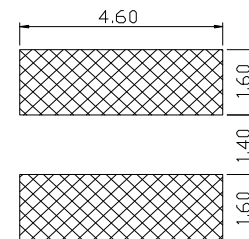


Recommand Pad Layout 1



Recommand Pad Layout 2

(2) PIS3D18P



Recommand Pad Layout

PIS3D18(P) Series

Low Profile SMD Inductors for Power Line

ELECTRICAL CHARACTERISTICS

| Part Number | Inductance (μ H) | Tolerance ($\pm\%$) | Rdc Typ. (Ω) | Idc Typ.(mA) | | Irms Typ. (mA) T \uparrow 25 $^{\circ}$ C | Color Coding |
|-------------------|--------------------------|--------------------------|--------------------------|--------------------|--------------------|--|--------------|
| | | | | L \downarrow 10% | L \downarrow 35% | | |
| PIS3D18(P)-1R0□-T | 1 / 1KHz | 20,30 | 0.038 | 2600 | 3200 | 2400 | Black |
| PIS3D18(P)-1R2□-T | 1.2 / 1KHz | 20,30 | 0.044 | 2400 | 3000 | 2200 | Brown |
| PIS3D18(P)-1R5□-T | 1.5 / 1KHz | 20,30 | 0.050 | 2200 | 2700 | 2200 | Red |
| PIS3D18(P)-1R8□-T | 1.8 / 1KHz | 20,30 | 0.045 | 1900 | 2400 | 2000 | Orange |
| PIS3D18(P)-2R2□-T | 2.2 / 1KHz | 20,30 | 0.062 | 1800 | 2200 | 1900 | Yellow |
| PIS3D18(P)-2R7□-T | 2.7 / 1KHz | 20,30 | 0.068 | 1700 | 2100 | 1800 | Green |
| PIS3D18(P)-3R3□-T | 3.3 / 1KHz | 20,30 | 0.080 | 1500 | 1880 | 1650 | Blue |
| PIS3D18(P)-3R9□-T | 3.9 / 1KHz | 20,30 | 0.084 | 1400 | 1800 | 1560 | Violet |
| PIS3D18(P)-4R7□-T | 4.7 / 1KHz | 20,30 | 0.099 | 1220 | 1460 | 1400 | Gray |
| PIS3D18(P)-5R6□-T | 5.6 / 1KHz | 20,30 | 0.110 | 1160 | 1480 | 1300 | White |
| PIS3D18(P)-6R8□-T | 6.8 / 1KHz | 20,30 | 0.128 | 1020 | 1260 | 1200 | Black |
| PIS3D18(P)-8R2□-T | 8.2 / 1KHz | 20,30 | 0.146 | 1000 | 1240 | 1150 | Brown |
| PIS3D18(P)-100□-T | 10 / 1KHz | 20 | 0.165 | 900 | 1100 | 1050 | Red |
| PIS3D18(P)-120□-T | 12 / 1KHz | 20 | 0.254 | 840 | 1000 | 800 | Orange |
| PIS3D18(P)-150□-T | 15 / 1KHz | 20 | 0.320 | 740 | 880 | 720 | Yellow |
| PIS3D18(P)-180□-T | 18 / 1KHz | 20 | 0.360 | 700 | 840 | 680 | Green |
| PIS3D18(P)-220□-T | 22 / 1KHz | 20 | 0.418 | 600 | 740 | 650 | Blue |
| PIS3D18(P)-270□-T | 27 / 1KHz | 20 | 0.450 | 560 | 700 | 600 | Violet |
| PIS3D18(P)-330□-T | 33 / 1KHz | 20 | 0.620 | 460 | 580 | 580 | Gray |
| PIS3D18(P)-390□-T | 39 / 1KHz | 20 | 0.650 | 450 | 560 | 480 | White |
| PIS3D18(P)-470□-T | 47 / 1KHz | 20 | 0.790 | 430 | 520 | 450 | Black |
| PIS3D18(P)-560□-T | 56 / 1KHz | 20 | 0.862 | 380 | 480 | 400 | Brown |
| PIS3D18(P)-680□-T | 68 / 1KHz | 20 | 1.000 | 300 | 400 | 360 | Red |
| PIS3D18(P)-101□-T | 100 / 1KHz | 20 | 1.380 | 260 | 320 | 360 | Yellow |

1. When ordering, please specify tolerance and packaging codes. Ex: PIS3D18-3R3M-T

Tolerance : M = $\pm 20\%$, N = $\pm 30\%$

Packaging : Clear tape and reel { standard }.

2. L , Idc : Agilent/HP 4284A, 1KHz with 1V

3. Rdc : DIGITAL MILLIOHM METER Chroma 16502, or equivalent.

4. Idc for Inductance drop 10% or 35% from its value without current.

5. Irms for a 25 $^{\circ}$ C rise above 25 $^{\circ}$ C ambient.

6. Operating temperature range from -25 $^{\circ}$ C to 105 $^{\circ}$ C.

7. Packaging quantity: 1000 pcs/reel

X-ON Electronics

Largest Supplier of Electrical and Electronic Components

Click to view similar products for [Fixed Inductors](#) category:

Click to view products by [EMTEK](#) manufacturer:

Other Similar products are found below :

[CR32NP-100KC](#) [CR32NP-151KC](#) [CR32NP-180KC](#) [CR32NP-181KC](#) [CR32NP-1R5MC](#) [CR32NP-390KC](#) [CR32NP-3R9MC](#) [CR32NP-680KC](#) [CR32NP-820KC](#) [CR32NP-8R2MC](#) [CR43NP-390KC](#) [CR43NP-560KC](#) [CR43NP-680KC](#) [CR54NP-181KC](#) [CR54NP-470LC](#) [CR54NP-820KC](#) [CR54NP-8R5MC](#) [70F224AI](#) [MGDQ4-00004-P](#) [MHL1ECTTP18NJ](#) [MHQ1005P10NJ](#) [MHQ1005P1N0S](#) [MHQ1005P2N4S](#) [MHQ1005P3N6S](#) [MHQ1005P5N1S](#) [MHQ1005P8N2J](#) [PE-51506NL](#) [PE-53601NL](#) [PE-53602NL](#) [PE-53630NL](#) [PE-53824SNLT](#) [PE-92100NL](#) [PG0434.801NLT](#) [PG0936.113NLT](#) [9220-20](#) [9310-16](#) [PM06-2N7](#) [PM06-39NJ](#) [A01TK](#) [1206CS-471XJ](#) [HC2LP-R47-R](#) [HC2-R47-R](#) [HC3-2R2-R](#) [HCF1305-3R3-R](#) [1206CS-151XG](#) [RCH664NP-140L](#) [RCH664NP-4R7M](#) [RCH8011NP-221L](#) [RCP1317NP-332L](#) [RCP1317NP-391L](#)