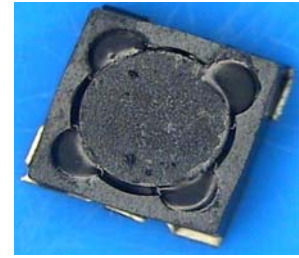


PIS3D18(P) Series

Low Profile SMD Inductors for Power Line

FEATURES

- The PIS3D18(P) series are characterized by low profile, low RDC, and high current handling capacities.
- Magnetically shielded structure that ensures the high-density mounting configurations.
- Flat bottom surface ensures secure, reliable mounting.
- Provided in embossed carrier tape packaging for use with automatic mounting machines.



APPLICATIONS

Low profile/ large current specifically suitable for Portable telephones, hard disk drives, PDA, DSC and other electronic equipments.

PRODUCT IDENTIFICATION

PIS 3D18 (P) - 3R3 M - T

(1) (2) (3) (4) (5) (6)

(1) Product name

(2) Shapes and Dimensions(LxWxT)

(3) Alternative Layout type

(4) Inductance

3R3 : 3.3uH ; 100 : 10uH

(5) Tolerance

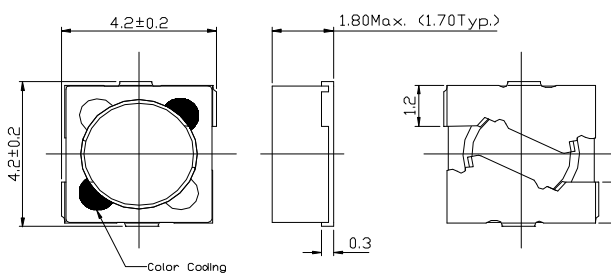
M : $\pm 20\%$, N: $\pm 30\%$

(6) Packaging style

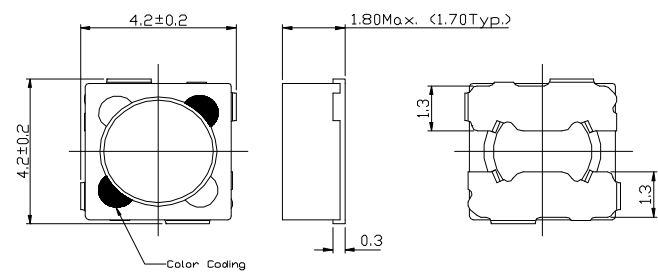
T : taping ; None : Bulk

SHAPES AND DIMENSIONS(mm)

(1) PIS3D18

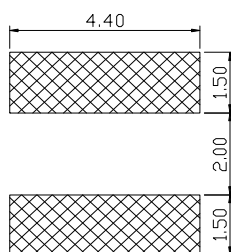


(2) PIS3D18P

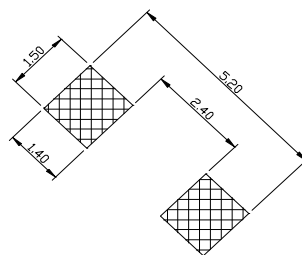


RECOMMENDED FOOTPRINT(mm)

(1) PIS3D18

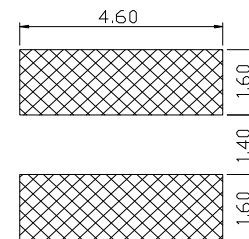


Recommand Pad Layout 1



Recommand Pad Layout 2

(2) PIS3D18P



Recommand Pad Layout

PIS3D18(P) Series

Low Profile SMD Inductors for Power Line

ELECTRICAL CHARACTERISTICS

Part Number	Inductance (μ H)	Tolerance (\pm %)	Rdc Typ. (Ω)	Idc Typ.(mA)		Irms Typ. (mA) T \uparrow 25°C	Color Coding
				L \downarrow 10%	L \downarrow 35%		
PIS3D18(P)-1R0□-T	1 / 1KHz	20,30	0.038	2600	3200	2400	Black
PIS3D18(P)-1R2□-T	1.2 / 1KHz	20,30	0.044	2400	3000	2200	Brown
PIS3D18(P)-1R5□-T	1.5 / 1KHz	20,30	0.050	2200	2700	2200	Red
PIS3D18(P)-1R8□-T	1.8 / 1KHz	20,30	0.045	1900	2400	2000	Orange
PIS3D18(P)-2R2□-T	2.2 / 1KHz	20,30	0.062	1800	2200	1900	Yellow
PIS3D18(P)-2R7□-T	2.7 / 1KHz	20,30	0.068	1700	2100	1800	Green
PIS3D18(P)-3R3□-T	3.3 / 1KHz	20,30	0.080	1500	1880	1650	Blue
PIS3D18(P)-3R9□-T	3.9 / 1KHz	20,30	0.084	1400	1800	1560	Violet
PIS3D18(P)-4R7□-T	4.7 / 1KHz	20,30	0.099	1220	1460	1400	Gray
PIS3D18(P)-5R6□-T	5.6 / 1KHz	20,30	0.110	1160	1480	1300	White
PIS3D18(P)-6R8□-T	6.8 / 1KHz	20,30	0.128	1020	1260	1200	Black
PIS3D18(P)-8R2□-T	8.2 / 1KHz	20,30	0.146	1000	1240	1150	Brown
PIS3D18(P)-100□-T	10 / 1KHz	20	0.165	900	1100	1050	Red
PIS3D18(P)-120□-T	12 / 1KHz	20	0.254	840	1000	800	Orange
PIS3D18(P)-150□-T	15 / 1KHz	20	0.320	740	880	720	Yellow
PIS3D18(P)-180□-T	18 / 1KHz	20	0.360	700	840	680	Green
PIS3D18(P)-220□-T	22 / 1KHz	20	0.418	600	740	650	Blue
PIS3D18(P)-270□-T	27 / 1KHz	20	0.450	560	700	600	Violet
PIS3D18(P)-330□-T	33 / 1KHz	20	0.620	460	580	580	Gray
PIS3D18(P)-390□-T	39 / 1KHz	20	0.650	450	560	480	White
PIS3D18(P)-470□-T	47 / 1KHz	20	0.790	430	520	450	Black
PIS3D18(P)-560□-T	56 / 1KHz	20	0.862	380	480	400	Brown
PIS3D18(P)-680□-T	68 / 1KHz	20	1.000	300	400	360	Red
PIS3D18(P)-101□-T	100 / 1KHz	20	1.380	260	320	360	Yellow

1. When ordering, please specify tolerance and packaging codes. Ex: PIS3D18-3R3M-T

Tolerance : M = \pm 20% , N = \pm 30%

Packaging : Clear tape and reel { standard }.

2. L , Idc : Agilent/HP 4284A, 1KHz with 1V

3. Rdc : DIGITAL MILLIOHM METER Chroma 16502, or equivalent.

4. Idc for Inductance drop 10% or 35% from its value without current.

5. Irms for a 25°C rise above 25°C ambient.

6. Operating temperature range from -25°C to 105°C.

7. Packaging quantity: 1000 pcs/reel

X-ON Electronics

Largest Supplier of Electrical and Electronic Components

Click to view similar products for [Fixed Inductors](#) category:

Click to view products by [EMTEK](#) manufacturer:

Other Similar products are found below :

[CR43NP-680KC](#) [CR54NP-470LC](#) [CR54NP-820KC](#) [CR54NP-8R5MC](#) [70F224AI](#) [MGDQ4-00004-P](#) [MHL1ECTTP18NJ](#) [MHQ1005P10NJ](#)
[MHQ1005P1N0S](#) [MHQ1005P2N4S](#) [MHQ1005P3N6S](#) [MHQ1005P5N1S](#) [MHQ1005P8N2J](#) [PE-51506NL](#) [PE-53601NL](#) [PE-53602NL](#) [PE-53630NL](#) [PE-53824SNLT](#) [PE-92100NL](#) [PG0434.801NLT](#) [PG0936.113NLT](#) [9220-20](#) [9310-16](#) [PM06-2N7](#) [PM06-39NJ](#) [A01TK](#) [1206CS-471XJ](#) [HC2LP-R47-R](#) [HC2-R47-R](#) [HC3-2R2-R](#) [HC3-R50-R](#) [HC8-1R2-R](#) [HCF1305-3R3-R](#) [1206CS-151XG](#) [RCH664NP-140L](#) [RCH664NP-4R7M](#) [RCH8011NP-221L](#) [RCP1317NP-332L](#) [RCP1317NP-391L](#) [RCR1010NP-470M](#) [RCR110DNP-331L](#) [DH2280-4R7M](#) [DS1608C-106](#)
[ASPI-4020HI-R10M-T](#) [B10TJ](#) [B82498B3101J000](#) [ELJ-RE27NJF2](#) [1812CS-153XJ](#) [1812CS-183XJ](#) [1812CS-223XJ](#)