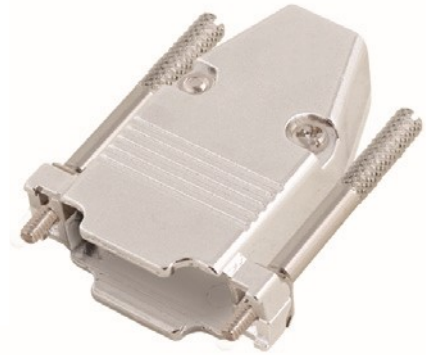


D-Sub Full Metal cover, Top entry, Long Jackscrews + Rubber inserts

TECHNICAL SPECIFICATIONS

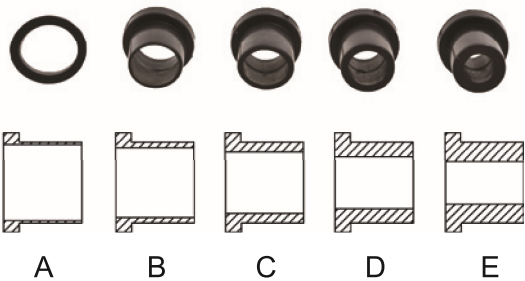
Material: Zinc, Nickel Plated  
 Operating Temperature: -25°C to +90°C  
 Cable Entry: Top Entry  
 Cable O.D.:  
 Jackscrews: UNC 4-40



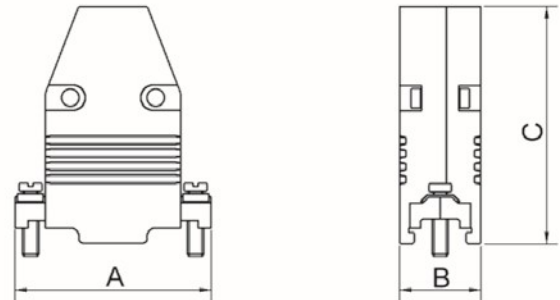
Features:

- Available in sizes 9, 15, 25, 37 and 50
- Suitable for any common Sub-D connector
- Re-Openable
- Also available with Short Jackscrews (ME-RG)

Compression inserts - Inner Diameters:



Size	A	B	C	D	E
9/15	8,00	7,50	7,00	6,00	4,50
25	9,50	8,30	7,90	6,75	5,80
37/50	13,50	13,00	11,00	9,00	8,00



Size CCOV	Dim A	Dim B	Dim C
9-way	31,4	16,2	53,0
15-way	40,2	16,2	48,3
25-way	53,0	16,2	48,3
37-way	69,2	16,2	48,3
50-way	67,0	18,4	48,3

Ordering information:

Size:	P/N - Kitted:	Product Code:
9-way	2360-0107-11	CCOV 9-MEL-RG
15-way	2360-0107-12	CCOV15-MEL-RG
25-way	2360-0107-13	CCOV25-MEL-RG
37-way	2360-0107-14	CCOV37-MEL-RG
50-way	2360-0107-15	CCOV50-MEL-RG



Encitech AB  
 Rörkullsvägen 4  
 SE-302 41 HALMSTAD, Sweden

Tel: +46-(0)35-15 13 90  
 e-mail: connectors@encitech.com

[www.encitech.com](http://www.encitech.com)

## X-ON Electronics

Largest Supplier of Electrical and Electronic Components

*Click to view similar products for [D-Sub Standard Connectors](#) category:*

*Click to view products by [Encitech](#) manufacturer:*

Other Similar products are found below :

[56F711-015](#) [LV242999-142T12](#) [015-0341-000](#) [015-0349-000](#) [015-8755-001](#) [020419-0104](#) [012-0467-000](#) [012-9507-114](#) [020745-0008](#) [609-25P](#) [CT2-14S-2PCA34](#) [CT2-18-11PCAU](#) [CT6E22-22PS](#) [M83513/01-FC](#) [M85049/48-3-2F](#) [6STD15PCT99S40X](#) [6STD15SCT99S40X](#) [7-135760-9](#) [MC11E-10-6SN](#) [747552-3](#) [MD1-21PS](#) [MDM-15SCBRM7-F222](#) [MDM96517-699](#) [MDM96521-744](#) [MDVB1-21SL1](#) [MIK0-1-7SH003](#) [MIKQ6-7SH076](#) [MIKQ7-7PH077](#) [MIKQ7-7PH11](#) [MIKQ7-7PH32](#) [MIKQ9-7PH003](#) [MKJ4A1F14-55S](#) [8-135760-3](#) [PG-KV/PV-16-GROM-SEALING](#) [GDA15P](#) [GDAY15PB](#) [980-0000-170](#) [980-0000-171](#) [980-0000-174](#) [980-0000-179](#) [980-0000-587](#) [980-0000-761](#) [980-0001-017](#) [980-2001-490](#) [980-2001-492](#) [980-8554-000](#) [980-8555-000](#) [980-8557-000](#) [980-8563-000](#) [980-8575-000](#)