

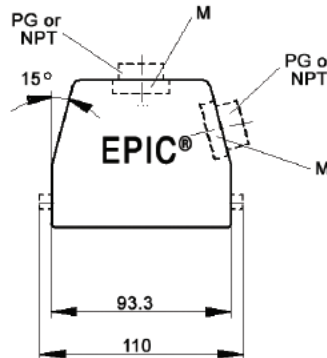
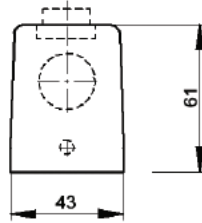
# EPIC® Rectangular Connectors



HBE 16 Housings: Single Lever on Base

## HOODS

### TOP ENTRY



### SIDE ENTRY



All dimensions are in mm.

**Specifications:** DIN 43652  
**Temperature Range:** -40°C to +125°C

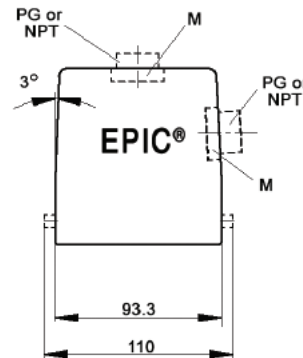
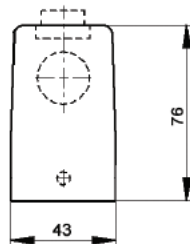
**Protection class:** NEMA 4, NEMA 12, IP65  
**Material:** Aluminum alloy, powder coated

Position of Cable Entry	Size of Entry			Part Numbers			Complete your installation with a SKINTOP®, Pg 352			
	PG	NPT	Metric	PG	NPT	Metric	PG- Nylon	PG- Metal	Metric- Nylon	Metric- Metal
Top Entry	21	3/4"	25	10080900	100809NP	19080900	53015150	52015750	53111030	53112030
Side Entry	21	3/4"	25	10082900	100829NP	19082900	53015150	52015750	53111030	53112030
	29	1"	32	10092900	100929NP	19092900	53015160	52015760	53111040	53112040

Top Entry Metric hoods do not come with a neck.

## HIGH PROFILE HOODS

### TOP ENTRY



### SIDE ENTRY



All dimensions are in mm.

**Specifications:** DIN 43652  
**Temperature Range:** -40°C to +125°C

**Protection class:** NEMA 4, NEMA 12, IP65  
**Material:** Aluminum alloy, powder coated

Position of Cable Entry	Size of Entry			Part Numbers			Complete your installation with a SKINTOP®, Pg 352			
	PG	NPT	Metric	PG	NPT	Metric	PG- Nylon	PG- Metal	Metric- Nylon	Metric- Metric
Top Entry	21	3/4"	25	70094200	700942NP	79094200	53015150	52015750	53111030	53112030
	29	1"	32	70094400	700944NP	79099400	53015160	52015760	53111040	53112040
	-	-	40	-	-	79094600	-	-	53111050	53112050
Side Entry	21	3/4"	25	70104200	701042NP	79104200	53015150	52015750	53111030	53112030
	29	1"	32	70104400	701044NP	79104400	53015160	52015760	53111040	53112040
	-	-	40	-	-	79104800	-	-	53111050	53112050

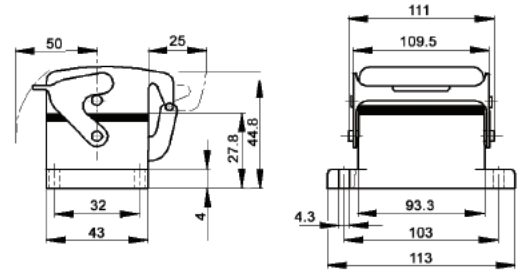
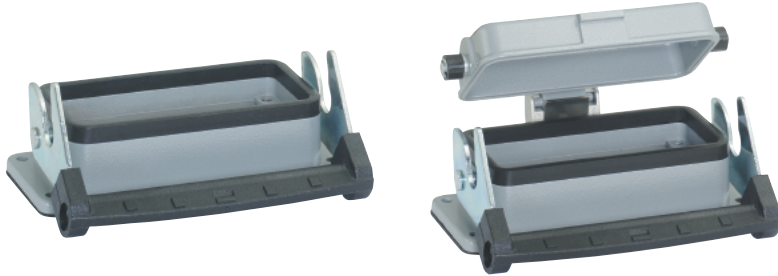
High Profile Metric hoods do not come with a neck.

# EPIC® Rectangular Connectors

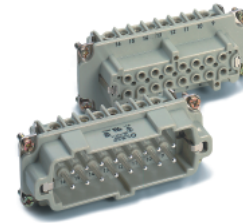


HBE 16 Housings: Single Lever on Base

## PANEL MOUNT BASES



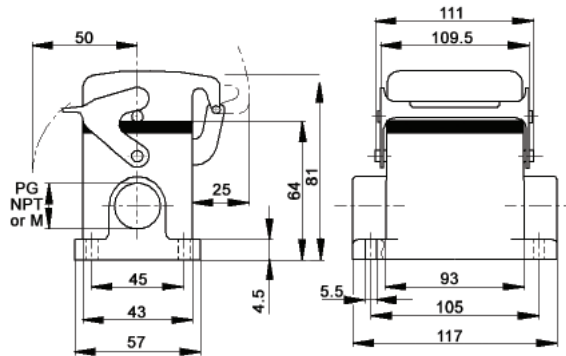
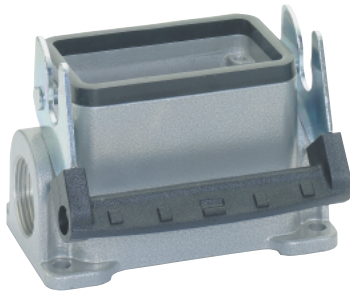
**Specifications:** DIN 43652  
**Temperature Range:** -40°C to +125°C  
**Protection class:** NEMA 4, NEMA 12, IP65  
**Material:** Aluminum alloy, powder coated



Description	Part Numbers
Panel Mount without Dust Cover	10072900
Panel Mount with Dust Cover	10073900

All dimensions are in mm.

## SURFACE MOUNT BASES



All dimensions are in mm.

**Specifications:** DIN 43652  
**Temperature Range:** -40°C to +125°C

**Protection class:** NEMA 4, NEMA 12, IP65  
**Material:** Aluminum alloy, powder coated

# of Entries	Size of Entry			Part Numbers			Complete your installation with a SKINTOP®, Pg 352			
	PG	NPT	Metric	PG	NPT	Metric	PG- Nylon	PG- Metal	Metric- Nylon	Metric- Metal
2 Entries	21	3/4"	25	10075900	100759NP	19075900	53015150	52015750	53111030	53112030
1 Entry	21	3/4"	25	10074900	100749NP	19074900	53015150	52015750	53111030	53112030
2 Entries w/ dust cover	21	3/4"	25	10078900	100789NP	19078900	53015150	52015750	53111030	53112030
1 Entry with dust cover	21	3/4"	25	10076900	100769NP	19076900	53015150	52015750	53111030	53112030

## DUST COVERS WITH ATTACHMENT STRING



**Material:** Thermoplastic Resin

**Temperature:** -40°C to 125°C

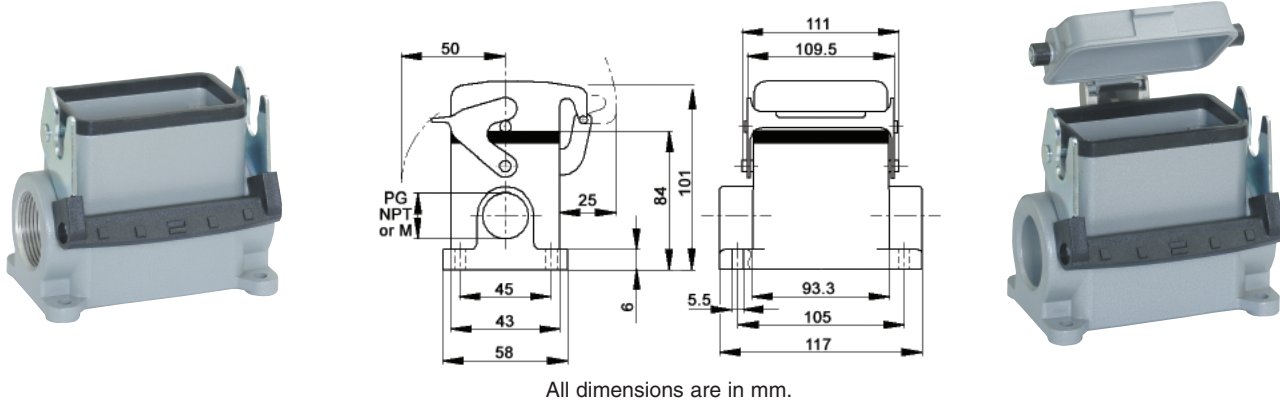
	Part #
Dust cover with single lever for HBE 16 Hoods	10088600
Dust cover with single lever bolts for HBE 16 Panel Mount or Surface Mount Base/ Cable Coupler Hood	10088700

# EPIC® Rectangular Connectors



HBE 16 Housings: Single Lever on Base

## HIGH PROFILE SURFACE MOUNT BASES



All dimensions are in mm.

**Specifications:** DIN 43652  
**Temperature Range:** -40°C to +125°C

**Protection class:** NEMA 4, NEMA 12, IP65  
**Material:** Aluminum alloy, powder coated

# of Entries	Size of Entry			Part Numbers			Complete your installation with a SKINTOP®			
	PG	NPT	Metric	PG	NPT	Metric	PG- Nylon	PG- Metal	Metric- Nylon	Metric- Metal
<b>2 Entries</b>	21	3/4"	25	70111200	701112NP	79111200	53015150	52015750	53111030	53112030
	29	1"	32	70111400	701114NP	79111400	53015160	52015760	53111040	53112040
<b>1 Entry</b>	21	3/4"	25	70110200	701102NP	79110200	53015150	52015750	53111030	53112030
	29	1"	32	70110400	701104NP	79110400	53015160	52015760	53111040	53112040
<b>2 Entries with dust cover</b>	21	3/4"	25	70115200	701152NP	79115200	53015150	52015750	53111030	53112030
	29	1"	32	70115400	701154NP	79115400	53015160	52015760	53111040	53112040
<b>1 Entry with dust cover</b>	21	3/4"	25	70114200	701142NP	79114200	53015150	52015750	53111030	53112030
	29	1"	32	70114400	701144NP	79114400	53015160	52015760	53111040	53112040

## CABLE COUPLER HOODS

### STANDARD PROFILE

### HIGH PROFILE



**Specifications:** DIN 43652  
**Temperature Range:** -40°C to +125°C

**Protection class:** NEMA 4, NEMA 12, IP65  
**Material:** Aluminum alloy, powder coated

Position of Cable Entry	Size of Entry			Part Numbers			Complete your installation with a SKINTOP®			
	PG	NPT	Metric	PG	NPT	Metric	PG- Nylon	PG- Metal	Metric- Nylon	Metric- Metal
<b>Standard Profile</b>	21	3/4"	25	10086900	100869NP	19086900	53015150	52015750	53111030	53112030
<b>High Profile</b>	21	3/4"	25	70092200	700922NP	79092200	53015150	52015750	53111030	53112030
	29	1"	32	70092400	700924NP	79092400	53015160	52015760	53111040	53112040

Cable coupler metric hoods do not come with a neck.

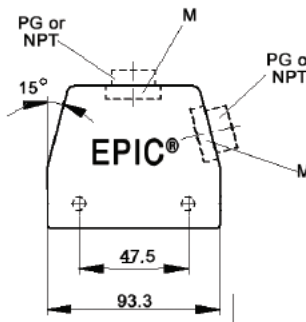
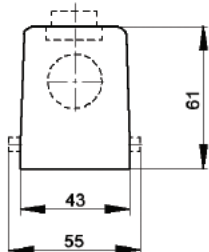
# EPIC® Rectangular Connectors



HBE 16 Housings: Double Levers on Base

## HOODS

### TOP ENTRY



### SIDE ENTRY



All dimensions are in mm.

Specifications: DIN 43652  
Temperature Range: -40°C to +125°C

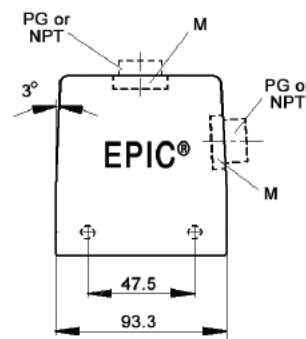
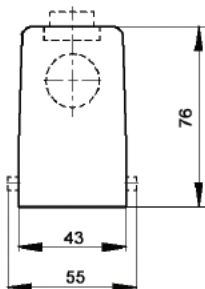
Protection class: NEMA 4, NEMA 12, IP65  
Material: Aluminum alloy, powder coated

Position of Cable Entry	Size of Entry			Part Numbers			Complete your installation with a SKINTOP®, Pg 352			
	PG	NPT	Metric	PG	NPT	Metric	PG- Nylon	PG- Metal	Metric- Nylon	Metric- Metal
Top Entry	21	3/4"	25	100800C0	100800NP	19080000	53015150	52015750	53111030	53112030
	29	1"	32	100900C0	100900NP	19090000	53015160	52015760	53111040	53112040
Side Entry	21	3/4"	25	100820C0	100820NP	19082000	53015150	52015750	53111030	53112030
	29	1"	32	100920C0	100920NP	19092000	53015160	52015760	53111040	53112040

Top Entry metric hoods do not come with a neck.

## HIGH PROFILE HOODS

### TOP ENTRY



### SIDE ENTRY



All dimensions are in mm.

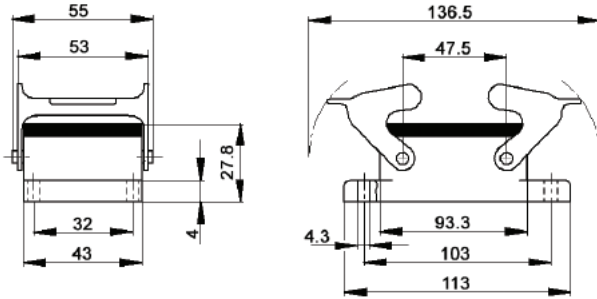
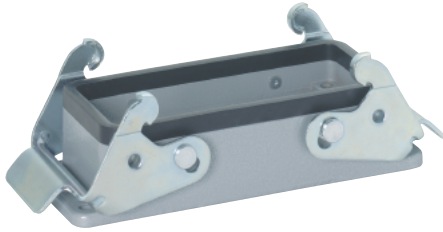
Specifications: DIN 43652  
Temperature Range: -40°C to +125°C

Protection class: NEMA 4, NEMA 12, IP65  
Material: Aluminum alloy, powder coated

Position of Cable Entry	Size of Entry			Part Numbers			Complete your installation with a SKINTOP®, Pg 352			
	PG	NPT	Metric	PG	NPT	Metric	PG- Nylon	PG- Metal	Metric- Nylon	Metric- Metal
Top Entry	21	3/4"	25	701002C0	701002NP	79100200	53015150	52015750	53111030	53112030
	29	1"	32	701004C0	701004NP	79100400	53015160	52015760	53111040	53111040
	-	-	40	-	-	79100800	-	-	53111050	53112050
Side Entry	21	3/4"	25	701022C0	701022NP	79102200	53015150	52015750	53111030	53112030
	29	1"	32	701024C0	701024NP	79102400	53015160	52015760	53111040	53111040
	-	-	40	-	-	79102800	-	-	53111050	53112050

High Profile Metric hoods do not come with a neck.

### PANEL MOUNT BASES

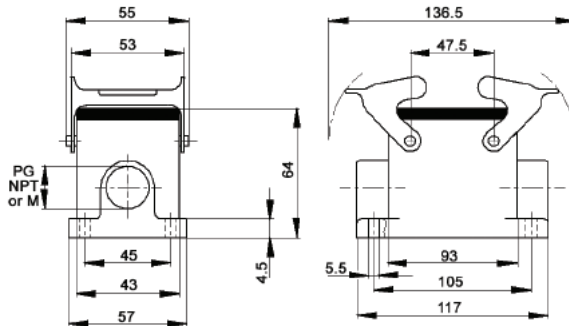
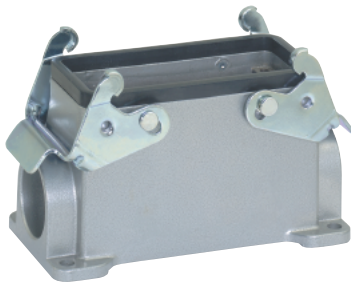


All dimensions are in mm.

**Specifications:** DIN 43652  
**Temperature Range:** -40°C to +125°C  
**Protection class:** NEMA 4, NEMA 12, IP65  
**Material:** Aluminum alloy, powder coated

Description	Part Numbers
Panel Mount without Dust Cover	100720C0

### SURFACE MOUNT BASES



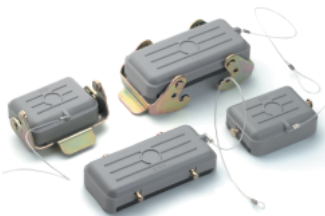
All dimensions are in mm.

**Specifications:** DIN 43652  
**Temperature Range:** -40°C to +125°C

**Protection class:** NEMA 4, NEMA 12, IP65  
**Material:** Aluminum alloy, powder coated

# of Entries	Size of Entry			Part Numbers			Complete your installation with a SKINTOP®, Pg 352			
	PG	NPT	Metric	PG	NPT	Metric	PG- Nylon	PG- Metal	Metric- Nylon	Metric- Metal
2 Entries	21	3/4"	25	100750C0	100750NP	19075000	53015150	52015750	53111030	53112030
1 Entry	21	3/4"	25	100740C0	100740NP	19074000	53015150	52015750	53111040	53112030

### DUST COVERS WITH ATTACHMENT STRING



**Material:** Thermoplastic Resin

**Temperature:** -40°C to +125°C

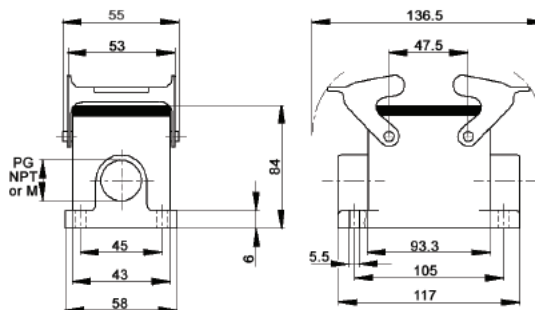
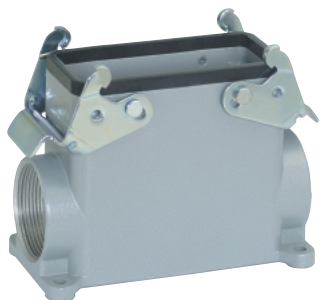
	Part #
Dust cover with double levers and gasket for HBE 16 Hoods	10088500
Dust cover with double lever bolts for HBE 16 Panel Mount or Surface Mount Base/ Cable Coupler Hood	10087000

# EPIC® Rectangular Connectors



HBE 16 Housings: Double Levers on Base

## HIGH PROFILE SURFACE MOUNT BASES



All dimensions are in mm.

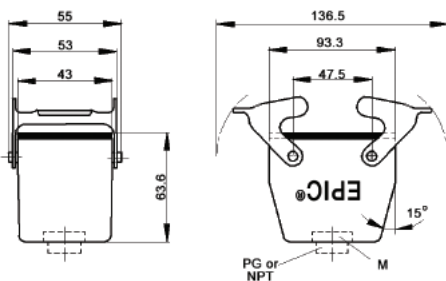
**Specifications:** DIN 43652  
**Temperature Range:** -40°C to +125°C

**Protection class:** NEMA 4, NEMA 12, IP65  
**Material:** Aluminum alloy, powder coated

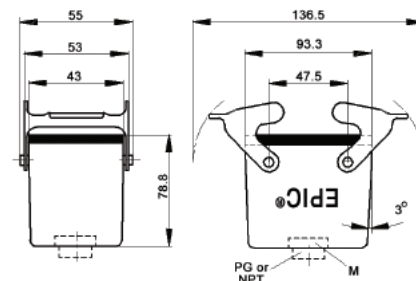
# of Entries	Size of Entry			Part Numbers			Complete your installation with a SKINTOP®, Pg 352			
	PG	NPT	Metric	PG	NPT	Metric	PG- Nylon	PG- Metal	Metric- Nylon	Metric- Metal
2 Entries without cover	21	3/4"	25	700862C0	700862NP	79086200	53015150	52015750	53111030	53112030
	29	1"	32	700864C0	700864NP	79086400	53015160	52015760	53111040	53112040
1 Entry without dust cover	21	3/4"	25	70085200	700852NP	79085200	53015150	52015750	53111030	53112030
	29	1"	32	700854C0	700854NP	79085400	53015160	52015760	53111040	53112040

## CABLE COUPLER HOODS

### STANDARD PROFILE



### HIGH PROFILE



All dimensions are in mm.

**Specifications:** DIN 43652  
**Temperature Range:** -40°C to +125°C

**Protection class:** NEMA 4, NEMA 12, IP65  
**Material:** Aluminum alloy, powder coated

Profile	Size of Entry			Part Numbers			Complete your installation with a SKINTOP®, Pg 352			
	PG	NPT	Metric	PG	NPT	Metric	PG- Nylon	PG- Metal	Metric- Nylon	Metric- Metal
Standard Profile	21	3/4"	25	100860C0	100860NP	19086000	53015150	52015750	53111030	53112030
High Profile	21	3/4"	25	700902C0	700902NP	79090200	53015150	52015750	53111030	53112030
	29	1"	32	700904C0	700904NP	79090400	53015160	52015760	53111040	53112040

Cable Coupler Metric hoods do not come with a neck.

## X-ON Electronics

Largest Supplier of Electrical and Electronic Components

*Click to view similar products for [epic manufacturer](#):*

Other Similar products are found below :

[44420040 + 73002716](#) [19426500](#) [72004000 + 73018000](#) [13.1623](#) [11161000](#) [11.1610](#) [9198+00022030](#) [72004000 + 73002756](#) [72000010](#)  
[10.5310](#) [10.4264+10.4310](#) [72040010](#) [HA4-FK-TE-SM-M-M20](#) [10.4310](#) [10.1270+10.1970+12.9545](#) [10.4220+10.4320](#)  
[10.4265+10.4235+10.4200+10.4210](#) [10121000+10196000+12954500](#) [10.0720](#) [44420037 + 73002752](#) [10102000](#) [10.4264](#) [8990+00022030](#)  
[72004000 + 73002716](#) [10.4861](#) [44420037 + 73018000](#) [10.1210+10.1960+12.9545](#) [10.4881](#) [10.0220+10.0030+10.1900+10.1910+12.9544](#)  
[10431000](#) [10.1920](#) [44420037 + 73028500](#) [13.1622](#) [44420037 + 73002716](#) [10.1900](#)