

RECIPIENT

## **SPECIFICATIONS**

**PRODUCT**

**No.:** Q13MC1461000400

**MODEL :** MC-146

**SPEC. No. :** Q15-031-22A

**DATE:** Apr. 29. 2015

**SEIKO EPSON CORPORATION**

8548 Naka-minowa  
Minowa-machi Kamiina-gun  
Nagano-ken  
399-4696 Japan

# SPECIFICATIONS

## 1. Application

- 1) This document is applicable to the crystal unit that are delivered  
t
- 2) RoHS compliant  
MC-146 contains lead in high melting type solder which is exempted in RoHS directive.
- 3) This Product supplied (and any technical information furnished, if any) by Seiko Epson Corporation shall not be used for the development and manufacture of weapon of mass destruction or for other military purposes.  
Making available such products and technology to any third party who may use such products or technologies for the said purposes are also prohibited.
- 4) This product listed here is designed as components or parts for electronics equipment in general consumer use.  
We do not expect that any of these products would be incorporated or otherwise used as a component or part for the equipment, which requires an systems, and medical equipment, the functional purpose of which is to keep extra high reliability, such as satellite, rocket and other space life.

## 2. Product No. / Model

The product No. of this crystal unit is Q13MC1461000400.  
The model is MC-146.

## 3. Packing

It is subject to the packing standard of Seiko Epson Corp.

## 4. Warranty

Defective parts which originate with us are replaced free of charge in the case of defects being found with 12 months after delivery.

## 5. Amendment and/or termination

Amendment and/or termination of this specification is subject to the agreement between the two parties.

## 6. Contents

Item No.	Item	Page
[ 1 ]	Absolute maximum ratings	2
[ 2 ]	Operating range	2
[ 3 ]	Static characteristics	2
[ 4 ]	Environmental and Mechanical characteristics	3 to 4
[ 5 ]	Dimensions and Marking layout	5 to 6
[ 6 ]	Notes	7

[ 1 ] Absolute maximum ratings

No.	Item	Symbol	Rating value			Unit	Note
			Min.	Typ.	Max.		
1	Storage temperature range	T_stg	- 55		+ 125	°C	Suppose to be within CI STD at + 25 °C ± 3 °C.
2	Maximum level of drive	GL		1.0		μW	

[ 2 ] Operating range

No.	Item	Symbol	Rating value			Unit	Note
			Min.	Typ.	Max.		
1	Operating temperature range	T_use	- 40		+ 85	°C	
2	Level of drive	DL	0.01	0.1	0.5	μW	
3	Vibration mode		Fundamental				

[ 3 ] Static characteristics

No.	Item	Symbol	Value	Unit	Conditions	
1	Nominal Frequency	f_nom	32.768	kHz		
2	Frequency tolerance	f_tol	± 20	× 10 <sup>-6</sup>	CL = 9 pF Ta = + 25 ± 3 °C Level of drive : 0.1 μW Not include aging	
3	Motional resistance	R1	65 Max.	kΩ	CI meter : Saunders 140B Level of drive : 0.5 μW	
4	Motional capacitance	C1	1.9 Typ.	fF		
5	Shunt capacitance	C0	0.8 Typ.	pF		
6	Frequency temperature characteristics	Turnover temperature	Ti	+ 25 ± 5	°C	Values are calculated by The frequencies at + 10, + 25, + 40 °C with C-MOS circuit.
		Parabolic coefficient	B	- 0.04 Max.	× 10 <sup>-6</sup> /°C <sup>2</sup>	
7	Isolation resistance	IR	500 Min.	MΩ	DC 100 V ± 15, 60 seconds Between terminal # 1 and terminal # 4	
8	Frequency Aging	f_age	± 3	× 10 <sup>-6</sup> /year	Ta = + 25 °C ± 3 °C Level of drive : 0.1 μW	

[ 4 ] Environmental and Mechanical characteristics

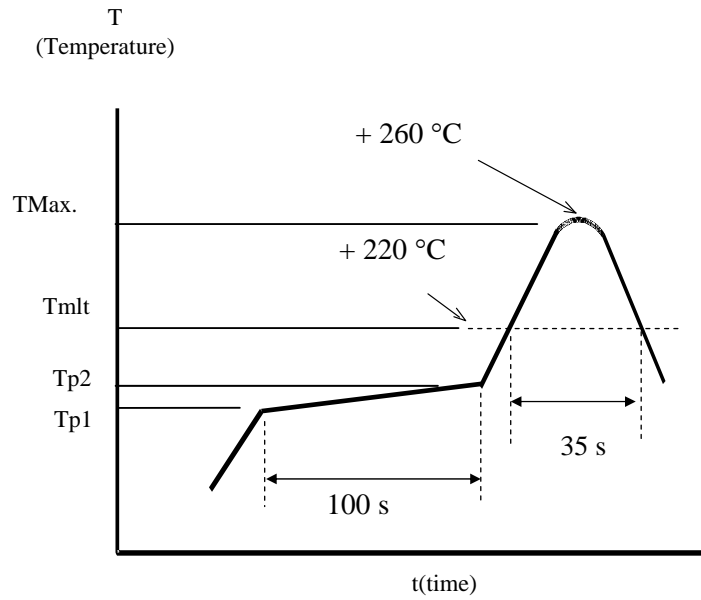
No.	Items	Value *1*2 $\Delta f/f [1 \times 10^{-6}]$	Conditions
1	Shock	*3 $\pm 5$	100 g dummy (EPSON TOYOCOM Standard) drop from 1500 mm height on to the concrete 3 directions 10 times
2	Vibration	*3 $\pm 3$	10 Hz to 55 Hz amplitude 0.75 mm 55 Hz to 500 Hz acceleration 98 m/s <sup>2</sup> 10 Hz → 500 Hz → 10 Hz 15 min./cycle 6 h (2 hours , 3 directions)
3	Resistance to soldering heat (Reflow characteristics)	*3 $\pm 5$	Treat the Reflow 2 times by the following profile in the next page
4	High temperature storage	*3 a ) $\pm 20$ b ) $\pm 10$	a ) + 125 °C × 1 000 h b ) + 85 °C × 1 000 h
5	Low temperature storage	*3 $\pm 10$	- 55 °C × 1 000 h
6	Temperature humidity storage	*3 $\pm 10$	+ 85 °C × 85 %RH × 1000 h
7	Temperature cycle	*3 $\pm 10$	- 55 °C ↔ + 125 °C 30 minutes at each temperature 100 cycles
8	Shear	No peeling-off at a soldered part	10 N press the side for 10 s $\pm 1$ s. Ref. IEC 60068-2-21
9	Pull-off	No peeling-off at a soldered part	10 N press the side for 10 s $\pm 1$ s. Ref. IEC 60068-2-21
10	Substrate bending	No peeling-off at a soldered part	Bending width reaches 3mm and hold for 5 s $\pm 1$ s × 1 time Ref. IEC 60068-2-21
11	Solderability	Termination must be 95 % covered with fresh solder	Dip termination into solder bath at + 235 $\pm 5$ °C for 3 s (Using rosin flux)
12	Solvent resistance	The marking shall be legible	Ref. JIS C 0052 or IEC 60068-2-45

- Note
1. \*1 Each test done independently.
  2. \*2 Measuring 1 h to 24 h later leaving in room temperature after each test.
  3. \*3 Pre conditionings
    1. + 125 °C × 24 h to +85 °C × 85 %RH × 48 h → reflow 2 times
    2. Initial value shall be after 24 h at room temperature.
  4. Shift series resistance at after above tests should be less than  $\pm 15$  % or less than  $\pm 5$  k $\Omega$   
In case Resistance to soldering heat, high temperature storage ( $\pm 125$  °C × 1 000 h ) shift series  
resistance at after above tests should be less than  $\pm 20$  % or  $\pm 10$  k $\Omega$

◆ Air- reflow

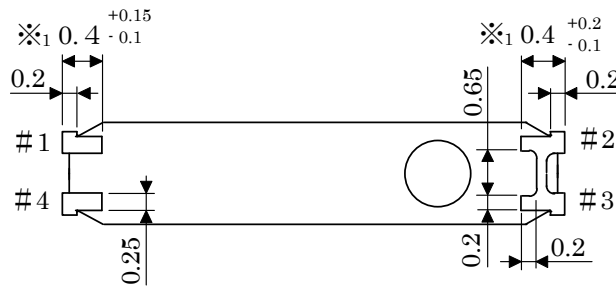
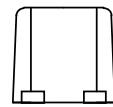
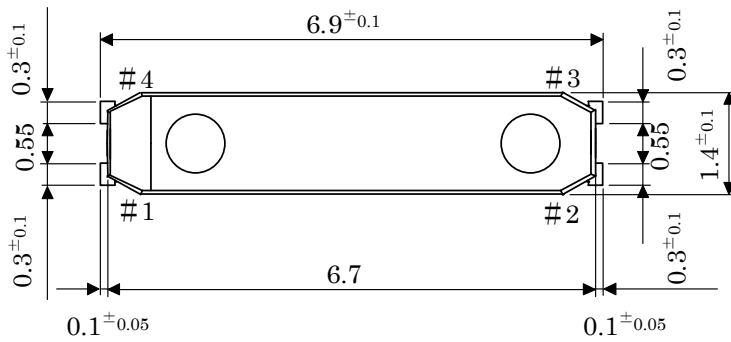
Pre heating temperature :  $T_{p1} \sim T_{p2} = + 170 \text{ }^\circ\text{C}$

Peak temperature must not exceed  $+ 260 \text{ }^\circ\text{C}$  and the duration of over  $+ 220 \text{ }^\circ\text{C}$  should be 35 s



[ 5 ] Dimensions and Marking layout

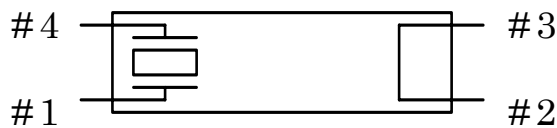
1. Dimensions



※<sub>1</sub> : Available area for soldering

※<sub>2</sub> Metal may be exposed on the top or bottom of this product.  
This will not affect any quality, reliability or electrical spec.

2. Internal Connection

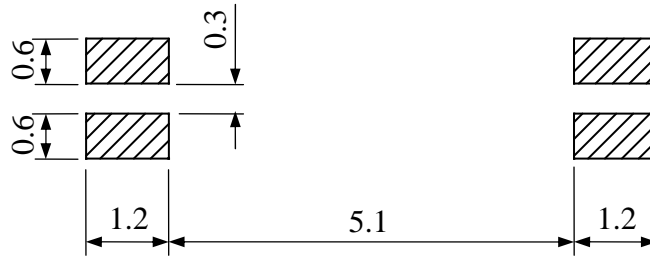


Do not connect # 2 and # 3 terminals to any external circuits (including GND).

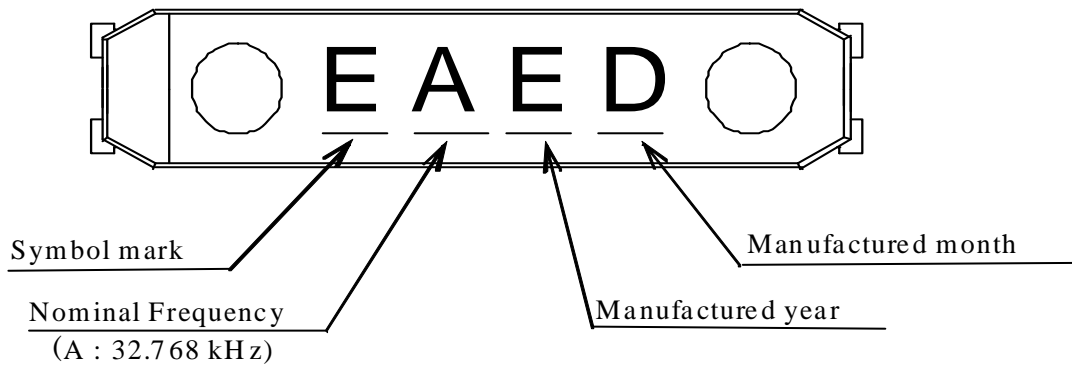
Type	MC-146	Unit	1 = 1 mm
------	--------	------	----------

3. Recommended soldering pattern

Unit : 1 = 1 mm



4. Marking layout



Symbol of Manufacturing year

Year digit	1	2	3	4	5	6	7	8	9	0
Marking	A	B	C	D	E	F	G	H	J	K

Year digit(1<sup>st</sup>) of the Production

Symbol of Manufacturing month

Month digit	1	2	3	4	5	6	7	8	9	10	11	12
Marking (Halide free)	A	B	C	D	E	F	G	H	J	K	L	M

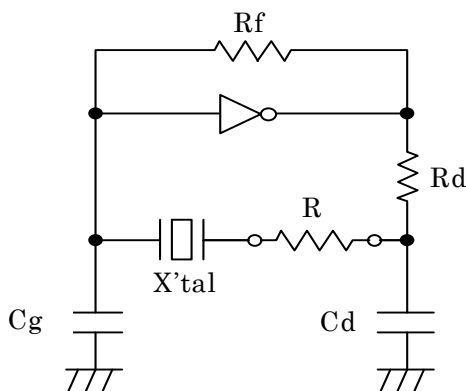
◆ The above marking layout shows only marking contents and their approximate position and it is not for font, size and exact position.

Type	MC-146	Unit	1 = 1 mm
------	--------	------	----------

## [ 6 ] Notes

1. Max two (2) times reflow is allowed. Once miss soldering is happened, hand work soldering by soldering iron is recommended. (+ 350 °C × within 5 sec.)
2. Patterning should be followed by our recommended one.
3. Applying excessive excitation force to the crystal unit may cause deterioration damage.
4. Unless adequate negative resistance is allocated in the oscillation circuit, start up time of oscillation may be increased, or no oscillation may occur.

How to check the negative resistance.



- (1) Connect the resistance (R) to the circuit in series with the crystal unit.
- (2) Adjust R so that oscillation can start (or stop).
- (3) Measure R when oscillation just start (or stop) in above (2).
- (4) Get the negative resistance  
 $-R = R + CI$  value.
- (5) Recommended  $-R$   
 $|-R| > CI \times (5 \sim 10)$

5. The shortest patterning line on board is recommendable.  
Too long line on board may cause of abnormal oscillation.
6. To avoid mull function, no pattern under or near the crystal is allowed.  
Solder paste should be more than 150  $\mu\text{m}$  thickness.
7. This device must be stored at the normal temperature and humidity conditions before mounting on a board.
8. Too much exciting shock or vibration may cause deterioration on damage.  
Depending on the condition such as a shock in assembly machinery, the products may be damaged.  
Please check your condition in advance to maintain shock level to be smallest.
9. Depending on the conditions, ultrasonic cleaning may cause resonant damage of the internal crystal unit. Since we are unable to determine the conditions (type of cleaning unit, power, time, conditions inside the bath, etc.) to be used in your company, we cannot guarantee the safety of this unit when it is cleaned in an ultrasonic cleaner.
10. Ink marking may be damaged by some kind of solvent, please take precautions when choosing solvent by your selves.
11. Please refer to packing specification regarding how to storage the products in the pack.



# TAPING SPECIFICATION

## 1. APPLICATION

This document is applicable to MC-146.

## 2. CONTENTS

Item No.	Item	Page
[ 1 ]	Taping specification	1 to 2
[ 2 ]	Shipping carton	3
[ 3 ]	Marking	
[ 4 ]	Quantity	4
[ 5 ]	Storage environment	
[ 6 ]	Handling	

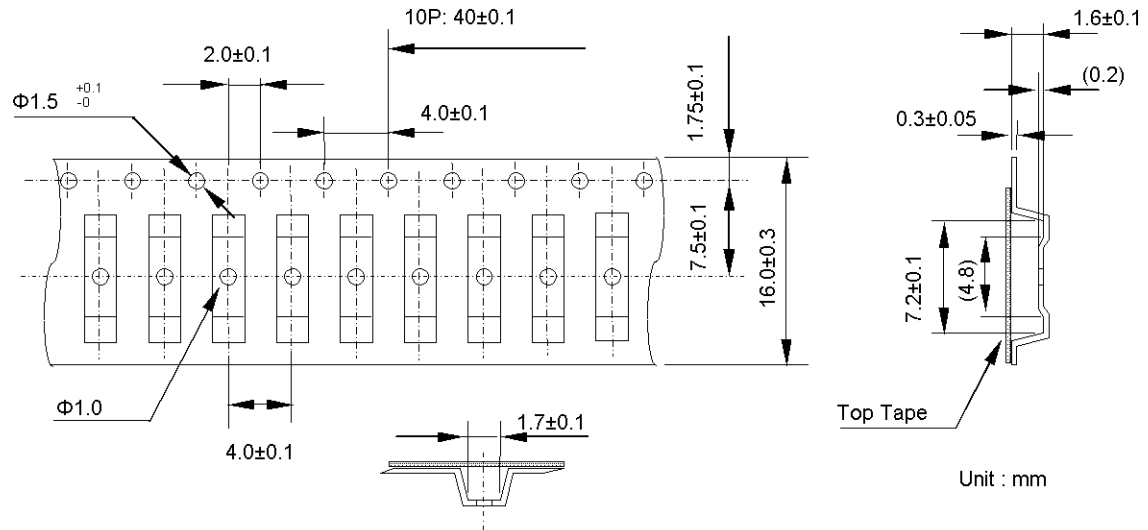
[ 1 ] Taping specification

Subject to EIA-481 and IEC 60286

(1) Tape dimensions TE1604L

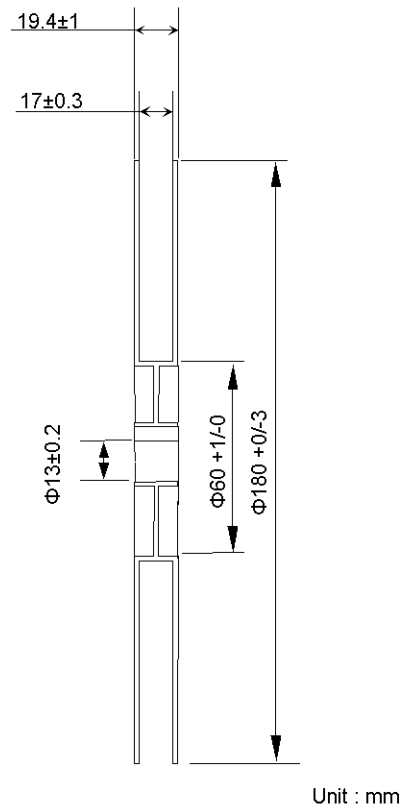
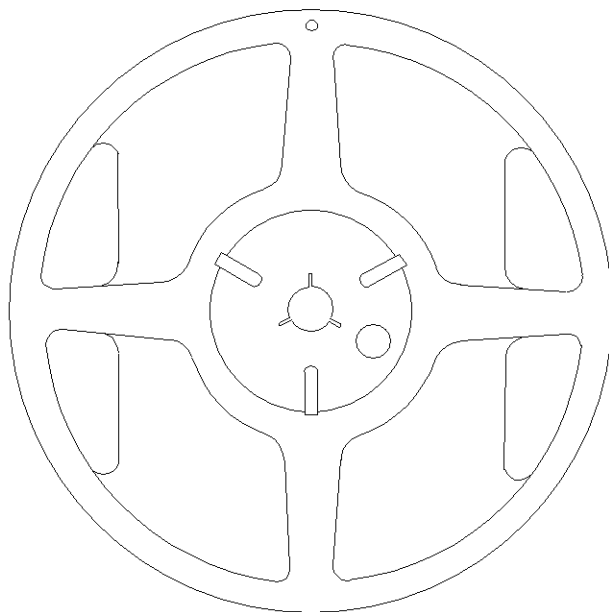
Material of the Carrier Tape : PS

Material of the Top Tape : PET+PE



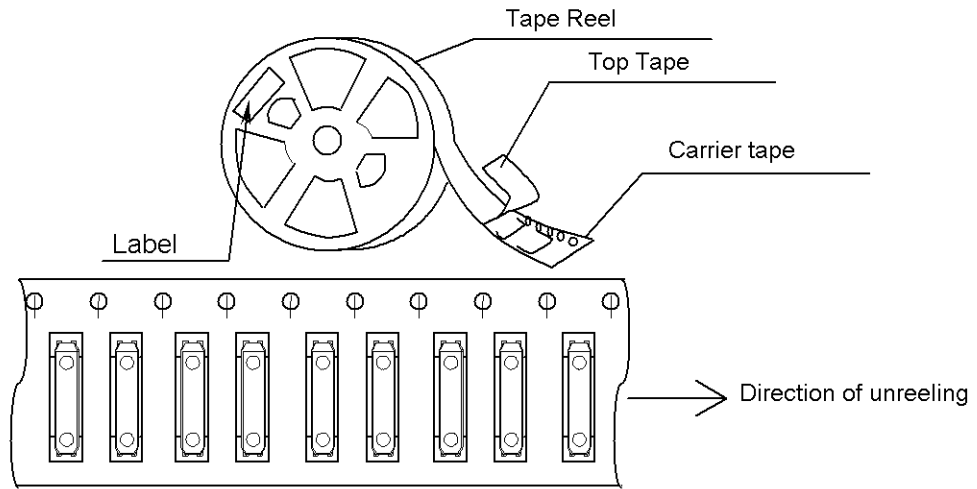
(2) Reel dimensions

Material of the Reel : PS

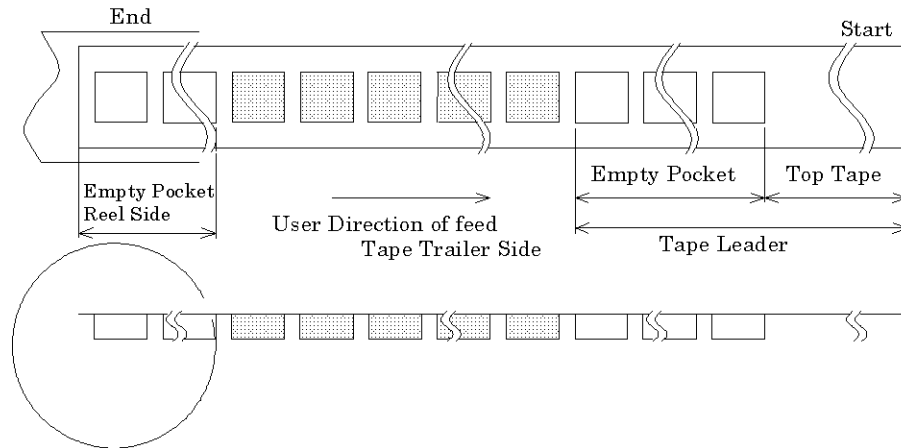


Form and Size of reel window shows are one of the example

(3) Packing  
 (a) Tape & Reel



(b) Start & End Point



Item		Empty Space
Tape Leader	Top Tape	Min. 1 000 mm
	Carrier Tape	Min. 160 mm
Tape Trailer	Top Tape	Min. 0 mm
	Carrier Tape	Min. 160 mm

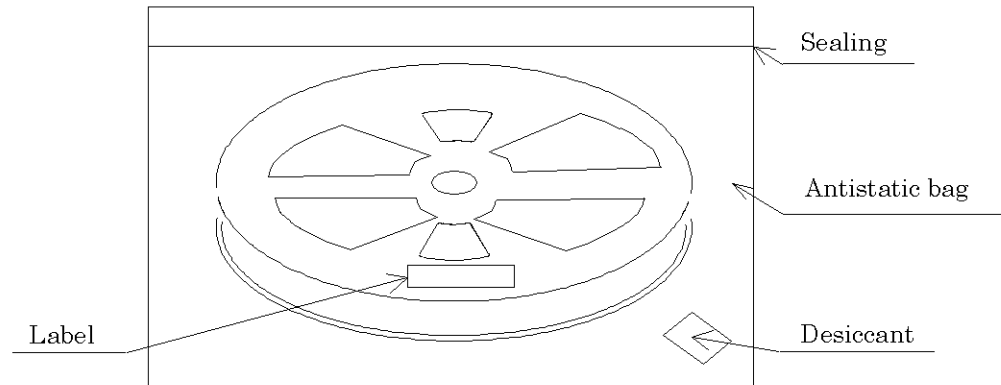
(4) Peel force of the cover tape

(a) angle : cover tape during peel off and the direction of unreeling shall be 165° to 180°.

(b) peel speed : 300 mm/min

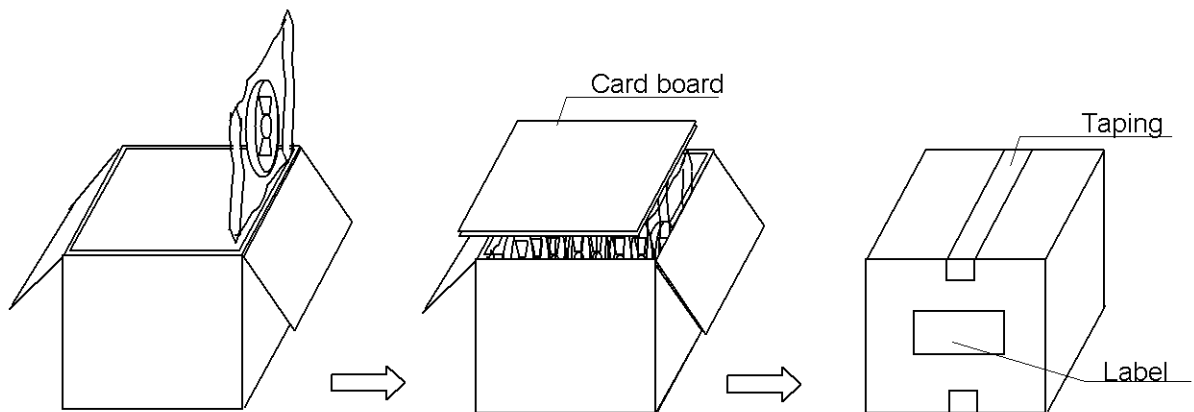
## [ 2 ] Shipping Carton

### a) Packing to antistatic bag



### b) Packing to shipping carton

If there are room in the outer box, material is put in a shock absorbing together.



## [ 3 ] Marking

### (1) Reel marking

• Reel marking shall consist of :

- 1) Parts name
- 2) Quantity
- 3) Manufacturing Date or symbol
- 4) Manufacturer's Date or symbol
- 5) Others (if necessary)

### (2) Shipping carton marking

• Shipping carton marking shall consist of :

- 1) Parts name
- 2) Quantity

[ 4 ] Quantity

- 3 000 pcs./reel

[ 5 ] Storage environment

- (1) To storage the reel at +15 °C to +35 °C, 25 %RH to 85 %RH of Humidity.
- (2) To open the packing just before using.
- (3) Not to expose the sun.
- (4) Not to storage with some erosive chemicals.
- (5) Nothing is allowed to put on the reel or carton to prevent mechanical damage.

[ 6 ] Handling

To handle with care to prevent the damage of tape, reel and products.

## X-ON Electronics

Largest Supplier of Electrical and Electronic Components

*Click to view similar products for [Crystals](#) category:*

*Click to view products by [Epson](#) manufacturer:*

Other Similar products are found below :

[CX3225GB25000M0PPSZ1](#) [718-13.2-1](#) [MC405 32.0000K-R3:PURE SN](#) [7A-40.000MAAE-T](#) [FL2000085](#) [99-BU](#) [9B-15.360MBBK-B](#) [9C-7.680MBBK-T](#) [H10S-12.000-18-EXT-TR](#) [ABC2-6.000MHZ-D4Z-T](#) [ABLS-20.000MHZ-D2-T](#) [ABS071-32.768KHZ-6-T](#) [R38-32.768-12.5-5PPM-NPB](#) [BTD1062E05A-513](#) [21U15A-21.4MHZ](#) [RTX-781DF1-S-20.950](#) [LFXTAL066198Cutt](#) [9C-14.31818MBBK-T](#) [A-11.000MHZ-27](#) [ABL-27.000MHZ-B4Y-T](#) [ABM11-132-24.000MHZ-T3](#) [ABM3B1-25.000MHZ-D2Y-T](#) [SPT2A-.032768B](#) [SPT2A.032768G](#) [SSPT7F-9PF20-R](#) [FX325BS-38.88EEM1201](#) [LFXTAL065253Cutt](#) [LFXTAL066431Cutt](#) [XT9S20ANA14M7456](#) [XT9SNLANA16M](#) [646G-24-2](#) [7A-24.576MBBK-T](#) [7B-30.000MBBK-T](#) [7A-14.31818MBBK-T](#) [6504-202-1501](#) [6526-202-1501](#) [ABLS-12.000MHZ-B2Y-T](#) [ABLS-10.000MHZ-D3W-T](#) [7A-10.000MBBK-T](#) [SG636PCE-20.000MC](#) [3404](#) [E1SAA18-25.000M TR](#) [CM315D32768EZFT](#) [C1E-24.000-7-2020-R](#) [C1E-19.200-12-1530-X-R](#) [C1E-16.000-12-1530-X-R](#) [FL5000014](#) [EUCA18-3.1872M](#) [FX0800015](#) [425F35E027M0000](#)