

*Application manual*

**Real Time Clock Module**

**RX8130CE**

ETM50E-07

Product name	Product number
RX8130CE	X1B000311000100

---

## NOTICE : PLEASE READ CAREFULLY BELOW BEFORE THE USE OF THIS DOCUMENT

---

1. The content of this document is subject to change without notice. Before purchasing or using Epson products, please contact with sales representative of Seiko Epson Corporation ("Epson") for the latest information and be always sure to check the latest information published on Epson's official web sites and resources.
2. This document may not be copied, reproduced, or used for any other purposes, in whole or in part, without Epson's prior consent.
3. Information provided in this document including, but not limited to application circuits, programs and usage, is for reference purpose only. Epson makes no guarantees against any infringements or damages to any third parties' intellectual property rights or any other rights resulting from the information. This document does not grant you any licenses, any intellectual property rights or any other rights with respect to Epson products owned by Epson or any third parties.
4. Using Epson products, you shall be responsible for safe design in your products; that is, your hardware, software, and/or systems shall be designed enough to prevent any critical harm or damages to life, health or property, even if any malfunction or failure might be caused by Epson products. In designing your products with Epson products, please be sure to check and comply with the latest information regarding Epson products (including, but not limited to this document, specifications, data sheets, manuals, and Epson's web site). Using technical contents such as product data, graphic and chart, and technical information, including programs, algorithms and application circuit examples under this document, you shall evaluate your products thoroughly both in stand-alone basis and within your overall systems. You shall be solely responsible for deciding whether to adopt/use Epson products with your products.
5. Epson has prepared this document carefully to be accurate and dependable, but Epson does not guarantee that the information is always accurate and complete. Epson assumes no responsibility for any damages you incurred due to any misinformation in this document.
6. No dismantling, analysis, reverse engineering, modification, alteration, adaptation, reproduction, etc., of Epson products is allowed.
7. Epson products have been designed, developed and manufactured to be used in general electronic applications and specifically designated applications ("Anticipated Purpose"). Epson products are NOT intended for any use beyond the Anticipated Purpose that requires particular quality or extremely high reliability in order to refrain from causing any malfunction or failure leading to critical harm to life and health, serious property damage, or severe impact on society, including, but not limited to listed below ("Specific Purpose"). Therefore, you are strongly advised to use Epson products only for the Anticipated Purpose. Should you desire to purchase and use Epson products for Specific Purpose, Epson makes no warranty and disclaims with respect to Epson products, whether express or implied, including without limitation any implied warranty of merchantability or fitness for any Specific Purpose. Please be sure to contact our sales representative in advance, if you desire Epson products for Specific Purpose: Space equipment (artificial satellites, rockets, etc.) / Transportation vehicles and their control equipment (automobiles, aircraft, trains, ships, etc.) / Medical equipment / Relay equipment to be placed on sea floor / Power station control equipment / Disaster or crime prevention equipment / Traffic control equipment / Financial equipment Other applications requiring similar levels of reliability as the above
8. Epson products listed in this document and our associated technologies shall not be used in any equipment or systems that laws and regulations in Japan or any other countries prohibit to manufacture, use or sell. Furthermore, Epson products and our associated technologies shall not be used for the purposes of military weapons development (e.g. mass destruction weapons), military use, or any other military applications. If exporting Epson products or our associated technologies, please be sure to comply with the Foreign Exchange and Foreign Trade Control Act in Japan, Export Administration Regulations in the U.S.A (EAR) and other export-related laws and regulations in Japan and any other countries and to follow their required procedures.
9. Epson assumes no responsibility for any damages (whether direct or indirect) caused by or in relation with your non-compliance with the terms and conditions in this document or for any damages (whether direct or indirect) incurred by any third party that you give, transfer or assign Epson products.
10. For more details or other concerns about this document, please contact our sales representative.
11. Company names and product names listed in this document are trademarks or registered trademarks of their respective companies.

©Seiko Epson Corporation 2021. All rights reserved.

## ETM50E Revision History

Rev. No.	Date	Page	Description
01	---	---	---
02	2015/10/05		Release
03	2016/5/10	1	Corrected a the block diagram.
		4	Add description to [3.2. Pin Functions].
		9	Corrected a [10.1. Characteristic for the fluctuation of the power supply ]
		13	Corrected a [7] Clock output function]
		27	Corrected a [14.7.2. Related register of Battery backup switchover function]
04	2016/9/20	3	Updated the Recommended soldering pattern. Optimization of the text.
05	2016/1/23	2	Added terminal processing when output terminal is not used.
		3	Added typical value of external dimensions.
		3	Added recommended soldering pattern.
		6	Corrected Max. value of High- Level input voltage.
		8	Corrected reset delay time (at recovery form backup).
		9	Corrected access wait time.
		20	Changed 7) TSTP bit related table.
		21	Added timer circuit block diagram
		25	Added alarm circuit block diagram
		27	Added time update circuit block diagram
		30	Corrected table operation stages of voltage detection.
		36	36 Added comment to wait time.
		37	Added comments related to STOP bit in 3)The setting of the clock and calendar.
06	2019/7/31	42	Added address circulation table of auto increment function. -06 31 Jul 2019 5 Added Figure 4-4. Circuit EX4.
		5	Added Figure 4-4. Circuit EX4.
		9	Added Figure 9-1,9-2,9-3 Re-chargeable battery current
		17	Corrected Table 13-1. Register table (expression Z)
		20	Added Figure 14-1. Basic (32kHz oscillation, counter, FOUT) Function
		32 to 41	Fully revised (battery Backup switching)
		40	Reference characteristics of the charge current in VBAT.
		53	Added Figure 14-33. Typical MCU connection
		53	Added Figure 14-34 32kHz oscillator connection
		54	Added Tables
		55	Added Figures

07	2021/7/5	All	Table number. serialization
		All	Figure number. serialization
		All	The link to index was added to the all footer.
		7	<a href="#">Power supply connection</a> , "VD" symbol was deleted. Ex: VD3.0 to 3.0 V
		9	<a href="#">Recommended Operation Condition</a> As for interface voltage Min., Both spec mentioned, INIEN=0 and INIEN=1.
		14	Optimized this chapter structure <a href="#">10. Interface timing when power is turned ON / OFF</a>
		16	1) 2) <a href="#">The Power-On Chart</a> was separated into two cases with and without battery. 3) Correction of errors of tF condition. Error: tF = -V <sub>DET1</sub> from "V <sub>DD</sub> OFF". Correct: tF = V <sub>CLK</sub> from "V <sub>DD</sub> OFF". 4) Addition that describes the risk of not satisfying tR / tF 5) Description of <a href="#">Table11</a> was updated.
		21	<a href="#">13.2.2. Register initial value</a> Added description, that value are same in after software-Reset.
		39	1) <a href="#">Graph is added for the charge current to Battery.</a> <i>Figure27 V<sub>BAT</sub> charge current characteristics V<sub>DD</sub> = 3.0 V, 5.5 V</i> 2) <a href="#">Charging circuit diagram is added for reference.</a> <i>Figure 28 Re-chargeable battery connection</i>
		40	Renewed the description of <a href="#">INIEN-bit</a> .
		46	Updated note of <a href="#">STOP-bit</a> .
		48, 49	Charge enabled timing was fine corrected in Timing Chart. <a href="#">Figure 37</a> and <a href="#">Figure 38</a>
		54	Software-Reset-Flow was added. <a href="#">Software-Reset</a> .
		55	INIEN bit processing was added to <a href="#">Flow-chart of initializing</a> .
64	Pin connection was added for use as <a href="#">32.768 kHz-Oscillator</a> .		

## Table of contents

ETM50E Revision History .....	2
Table of contents .....	4
1. Overview.....	6
2. Block Diagram .....	6
3. Terminal description.....	7
3.1. Terminal connections.....	7
3.2. Pin Functions .....	7
4. Examples of external connection .....	8
4.1. Examples of power supply connection.....	8
5. External Dimensions / Marking Layout.....	9
6. Absolute Maximum Ratings .....	10
7. Recommended Operating Conditions .....	10
8. Frequency Characteristics .....	10
9. Electrical Characteristics.....	11
10. Interface timing when power is turned ON / OFF.....	15
10.1. Restrictions of I <sup>2</sup> C-Bus interface in the initial power on.....	15
10.2. Precautions for power ON / OFF .....	15
10.3 V <sub>DD</sub> ON / OFF when using power switching (INIEN = 1) .....	16
10.4 V <sub>DD</sub> ON / OFF when power switching is not used (INIEN = 0) .....	16
11. Reference Information.....	17
12. Application Notes.....	18
13. Overview of Functions and Registers.....	19
13.1. Overview of Functions .....	19
13.2. Register Table .....	20
13.2.1. Register Table .....	20
13.2.2. Register initial value and Read/Write operation Table.....	21
13.3. Description of registers .....	22
13.3.1. Clock and calendar registers (0h ~ 16h).....	22
13.3.2. RAM registers (20h ~ 23h) .....	22
13.3.3. Alarm registers (17h ~ 19h).....	22
13.3.4. Timer setting and Timer counter register for wakeup timer (1Ah ~ 1Eh) .....	22
13.3.5. Function-related register 1 (1Ch ~ 1Eh) .....	22
13.3.6. Function-related register 2 (1Fh).....	23
13.3.7. Digital offset register (30h).....	23
14. Functions .....	24
14.1. Clock calendar explanation.....	24
14.1.1. Clock counter.....	24
14.1.2. Week counter .....	25
14.1.3. Calendar counter.....	25
14.2. Wakeup Timer Interrupt Function .....	26
14.2.1. Related registers for function of wakeup timer interrupt function.....	26
14.2.2. Wakeup timer start timing.....	29
14.2.3. Wakeup timer interrupt interval (example).....	30
14.2.4. Diagram of wakeup timer interrupt function .....	30
14.3. Alarm Interrupt Function .....	32
14.3.1. Related registers for Alarm interrupt functions.....	32
14.3.2. Examples of alarm settings .....	33
14.4. Time Update Interrupt Function .....	35
14.4.1. Related registers for time update interrupt functions. ....	35

14.4.2. Time update interrupt function diagram .....	36
14.5. Oscillation stop detection function .....	37
14.5.1. Related registers for Oscillation stop and Voltage low detect function. ....	37
14.6. FOUT function .....	37
14.6.1. FOUT control register. ....	37
14.6.2. FOUT function Table. ....	37
<b>15 Battery backup switchover function .....</b>	<b>38</b>
15.1. Description of Battery backup switchover function.....	38
15.2 Reference characteristics of switching elements .....	38
15.3 Reference characteristics of the charge current .....	39
15.4 Re-Chargeable battery Voltage Current features .....	39
15.5. Related register of Battery backup switchover function .....	40
15.6 Detection voltage setting.....	45
15.7. Power supply control .....	47
15.8 Main power supply ( $V_{DD}$ ) voltage and operation state (INIEN bit = 1).....	48
15.9. Backup power supply ( $V_{BAT}$ ) voltage and a charge state .....	49
<b>16. Reset output function .....</b>	<b>50</b>
<b>17. Digital offset function.....</b>	<b>51</b>
17.1.Digital offset register .....	51
17.2. Effect of the digital offset function to other functions.....	52
<b>18. Flow-chart.....</b>	<b>53</b>
18.1 Initializing example .....	53
18.2 Software Reset .....	54
18.3 Example of Initialization routine .....	55
18.4 Example of Initialization routine (only clock usage) .....	56
18.5 The setting of the clock and calendar .....	56
18.6 The reading of the clock and calendar .....	57
18.7 Setting example of the wakeup timer interrupt function .....	57
18.8 Setting example of the Alarm interrupt function .....	58
<b>19 Serial communication.....</b>	<b>59</b>
19.1 Overview of I <sup>2</sup> C-Bus Interface.....	59
19.2 Data transfers .....	59
19.3 Starting and stopping I <sup>2</sup> C-Bus communications.....	59
19.4 Slave address .....	59
19.5 System configuration .....	60
19.6 I <sup>2</sup> C-Bus protocol.....	61
<b>20 Circuit Diagram connection .....</b>	<b>63</b>
20.1 Typical MCU connection.....	63
20.2 32.768 kHz oscillator application connection.....	64
<b>21. Tables.....</b>	<b>65</b>
<b>22. Figures.....</b>	<b>66</b>
<b>Contacts .....</b>	<b>68</b>

## Build-in backup battery charge control function SERIAL-INTERFACE REAL TIME CLOCK MODULE

# RX8130 CE

- Built in frequency adjusted 32.768 kHz crystal unit.
- Interface type : I<sup>2</sup>C-Bus interface (up to 400 kHz)
- Wide operating voltage range : 1.6 V to 5.5 V
- Wide timekeeper voltage range : 1.1 V to 5.5 V
- Auto power switching function : Switchover by main power supply monitor.
- Backup battery charge control function : For rechargeable lithium batteries.
- Low leak current : A leak current from a backup power supply pin. 5nA Max.
- Reset function : At low supply voltage, external reset signal is generated.
- Low voltage detection : Supply voltage and backup voltage detection
- Time correction : Digital offset function
- The various function including full calendar, alarm, timer, etc.

## 1. Overview

RX8130CE is a real-time clock module of the I<sup>2</sup>C serial interface system, 32.768 kHz crystal and oscillator is built-in it. The real-time clock function incorporates not only a calendar and clock counter for the year, month, day, day of the week, hour, minute, and second, but also a time alarm, wakeup timer, and time update interruption, among other features. By the backup battery charge control function and the interface power supply input pin, RX8130CE can support various power supply circuitries. All these many functions are implemented in a thin, compact ceramic package, which makes it suitable for various kinds of small electronic devices, low power IoT devices etc.

## 2. Block Diagram

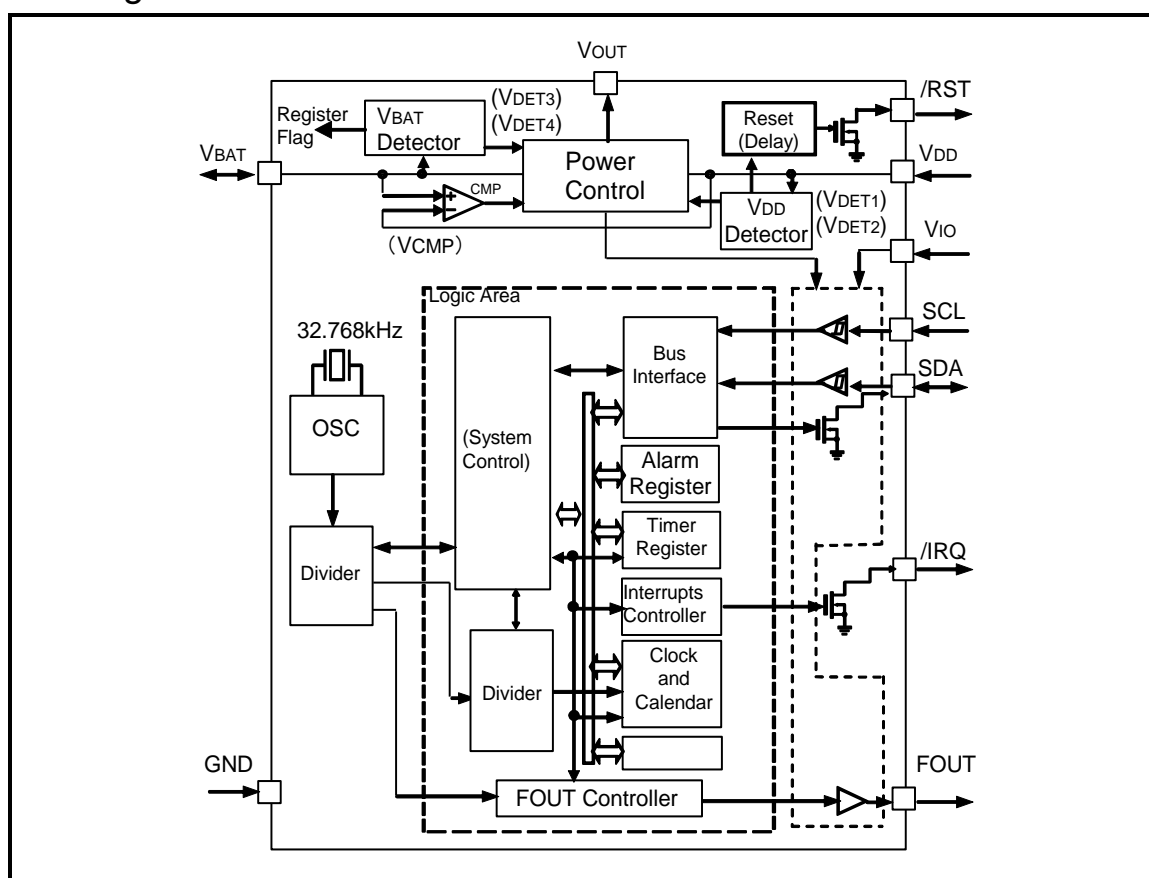


Figure 1 Block Diagram

## 3. Terminal description

## 3.1. Terminal connections

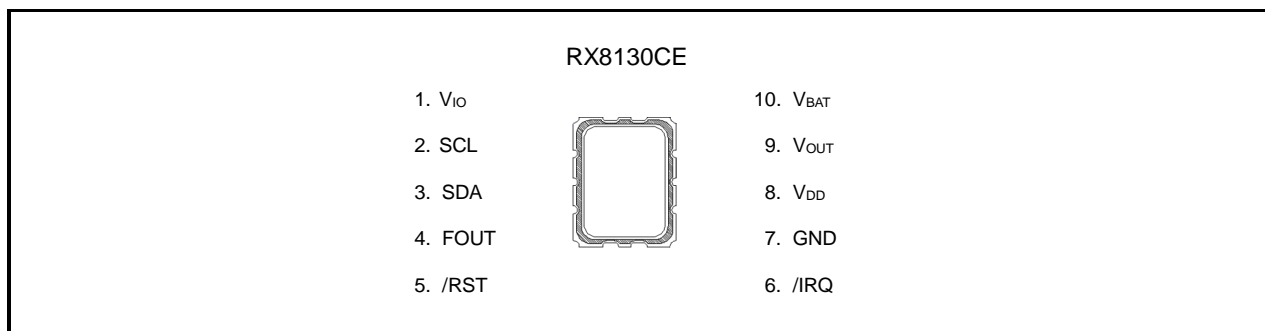


Figure 2 Package

## 3.2. Pin Functions

Table 1 Pin Description

Signal name	I/O	Function
SCL	Input	Serial clock input pin.
SDA	Bi-directional	Data input and output pin.
FOUT	Output	Frequency output pin with output control function. (CMOS) Output frequency can be selected as 32.768k Hz, 1024 Hz, 1 Hz.
/RST	Output	Even in the backup mode, this pin can operate. In case of V <sub>DD</sub> voltage drop detection, a reset signal is outputted. (N-ch open drain) In case of V <sub>DD</sub> voltage rise detection, it releases the reset signal after 60ms.
/IRQ	Output	Interrupt output by Alarm and Timer events.(N-ch open drain) This pin can output even a backup mode.
V <sub>DD</sub>	–	This is a power-supply pin for the internal logic.
V <sub>IO</sub>	–	This is an interface power supply pin. Connect the same power supply as the MCU.
V <sub>OUT</sub>	–	Internal voltage output pin. Connect smoothing capacitor of 1.0uF
V <sub>BAT</sub>	–	This is a power supply pin for backup battery. This is a pin to connect a large-capacity capacitor, a secondary battery, and a primary battery. In a backup mode, the voltage is supplied inside by this pin.
GND	–	Connected to a ground.

Note: Connect a bypass capacitor rated at least 0.1μF between power supply pins and GND pin.

Note: Input pins are able to input up to 5.5V regardless of V<sub>IO</sub> applied voltage.

Note: Open drain pins are able to Pull-up to 5.5V regardless of V<sub>IO</sub> applied voltage.

Note: Use the FOUT, /RST, /IRQ terminals as Open when not in use. Don't connected to GND or V<sub>DD</sub>



## 4. Examples of external connection

### 4.1. Examples of power supply connection

(1) Case of different I/F voltage and charge voltage

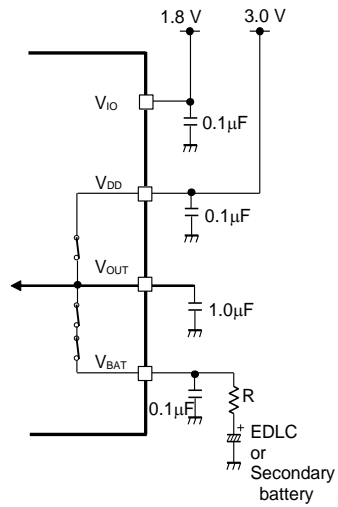


Figure 3 Circuit EX1

(2) Same I/F voltage and charge voltage (CHGEN=1, INIEN=1)

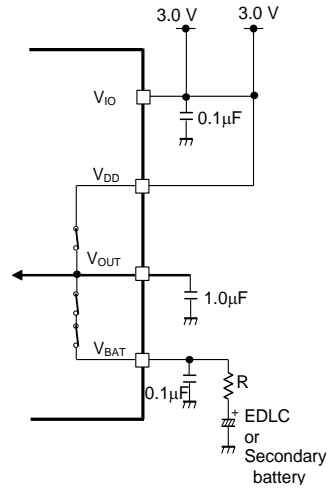


Figure 4 Circuit EX2

(3) Primary battery as backup (CHGEN=0)

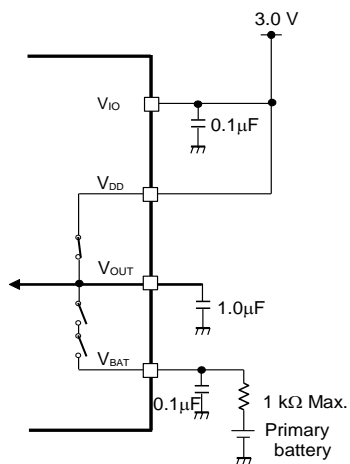


Figure 5 Circuit EX3

(4) Case of VDD supply only.

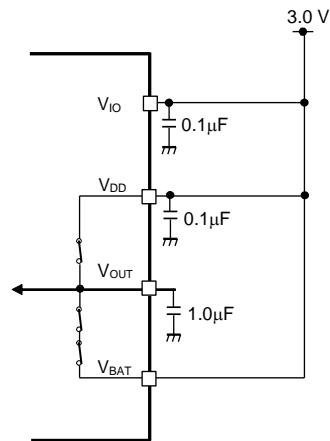


Figure 6 Circuit EX4

5. External Dimensions / Marking Layout

5.1. External Dimensions

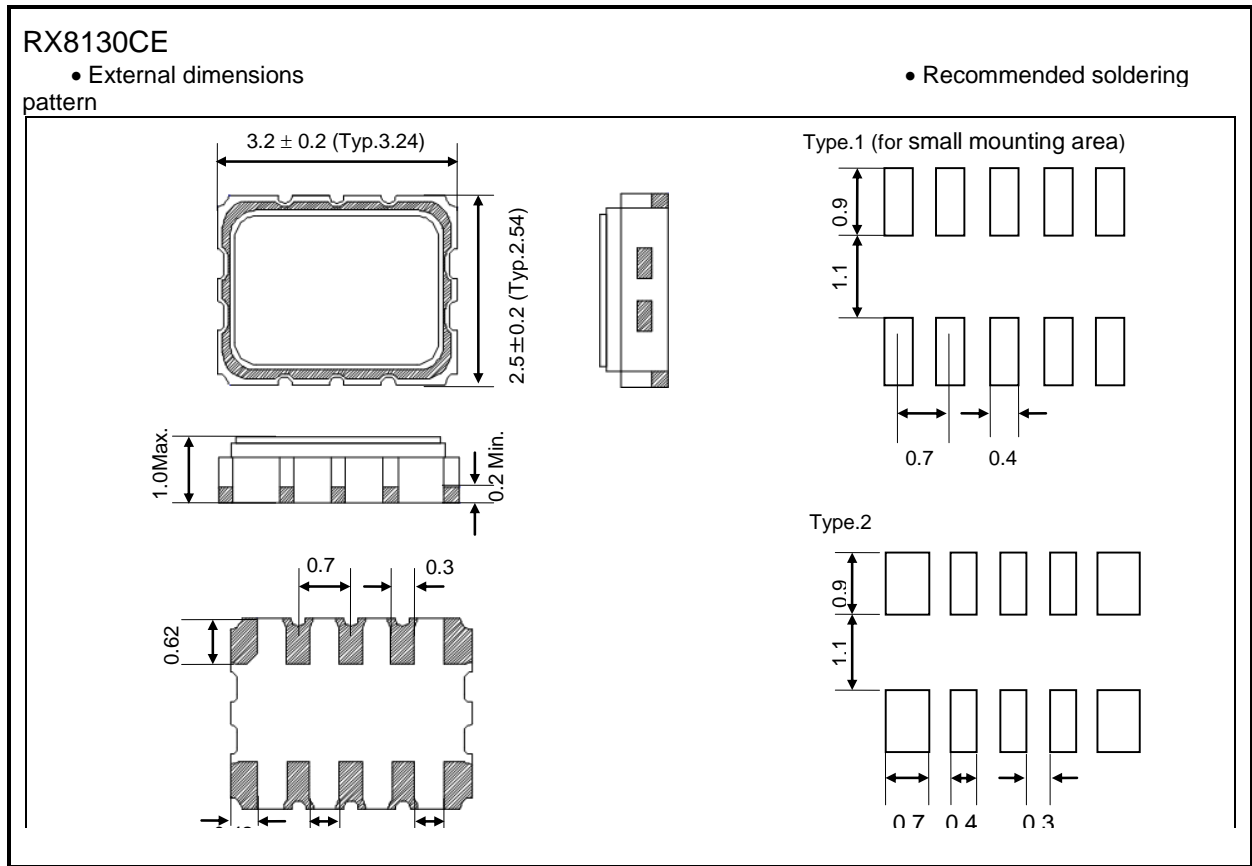


Figure 7 External Dimension and Soldering pattern

5.2. Marking Layout

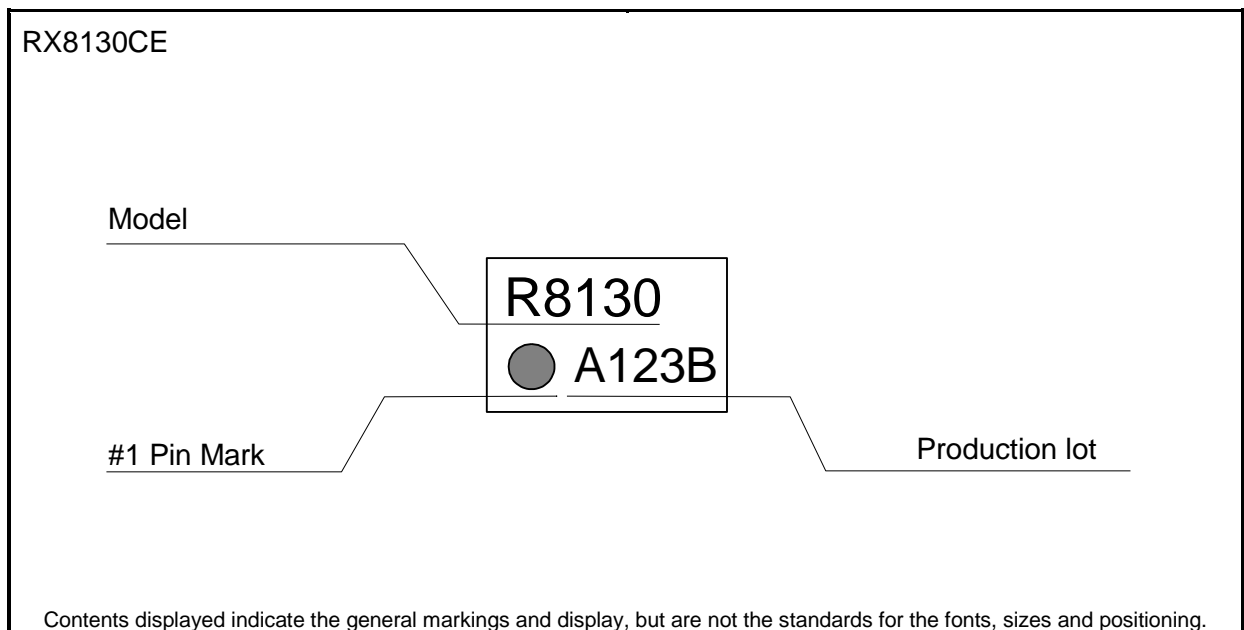


Figure 8 Marking Layout

## 6. Absolute Maximum Ratings

Table 2 Absolute Maximum Rating

Item	Symbol	Condition	Rating	Unit
Supply voltage	V <sub>DD</sub>	–	–0.3 ~ +6.5	V
Internal voltage	V <sub>OUT</sub>	–	–0.3 ~ +6.5	V
Backup supply voltage	V <sub>BAT</sub>	–	–0.3 ~ +6.5	V
Interface supply voltage	V <sub>IO</sub>	–	–0.3 ~ +6.5	V
Input voltage 1	V <sub>IN1</sub>	SCL, SDA	–0.3 ~ +6.5	V
Output voltage 1	V <sub>OUT1</sub>	/RST, /IRQ, SDA	–0.3 ~ +6.5	V
Output voltage 2	V <sub>OUT2</sub>	FOUT	–0.3 ~ V <sub>IO</sub> +0.3	V
		When stored separately, without packaging	–55 ~ +125	°C

## 7. Recommended Operating Conditions

Table 3 Recommended Operation Condition

Unless otherwise specified, GND = 0 V, Ta = –40 °C to +85 °C

Item	Symbol	Condition	Min.	Typ.	Max.	Unit
Operating supply voltage	V <sub>DD</sub>	Normal operation mode (V <sub>DD</sub> )	1.25	3.0	5.5	V
Interface supply voltage	V <sub>IO</sub>	INIEN = 0	1.6	3.0	5.5	V
		INIEN = 1	–V <sub>DET1</sub>	3.0	5.5	V
Clock supply voltage	V <sub>CLK</sub>	Backup operation mode (V <sub>OUT</sub> )	1.1	3.0	5.5	V
Operating temperature	T <sub>use</sub>	No condensation	–40	+25	+85	°C

Minimum clock supply voltage of V<sub>CLK</sub> is available after initializing in V<sub>DD</sub>>V<sub>DET1</sub>.

## 8. Frequency Characteristics

Table 4 Frequency Characteristics

Unless otherwise specified, GND = 0 V, Ta = –40 °C to +85 °C

Item	Symbol	Condition	Min.	Typ.	Max.	Unit
Output frequency	f <sub>o</sub>		32.768 (Typ.)			kHz
Frequency stability	Δf/f	Ta = +25 °C V <sub>DD</sub> = 3.0 V	5 ± 23 (*1)			× 10 <sup>–6</sup>
Frequency/voltage characteristics	f/V	Ta = +25 °C V <sub>DD</sub> = 1.1 V ~ 5.5 V	–2		+2	× 10 <sup>–6</sup> / V
Frequency/temperature characteristics	T <sub>op</sub>	Ta = –20 °C ~ +70 °C V <sub>DD</sub> = 3.0 V ; +25 °C reference	–120		+10	× 10 <sup>–6</sup>
Oscillation start time	t <sub>sta</sub>	V <sub>DD</sub> = 2.75 V ~ 5.5 V Internal Crystal oscillation start		0.19	1.0	s
Aging	f <sub>a</sub>	Ta = +25 °C, V <sub>BAT</sub> = 3.0 V ; first year	–5		+5	× 10 <sup>–6</sup> / year

\*1) The monthly error is equal to ±60 s Max. (excluding offset)

## 9. Electrical Characteristics

## 9.1. DC characteristics

Table 5 DC characteristics (1)

Unless otherwise specified, GND = 0 V,  $V_{BAT} = V_{DD} = 1.1 \text{ V} \sim 5.5 \text{ V}$ ,  $V_{IO} = 1.6 \text{ V} \sim 5.5 \text{ V}$  Ta =  $-40 \text{ }^\circ\text{C}$  to  $+85 \text{ }^\circ\text{C}$ 

Item	Symbol	Condition	Min.	Typ.	Max.	Unit
Current consumption in normal operation mode without FOUT (1)	$I_{DD}$	SCL = SDA = "H", F <sub>OUT</sub> = OFF, /IRQ = OFF, $V_{DD}=V_{IO} = 3.0 \text{ V}$ , $-40 \text{ }^\circ\text{C} \sim +85 \text{ }^\circ\text{C}$ CHGEN = 0b or $V_{BAT} \geq V_{DET3}$		1500	1600	nA
Current consumption in normal operation with FOUT (2)	$I_{32k}$	SCL = SDA = "H", F <sub>OUT</sub> = 32.768 kHz, /IRQ = OFF, $V_{DD}=V_{IO} = 3.0 \text{ V}$ , $-40 \text{ }^\circ\text{C} \sim +85 \text{ }^\circ\text{C}$ FOUT pin CL = 15 pF CHGEN = 0b or $V_{BAT} \geq V_{DET3}$		3.5	4.0	$\mu\text{A}$
Current consumption in backup mode(3)	$I_{BAT}$	SCL = SDA = "L", $V_{BAT} = 3.0 \text{ V}$ , $V_{DD}=V_{IO} = 0.0 \text{ V}$ , $-40 \text{ }^\circ\text{C} \sim +85 \text{ }^\circ\text{C}$		300	500	nA
Detector Threshold Voltage1 (rising edge of $V_{DD}$ )	$+V_{DET11}$	2.75 V setting Reset-releases	2.72	2.80	2.88	V
Detector Threshold Voltage1 (falling edge of $V_{DD}$ )	$-V_{DET11}$	2.75 V setting, Reset output	2.67	2.75	2.83	V
Detector Threshold Voltage2 (rising edge of $V_{DD}$ )	$+V_{DET12}$	2.7 V setting Reset-releases	2.67	2.75	2.83	V
Detector Threshold Voltage2 (falling edge of $V_{DD}$ )	$-V_{DET12}$	2.7 V setting, Reset output	2.62	2.70	2.78	V
Detector Threshold Voltage3 (rising edge of $V_{DD}$ )	$+V_{DET2}$	Switching voltage from $V_{BAT}$ to $V_{DD}$	1.25	1.35	1.45	V
Detector Threshold Voltage3 (falling edge of $V_{DD}$ )	$-V_{DET2}$	Switching voltage from $V_{DD}$ to $V_{BAT}$	1.20	1.30	1.40	V
Detector Threshold Voltage1 (rising edge of $V_{BAT}$ )	$+V_{DET31}$	Charge stop voltage (full charge) BFVSEL=00b	2.94	3.02	3.10	V
Detector Threshold Voltage1 (falling edge of $V_{BAT}$ )	$-V_{DET31}$	Recharge voltage. BFVSEL=00b	2.89	2.97	3.05	V
Detector Threshold Voltage2 (rising edge of $V_{BAT}$ )	$+V_{DET30}$	Charge stop voltage (full charge) BFVSEL=10b	2.84	2.92	3.00	V
Detector Threshold Voltage2 (falling edge of $V_{BAT}$ )	$-V_{DET30}$	Recharge voltage. BFVSEL=10b	2.79	2.87	2.95	V
Detector Threshold Voltage3 (rising edge of $V_{BAT}$ )	$+V_{DET32}$	Charge stop voltage (full charge) BFVSEL=01b	3.00	3.08	3.16	V
Detector Threshold Voltage3 (falling edge of $V_{BAT}$ )	$-V_{DET32}$	Recharge voltage. BFVSEL=01b	2.95	3.03	3.11	V
$V_{BAT}$ end voltage	$-V_{DET4}$	Low $V_{BAT}$ detection Register flag $V_{BLF} = 1b$	2.32	2.40	2.48	V
$V_{DD}$ - $V_{OUT}$ off-leak current	$I_{SW1}$	$V_{OUT}=3.0 \text{ V}$ , $V_{DD}=0.0 \text{ V}$			5.0	nA
$V_{BAT}$ - $V_{OUT}$ off-leak current	$I_{SW2}$	$V_{BAT}=3.0 \text{ V}$ , $V_{OUT}=0.0 \text{ V}$			5.0	nA

**Table 6 DC characteristics(2)**Unless otherwise specified GND = 0 V V<sub>BAT</sub> = V<sub>DD</sub> = 1.1V~5.5V V<sub>IO</sub>=1.6V ~5.5V Ta = -40 °C to +85 °C

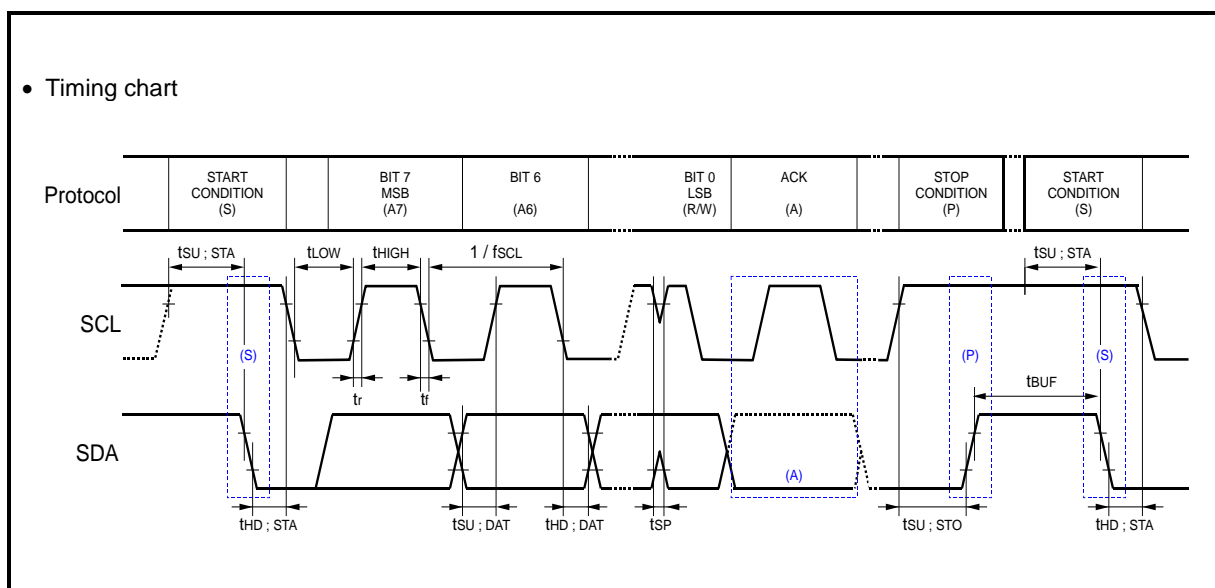
Item	Symbol	Condition		Min.	Typ.	Max.	Unit
V <sub>OUT</sub> output voltage 1	V <sub>VOUT1</sub>	VDD = 3.0 V I <sub>OUT</sub> = 1 mA			VDD-0.06		V
V <sub>OUT</sub> output voltage 2	V <sub>VOUT2</sub>	VBAT = 3.0 V I <sub>OUT</sub> = 0.1 mA			VBAT-0.02		V
High-level input voltage	V <sub>IH1</sub>	SCL, SDA		0.8 × V <sub>IO</sub>		5.5	V
Low-level input voltage	V <sub>IL</sub>	SCL, SDA		GND - 0.3		0.2 × V <sub>IO</sub>	V
High-level output voltage	V <sub>OH</sub>	FOUT	I <sub>OH</sub> = -1 mA	V <sub>IO</sub> -0.5		V <sub>IO</sub>	V
Low-level output voltage	V <sub>OL1</sub>	FOUT	I <sub>OL</sub> = 1 mA	GND		GND+0.5	V
	V <sub>OL2</sub>	/RST,/IRQ	V <sub>IO</sub> = 5 V, I <sub>OL</sub> = 1 mA	GND		GND+0.25	V
	V <sub>OL3</sub>		V <sub>IO</sub> = 3 V, I <sub>OL</sub> = 1 mA	GND		GND+0.4	V
	V <sub>OL4</sub>	SDA	V <sub>IO</sub> ≥ 2 V, I <sub>OL</sub> = 3 mA	GND		GND+0.4	V

9.2. AC characteristics

**Table 7 AC characteristics**

Unless otherwise specified GND = 0 V V<sub>IO</sub> = 1.6 V ~ 5.5 V T<sub>a</sub> = -40°C ~ +85°C

Item	Symbol	Standard-Mode (f <sub>SCL</sub> =100 kHz)		Fast-Mode (f <sub>SCL</sub> =400 kHz)		Unit
		Min.	Max.	Min.	Max.	
SCL clock frequency	f <sub>SCL</sub>		100		400	kHz
Start condition setup time	t <sub>SU;STA</sub>	4.7		0.6		μs
Start condition hold time	t <sub>HD;STA</sub>	4.0		0.6		μs
Data setup time	t <sub>SU;DAT</sub>	250		100		ns
Data hold time	t <sub>HD;DAT</sub>	0		0		ns
Stop condition setup time	t <sub>SU;STO</sub>	4.0		0.6		μs
Bus idle time between start condition and stop condition	t <sub>BUF</sub>	4.7		1.3		μs
Time when SCL = "L"	t <sub>LOW</sub>	4.7		1.3		μs
Time when SCL = "H"	t <sub>HIGH</sub>	4.0		0.6		μs
Rise time for SCL and SDA	t <sub>r</sub>		1.0		0.3	μs
Fall time for SCL and SDA	t <sub>f</sub>		0.3		0.3	μs
Allowable spike time on bus	t <sub>SP</sub>		50		50	ns



**Figure 9 I<sup>2</sup>C-Bus Interface Timing Chart**

**Warning:** When accessing this device, all communication from transmitting the start condition to transmitting the stop condition after access should be completed within 0.95 seconds.  
If such communication requires 0.95 seconds or longer, the I<sup>2</sup>C-Bus interface is reset by the internal bus timeout function.

When bus-time-out occur, SDA turns to Hi-Z input mode.

**Note:** During access to the time registers, the time counting is on hold. This means that up to 1 second can be "lost" in case of unsuccessful communication as mentioned above.

Please make sure to send I<sup>2</sup>C start condition before actual transmission of the RTCs slave address as otherwise the slave address appears to be shifted by 1 bit.

**Table 8 AC characteristics (FOUT)**

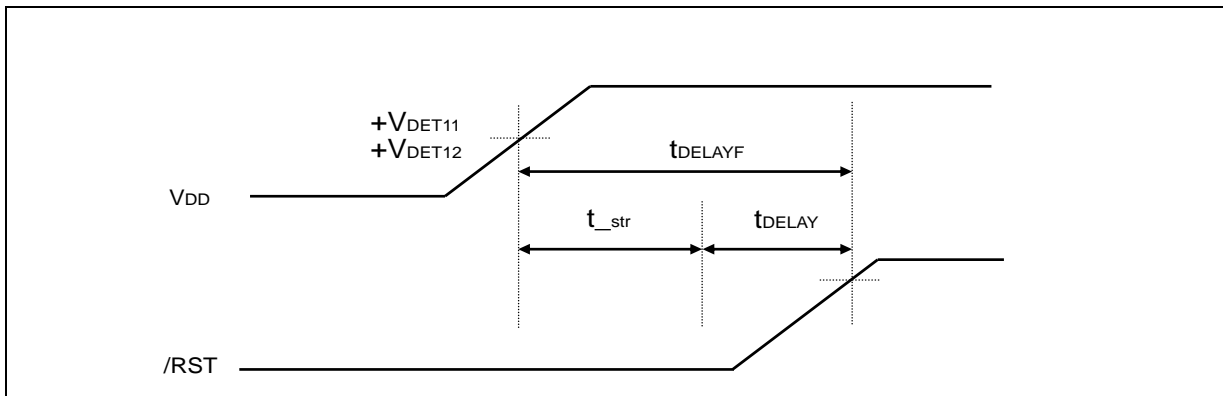
※Unless otherwise specified GND = 0 V , V<sub>IO</sub> = 1.6 V ~ 5.5 V , T<sub>a</sub> = -40 °C ~ +85 °C

Item	Symbol	Condition	Min.	Typ.	Max.	Unit
FOUT symmetry	SYM	50% V <sub>IO</sub> Level	40		60	%

9.2.3. AC characteristics(3)

**Table 9 AC Characteristics (Reset)**

Item	symbol	Min.	Typ.	Max.	unit
Reset internal delay time	$t_{DELAY}$		60		ms
Reset delay time (Initial power ON)	$t_{DELAY\_F}$		250 ( $t_{str} + t_{DELAY}$ )		ms

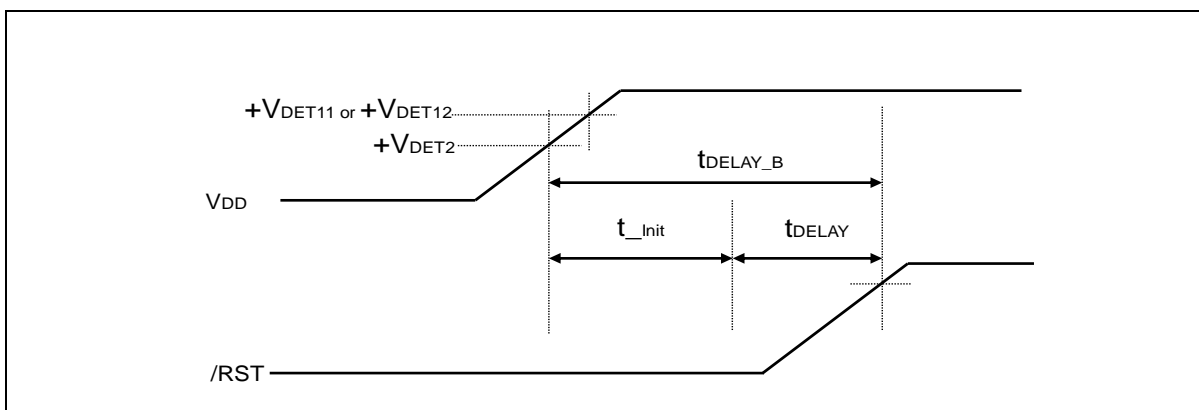


\*  $t_{str}$  is oscillation startup time. See "Table4".

**Figure 10 Reset signal timing chart (Power Initial Supply)**

**Table 10 Reset timing**

Item	symbol	Min.	Typ.	Max.	unit
Voltage detection time to reset release.	$t_{int}$			35	ms
Reset delay time (Recovery from Backup) $t_{int} + t_{DELAY}$	$t_{DELAY\_B}$	60		95	ms



$t_{int}$  is an intermittence drive timing of a  $V_{DET2}$  detect circuit. Maximum value is 35 ms.

**Figure 11 Reset signal timing chart ( Backup resume )**

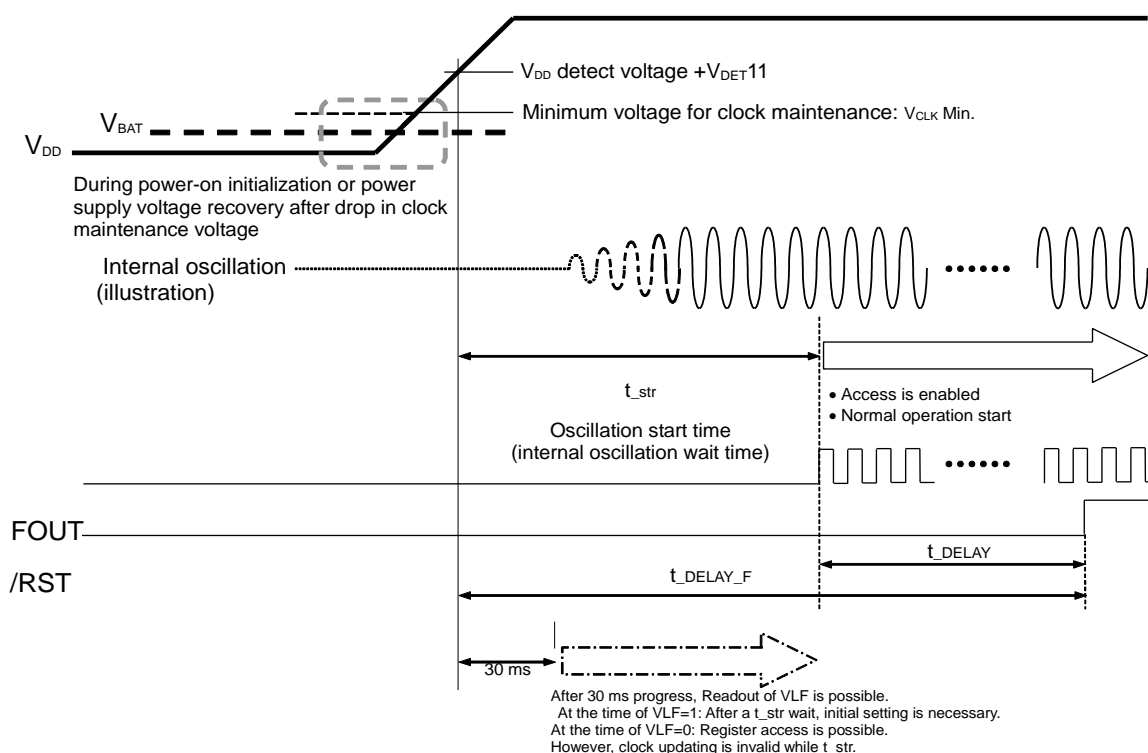
## 10. Interface timing when power is turned ON / OFF

### 10.1. Restrictions of I<sup>2</sup>C-Bus interface in the initial power on.

The operation of the RTC register is linked to the oscillation clock of the built-in crystal unit. □

Therefore, it will not operate normally when the oscillation is stopped.

It is recommended that the initialization at the time of initial power-on is performed after the oscillation start time  $t_{str}$  characteristic.



**Figure 12 Power supply initial sequence**

### 10.2. Precautions for power ON / OFF

- 1: To ensure that the power-on reset works at the initial power-on keep V<sub>DD</sub>=V<sub>BAT</sub>=GND for 10 seconds or more before V<sub>DD</sub> = ON.
- 2: Initial power-on tR1 is a necessary condition for enabling power-on reset. If this condition is not satisfied, power-on reset may not work. As a result, the time accuracy and current consumption may not meet the specifications. Please reset by software. See [18.2 Software Reset](#).
- 3: When fluctuation of V<sub>DD</sub> is out of specifications, t<sub>F</sub> or tR2, it may occur the followings, a momentary stop of crystal oscillation, a set of VLF by V<sub>OUT</sub> voltage drop lower than V<sub>CLK</sub> and so on.
- 4: The timing at which the I<sup>2</sup>C-Bus interface is enabled differs in when the initial power of V<sub>DD</sub> is turned on and when V<sub>DD</sub> is turned on from backup mode. See the t<sub>CL</sub> and t<sub>CU</sub> specifications in the chart below.
- 5: These specifications don't mean a noise characteristic of a power supply of RTC. Do not use amplitude signal output from a signal generator etc, as a power source.



10.3 V<sub>DD</sub> ON / OFF when using power switching (INIEN = 1)

See "4.1. Examples of power supply connection"\_Circuit EX1, 2, 3.

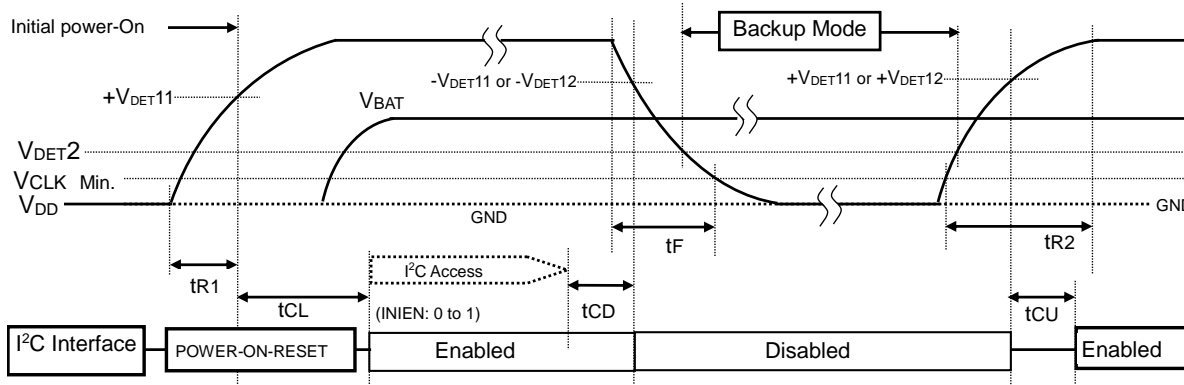


Figure 13 Power-On sequence1

10.4 V<sub>DD</sub> ON / OFF when power switching is not used (INIEN = 0)

See "4.1. Examples of power supply connection"\_Circuit EX4.

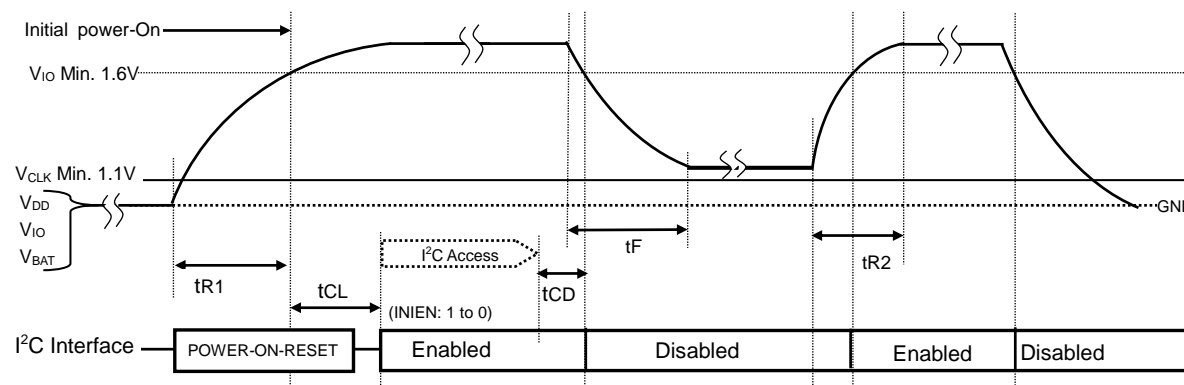


Figure 14 Power-On sequence2

Table 11 Power supply characteristics

Item	Symbol	Condition	Min.	Typ.	Max.	Unit
Power supply rise time	t <sub>R1</sub>	From GND to V <sub>DD</sub> = +V <sub>DET11</sub>	0.1	-	10	ms / V
Access wait time	t <sub>CL</sub>	V <sub>DD</sub> = +V <sub>DET11</sub> to Access start		-	-30	ms
Access suspended time	t <sub>CD</sub>	The time from the end of I <sup>2</sup> C access to the disable of I <sup>2</sup> C	0	-	-	ms
Power supply fall time	t <sub>F</sub>	From V <sub>DD</sub> to V <sub>DD</sub> = V <sub>CLK</sub>	1	-	-	ms / V
Power supply rise time	t <sub>R2</sub>	Time to restore V <sub>DD</sub> to operating voltage	1	-	-	ms / V
Access wait time	t <sub>CU</sub>	V <sub>DD</sub> =+V <sub>DET1x</sub> to Access start		-	35	ms

t<sub>R1</sub>, t<sub>R2</sub>, and t<sub>F</sub> specify that there is no voltage fluctuation faster / slower than the Min / Max specifications within the specified section. The risk when specifications were not satisfied, refer to the following.

Item	Risk of fast fluctuations	Risk of slow fluctuations
t <sub>R1</sub>	Power-On-Reset doesn't occur.	
t <sub>R2</sub>	The FOUT waveform disappears momentarily, and clock time is momentarily delayed.	None
t <sub>F</sub>	A data of RTC loss. A set of VLF.	

V<sub>DD</sub> and V<sub>BAT</sub> in Figures 13 and 14 are the voltages of V<sub>DD</sub> and V<sub>BAT</sub> pins of RX8130CE.

Regarding access to the clock register after the initial power-on,

, See "10.1 restrictions of I<sup>2</sup>C interface in the initial power on". The clock from FOUT is outputted after t<sub>CU</sub>.

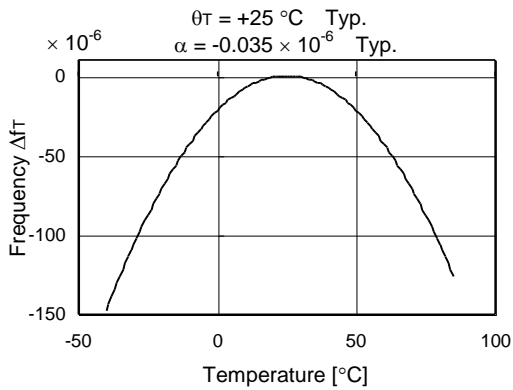
When status of V<sub>DD</sub> = V<sub>BAT</sub> = GND doesn't keep more than 10seconds before initial power-on, the Power-On-Reset may not work even if the t<sub>R</sub> / t<sub>F</sub> specifications are satisfied.

## 11. Reference Information

### 11.1. Reference Data

(1) Example of frequency and temperature characteristics

[ Finding the frequency stability ]



1. Frequency and temperature characteristics can be approximated using the following equations.

$$\Delta f_T = \alpha (\theta_T - \theta_X)^2$$

- $\Delta f_T$  : Frequency deviation in any temperature
- $\alpha [1 / ^\circ\text{C}^2]$  : Coefficient of secondary temperature  
( $-0.035 \pm 0.005$ )  $\times 10^{-6} / ^\circ\text{C}^2$
- $\theta_T [^\circ\text{C}]$  : Ultimate temperature ( $+25 \pm 5 \text{ }^\circ\text{C}$ )
- $\theta_X [^\circ\text{C}]$  : Any temperature

2. To determine overall clock accuracy, add the frequency precision and voltage characteristics.

$$\Delta f/f = \Delta f/fo + \Delta f_T + \Delta f_V$$

- $\Delta f/f$  : Clock accuracy (stable frequency) in any temperature and voltage.
- $\Delta f/fo$  : Frequency precision
- $\Delta f_T$  : Frequency deviation in any temperature.
- $\Delta f_V$  : Frequency deviation in any voltage.

3. How to find the date difference

$$\text{Date Difference} = \Delta f/f \times 86400 \text{ s}$$

\* For example:  $\Delta f/f = 11.574 \times 10^{-6}$  is an error of approximately 1 second / day.

Figure 15 Frequency temperature characteristics

## 12. Application Notes

### 1) Notes on handling

This module uses a C-MOS IC to realize low power consumption. Carefully note the following cautions when handling.

#### (1) Static electricity

While this module has built-in circuitry designed to protect it against electrostatic discharge, the chip could still be damaged by a large discharge of static electricity. Containers used for packing and transport should be constructed of conductive materials. In addition, only soldering irons, measurement circuits, and other such devices which do not leak high voltage should be used with this module, which should also be grounded when such devices are being used.

#### (2) Noise

If a signal with excessive external noise is applied to the power supply or input pins, the device may malfunction or "latch up." In order to ensure stable operation, connect a filter capacitor (preferably ceramic) of greater than 0.1  $\mu\text{F}$  as close as possible to the power supply pins. Also, avoid placing any device that generates high level of electronic noise near this module.

#### (3) Voltage levels of input pins

When the voltage of out of the input voltage specifications range input into an input terminal constantly, a penetration electric current occurs. Thus, current consumption increases very much. This causes Latch-up, and there is the case that, as a result, a built-in IC is destroyed. Please use an input terminal according to input voltage specifications. Furthermore, please input the V<sub>IO</sub> or GND most recent voltage as much as possible.

#### (4) Handling of unused pins

Disposal of unused input terminals. When an input terminal is open state, it causes increase of a consumption electric current and the behavior that are instability. Please fix an unused input terminal to the voltage that is near to V<sub>IO</sub> or GND.

### 2) Notes on packaging

#### (1) Soldering heat resistance.

If the temperature within the package exceeds +260 °C, the characteristics of the crystal oscillator will be degraded and it may be damaged. The reflow conditions within our reflow profile is recommended. Therefore, always check the mounting temperature and time before mounting this device. Also, check again if the mounting conditions are later changed.

#### (2) Mounting equipment

While this module can be used with general-purpose mounting equipment, the internal crystal oscillator may be damaged in some circumstances, depending on the equipment and conditions. Therefore, be sure to check this. In addition, if the mounting conditions are later changed, the same check should be performed again.

#### (3) Ultrasonic cleaning

Depending on the usage conditions, there is a possibility that the crystal oscillator will be damaged by resonance during ultrasonic cleaning. Since the conditions under which ultrasonic cleaning is carried out (the type of cleaner, power level, time, state of the inside of the cleaning vessel, etc.) vary widely, this device is not warranted against damage during ultrasonic cleaning.

#### (4) Mounting orientation

This device can be damaged if it is mounted in the wrong orientation. Always confirm the orientation of the device before mounting.

#### (5) Leakage between pins

Leakage between pins may occur if the power is turned on while the device has condensation or dirt on it. Make sure the device is dry and clean before supplying power to it.

#### (6) Installation of charged battery.

When a charged backup battery is installed by soldering, battery connection terminal of this device should connect to GND, beforehand.

## 13. Overview of Functions and Registers

### Note:

The initialization of the register is necessary about the unused function.

### 13.1. Overview of Functions

#### 1) Clock functions

This function is used to set and read out second, minute, hour, day, month, year ( to the last two digits), and date data.

Any (two-digit) year that is a multiple of 4 is treated as a leap year and calculated automatically as such until the year 2099.

At the start of a I<sup>2</sup>C communication, the time and clock counting stops (which causes loss of time), and clock starts automatically again at the end of the I<sup>2</sup>C communication.

#### 2) Wakeup Timer Interrupt function

The wakeup timer interrupt function generates an interrupt event periodically at any wakeup set between 244.14  $\mu$ s and 65535 hours.

When an interrupt event is generated, the /IRQ pin goes to low level and "1" is set to the TF bit to report that an event has occurred.

#### 3) Long-Timer function

It is able to use wakeup timer interrupt function as Long-Timer or usage counter.

This function measures the operation time on the main power supply and the operation time on the backup power supply and can automatically sum them up.

#### 4) Alarm interrupt function

The alarm interrupt function generates interrupt events for alarm settings such as date, day, hour, and minute settings. When an interrupt event occurs, the AF bit value is set to "1" and the /IRQ pin goes to low level to indicate that an event has occurred.

#### 5) Time Update Interrupt Function

The time update interrupt function generates interrupt in one-second or one-minute intervals which are synchronized to the update of the second or minute time register of the RTC. When an interrupt event is generated, the /IRQ pin goes to low level and "1" is set to the UF bit to report that an event has occurred.

#### 6) Frequency stop detection function

This flag bit indicates the retained status of clock operations or internal data. Its value changes from "0" to "1" when data loss might have occurred due to a low supply voltage.

#### 7) Clock output function

A clock with the same frequency (32.768 kHz) as the built-in crystal resonator can be output from the FOUT pin. Output could also be 1 Hz, or 1024 Hz.

#### 8) User RAM

RAM register is read/write accessible for any data.

#### 9) Digital offset function

The clock precision can be increased by adding a time offset.

## 13.2. Register Table

## 13.2.1. Register Table

Table 12 Register Table

Address h	Function	bit 7	bit 6	bit 5	bit 4	bit 3	bit 2	bit 1	bit 0
10	SEC	0	40	20	10	8	4	2	1
11	MIN	0	40	20	10	8	4	2	1
12	HOUR	0	0	20	10	8	4	2	1
13	WEEK	0	6	5	4	3	2	1	0
14	DAY	0	0	20	10	8	4	2	1
15	MONTH	0	0	0	10	8	4	2	1
16	YEAR	80	40	20	10	8	4	2	1
17	MIN Alarm	AE	40	20	10	8	4	2	1
18	HOUR Alarm	AE	•	20	10	8	4	2	1
19	WEEK Alarm	AE	6	5	4	3	2	1	0
	DAY Alarm		•	20	10	8	4	2	1
1A	Timer Counter 0	128	64	32	16	8	4	2	1
1B	Timer Counter 1	32768	16384	8192	4096	2048	1024	512	256
1C	Extension Register	FSEL1	FSEL0	USEL	TE	WADA	TSEL2	TSEL1	TSEL0
1D	Flag Register	VBLF	0	UF	TF	AF	RSF	VLF	VBFF
1E	Control Register0	<b>TEST</b>	STOP	UIE	TIE	AIE	TSTP	TBKON	TBKE
1F	Control Register1	SMP TSEL1	SMP TSEL0	CHG EN	INIEN	0	RS VSEL	BF VSEL1	BF VSEL0

Address h	Function	bit 7	bit 6	bit 5	bit 4	bit 3	bit 2	bit 1	bit 0
20   23	RAM	User Register 32 bits ( 4-word x 8 bit )							

Address h	Function	bit 7	bit 6	bit 5	bit 4	bit 3	bit 2	bit 1	bit 0
30	Digital offset	DTE	L7	L6	L5	L4	L3	L2	L1
31	Extension Register1	-	-	-	-	-	-	-	VBLFE

After the initial power-up (from 0 V) or in case the VLF bit returns "1", make sure to initialize all registers, before using the RTC.

Be sure to avoid entering incorrect date and time data, as clock operations are not guaranteed when the data or time data is incorrect.

The TEST bit is used by the manufacturer for testing. Be sure to set "0" for this bit when writing. \* Be sure to write "0" by initializing before using the clock module. Afterward, be sure to set "0" when writing "0" means that writing is invalid and the read value is always 0.

Any bit marked with "•" is a RAM bit that can be used to read or write any data.

User Register is a free register which can be used as user RAM.

The above table shows only the user registers. Due to functional reasons, RTC has different registers not mentioned above table which are programmed by the manufacturer. Please make sure to only access above mentioned user registers.

"-" bit is TEST bit. As initialization "0" should be set and be kept "0".

## 13.2.2. Register initial value and Read/Write operation Table

After power-on-reset, registers bits of RTC are configured automatically as below.  
The value will be the same even after Software Reset is executed.

- 【 X: Undefined in 0 or 1. usually it keeps data of before Power-On-Reset.】
- 【 0: Reset state    】
- 【 1: Set state      】

**Table 13 Register initial value, Read/Write**

Address h	Function	bit 7	bit 6	bit 5	bit 4	bit 3	bit 2	bit 1	bit 0
10	SEC	0	X	X	X	X	X	X	X
11	MIN	0	X	X	X	X	X	X	X
12	HOUR	0	0	X	X	X	X	X	X
13	WEEK	0	X	X	X	X	X	X	X
14	DAY	0	0	X	X	X	X	X	X
15	MONTH	0	0	0	X	X	X	X	X
16	YEAR	X	X	X	X	X	X	X	X
17	MIN Alarm	X	X	X	X	X	X	X	X
18	HOUR Alarm	X	X	X	X	X	X	X	X
19	WEEK Alarm	X	X	X	X	X	X	X	X
	DAY Alarm		X	X	X	X	X	X	X
1A	Timer Counter 0	X	X	X	X	X	X	X	X
1B	Timer Counter 1	X	X	X	X	X	X	X	X
1C	Extension Register	0	0	0	0	0	1	0	0
1D	Flag Register	0	0	0	0	0	1	1	0
1E	Control Register0	0	0	0	0	0	0	0	0
1F	Control Register1	0	0	0	0	0	0	0	0

Address h	Function	bit 7	bit 6	bit 5	bit 4	bit 3	bit 2	bit 1	bit 0
20-23	RAM	X	X	X	X	X	X	X	X

Address h	Function	bit 7	bit 6	bit 5	bit 4	bit 3	bit 2	bit 1	bit 0
30	Digital offset	0	0	0	0	0	0	0	0
31	Extension Register1	0	0	0	0	0	0	0	0

### 13.3. Description of registers

#### 13.3.1. Clock and calendar registers (0h ~ 16h)

This is counter registers from a second to a year.  
See [\[14.1 Clock calendar explanation\]](#) for details.

#### 13.3.2. RAM registers (20h ~ 23h)

This RAM register is read/write accessible for any data in the range from 00 h to FF h.

#### 13.3.3. Alarm registers (17h ~ 19h)

The alarm interrupt function is used, along with the AE, AF, and WADA bits, to set alarms for specified date, day, hour, and minute values. See [\[14.3. Alarm Interrupt Function \]](#) for the details.

#### 13.3.4. Timer setting and Timer counter register for wakeup timer (1Ah ~ 1Eh)

This register is used to set the default (preset) value for the counter.  
To use the wakeup timer interrupt function ,TE, TF, TIE, TSEL2,TSEL1, TSEL0,TBKON,TBKE bits are set and used. When the wakeup timer interrupt function is not being used, the wakeup timer control register can be used as a RAM register. In such cases, stop the wakeup timer function by writing "0" to the TE and TIE bits. See [\[14.2. Wakeup Timer Interrupt Function \]](#) for the details.

#### 13.3.5. Function-related register 1 (1Ch ~ 1Eh)

##### 1) FSEL1, FSEL0 bit

A combination of the FSEL1 and FSEL0 bits are used to select the frequency to be output.  
The choice is possible by a combining FSEL-bits and CE/FOE-pin, select the frequency of clock output or inhibit the clock output. See [\[14.6. FOUT Function \]](#) for the details.

##### 2) USEL , UF, UIE bit

This bit is used to specify either "second update" or "minute update" as the update generation timing of the time update interrupt function.  
See [\[14.4. Update interrupt function\]](#) for the details.

##### 3) TE, TF, TIE, TSEL2, TSEL1, TSEL0, TSTP,TBKON,TBKE bit

These bits are used to control operation of the wakeup timer interrupt function.

##### 4) WADA, AF, AIE bit

These bits are used to control operation of the alarm interrupt function.

##### 5) TEST\_bit

These bits are the manufacturer's test bit. Always leave this bit value as "0" ..

## 6) VLF bit

This flag bit indicates the retained status of clock operations or internal data. Its value changes from "0" to "1" when data loss occurs, such as due to a supply voltage drop.

See [\[14.5. Frequency stop detection function\]](#) for the details.

## 7) STOP bit

This bit is to stop a timekeeping operation. In the case of "STOP bit = 1":

- 1) All the update of timekeeping and the calendar operation stops.  
With it, an update interrupt event does not occur at an alarm interrupt and the time.
- 2) The part of the wakeup timer interrupt function stops.  
A count stops the source clock setting of the timer in case of "64 Hz, 1 Hz, 1min, 1h".
- 3) Note 3: The effect of STOP bit to FOUT functions.  
When STOP = "1", 32.768 kHz and 1024 Hz output is possible. But 1 Hz output is disabled.
- 4) Switchover function cannot work in order that the V<sub>DD</sub> voltage drop detection stops even if a main power supply falls.

## 8) RSF bit

This flag bit holds the result of detecting the reset voltage.

## 13.3.6. Function-related register 2 (1Fh)

## 1) SMPTSEL1, SMPTSEL0 bit

Operation time setting of a voltage detector circuit for each power supply pin.

See [\[15.1. Description of Battery Backup switchover function\]](#) for the details.

## 2) CHGEN bit

Setting of backup battery charge control (ON/OFF).

## 3) INIEN bit

Setting of a power switchover function (ON/OFF).

## 4) RSVSEL bit

Setting of voltage detection level of a VDD pin.

## 5) BFVSEL1, BFVSEL0 bit

Setting of the full charge detection voltage of a backup battery.

## 13.3.7. Digital offset register (30h)

## 1) DTE bit

Setting of a Digital offset function (ON/OFF).

See [\[17. Digital offset function\]](#) for the details.

## 2) L7 ~ L1 bit

Setting of a Digital offset value.



14. Functions

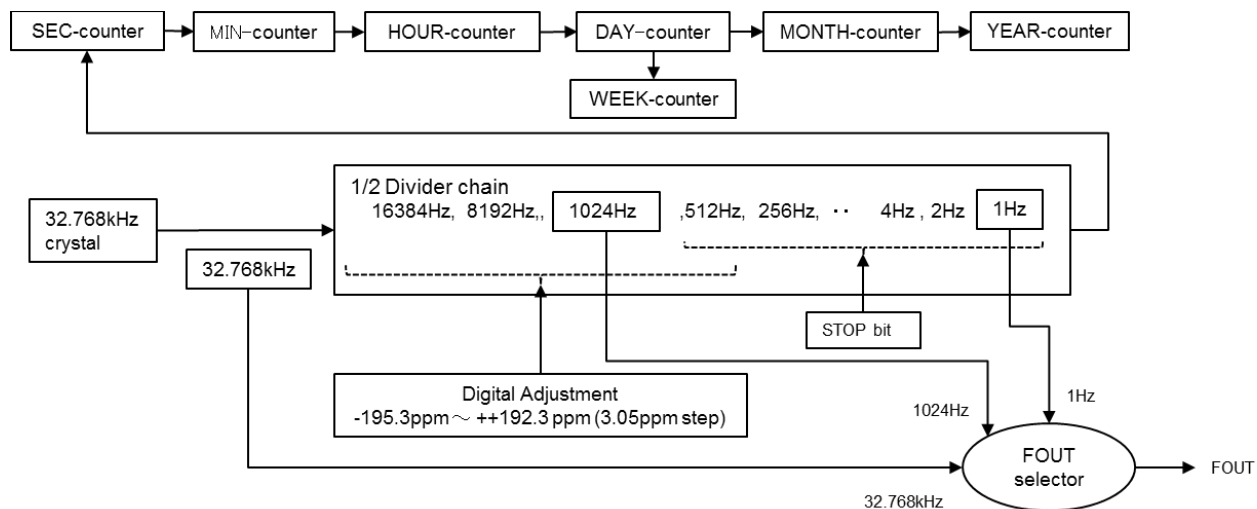


Figure 16 Basic (32.768 k Hz oscillation, counter, FOUT) Function

14.1. Clock calendar explanation

At the time of a communication start, the Clock & Calendar data are fixed (hold the carry operation), and it is automatically revised at the time of the communication end. Therefore, it recommends that the access to a clock calendar has continuous access by the auto increment function.

Table 14 Time, calendar setting example (Sun, 29-Feb-88 17:39:45 (leap year))

Address h	Function	bit 7	bit 6	bit 5	bit 4	bit 3	bit 2	bit 1	bit 0
10	SEC	0	1	0	0	0	1	0	1
11	MIN	0	0	1	1	1	0	0	1
12	HOUR	0	0	0	1	0	1	1	1
13	WEEK	0	0	0	0	0	0	0	1
14	DAY	0	0	1	0	1	0	0	1
15	MONTH	0	0	0	0	0	0	1	0
16	YEAR	1	0	0	0	1	0	0	0

\* Note with caution that writing non-existent time data may interfere with normal operation of the clock counter.

14.1.1. Clock counter

1) [ SEC ] [ MIN ] register

These registers are 60-base BCD counters. These registers are incremented at the timing when carry is generated from a lower register. At the timing when the lower register changes from 59 to 00, carry is generated to the higher register and thus incremented.

When writing is performed to [SEC] register, Internal-count-down-chain less than one second (512 Hz ~ 1 Hz) is cleared to 0.

2) [ HOUR ] register

This register is a 24-base BCD counter (24-hour format). These registers are incremented at the timing when carry is generated from a lower register.

## 14.1.2. Week counter

The day (of the week) is indicated by 7 bits, bit 0 to bit 6.

The day data values are counted as: Day 01h → Day 02h → Day 04h → Day 08h → Day 10h → Day 20h → Day 40h → Day 01h → Day 02h, etc.

It is incremented when carry is generated from the HOUR register. This register does not generate carry to a higher register. Since this register is not connected with the YEAR, MONTH and DAY registers, it needs to be set again with the matching day of the week if any of the YEAR, MONTH or DAY registers have been changed.

**Table 15 Setting example of the week register value.**

Day	bit 7	bit 6	bit 5	bit 4	bit 3	bit 2	bit 1	bit 0	Data h
Sunday	0	0	0	0	0	0	0	1	01 h
Monday	0	0	0	0	0	0	1	0	02 h
Tuesday	0	0	0	0	0	1	0	0	04 h
Wednesday	0	0	0	0	1	0	0	0	08 h
Thursday	0	0	0	1	0	0	0	0	10 h
Friday	0	0	1	0	0	0	0	0	20 h
Saturday	0	1	0	0	0	0	0	0	40 h

\* Do not set "1" to more than one day at the same time.

## 14.1.3. Calendar counter

## 1) [ DAY ], [ MONTH ] register

The DAY register is a variable (between 28-base and 31-base) BCD counter that is influenced by the month and the leap year. The MONTH register is a 12-base BCD counter triggered by carryover of the day register.

		Jan.	Feb.	Mar	Apr.	May	June	July	Aug.	Sep.	Oct.	Nov.	Dec.
Days	Common year	31	28	31	30	31	30	31	31	30	31	30	31
	Leap year		29										

## 2) YEAR ] register

This register is a BCD counter for years 00 to 99.

The leap year is automatically determined and influences the DAY register.

This RTC processes following years as leap years: 00,04,08,12,,, 96.

User software correction is needed in the years 2100,2200,2300 as they are common years.

## &lt; Definition of leap years &gt;

- Leap year : year divisible by 4 , year divisible by 400  
Ex. 2000,2004,2008,2012,,, 2096,2400,2800,,,
- Common year: year indivisible by 4, year divisible by 100  
Ex. 2001,2002,2003,2005,,, 2099,2100,2200,2300,2500,,

## 14.2. Wakeup Timer Interrupt Function

The wakeup timer interrupt function generates an interrupt event periodically at any wakeup set between 244.14  $\mu$ s and 65535 hours. This function can stop at one time and is available as an accumulative timer. After the interrupt occurs, the /IRQ status is automatically cleared .

### 14.2.1. Related registers for function of wakeup timer interrupt function

Address h	Function	bit 7	bit 6	bit 5	bit 4	bit 3	bit 2	bit 1	bit 0
1A	Timer Counter 0	128	64	32	16	8	4	2	1
1B	Timer Counter 1	32768	16384	8192	4096	2048	1024	512	256
1C	Extension Register	FSEL1	FSEL0	USEL	<b>TE</b>	WADA	<b>TSEL2</b>	<b>TSEL1</b>	<b>TSEL0</b>
1D	Flag Register	VBLF	<b>0</b>	UF	<b>TF</b>	AF	RSF	VLF	VBFF
1E	Control Register0	<b>TEST</b>	STOP	UIE	<b>TIE</b>	AIE	<b>TSTP</b>	<b>TBKON</b>	<b>TBKE</b>

- \* Before entering operation settings, we recommend first clearing the TE bit to "0" .
- \* When the wakeup timer function is not being used, the wakeup Timer Counter0,1 register can be used as a RAM register. In such cases, stop the wakeup timer function by writing "0" to the TE and TIE bits.

#### 1) Down counter for wakeup timer ( Timer Counter 1, 0 )

This register is used to set the default (preset) value for the counter. Any count value from 1 (0001 h) to 65535 (FFFFh) can be set.

Be sure to write "0" to the TE bit before writing the preset value.

- \* When TE=0, read out data of timer counter is default (Preset) value. And when TE=1, read out data of timer counter is just counting value. But, when access to timer counter data, counting value is not held. Therefore, for example, perform twice read access to obtain right data, and a way to adopt the case that two data accorded is necessary.

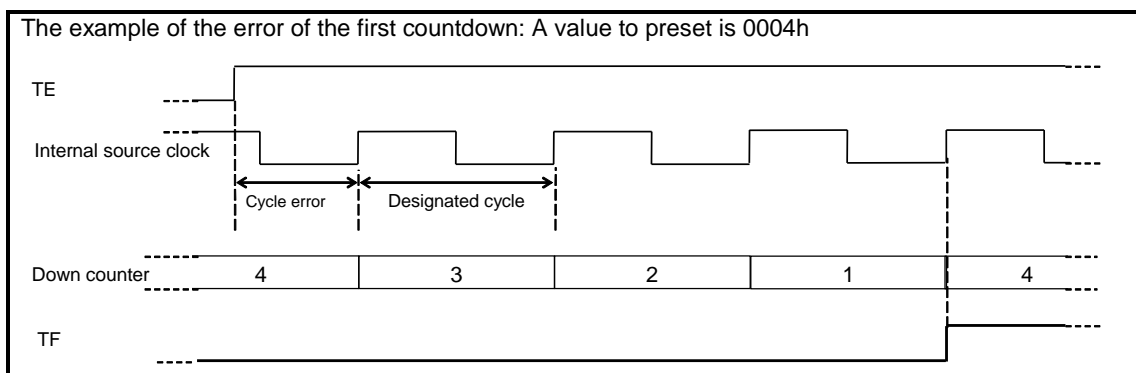
#### 2) TSEL2, TSEL1, TSEL0 bit

The combination of these three bits is used to set the countdown period (source clock) for this function.

**Table 16 Countdown period (source clock) selection**

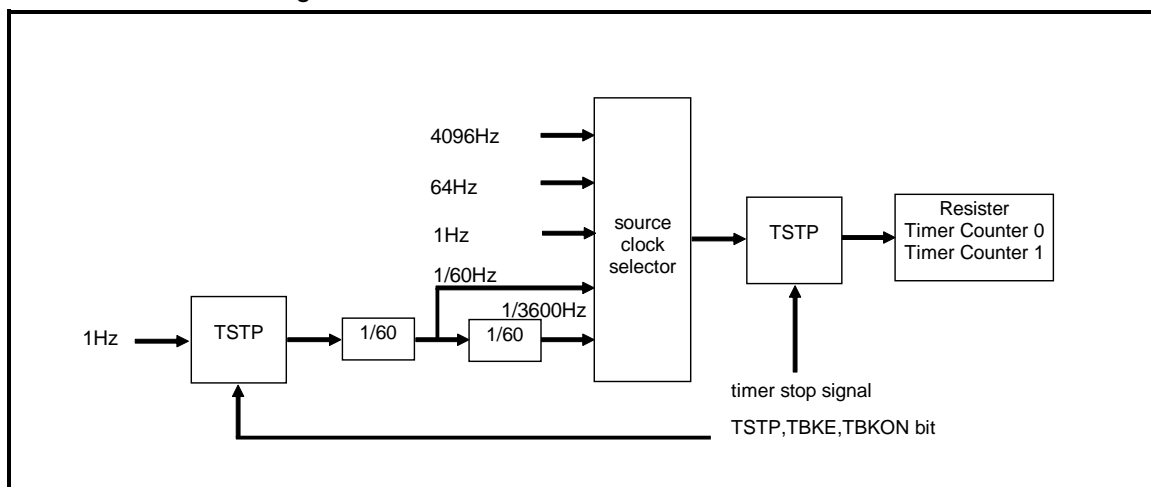
TSEL2 ( bit 2 )	TSEL1 ( bit 1 )	TSEL0 ( bit 0 )	Source clock		Auto reset time tRTN (min)
0	0	0	4096 Hz	/Once per 244.14 $\mu$ s	122 $\mu$ s
0	0	1	64 Hz	/Once per 15.625 ms	7.57 ms
0	1	0	1 Hz	/Once per second	7.57 ms
0	1	1	1/60 Hz	/Once per minute	7.57 ms
1	0	0	1/3600 Hz	/Once per hour	7.57 ms

- \*1) The /IRQ pin's auto reset time (tRTN) varies as shown above according to the source clock setting.
- \*2) The first countdown shortens than a source clock.  
When selected 4,096 Hz / 64 Hz / 1Hz as a source clock, one period of error occurs at the maximum.  
When selected 1/60 Hz / 1/3600 Hz as a source clock, 1 Hz of error occurs at the maximum.



**Figure 17** Wakeup timer initial sequence

Inside counter block diagram



Note: The resolution of the count value depends on the source clock

**Figure 18** Wakeup timer block diagram

3) TE bit ( Timer Enable )

When TE bit is "0", the default (preset) can be checked by reading this register.

**Table 17** Wakeup timer control

TE	Data	Description
Write	0	Stops wakeup timer interrupt function. * Clearing this bit to zero does not enable the /IRQ low output status to be cleared (to Hi-z).
	1	Starts wakeup timer interrupt function. * The countdown that starts when the TE bit value changes from "0" to "1" always begins from the preset value.

4) TF bit ( Timer Flag )

This is a flag bit that retains the result when a wakeup timer interrupt event is detected.

**Table 18 Wakeup timer interrupt detection flag**

TF	Data	Description
Write	0	The TF bit is cleared to zero to prepare for the next status detection * Clearing this bit to zero does not enable the /IRQ low output status to be cleared (to Hi-z).
	1	Invalid (writing a 1 will be ignored)
Read	0	-
	1	Wakeup timer interrupt events are detected. (Result is retained until this bit is cleared to zero.)

## 5) TIE bit ( Timer Interrupt Enable )

This bit is used to control output of interrupt signals from the /IRQ pin when a wakeup timer interrupt event has occurred.

**Table 19 Wakeup timer interrupt control**

TIE	Data	Description
Write	0	1) When a wakeup timer interrupt event occurs, an interrupt signal is not generated. 2) When a wakeup timer interrupt event occurs, the interrupt signal is canceled (/IRQ status changes from low to Hi-z).
	1	When a wakeup timer interrupt event occurs, an interrupt signal is generated (/IRQ status changes from Hi-z to low).

## 6) TBKON, TBKE bit

This function selects the operation time with the main power supply or the operation time with the backup power supply. The count value is added.

**Table 20 Wakeup timer normal mode/backup mode control**

operation	TBKE	TBKON	Description
Write	0	X	This setting counts normal mode and backup mode.
	1	0	This setting counts it at time of normal mode(VDD operation)
		1	This setting counts it at time of backup mode (VBAT operation)

## 7) TSTP bit ( Timer Stop )

This bit is used to stop wakeup timer count down.

**Table 21 Wakeup timer stop control**

TE	STOP	TBKE	TSTP	Description
1	0	0	0	Writing a "0" to this bit cancels stop status (restarts timer count down). *The reopening value of the countdown is a stopping value
			1	Count stops.
	1	1	X	X
1		X	X	The count stops at the time of the setting of 64 Hz, 1 Hz, 1/60 Hz, 1/3600 Hz.
0	X	X	X	It doesn't start counting

14.2.2. Wakeup timer start timing

Counting down of the wakeup timer value starts at the rising edge of the SCL (ACK output) signal that occurs when the TE value is changed from "0" to "1".

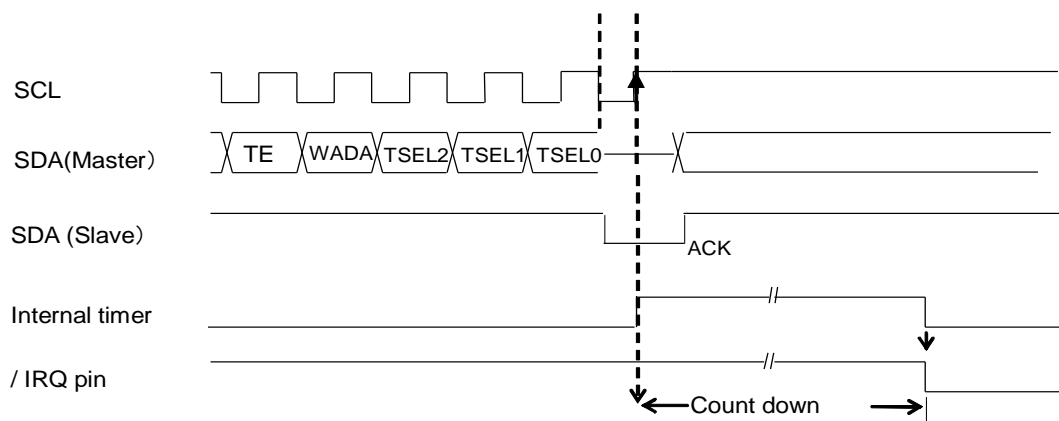


Figure 19 Wakeup timer start sequence

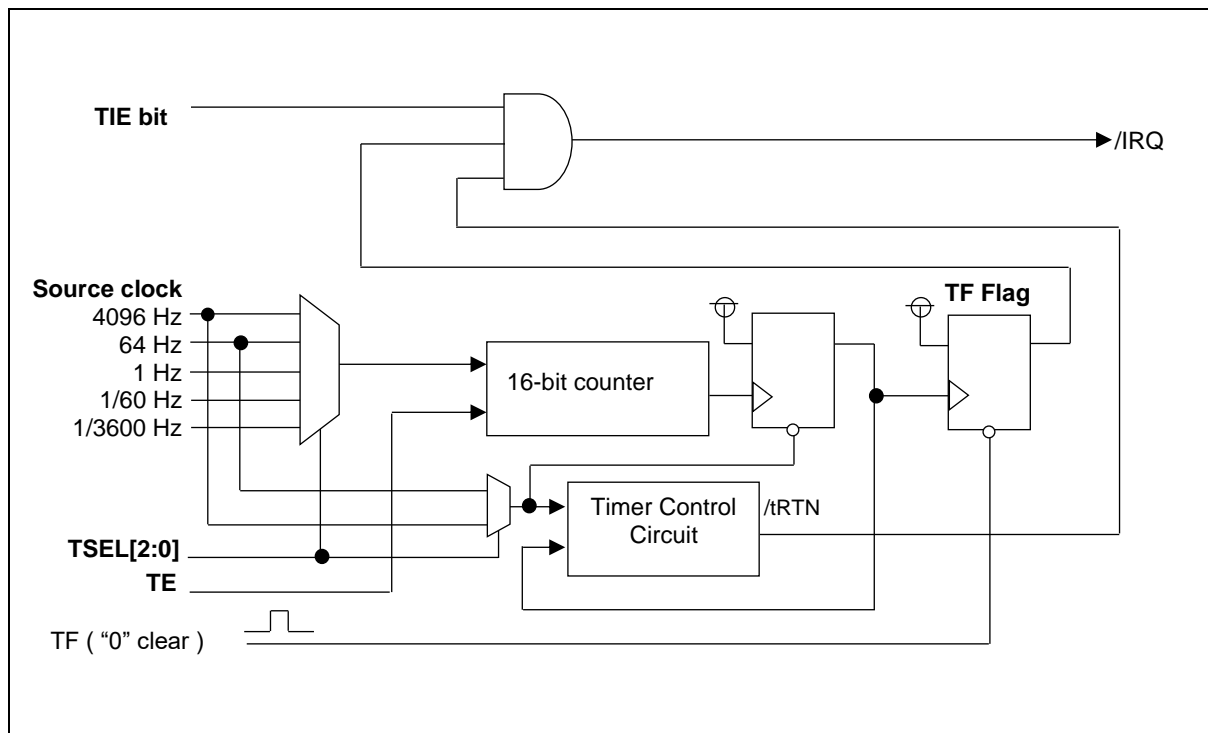
14.2.3. Wakeup timer interrupt interval (example)

The combination of the source clock settings and wakeup timer countdown setting sets interrupt interval, as shown in the following examples.

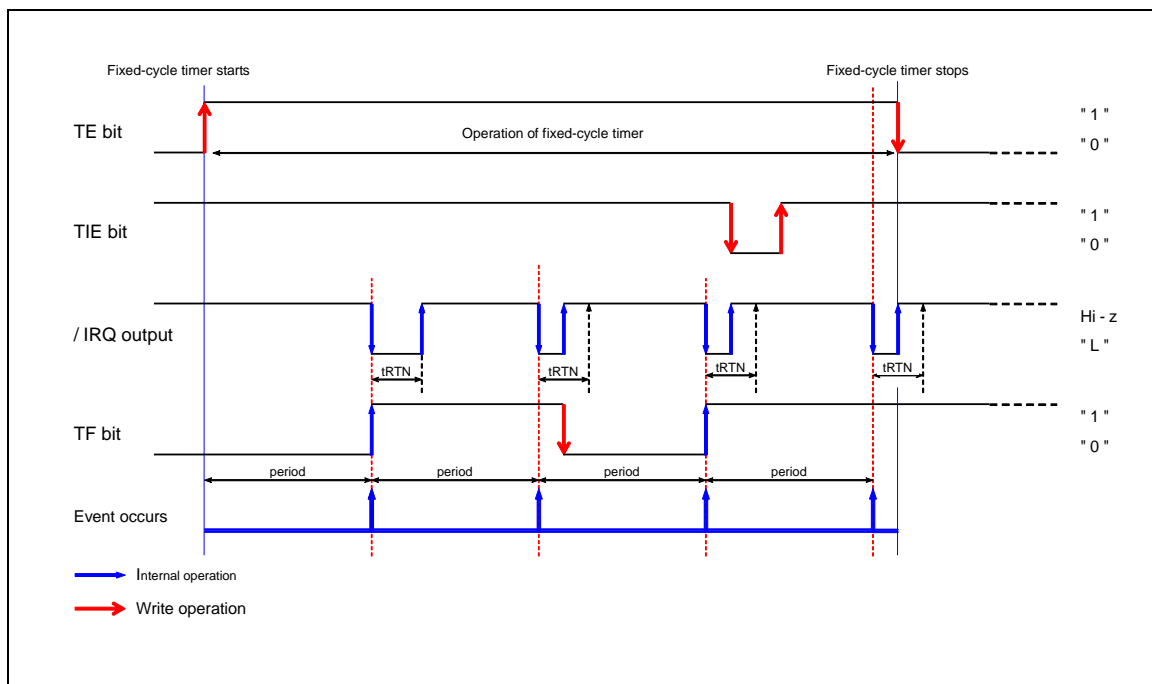
**Table 22 Wakeup timer interrupt cycles**

Timer Counter setting 1 ~ 65535	Source clock				
	4096 Hz TSEL2 = 0 TSEL1, 0 = 0, 0	64 Hz TSEL2 = 0 TSEL1, 0 = 0, 1	1 Hz TSEL2 = 0 TSEL1, 0 = 1, 0	1 / 60 Hz TSEL2 = 0 TSEL1, 0 = 1, 1	1 / 3600 Hz TSEL2 = 1 TSEL1, 0 = 0, 0
0	–	–	–	–	–
1	244.14 $\mu$ s	15.625 ms	1 s	1 min	1 h
:	:	:	:	:	:
410	100.10 ms	6.406 s	410 s	410 min	410 h
:	:	:	:	:	:
3840	0.9375 s	60.000 s	3840 s	3840 min	3840 h
:	:	:	:	:	:
4096	1.0000 s	64.000 s	4096 s	4096 min	4096 h
:	:	:	:	:	:
65535	15.9998 s	1023.984 s	65535 s	65535 min	65535 h

14.2.4. Diagram of wakeup timer interrupt function



**Figure 20 Wakeup timer inner block diagram**



**Figure 21 Wakeup timer timing chart**

- (1) A time update interrupt event occurs when the internal clock's value matches either the second update time or the minute update time. The USEL bit's specification determines whether it is the second update time or the minute update time that must be matched.
- (2) When a time update interrupt event occurs, the UF bit value becomes "1".
- (3) When the UF bit value is "1" its value is retained until it is cleared to zero.
- (4) When a time update interrupt occurs, /IRQ pin output is low if UIE = "1".  
\* If UIE = "0" when a timer update interrupt occurs, the /IRQ pin status remains Hi-Z.
- (5) Each time an event occurs, /IRQ pin output is low only up to the tRTN time (which is fixed as min 7.57 ms for time update interrupts) after which it is automatically cleared to Hi-Z.  
\* /IRQ pin output goes low again when the next interrupt event occurs.
- (6) As long as /IRQ = low, the /IRQ pin status does not change, even if the UF bit value changes from "1" to "0".
- (7) When /IRQ = low, the /IRQ pin status changes from low to Hi-Z as soon as the UIE bit value changes from "1" to "0".



### 14.3. Alarm Interrupt Function

The alarm interrupt function generates interrupt events for alarm settings such as date, day, hour, and minute settings.

When an interrupt event occurs, the AF bit value is set to "1" and the /IRQ pin goes to low level to indicate that an event has occurred. AF bit and /IRQ output show a maximum delay of 1.46ms from the alarm event.

\* /IRQ="L" output when occurs alarm interruption event is not cancelled automatically unless giving intentional cancellation and /IRQ="L" are maintained.

#### 14.3.1. Related registers for Alarm interrupt functions.

Address h	Function	bit 7	bit 6	bit 5	bit 4	bit 3	bit 2	bit 1	bit 0
17	MIN Alarm	<b>AE</b>	40	20	10	8	4	2	1
18	HOUR Alarm	<b>AE</b>	•	20	10	8	4	2	1
19	WEEK Alarm	<b>AE</b>	6	5	4	3	2	1	0
	DAY Alarm		•	20	10	8	4	2	1
1C	Extension Register	FSEL1	FSEL0	USEL	TE	<b>WADA</b>	TSEL2	TSEL1	TSEL0
1D	Flag Register	VBLF	<b>0</b>	UF	TF	<b>AF</b>	RSF	VLF	VBFF
1E	Control Register0	<b><u>TEST</u></b>	STOP	UIE	TIE	<b>AIE</b>	TSTP	TBKON	TBKE

\* Before entering settings for operations, we recommend writing a "0" to the AIE bit to prevent hardware interrupts from occurring inadvertently while entering settings.

\* When the STOP bit value is "1" alarm interrupt events do not occur.

\* When the alarm interrupt function is not being used, the Alarm registers (Reg – 17h to 19h) can be used as a RAM register. In such cases, be sure to write "0" to the AIE bit.

\* When the AIE bit value is "1" and the Alarm registers (Reg – 17h to 19h) is being used as a RAM register, /IRQ may be changed to low level unintentionally.

#### 1) AE bit

The minute, hour, day and date when an alarm interrupt event will occur is set using this register and the WADA bit.

In the WEEK alarm /Day alarm register (Reg – 19h), the setting selected via the WADA bit determines whether WEEK alarm data or DAY alarm data will be set. If WEEK has been selected via the WADA bit, multiple days can be set (such as Monday, Wednesday, Friday, Saturday).

When the settings made in the alarm registers and the WADA bit match the current time, the AF bit value is changed to "1". At that time, if the AIE bit value has already been set to "1", the /IRQ pin goes low.

Note: AE-bit is low active, so in order to enable 1 interrupt every hour once the actual minutes match the alarm setting, it is necessary to set the AE of register 17h to 0 and the AE of 18h and 19h to 1.

In order to generate an alarm interrupt only once a week, all 3 AE-bits have to be set "0"

\*1) The alarm function is not a HW feature but software function inside the RTC.

\*2) In case "AE" bit of register 19h is set to "1", the day will be ignored, and an interrupt occurs ones the actual time matches the minutes and/or hour setting of the alarm register.

(Example) Write 80h (AE = "1") to the WEEK Alarm /DAY Alarm register (Reg - 19h):

Only the hour and minute settings are used as alarm comparison targets. The week and date settings are not used as alarm comparison targets.

As a result, alarm occurs if only the hour and minute values match the alarm data.

\*3) If all three AE bit values are "1" the week/date and time settings are ignored, and an alarm interrupt event will occur once per minute.

#### 2) WADA bit ( Week Alarm / Day Alarm Select )

The alarm interrupt function uses either "Day" or "Week" as its target. The WADA bit is used to specify either WEEK or DAY as the target for alarm interrupt events.

**Table 23 WEEK/DAY control**

WADA	Data	Description
Write	0	Sets WEEK as target of alarm function
	1	Sets DAY as target of alarm function

## 3) AF bit ( Alarm Flag )

When this flag bit value is already set to "0", occurrence of an alarm interrupt event changes it to "1".

When this flag bit value is "1", its value is retained until a "0" is written to it.

**Table 24 Alarm Flag**

AF	Data	Description
Write	0	Clearing this bit to zero enables /IRQ low output to be canceled (/IRQ remains Hi-z) when an alarm interrupt event has occurred.
	1	Invalid (writing a 1 will be ignored)!
Read	0	-
	1	Alarm interrupt events are detected. (Result is retained until this bit is cleared to zero.)

## 4) AIE bit ( Alarm Interrupt Enable )

This bit is used to control output of interrupt signals from the /IRQ pin when an Alarm interrupt event has occurred.

**Table 25 Alarm Interrupt control**

AIE	Data	Description
Write	0	1) When an alarm interrupt event occurs, an interrupt signal is not generated or is canceled (/IRQ status remains Hi-z). 2) When an alarm interrupt event occurs, the interrupt signal is canceled (/IRQ status changes from low to Hi-z).
	1	When an alarm interrupt event occurs, an interrupt signal is generated (/IRQ status changes from Hi-z to low).

The AIE bit is only output control of the /IRQ terminal. It is necessary to clear an AF flag to cancel alarm.

## 14.3.2. Examples of alarm settings

- 1) Example of alarm settings when "Week" has been specified (and WADA bit = "0")

**Table 26 WEEK alarm example**

Week is specified WADA bit = "0"	Week Alarm								HOUR Alarm	MIN Alarm
	bit 7	bit 6	bit 5	bit 4	bit 3	bit 2	bit 1	bit 0		
	AE	S	F	T	W	T	M	S		
Monday through Friday, at 7:00 AM * Minute value is ignored	0	0	1	1	1	1	1	0	07 h	AE bit = 1
Every Saturday and Sunday, for 30 minutes each hour * Hour value is ignored	0	1	0	0	0	0	0	1	AE bit = 1	30 h
Every day, at 6:59 AM	0	1	1	1	1	1	1	1	18 h	59 h
	1	X	X	X	X	X	X	X		

X: Don't care

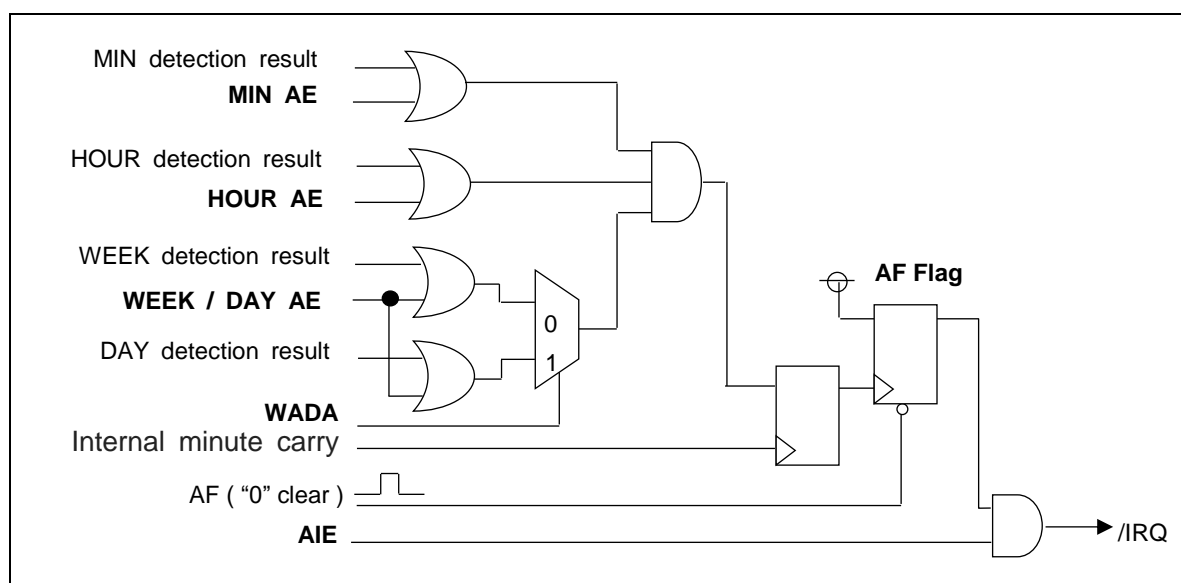
2) Example of alarm settings when "Day" has been specified (and WADA bit = "1")

**Table 27 DAY alarm example**

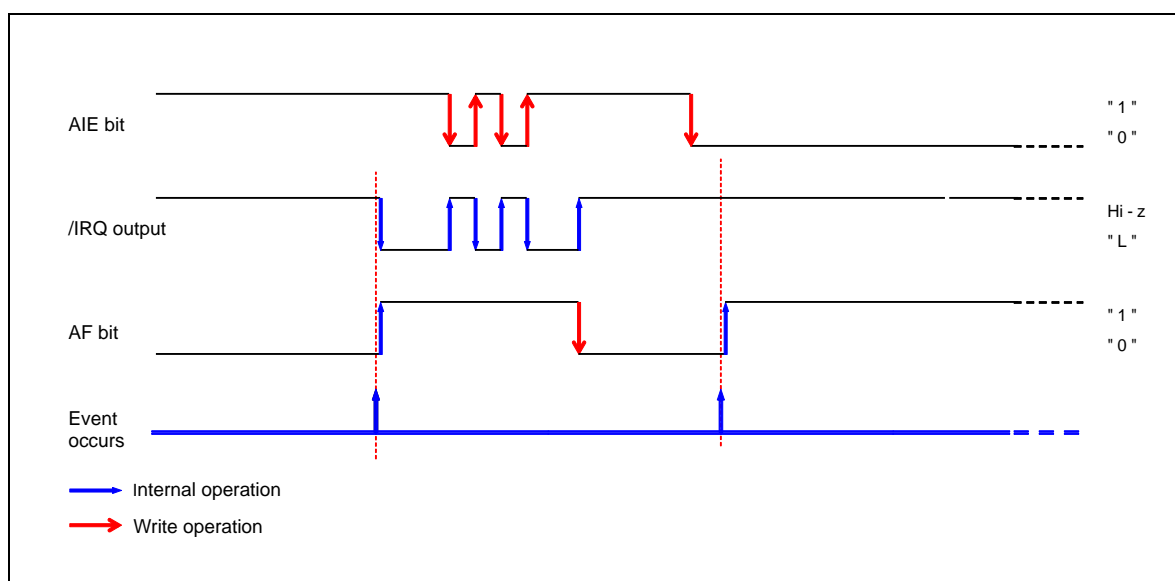
Day is specified WADA bit = "1"	Day Alarm								HOUR Alarm	IN Alarm
	bit 7 AE	bit 6 •	bit 5 20	bit 4 10	bit 3 08	bit 2 04	bit 1 02	bit 0 01		
First of each month, at 7:00 AM * Minute value is ignored	0	0	0	0	0	0	0	1	07 h	AE bit = 1
15 <sup>th</sup> of each month, for 30 minutes each hour * Hour value is ignored	0	0	0	1	0	1	0	1	AE bit = 1	30 h
Every day, at 6:59 PM	1	X	X	X	X	X	X	X	18 h	59 h

X: Don't care

14.3.3. Diagram of alarm interrupt function



**Figure 22 Alarm interrupt inner block diagram**



**Figure 23 Alarm Interrupt time chart**

### 14.4. Time Update Interrupt Function

The time update interrupt function generates interrupt in one-second or one-minute intervals which are synchronized to the update of the second or minute time register of the RTC. When an interrupt event is generated, this /IRQ status is automatically cleared (/IRQ status changes from low level to Hi-z earliest 7.57ms (maximum 15.63ms) after the interrupt occurs).

#### 14.4.1. Related registers for time update interrupt functions.

Address h	Function	bit 7	bit 6	bit 5	bit 4	bit 3	bit 2	bit 1	bit 0
1C	Extension Register	FSEL1	FSEL0	<b>USEL</b>	TE	WADA	TSEL2	TSEL1	TSEL0
1D	Flag Register	VBLF	<b>0</b>	<b>UF</b>	TF	AF	RSF	VLF	VBFF
1E	Control Register0	<b>TEST</b>	STOP	<b>UIE</b>	TIE	AIE	TSTP	TBKON	TBKE

- \* Before entering settings for operations, we recommend writing a "0" to the UIE bit to prevent hardware interrupts from occurring inadvertently while entering settings.
- \* When the STOP bit value is "1" time update interrupt events do not occur.
- \* Although the time update interrupt function cannot be fully stopped, if "0" is written to the UIE bit, the time update interrupt function can be prevented from changing the /IRQ pin status to low.

#### 1) USEL bit ( Update Interrupt Select )

This bit is used to select "second" update or "minute" update as the timing for generation of time update interrupt events.

**Table 28 Second/Minute selection**

USEL	Data	Description
Write	0	Selects "second update" (once per second) as the timing for generation of interrupt events
	1	Selects "minute update" (once per minute) as the timing for generation of interrupt events

2) UF bit ( Update Flag ) This flag bit value changes from "0" to "1" when a time update interrupt event occurs.

**Table 29 Time update Flag**

UF	Data	Description
Write	0	Clearing this bit to zero enables /IRQ low output to be canceled (/IRQ remains Hi-z) when a time update interrupt event has occurred.
	1	Invalid (writing a 1 will be ignored)
Read	0	-
	1	Time update interrupt events are detected. (The result is retained until this bit is cleared to zero.)

#### 3) UIE bit ( Update Interrupt Enable )

This bit selects whether to generate an interrupt signal or to not generate it.

**Table 30 Time update interrupt control**

UIE	Data	Description
Write / Read	0	1) Does not generate an interrupt signal when a time update interrupt event occurs (/IRQ remains Hi-Z) 2) Cancels interrupt signal triggered by time update interrupt event (/IRQ changes from low to Hi-Z). * Even when the UIE bit value is "0" another interrupt event may change the /IRQ status to low (or may hold /IRQ = "L").
	1	When a time update interrupt event occurs, an interrupt signal is generated (/IRQ status changes from Hi-Z to low). * When a time update interrupt event occurs, low-level output from the /IRQ pin occurs only when the UIE bit value is "1". Earliest 7.57 ms after the interrupt occurs, the /IRQ status is automatically cleared (/IRQ status changes from low to Hi-Z).

14.4.2. Time update interrupt function diagram

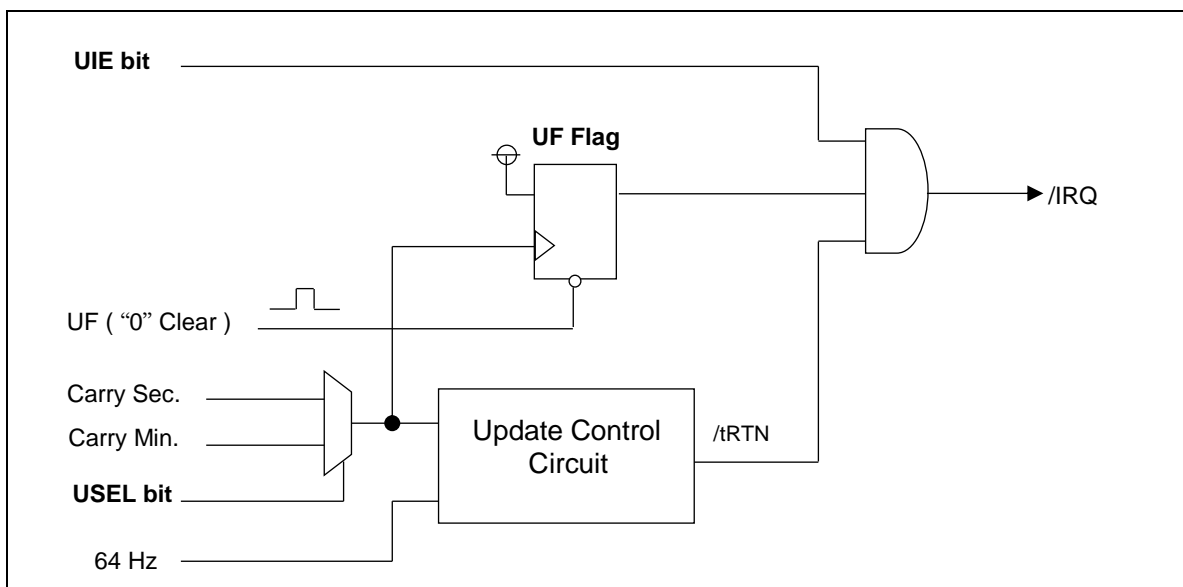


Figure 24 Time update inner block diagram

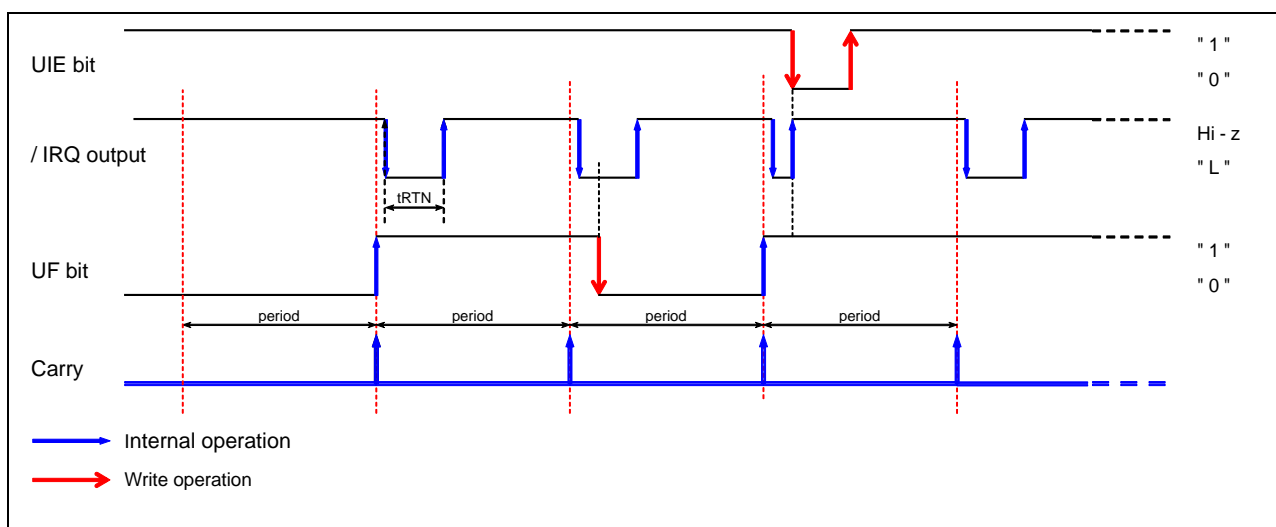


Figure 25 Time update time chart

### 14.5. Oscillation stop detection function

This flag bit indicates the retained status of clock oscillation stop. Its value changes from "0" to "1" when data loss might have occurred due to clock oscillation stop, power on resetting. Once this flag bit's value is "1", its value is retained until a "0" is written to it.

During the initial power-on (from 0 V) and/or if the value of the VLF bit is "1", be sure to initialize all registers before using them.

#### 14.5.1. Related registers for Oscillation stop and Voltage low detect function.

Address h	Function	bit 7	bit 6	bit 5	bit 4	bit 3	bit 2	bit 1	bit 0
1D	Flag Register	VBLF	0	UF	TF	AF	RSF	VLF	VBFF

1) VLF bit

**Table 31 Oscillation stop detection flag**

VLF	Data	Description
Write	0	The VLF is cleared to 0 and waiting for next low voltage detection.
	1	Invalid (writing 1 will be ignored)
Read	0	Oscillation status is normal, RTC register data are valid.
	1	Oscillation stop is detected, RTC register data are invalid. Should be initialized of all register data. VLF is maintained till it is cleared by zero.

### 14.6. FOUT function

The clock signal can be output via the FOUT pin. Output is stopped upon detection of the voltage drop below  $V_{DET1}$  In this case pin output becomes Hi-z.

#### 14.6.1. FOUT control register.

Address h	Function	bit 7	bit 6	bit 5	bit 4	bit 3	bit 2	bit 1	bit 0
1C	Extension Register	FSEL1	FSEL0	USEL	TE	WADA	TSEL2	TSEL1	TSEL0

#### 14.6.2. FOUT function Table.

3) FSEL1,FSEL0 bit

**Table 32 FOUT Frequency selection**

FSEL1	FSEL0	output
0	0	32.768 kHz Output
0	1	1024 Hz Output
1	0	1 Hz Output
1	1	OFF

At the time of the initial power-on, "0" is set to FSEL1, FSEL0 by Power-On-Reset..

Note: The effect of STOP bit to FOUT functions.

When STOP = "1", 32.768 kHz and 1024 Hz output is possible.  
But 1 Hz output is disabled.

## 15 Battery backup switchover function

### 15.1. Description of Battery backup switchover function

This function consists of a supply voltage detector "V<sub>DET</sub>" which detects if the supply voltage of the main power source connected to "V<sub>DD</sub>" drops below a threshold (V<sub>DET2</sub>), and three MOS switches (SW1, SW2A and SW2B) located between the main power-source pin "V<sub>DD</sub>" and the backup power supply pin "V<sub>BAT</sub>". (Figure 26 Battery backup switchover block diagram)

The MOS-switches SW1, SW2A and SW2B are activated according to the result of the supply-voltage detection of V<sub>DET2</sub> and the RTC changes the operating modes between normal mode (RTC power supply = V<sub>DD</sub>) or backup mode (RTC power supply = V<sub>BAT</sub>).

The RTCs backup function is built in a way to prevent reverse current flow from V<sub>BAT</sub> to V<sub>DD</sub>. While in backup-mode, the I2C-bus and FOUT function are switched off and related terminals switched to Hi-Z.

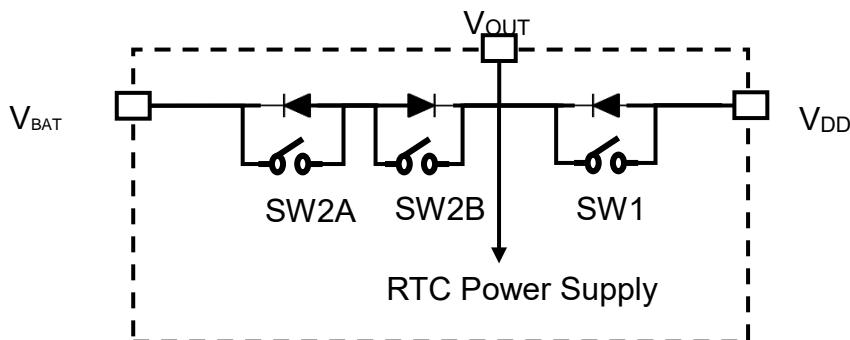


Figure 26 Battery backup switchover block diagram

### 15.2 Reference characteristics of switching elements.

Table 33 Reference characteristics of switching elements.

Item	Value	Condition
Limit of current.	40 mA Max.	SW1 = SW2A = SW2B = ON, +25 °C
Diode Vf	0.60 V / 1 mA Typ. 0.85 V / 10 mA Typ.	V <sub>DD</sub> = 3.0 V, +25 °C
Diode IR	5 nA Max.	V <sub>R</sub> = 5.5 V, -40 °C ~ +85 °C

Use a secondary battery, EDLC, etc, with the charge current of 40 mA or less.

### 15.3 Reference characteristics of the charge current

Graph show an electric current characteristic (all SW1, SW2B, SW2A, resistance characteristic of ON) that can charge a second battery.

It is reference value in 25 °C.

When  $V_{DD}$  voltage is high, The charge current increase.

And when little voltage differences of  $V_{DD}$  and  $V_{BAT}$ , charge current is decreasing.

A vertical axis shows charge current  $I_{chg}$  and a horizontal axis shows voltage difference  $V_{def}$  between  $V_{DD}$  and  $V_{BAT}$ .

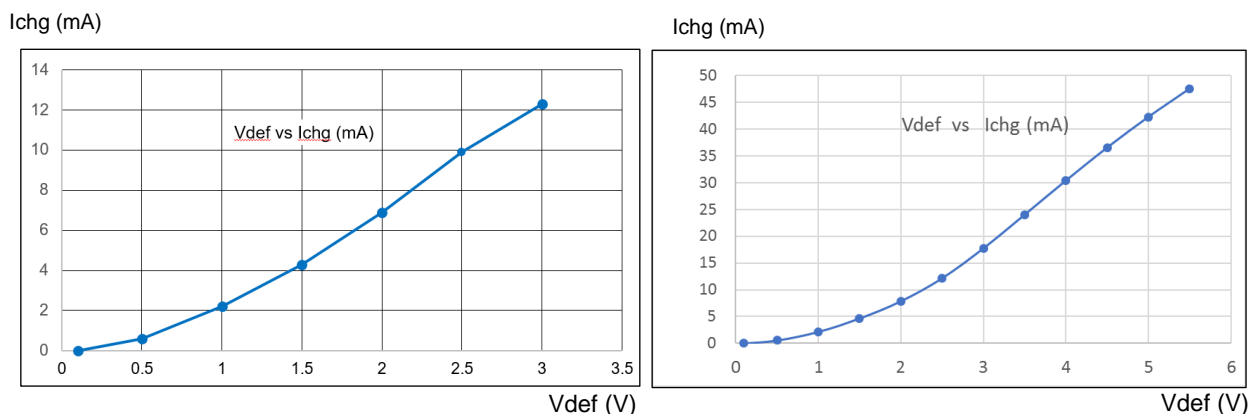


Figure 27  $V_{BAT}$  charge current characteristics  $V_{DD} = 3.0 V, 5.5 V$

### 15.4 Re-Chargeable battery Voltage Current features

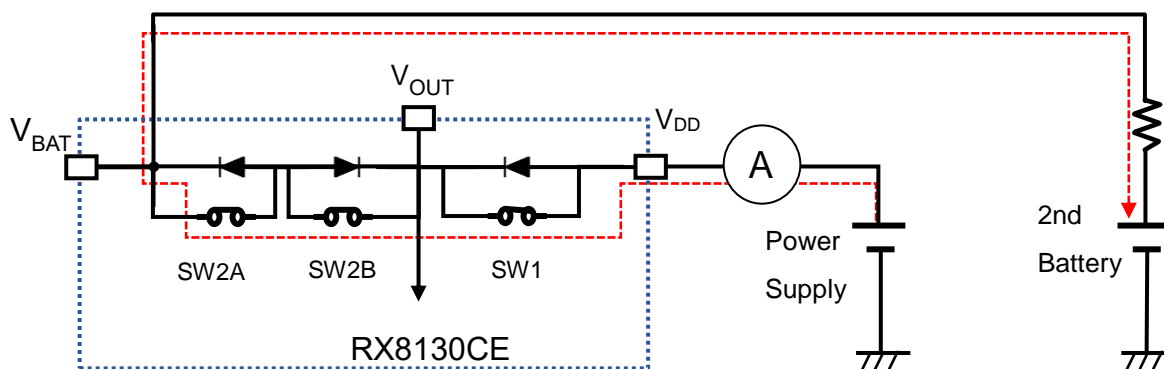


Figure 28 Re-chargeable battery connection



15.5. Related register of Battery backup switchover function

Address h	Function	bit 7	bit 6	bit 5	bit 4	bit 3	bit 2	bit 1	bit 0
1D	Flag Register	VBLF	0	UF	TF	AF	RSF	VLF	VBFF
1F	Control Register1	SMP TSEL1	SMP TSEL0	CHG EN	INIEN	0	RS VSEL	BF VSEL1	BF VSEL0

1) CHGEN bit

This bit has to be set to allow charging of a Re-chargeable battery connected to V<sub>BAT</sub> from V<sub>DD</sub> pin.

**Table 34 CHGEN bit**

CHGEN	Data	Description
Write / Read	0	For non-re-chargeable battery use (default setting). During V <sub>DD</sub> drive SW2 is OFF, battery charging is not available.
	1	SW1, SW2 automatic controlled. For re-chargeable battery use

In case of re-chargeable battery use, INIEN should be set to 1 to enable SW1, SW2 automatic control. To stop battery charging CHGEN should be reset to 0.

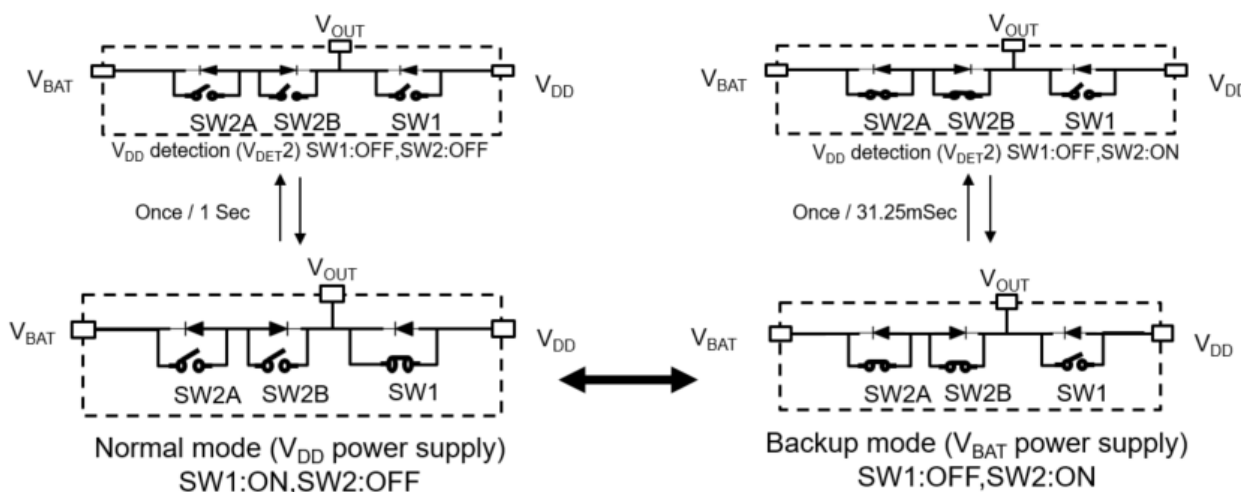
2) INIEN bit

**Note1:** When INIEN is used with 0, it must be set up "INIEN=1" before the setting once at least. When INIEN-bit is used with 0 from just Power-On-Reset value all the time, there is the case that INIEN=0 mode is incorrect working. For example, Power switching doesn't work. Therefore, that an INIEN bit is set to 1 in initial setting is recommended. See "[initial setting example](#)".

**Note2:** when INIEN set to 1 from 0 in V<sub>DD</sub><V<sub>DET1</sub>, I<sup>2</sup>C is disabled immediately. Therefore while V<sub>DD</sub><V<sub>DET1</sub>, I<sup>2</sup>C can't cleared INIEN to 0.

**Table 35 INIEN bit**

INIEN	Data	Description
Write / Read	0	After INIEN=1, I <sup>2</sup> C and FOUT function is available regardless of V <sub>DET1</sub> detection. Power-switching is available. CHGEN-bit function is disabled. It same as CHGEN = 0. be careful not to input intermediate voltage to the I <sup>2</sup> C interface.
	1	I <sup>2</sup> C, FOUT function is not available while V <sub>DD</sub> < V <sub>DET1</sub> . I <sup>2</sup> C, FOUT function is available while V <sub>DD</sub> > V <sub>DET1</sub> . CHGEN bit function is enabled.



**Figure 30 Non Re-chargeable battery SW1, SW2 control (INIEN = 1, CHGEN = 0)**

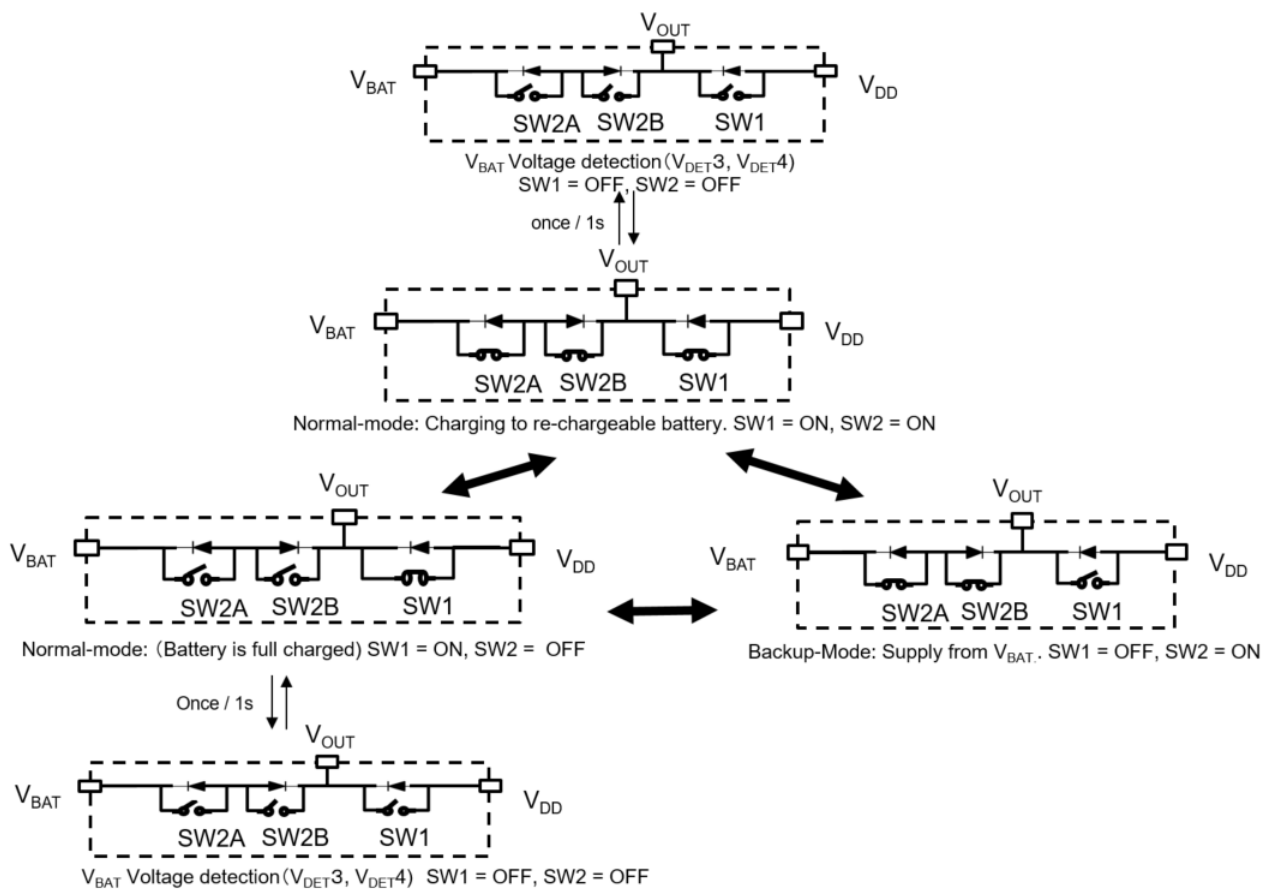


Figure 31 Re-chargeable battery SW1, SW2 control (INIEN = 1, CHGEN = 1)

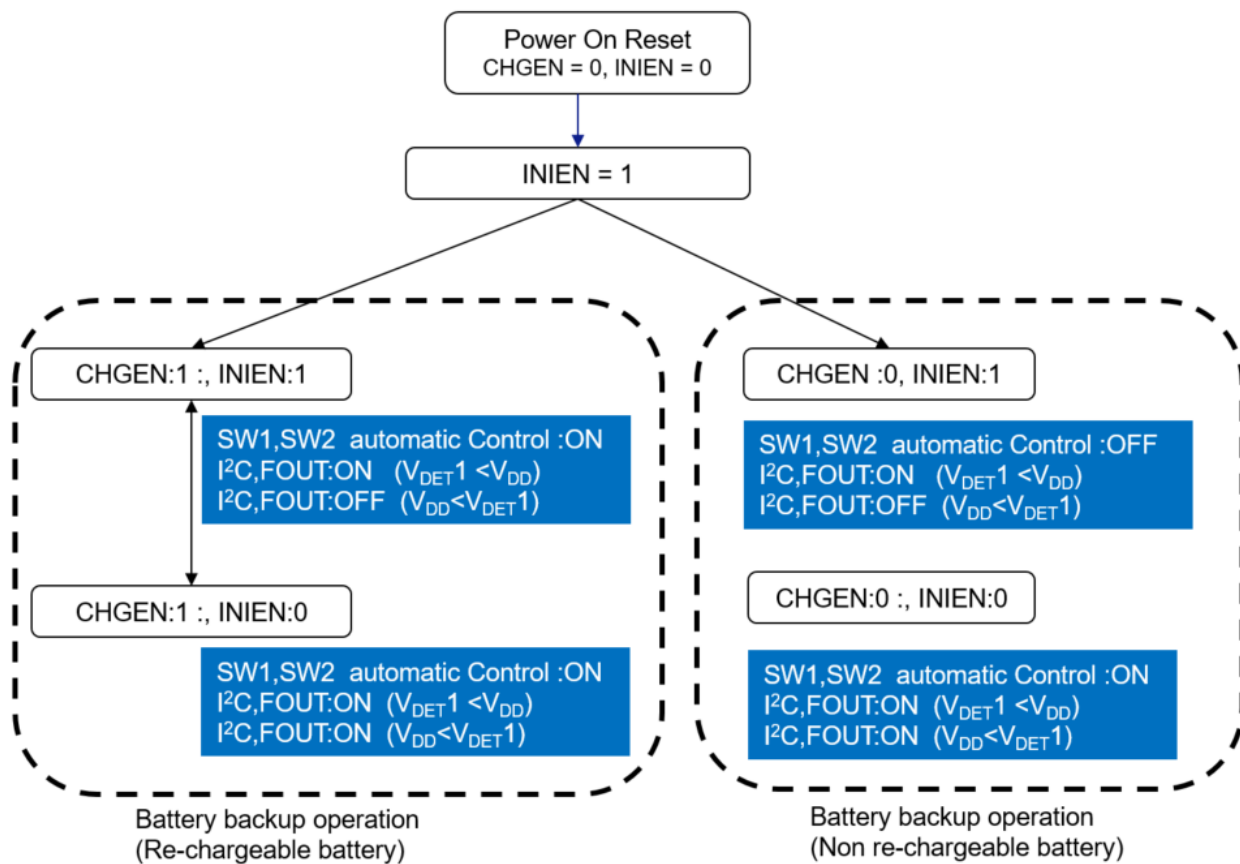


Figure 32 Battery backup (SW1, SW2 automatic control)

## 3) SMPTSEL1, SMPTSEL0 bit

- $V_{DD}$  voltage detection:  $V_{DET1}$  (reset),  $V_{DET2}$  (voltage down):  
 Battery backup detection ( $V_{DET2}$ ) is done constantly and SW1 is opened periodically for  $V_{DD}$  measurement.  
 During SW1:ON, external voltage to  $V_{DD}$  cannot be measured precisely because RTC internal voltage is leaked to  $V_{DD}$  external voltage supply circuit even external circuit is down. So periodical SW1 = OFF makes disconnection between RTC internal voltage and external voltage supply, thus  $V_{DD}$  external voltage is measured precisely.  $V_{DD}$  external voltage drop moves to backup mode.  
 See [Figure 30  \$V\_{DD}\$  detection \( \$V\_{DET2}\$ \) timing](#).
- $V_{BAT}$  voltage detection:  $V_{DET3}$  ( $V_{BAT}$  full charge),  $V_{DET4}$  ( $V_{BAT}$  over discharge)  
 In case of normal mode,  $V_{BAT}$  voltage is precisely and periodically detected with condition (SW1 OFF, SW2 OFF). The detection period is determined by combination of SMPTSEL1, SMPTSEL0.  
 See [Figure 31 for  \$V\_{DET3}\$ ,  \$V\_{DET4}\$  voltage detection timing](#)

(In case of CHGEN = 0, There is no charge operation SW2 = OFF)

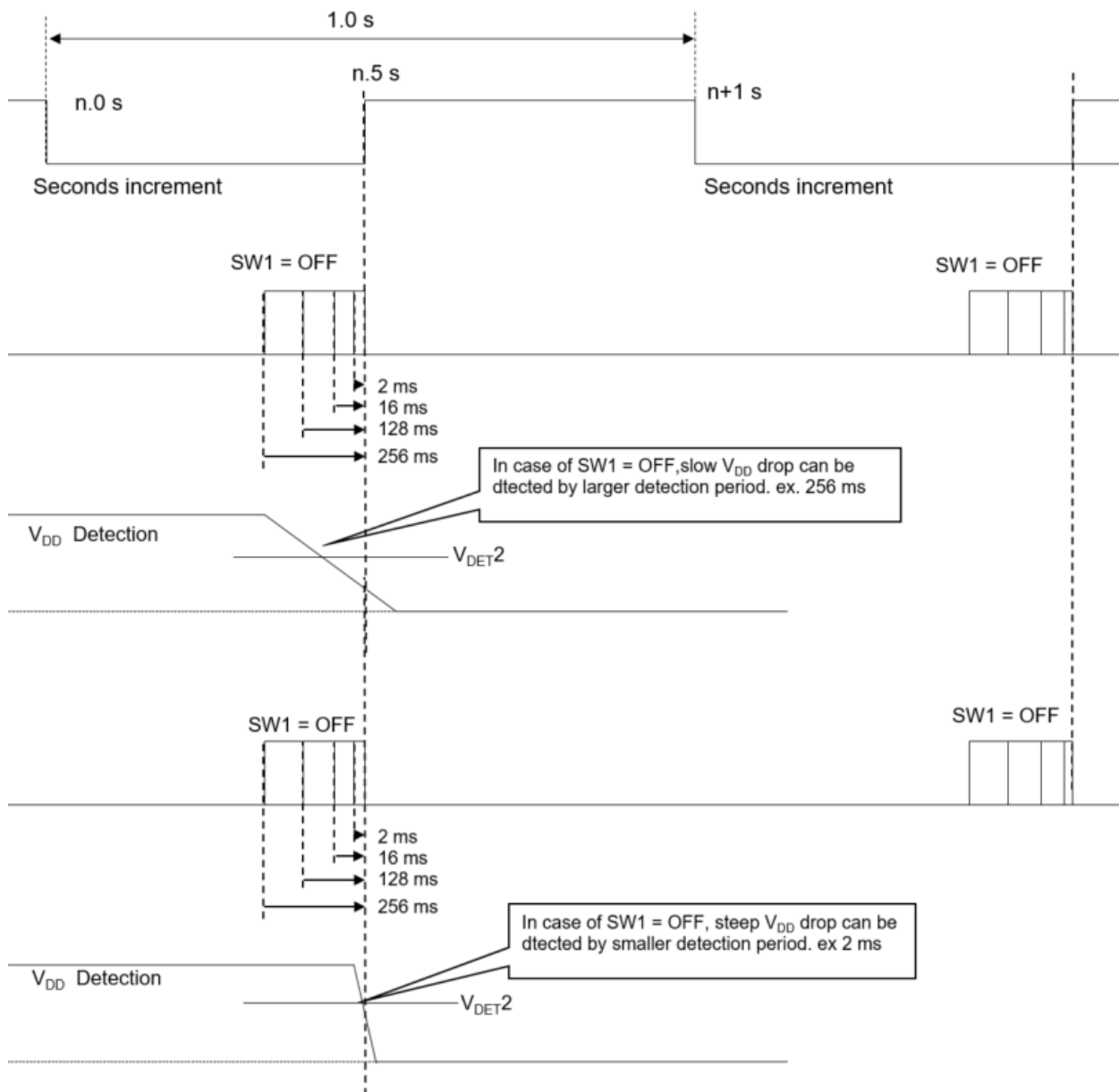
**Table 36 Voltage detection timing**

Power supply mode	Normal mode (Backup battery is charging)	Normal mode (Backup battery is fully charged)	Normal mode (After return from backup $V_{DET1} > V_{DD} > V_{DET2}$ )	Backup mode
Reset detection $V_{DD} < V_{DET1}$	Constantly ON	Constantly ON	Constantly ON	Constantly OFF
Power switching detection $V_{DD} < V_{DET2}$	Constantly ON	Constantly ON	Constantly ON	Once/31.25 ms
Full charge detection $V_{BAT} > V_{DET3}$	Once/1.0 s	Once/1.0 s	Once/1.0 s	Constantly OFF
Low- $V_{BAT}$ detection $V_{DD} < V_{DET4}$	Once/1.0 s	Once/1.0 s	Once/1.0 s	Constantly OFF

\* In normal mode, when operating the RTC on  $V_{DD}$ -supply, SW1 has to be opened (Off) to perform the  $V_{DD}$  voltage detection for below mentioned times

**Table 37  $V_{DET3}$ ,  $V_{DET4}$  intermittent detection period**

Power supply operation mode	SMPTSEL1,0	$V_{DD}$ operation (Backup battery is charging)	$V_{DD}$ operation (Backup battery is fully charged)	$V_{DD}$ operation (After return from backup $V_{DET1} > V_{DD} > V_{DET2}$ )
		SW1 Off time. *	00b (default)	2 ms
	01b	16 ms	16 ms	2 ms
	10b	128 ms	128 ms	2 ms
	11b	256 ms	256 ms	2 ms



**Figure 33 V<sub>DD</sub> detection (V<sub>DET2</sub>) timing**

V<sub>DD</sub> voltage drop detection (V<sub>DET2</sub>) is work always, in Normal mode.

Shorter SW1:OFF times are suitable to detect fast external voltage drops on V<sub>DD</sub>. On the other hand, in order to detect a slower external voltage drop on V<sub>DD</sub>, a longer SW1:OFF detection time is needed. But longer SW1:OFF period increases the current consumption.

Users are requested to evaluate SW1:OFF period based on actual system configuration and characteristics.

In backup mode V<sub>DD</sub> detection (V<sub>DET2</sub>) is activated once every 31.25 ms.

Note: Re-chargeable battery is charged through diode during1 the term of SW1 = OFF. Longer this term (ex. 256 ms) makes decreasing battery charging efficiency.

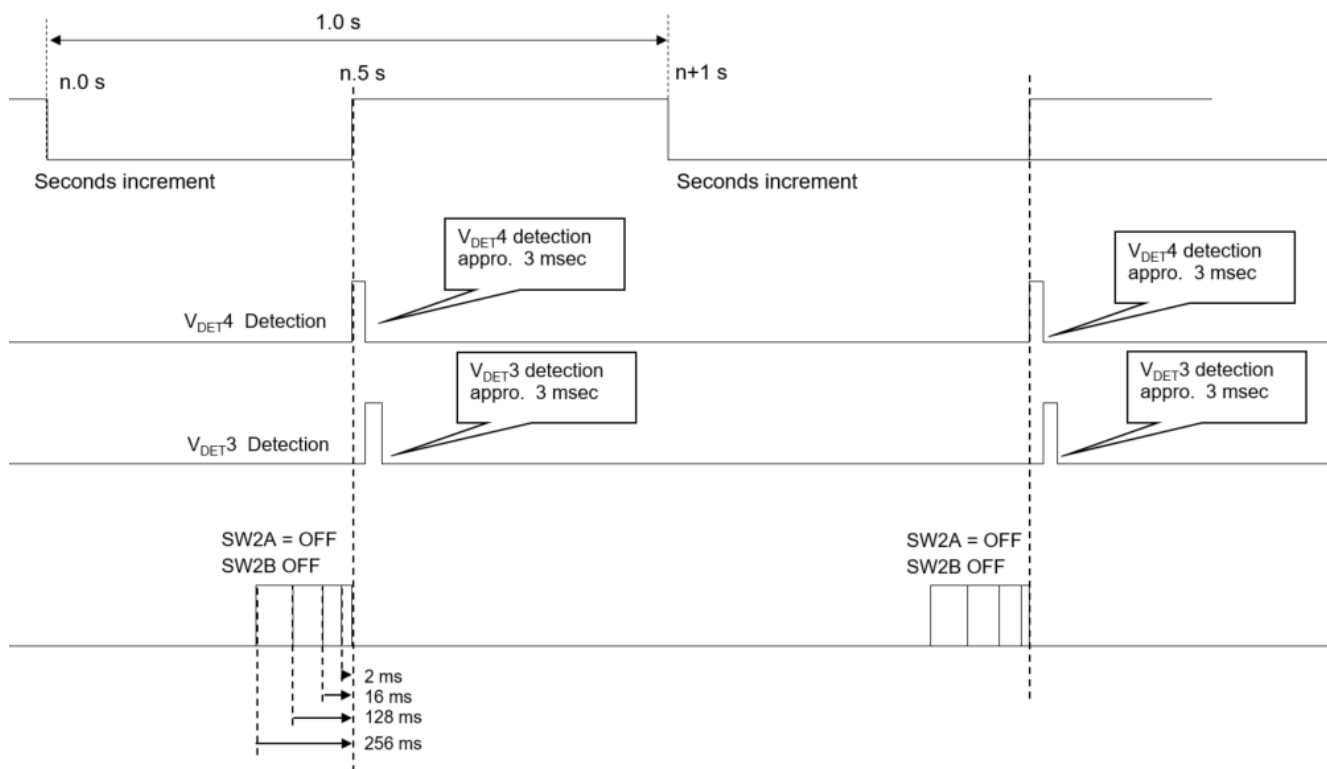


Figure 34 VDET3, VDET4 voltage detection timing) BFVSEL1, BFVSEL0 bit

15.6 Detection voltage setting

Table 38 VDET1,VDET2,VDET3,VDET4 setting

Item	Symbol	Detect voltage Typ.	setting
VDET1	Reset /Reset-release voltage	+VDET11 / -VDET11	2.8V / 2.75V
		+VDET12 / -VDET12	2.7V / 2.65V
VDET2	Backup switchover/recover voltage	+VDET2 / -VDET2	1.35V / 1.30V
VDET3	Full charge detection voltage	+VDET31 / -VDET31	3.02V / 2.97V
		+VDET30 / -VDET30	2.92V / 2.87V
		+VDET32 / -VDET32	3.08V / 3.03V
VDET4	V <sub>BAT</sub> low-voltage detection voltage	-VDET4	2.4V

4) The full-charge detection (VDET3) and low-V<sub>BAT</sub> detection (VDET4) control SW2.

Table 39 BFVSEL1, BFVSEL0

BFVSEL1	BFVSEL0	Description
0	0	3.02 V (default)
0	1	3.08 V
1	0	2.92 V
1	1	OFF (Charging without limit)

- 5) VBFF bit  
This bit indicates if the battery is fully charged (update Every 1sec)

**Table 40 VBFF**

VBFF	Data	Description
Read	0	Charging
	1	Full charge of V <sub>BAT</sub> detected (voltage level defined by BFFVSEL-bit is reached)

This flag shows the V<sub>BAT</sub> charge state.

- 6) VBLF bit  
LOW V<sub>BAT</sub> detection

**Table 41 VBLF**

VBLF	Data	Description
Write	0	Cleared to zero to prepare for the next status detection.
	1	Invalid (writing a 1 will be ignored)
Read	0	-
	1	Low-V <sub>BAT</sub> has been detected (V <sub>DET4</sub> )

- 7) VBLFE bit  
Re-chargeable battery full charge detection (Every 1 s)

**Table 42 VBLFE**

VBLFE	Data	Description
Write	0	CHGEN:0 VBLF detection not available CHGEN:1 VBLF detection available (during normal mode re-chargeable battery charging)
	1	During V <sub>DD</sub> supply VBLF detection available

To use VBLF detection, it must be set up "INIEN=1" before the setting once at least, and VBLFE bit setting. During normal mode (V<sub>DD</sub> drive) V<sub>BAT</sub> low voltage (Non-rechargeable, rechargeable battery) can be detected. In case of backup mode VBLF function is not available, VBLF is detected after returning to normal mode.

- 9): STOP bit function

When STOP=1, in backup-mode, 31.25ms period of V<sub>DET2</sub> detection stops.  
As a result, power supply switching becomes insufficient, and there is the possibility that a leak current occurs.  
When STOP=1 and shift to backup-mode, clear the STOP bit to 0 after V<sub>DD</sub>-ON immediately.

15.7. Power supply control

By setting battery backup registers (INIEN, CHGEN), the RX8130CE operates like following either in re-chargeable battery or non-re-chargeable battery operation.

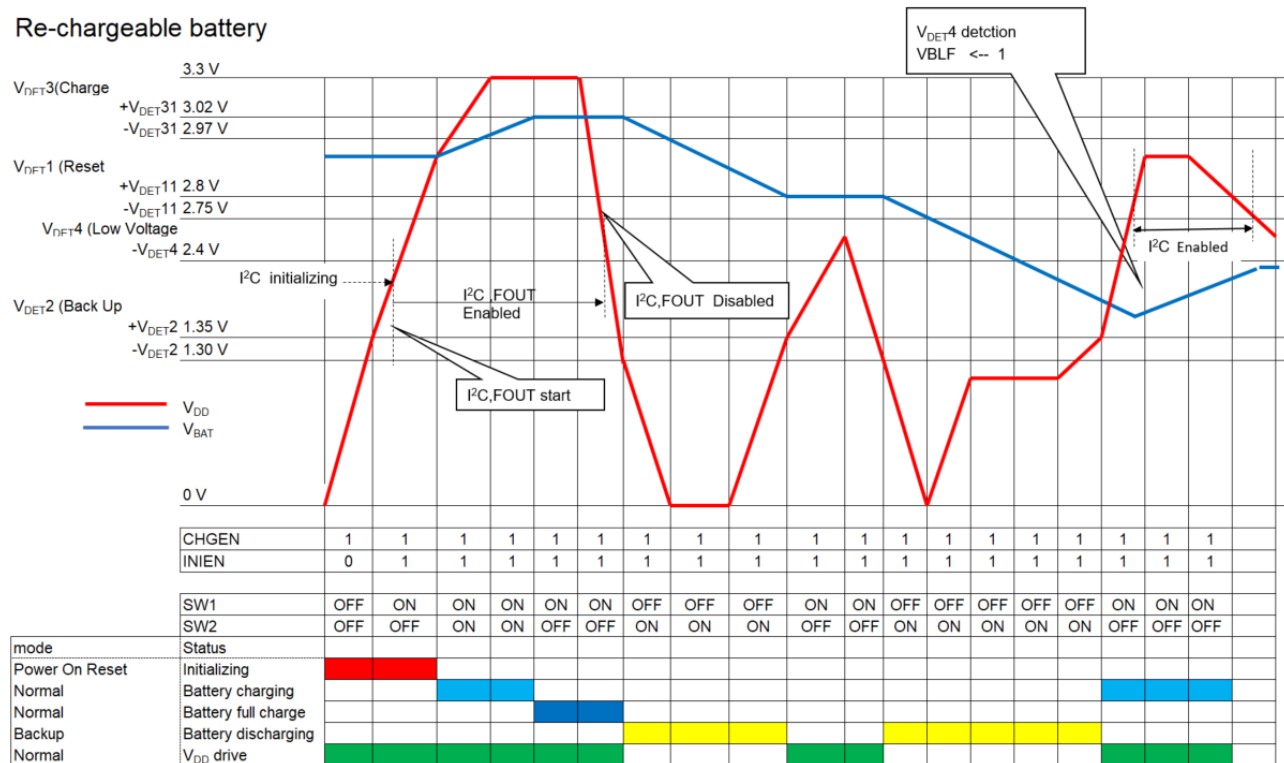


Figure 35 Re-chargeable battery operation

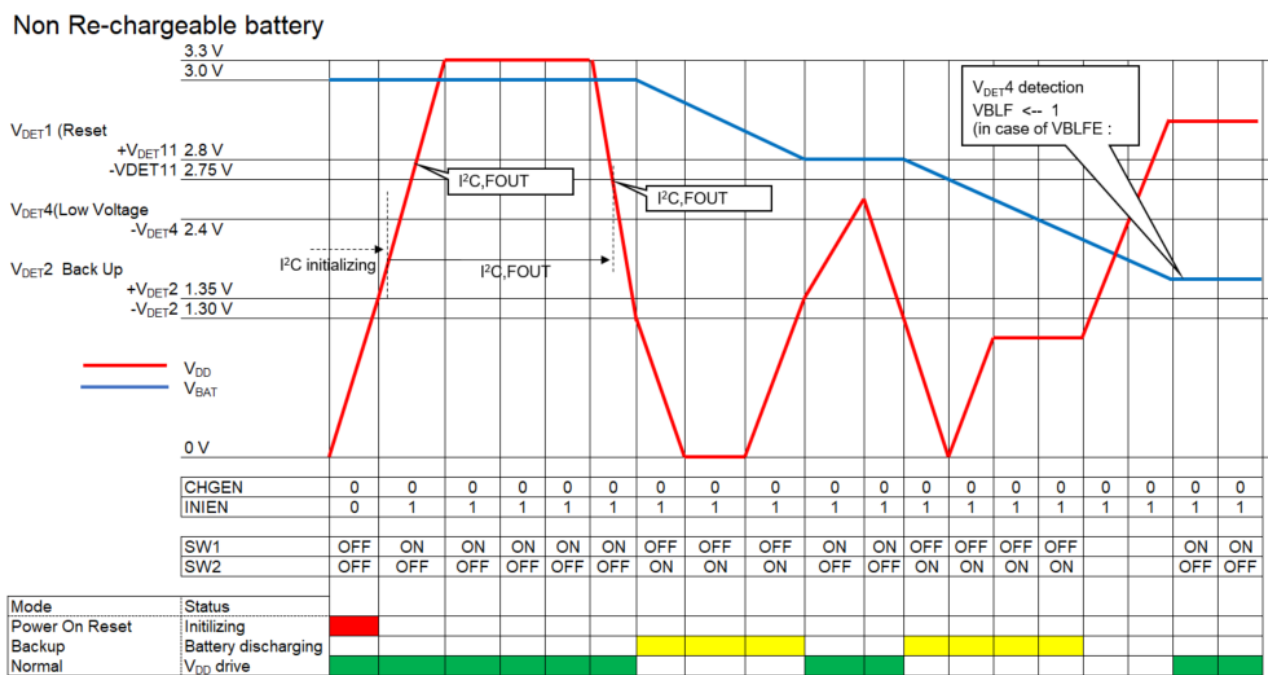
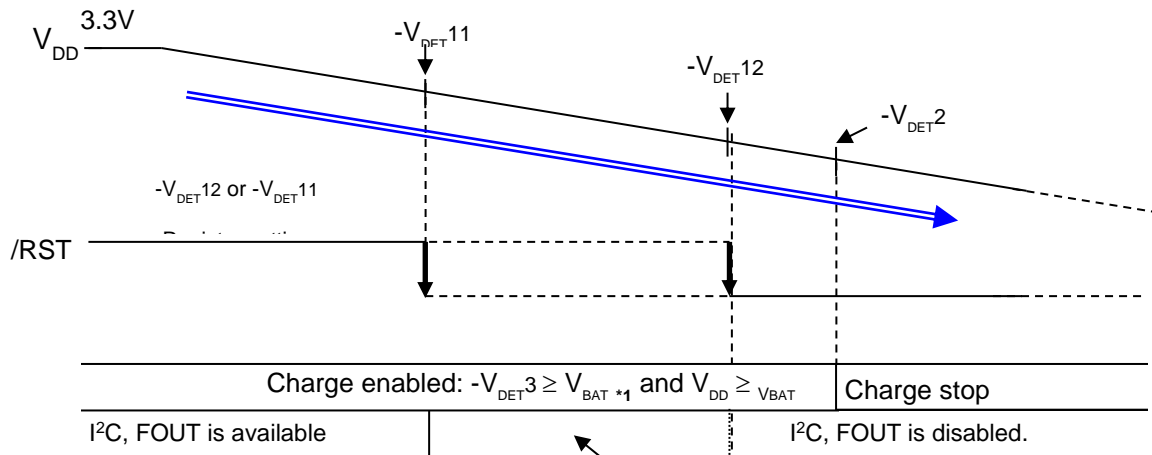


Figure 36 Non re-chargeable battery operation



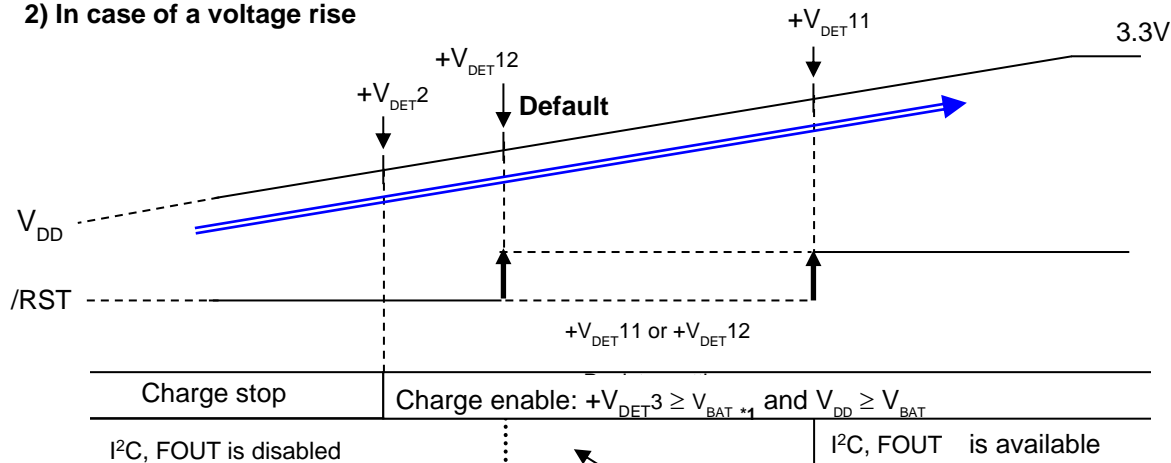
15.8 Main power supply ( $V_{DD}$ ) voltage and operation state (INIEN bit = 1)

1) In case of a voltage drop



A function of I<sup>2</sup>C and FOUT stops in sync with the /RST

2) In case of a voltage rise



A function of I<sup>2</sup>C and FOUT stops in sync with the /RST output

When full charge detection was deactivated ( $V_{DET3}$ ) by register setting,  $V_{BAT}$  is only charged if  $V_{DD}$

Figure 37 I<sup>2</sup>C, FOUT operation during voltage drop and rise

15.9. Backup power supply ( $V_{BAT}$ ) voltage and a charge state

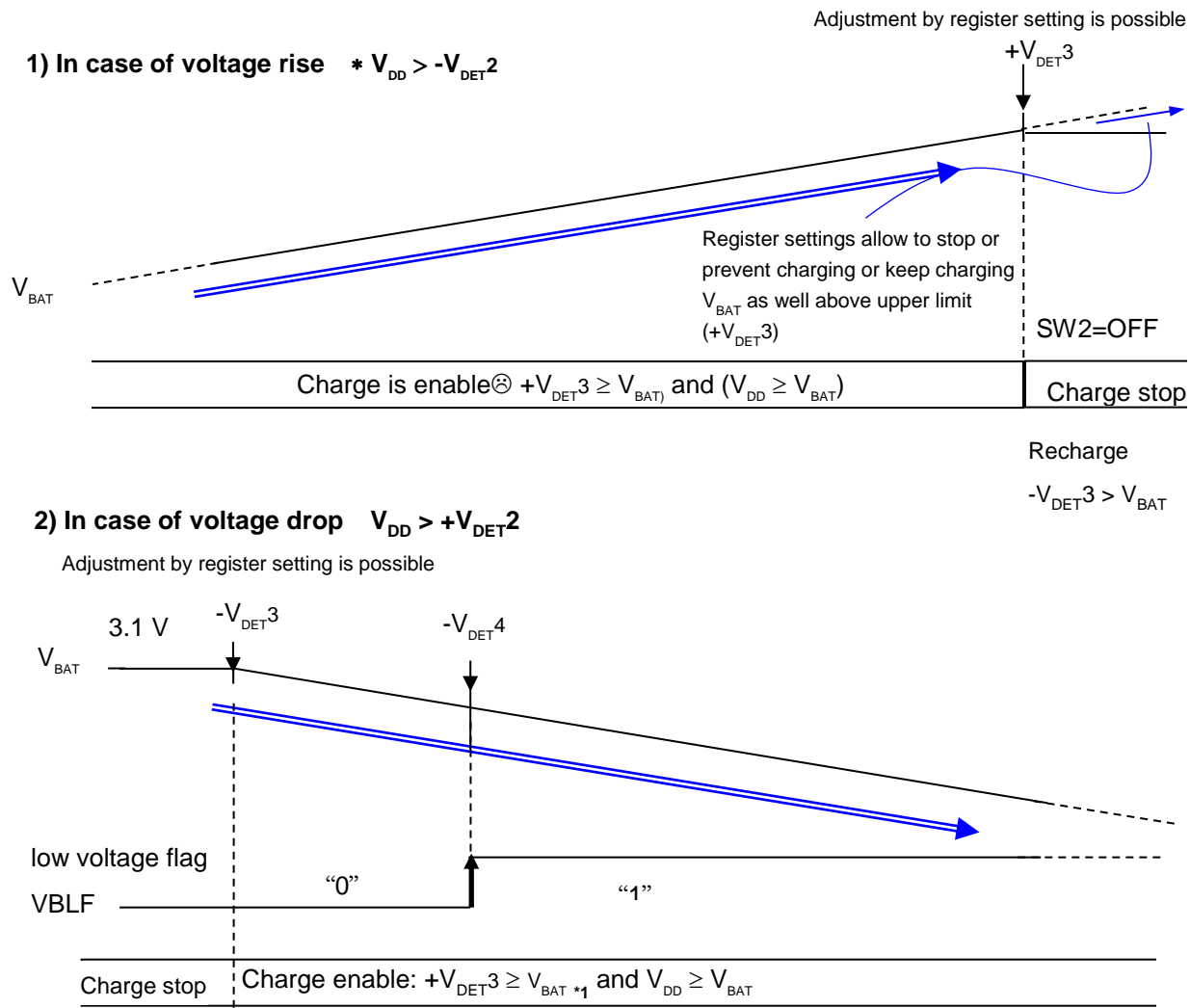


Figure 38 Re-chargable battery operation during voltage rise and down

## 16. Reset output function

This RTC has a built-in Reset-Controller, which outputs a Reset-signal on the /RST-pin to control external HW like MCUs in case of a drop in supply voltage. When the  $V_{DD}$  voltage drops below  $V_{DET1}$  (register selectable  $V_{DET11}$  or  $V_{DET12}$ ), a /RST-signal is output. Once  $V_{DD}$  raises beyond  $V_{DET1}$  voltage again, the /RST-signal is released. In case INIEN bit is set to "1", I<sup>2</sup>C and FOUT are stopped when  $V_{DD}$  drops below  $V_{DET1}$ .

### 14.8.1. Related register of reset output function

Address h	Function	bit 7	bit 6	bit 5	bit 4	bit 3	bit 2	bit 1	bit 0
1D	Flag Register	VBLF	0	UF	TF	AF	<b>RSF</b>	VLF	VBFF
1F	Control Register1	SMP TSEL1	SMP TSEL0	CHG EN	INIEN	0	<b>RS VSEL</b>	BF VSEL1	BF VSEL0

#### 1) RSVSEL-bit

Setting of  $V_{DET1}$  voltage level. In case  $V_{DD}$  drops below this level, the /RST-signal is output and the I/F and FOUT output are stopped (depending on INIEN-bit setting).

**Table 43 RSVSEL**

RSVSEL	Data	Description
Write / Read	0	$-V_{DET11}$ (2.75 V) (default)
	1	$-V_{DET12}$ (2.70 V)

#### 2) RSF-bit

This bit holds the result of detecting the reset voltage.

**Table 44 RSF bit**

RSF	Data	Description
Write	0	The RSF is cleared to 0 and waiting for next low voltage detection.
	1	Invalid (writing a 1 will be ignored)
Read	0	-
	1	A voltage drops below $-V_{DET1}$ was detected.

## 17. Digital offset function

With this function it is possible to increase or decrease the speed of the time counting and thus put a positive or negative offset to the clock precision. The adjustment range for this offset correction is  $+192.3 \times 10^{-6}$  to  $-195.3 \times 10^{-6}$  in steps of  $3.05 \times 10^{-6}$ .

### 17.1. Digital offset register

Address h	Function	bit 7	bit 6	bit 5	bit 4	bit 3	bit 2	bit 1	bit 0
30	Digital offset	DTE	L7	L6	L5	L4	L3	L2	L1

- DTE="1" enables the digital offset function.

When the digital offset function is enabled, the digital offset register digitally offsets the sub-second clocks according to the values set in the digital offset register. This correction of the second time register occurs every 10 seconds and the level of correction depends on the offset required. When outputting a 32.768 kHz signal on FOUT-pin, this function has no influence, since the oscillation frequency of the built-in crystal does not change by using this function. In case of outputting a 1 Hz or 1024 Hz signal on FOUT, the offset correction will cause a certain jitter on the clock signal.

Alarm function as well as the Wakeup Timer function (if source clock lower than 4096 Hz is selected) are affected by this function.

- In order to disable the digital offset function, set to DTE = "0". In this case the L1 to L7 are ignored.

- Below table shows the relationship of the L7~L1 bit and the digital offset value

When the L7 bit = "0", the offset is positive (clock runs faster), when the L7 bit = "1", the offset is negative (the clock runs slower).

**Table 45 Digital Adjustment**

Digital offset bits							Offset value ( $\times 10^{-6}$ )
L7	L6	L5	L4	L3	L2	L1	
0	1	1	1	1	1	1	+192.26
0	1	1	1	1	1	0	+189.21
			•				•
			•				•
0	0	0	0	0	1	0	+6.10
0	0	0	0	0	0	1	+3.05
0	0	0	0	0	0	0	$\pm 0.00$
1	1	1	1	1	1	1	-3.05
1	1	1	1	1	1	0	-6.10
			•				•
			•				•
1	0	0	0	0	0	1	-192.26
1	0	0	0	0	0	0	-195.31

The offset value is calculated on basis of a shift of the built-in crystal frequency.

- How to calculate the offset value

1 ) When the offset value is positive:

$L[7 \sim 1] = [\text{Offset Value}] / 3.05$  However, decimals are discarded.

Example calculation: When the offset value is  $+192 \times 10^{-6}$

$$L[7 \sim 1] = 192.26 / 3.05 = 63 \text{ (Dec)}$$

$$= 0111111 \text{ (bin) is set.}$$

2 ) When the offset value is negative:

$L[7 \sim 1] = 128 - [\text{Offset Value}] / 3.05$  However, decimals are discarded.

Example calculation: When the offset value is  $-158 \times 10^{-6}$

$$L[7 \sim 1] = 128 - (158 / 3.05) = 76 \text{ (Dec)} = 1001100 \text{ (bin) is set.}$$

3 ) When calculate from accuracy of a clock

To adjust 30 seconds in 30 days:

Example calculation:  $30 \text{ sec.} / 2592000 \text{ s (30days)} = 11.57 \times 10^{-6}$

Positive offset

$$L[7 \sim 1] = 11.57 / 3.05 = 4 \text{ (Dec)}$$

However, decimals are discarded.  
= 0000100(bin) is set.

Negative offset

$$L[7 \sim 1] = 128 - (11.57 / 3.05) = 124 \text{ (Dec)}$$

However, decimals are discarded.  
= 1111100(bin) is set.

## 17.2. Effect of the digital offset function to other functions

Because this function adjusts an internal sub-second clock, this function affects the a Wakeup timer interrupt function and FOUT function

1) FOUT function

- 1 Hz setting: Once in 10 seconds, the 1 Hz period fluctuates.
- 1024 Hz setting: Once in 10 seconds, the 1024 Hz period fluctuates.

\*There are cases where there is no fluctuation, depending on the offset correction value.

- 32.768 kHz Not affected.

2) Wakeup timer interrupt function

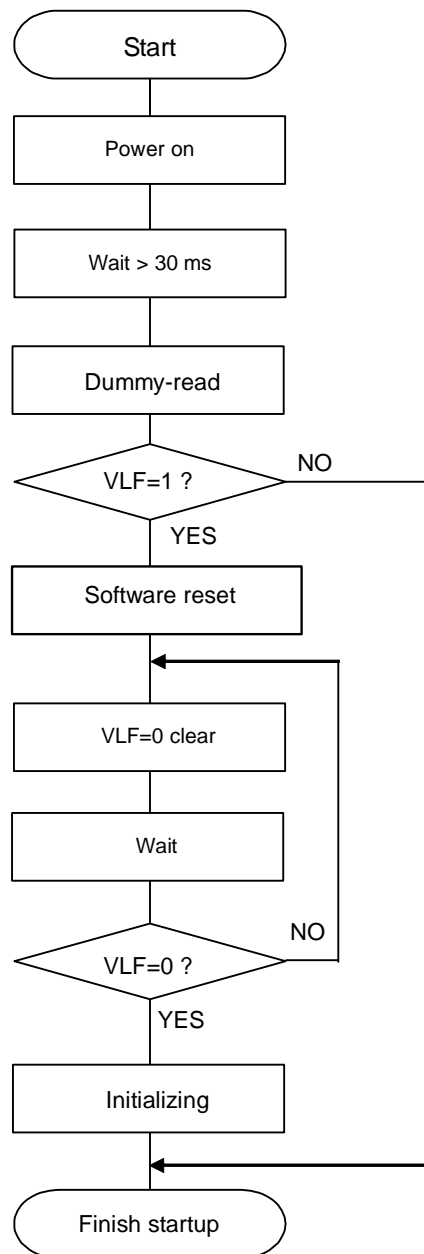
- 64 Hz or 1 Hz source clock setting: Once in 10 seconds, the period fluctuates.  
When the timer intervals are long, the fluctuations appear small.

- 4096 Hz source clock setting: Not affected.

18. Flow-chart

The following flow-chart is one example, but it is not necessarily applicable for every use-case and not necessarily the most effective process for individual applications.

18.1 Initializing example



- At least 30 ms wait time is needed. So that it is stable RTC. 40 ms is not oscillation startup time
- When the power supply conditions for which Power-On Reset is executed cannot be satisfied, then must be execute a Dummy-read. Dummy read is one time read access to a free address Ignore ACK / NACK from RX8130CE in Dummy-read.

Judge RX8130CE returned from backup normally, or fail.

When the power conditions for which the power-on reset is executed are not satisfied, execute a software reset. For [Software Reset], start from "4) of "18.2 Software Reset."

VLF cannot be cleared to 0 until internal oscillation starts.

Set any waiting time.

Set the maximum number of loops, for an trouble of crystal oscillation

Figure 39 Example flow (Power initialization)

## 18.2 Software Reset

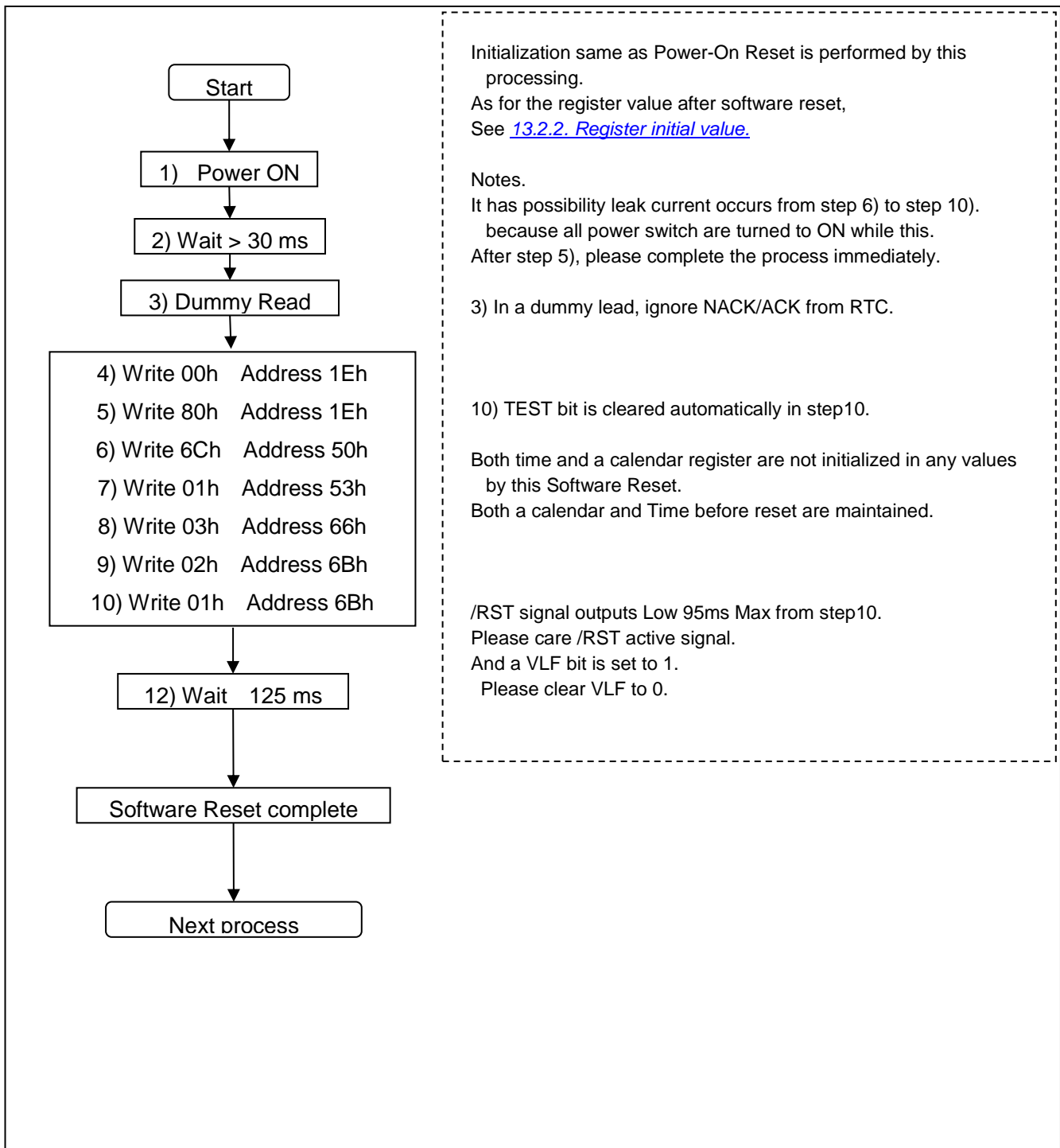


Figure 40 Example Flow(Software Reset)

## 18.3 Example of Initialization routine

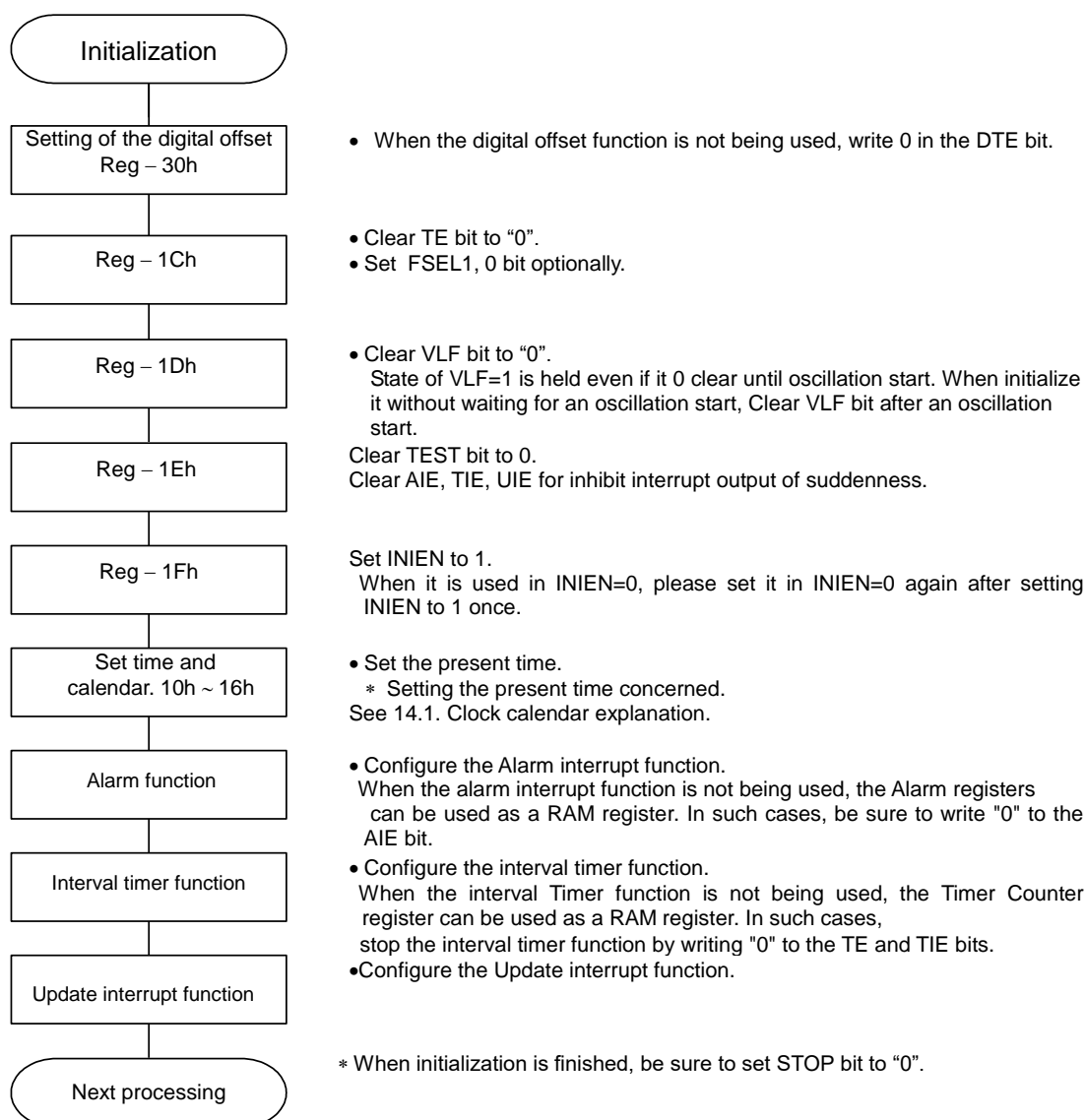


Figure 41 Example flow (Initialization)



18.4 Example of Initialization routine (only clock usage)

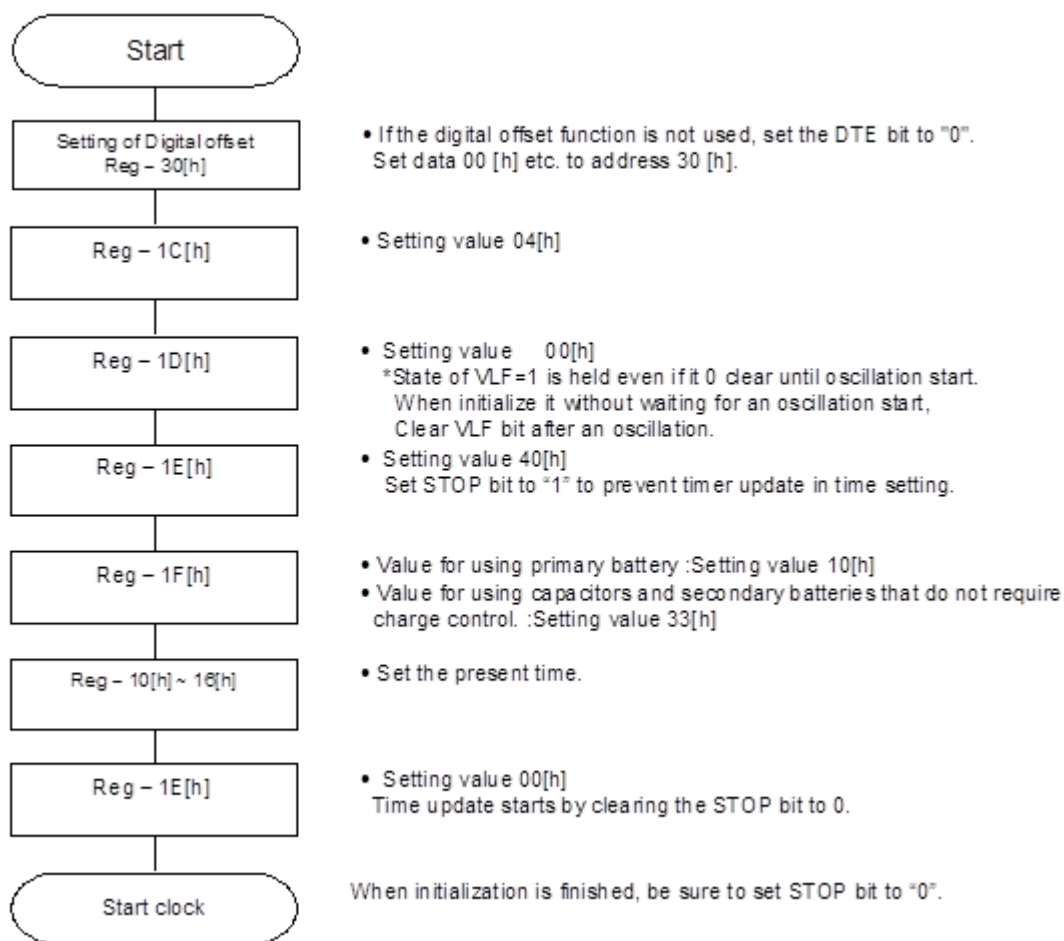


Figure 42 Example flow (initialization only clock usage)

18.5 The setting of the clock and calendar

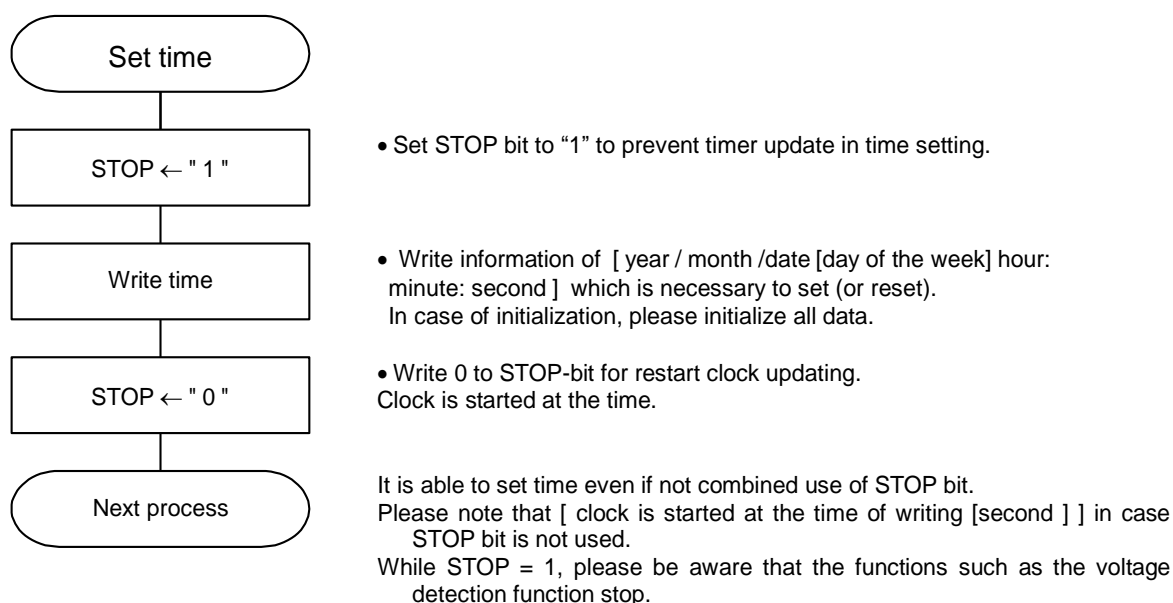


Figure 43 Example flow (Clock, calendar setting)

## 18.6 The reading of the clock and calendar

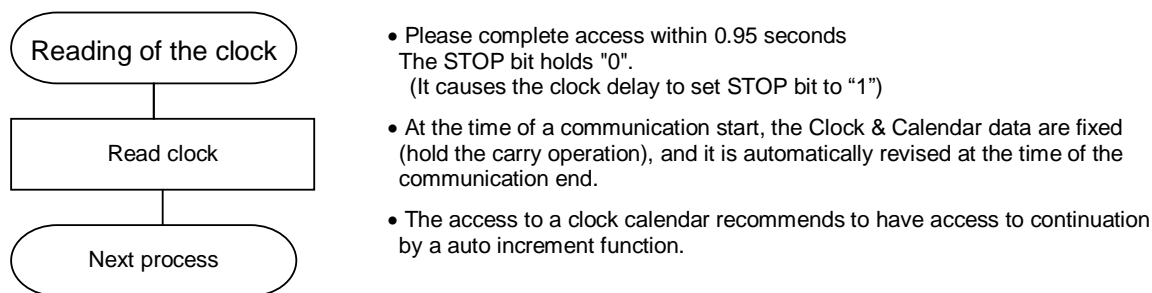


Figure 44 Example flow (Clock, calendar reading)

## 18.7 Setting example of the wakeup timer interrupt function

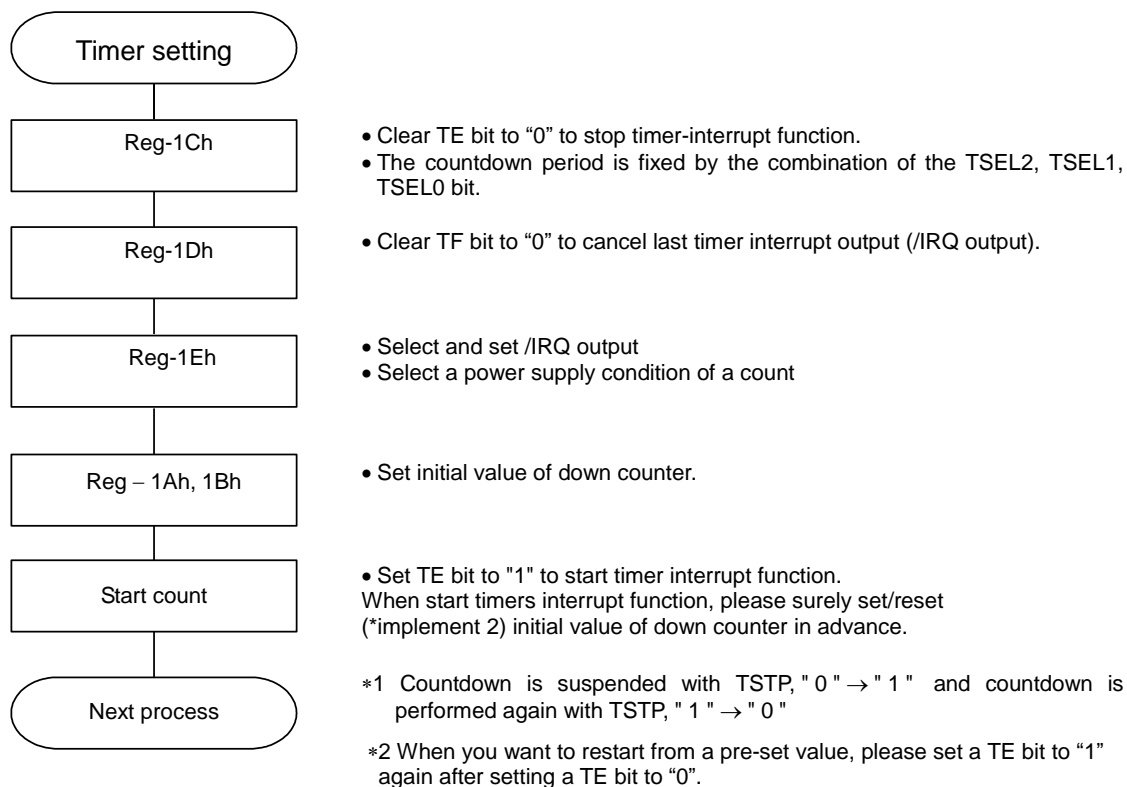


Figure 45 Example flow (Wakeup timer interruption)

## 18.8 Setting example of the Alarm interrupt function

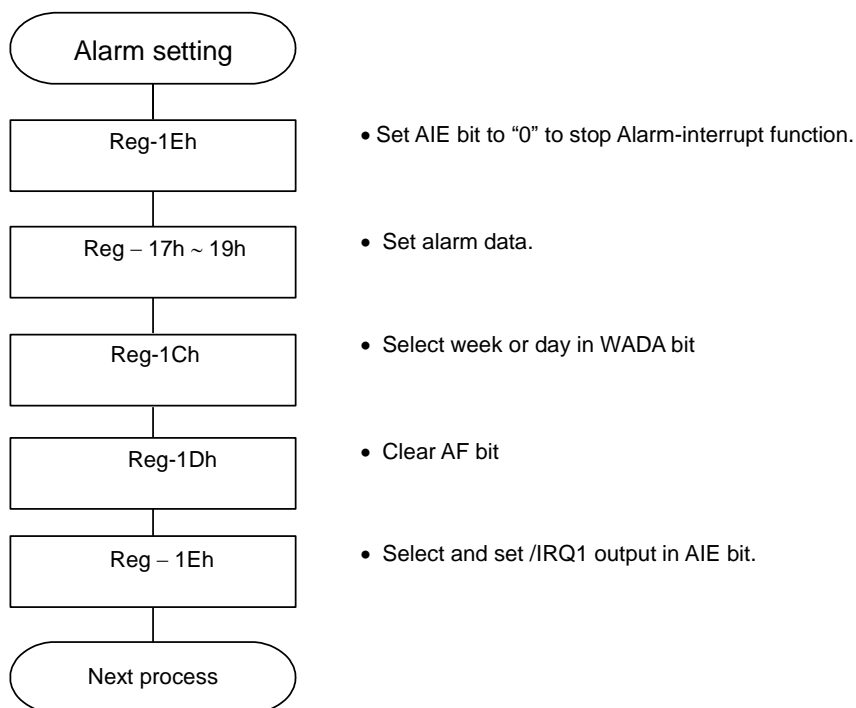


Figure 46 Example flow (Alarm interruption)

## 19 Serial communication

### 19.1 Overview of I<sup>2</sup>C-Bus Interface

The I<sup>2</sup>C-bus supports bi-directional communications via two signal lines: the SDA (data) line and SCL (clock) line. A combination of these two signals is used to transmit and receive communication start/stop signals, data transfer signals, acknowledge signals, and so on.

Both the SCL and SDA signals are held at high level whenever communications are not being performed.

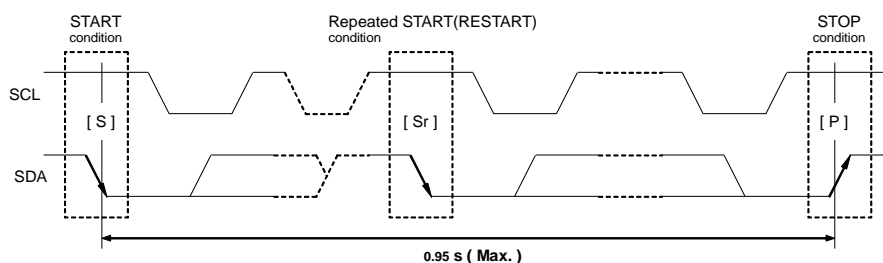
The starting and stopping of communications is controlled at the rising edge or falling edge of SDA while SCL is at high level.

### 19.2 Data transfers

Data transfers are performed in 8-bit (1 byte) units once the START condition has occurred. There is no limit on the amount (bytes) of data that are transferred between the START condition and STOP condition.

(However, the transfer time must be no longer than 0.95 seconds.)

### 19.3 Starting and stopping I<sup>2</sup>C-Bus communications



**Figure 47 I<sup>2</sup>C-Bus start/stop timing**

#### 1) START condition, repeated START condition, and STOP condition

##### (1) START condition

- The SDA level changes from high to low while SCL is at high level.

##### (2) STOP condition

- This condition regulates how communications on the I<sup>2</sup>C-Bus are terminated. The SDA level changes from low to high while SCL is at high level.

##### (3) Repeated START condition (RESTART condition)

- In some cases, the START condition occurs between a previous START condition and the next STOP condition, in which case the second START condition is distinguished as a RESTART condition. Since the required status is the same as for the START condition, the SDA level changes from high to low while SCL is at high level.
- When accessing this device, all communication from transmitting the start condition to transmitting the stop condition after access should be completed within 0.95 seconds. If communication requires 0.95 seconds or longer, the I<sup>2</sup>C bus interface is reset by the internal bus timeout function.

### 19.4 Slave address

The I<sup>2</sup>C-Bus devices do not have any chip select or chip enable pins. All I<sup>2</sup>C-Bus devices are memorized with a fixed unique number in it. The chip selection on the I<sup>2</sup>C-Bus is executed, when the interface starts, the master device sends the required slave address to all devices on the I<sup>2</sup>C-Bus. The receiving device only reacts for interfacing, when the required slave address is agreed with its own slave address.

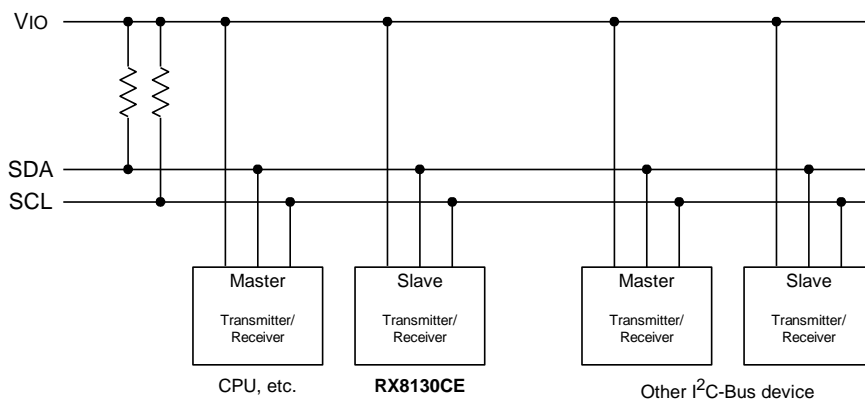
During in actual data transmission, the transmitted data contains the slave address and the data with R/W

Slave address							R/W bit
bit 7	bit 6	bit 5	bit 4	bit 3	bit 2	bit 1	bit 0
0	1	1	0	0	1	0	R/W
0 is Write mode 1 is Read mode							↑

## 19.5 System configuration

All ports connected to the I<sup>2</sup>C-Bus must be either open drain or open collector ports in order to enable AND connections to multiple devices.

SCL and SDA are both connected to the VIO line via a pull-up resistance. Consequently, SCL and SDA are both held at high level when the bus is released (when communication is not being performed).



**Figure 48 I<sup>2</sup>C-Bus connection**

Any device that controls the data transmission and data reception is defined as a "Master".

and any device that is controlled by a master device is defined as a "Slave".

The device transmitting data is defined as a "Transmitter" and the device receiving data is defined as a receiver"

In the case of this RTC module, controllers such as a CPU are defined as master devices and the RTC module is defined as a slave device. When a device is used for both transmitting and receiving data, it is defined as either a transmitter or receiver depending on these conditions.

19.6 I<sup>2</sup>C-Bus protocol

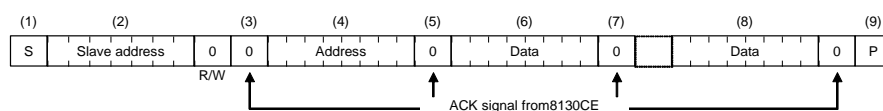
In the following sequence descriptions, it is assumed that the CPU is the master and the RX8130CE is the slave.

## 1) Address specification write sequence

Since the RX8130CE includes an address auto increment function, once the initial address has been specified, the RX8130 increments (by one byte) the receive address each time data is transferred.

Address circulation of auto increment function.	10h ->1Fh -> 10h
	20h ->2Fh -> 20h
	30h ->3Fh -> 30h

- (1) CPU transfers start condition [S].
- (2) CPU transmits the RX8130CE's slave address with the R/W bit set to write mode.
- (3) Check for ACK signal from RX8130CE.
- (4) CPU transmits write address to RX8130CE.
- (5) Check for ACK signal from RX8130CE.
- (6) CPU transfers write data to the address specified at (4) above.
- (7) Check for ACK signal from RX8130CE.
- (8) Repeat (6) and (7) if necessary. Addresses are automatically incremented.
- (9) CPU transfers stop condition [P].



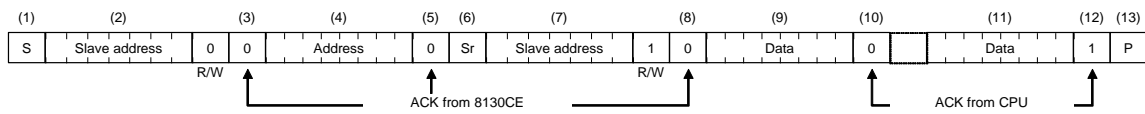
## 2) Address specification read sequence

After using write mode to write the address to be read, set read mode to read the actual data.

- (1) CPU transfers start condition [S].
- (2) CPU transmits the RX8130CE's slave address with the R/W bit set to write mode.
- (3) Check for ACK signal from RX8130CE.
- (4) CPU transfers address for reading from RX8130CE.
- (5) Check for ACK signal from RX8130CE.
- (6) CPU transfers RESTART condition [Sr] (in which case, CPU does not transfer a STOP condition [P]).
- (7) CPU transfers RX8130CE's slave address with the R/W bit set to read mode.
- (8) Check for ACK signal from RX8130CE (from this point on, the CPU is the receiver and the RX8130 is the transmitter).
- (9) Data from address specified at (4) above is output by the RX8130.
- (10) CPU transfers ACK signal to RX8130CE.
- (11) Repeat (9) and (10) if necessary. Read addresses are automatically incremented.

(12) CPU transfers ACK signal for "1".

(13) CPU transfers stop condition [P].



### 3) Read sequence when address is not specified

Once read mode has been initially set, data can be read immediately. In such cases, the address for each read operation is the previously accessed address + 1.

(1) CPU transfers start condition [S].

(2) CPU transmits the RX8130CE's slave address with the R/W bit set to read mode.

(3) Check for ACK signal from RX8130CE (from this point on, the CPU is the receiver and the RX8130CE is the transmitter).

(4) Data is output from the RX8130 to the address following the end of the previously accessed address.

(5) CPU transfers ACK signal to RX8130CE.

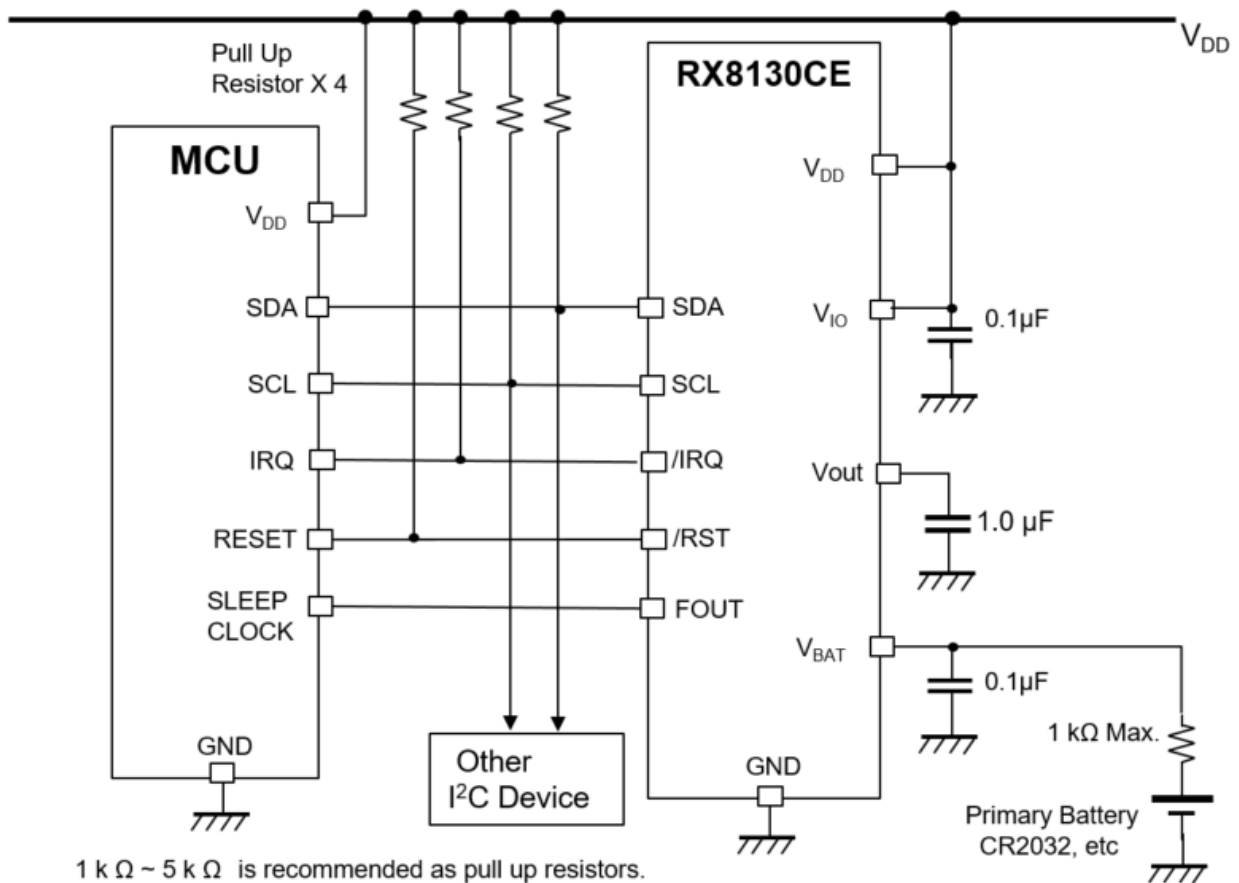
(6) Repeat (4) and (5) if necessary. Read addresses are automatically incremented in the RX8130.

(7) CPU transfers ACK signal for "1".

(8) CPU transfers stop condition [P].

## 20 Circuit Diagram connection

## 20.1 Typical MCU connection



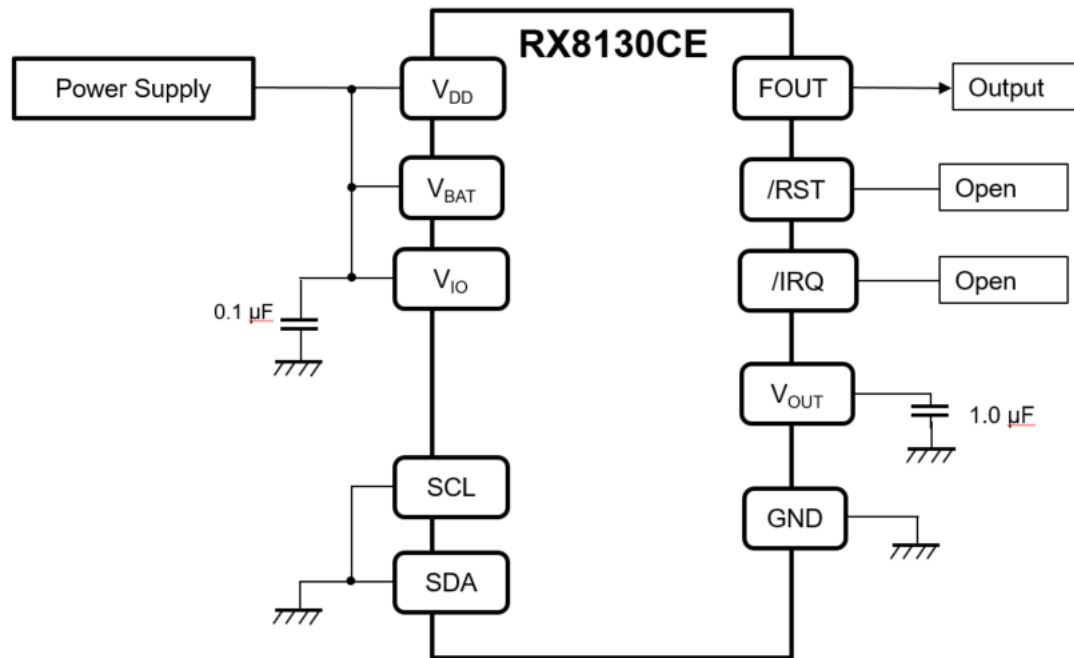
1 k  $\Omega$  ~ 5 k  $\Omega$  is recommended as pull up resistors.  
 For I<sup>2</sup>C bus spec (tr,tf,Vol),SDA, SCL signal is to be monitored with oscilloscope.  
 Each capacitor should be located in the vicinity area of RTC pins.  
 The capacitor to Vout pin is 1.0μF, bigger than others.

**Figure 49 Typical MCU connection**



## 20.2 32.768 kHz oscillator application connection

See also [14.6. FOUT function](#)



Each capacitor should be located in the vicinity of RTC pins.

**Figure 50 32.768 kHz oscillator connection**

## 21. Tables

Table 1 Pin Description.....	7
Table 2 Absolute Maximum Rating.....	10
Table 3 Recommended Operation Condition.....	10
Table 4 Frequency Characteristics.....	10
Table 5 DC characteristics (1).....	11
Table 6 DC characteristics(2).....	12
Table 7 AC characteristics.....	13
Table 8 AC characteristics (FOUT).....	13
Table 9 AC Characteristics (Reset).....	14
Table 10 Reset timing.....	14
Table 11 Power supply characteristics.....	16
Table 12 Register Table.....	20
Table 13 Register initial value, Read/Write.....	21
Table 14 Time, calendar setting example (Sun, 29-Feb-88 17:39:45 (leap year)).....	24
Table 15 Setting example of the week register value.....	25
Table 16 Countdown period (source clock) selection.....	26
Table 17 Wakeup timer control.....	27
Table 18 Wakeup timer interrupt detection flag.....	28
Table 19 Wakeup timer interrupt control.....	28
Table 20 Wakeup timer normal mode/backup mode control.....	28
Table 21 Wakeup timer stop control.....	28
Table 22 Wakeup timer interrupt cycles.....	30
Table 23 WEEK/DAY control.....	33
Table 24 Alarm Flag.....	33
Table 25 Alarm Interrupt control.....	33
Table 26 WEEK alarm example.....	33
Table 27 DAY alarm example.....	34
Table 28 Second/Minute selection.....	35
Table 29 Time update Flag.....	35
Table 30 Time update interrupt control.....	35
Table 31 Oscillation stop detection flag.....	37
Table 32 FOUT Frequency selection.....	37
Table 33 Reference characteristics of switching elements.....	38
Table 34 CHGEN bit.....	40
Table 35 INIEN bit.....	40
Table 36 Voltage detection timing.....	43
Table 37 VDET3, VDET4 intermittent detection period.....	43
Table 38 VDET1, VDET2, VDET3, VDET4 setting.....	45
Table 39 BFVSEL1, BFVSEL0.....	45

Table 40 VBFF .....	46
Table 41 VBLF .....	46
Table 42 VBLFE .....	46
Table 43 RSVSEL .....	50
Table 44 RSF bit .....	50
Table 45 Digital Adjustment .....	51

## 22. Figures

Figure 1 Block Diagram .....	6
Figure 2 Package .....	7
Figure 3 Circuit EX1 .....	8
Figure 4 Circuit EX2 .....	8
Figure 5 Circuit EX3 .....	8
Figure 6 Circuit EX4 .....	8
Figure 7 External Dimension and Soldering pattern .....	9
Figure 8 Marking Layout .....	9
Figure 9 I <sup>2</sup> C-Bus Interface Timing Chart .....	13
Figure 10 Reset signal timing chart (Power Initial Supply) .....	14
Figure 11 Reset signal timing chart ( Backup resume ) .....	14
Figure 12 Power supply initial sequence .....	15
Figure 13 Power-On sequence1 .....	16
Figure 14 Power-On sequence2 .....	16
Figure 15 Frequency temperature characteristics .....	17
Figure 16 Basic (32.768 k Hz oscillation, counter, FOUT) Function .....	24
Figure 17 Wakeup timer initial sequence .....	27
Figure 18 Wakeup timer block diagram .....	27
Figure 19 Wakeup timer start sequence .....	29
Figure 20 Wakeup timer inner block diagram .....	30
Figure 21 Wakeup timer timing chart .....	31
Figure 22 Alarm interrupt inner block diagram .....	34
Figure 23 Alarm Interrupt time chart .....	34
Figure 24 Time update inner block diagram .....	36
Figure 25 Time update time chart .....	36
Figure 26 Battery backup switchover block diagram .....	38
Figure 27 V <sub>BAT</sub> charge current characteristics V <sub>DD</sub> = 3.0 V, 5.5 V .....	39
Figure 28 Re-chargeable battery connection .....	39
Figure 29 Non re-chargeable battery SW1, SW2 control (INIEN:1, CHGEN:0) .....	40
Figure 30 Non Re-chargeable battery SW1, SW2 control (INIEN = 1, CHGEN = 0) .....	40
Figure 31 Re-chargeable battery SW1, SW2 control (INIEN = 1, CHGEN = 1) .....	41
Figure 32 Battery backup (SW1, SW2 automatic control) .....	42

Figure 33 V <sub>DD</sub> detection (VDET2) timing .....	44
Figure 34 VDET3, VDET4 voltage detection timing) BFVSEL1, BFVSEL0 bit .....	45
Figure 35 Re-chargeable battery operation.....	47
Figure 36 Non re-chargeable battery operation .....	47
Figure 37 I <sup>2</sup> C, FOUT operation during voltage drop and rise.....	48
Figure 38 Re-chargeable battery operation during voltage rise and down .....	49
Figure 39 Example flow (Power initialization).....	53
Figure 40 Example Flow(Software Reset).....	54
Figure 41 Example flow (Initialization).....	55
Figure 42 Example flow (initialization only clock usage) .....	56
Figure 43 Example flow (Clock, calendar setting) .....	56
Figure 44 Example flow (Clock, calendar reading).....	57
Figure 45 Example flow (Wakeup timer interruption) .....	57
Figure 46 Example flow (Alarm interruption) .....	58
Figure 47 I <sup>2</sup> C-Bus start/stop timing .....	59
Figure 48 I <sup>2</sup> C-Bus connection.....	60
Figure 49 Typical MCU connection.....	63
Figure 50 32.768 kHz oscillator connection.....	64

Application Manual  
Real Time Clock Module  
**RX8130CE**



---

## Contacts

---

### America

---

#### Epson America, Inc.

##### Headquarter

3131 Katella Avenue Los Alamitos, CA 90720 USA  
[www.epson.com/microdevices](http://www.epson.com/microdevices)

##### San Jose Office

214 Devcon Drive, San Jose, CA 95112 USA

### Europe

---

#### Epson Europe Electronics GmbH

##### Headquarter

Riesstrasse 15, 80992 Munich, Germany  
[www.epson-electronics.de](http://www.epson-electronics.de)

### Asia

---

#### Epson (China) Co., Ltd.

##### Headquarter

4F, Tower 1 of China Central Place, 81 Jianguo Street, Chaoyang District, Beijing, 100025 China  
[www.epson.com.cn/ed/](http://www.epson.com.cn/ed/)

##### Shanghai Branch

High-Tech Building 900, Yishan Road, Shanghai, 200233 China

##### Shenzhen Branch

Room 804-805, 8F, Tower 2, Ali Center, No.3332 Keyuan South Road, Shenzhen Bay, Nanshan District, Shenzhen, 518054 China

#### Epson Hong Kong Ltd.

Unit 715-723 7/F Trade Square, 681 Cheung Sha Wan Road, Kowloon,  
Hong Kong  
[www.epson.com.hk](http://www.epson.com.hk)

#### Epson Taiwan Technology & Trading Ltd.

15F, No.100, Songren Rd., Sinyi Dist., Taipei City, 11073 Taiwan  
[www.epson.com.tw/ElectronicComponent](http://www.epson.com.tw/ElectronicComponent)

#### Epson Singapore Pte., Ltd.

Electronic Devices Sales Division Alexandra Technopark Block B, #04-01/04 438B Alexandra Rd, Singapore 119968  
[www.epson.com.sg/electronic-devices](http://www.epson.com.sg/electronic-devices)

#### Epson Korea Co.,Ltd

10F Posco Tower Yeoksam, Teheranro 134 Gangnam-gu, Seoul, 06235, Korea  
[www.epson.co.kr](http://www.epson.co.kr)

#### Electronic devices information on WWW server

[www5.epsondevice.com/en/](http://www5.epsondevice.com/en/)

## X-ON Electronics

Largest Supplier of Electrical and Electronic Components

*Click to view similar products for [Real Time Clock](#) category:*

*Click to view products by [Epson](#) manufacturer:*

Other Similar products are found below :

[DS1302Z-LF](#) [710029X](#) [879047C](#) [405800G](#) [PT7C43390LE](#) [RV-3029-C2-32.768k-OPTION-B-TB-QA](#) [RV-2123-C2-32.768k-20PPM-TA-QA](#) [RV-3029-C2-32.768k-OPTION-A-TB-QA](#) [PT7C4563UEX](#) [RV-1805-C3-32.768k-2PPM-TA-QA](#) [RV-3029-C3-32.768k-OPTION-A-TB-QA](#) [RV-2123-C2-32.768kHz-20PPM-TA-QC](#) [RX8900SA UC3 PURE SN](#) [RX-4035LC:B3 PURE SN](#) [RX-8564LC:B PURE SN](#) [RX-8803LCUB PURE SN BULK](#) [MCP79401-I/SN](#) [BQ32002D](#) [MCP7940M-I/P](#) [DS3231SN#T&R](#) [DS1391U-18+](#) [DS1347T+T&R](#) [RX-8564LC:B3 PURE SN](#) [DS1338Z-33+T](#) [RX-4571SA:B3 PURE SN](#) [DS1340U-33+T&R](#) [RX-8571LC:B3 PURE SN](#) [S-35190A-J8T1U](#) [RX-8803LC:UB3 PURE SN](#) [S-35390A-T8T1](#) [AB1815-T3](#) [AB-RTCMC-32.768kHz-AIGZ-S7-T](#) [AB-RTCMC-32.768kHz-B5GA-S3-T](#) [AB-RTCMC-32.768kHz-B5ZE-S3-T](#) [AB-RTCMC-32.768kHz-EOA9-S3-D-B-T](#) [AB-RTCMC-32.768kHz-EOZ9-S3-D-B-T](#) [AB-RTCMC-32.768KHZ-EOZ9-S3-HAT](#) [AB-RTCMC-32.768kHz-ZIZE-S2-T](#) [DS1672U-33+](#) [DS1339AU+](#) [FM33256B-G](#) [DS1673E-5-LF](#) [DS1672U-3+](#) [HYM1307N](#) [HYM1302](#) [HYM1302N](#) [PCF8563N](#) [DS1302N](#) [ECS-RTC-3225-5609-TR](#) [ECS-RTC-3225-5699HS-TR](#)