

Refill instructions Epson T0611 | T0612 | T0613 | T0614 | T0615

Please carefully read these instructions before refilling your ink cartridges. Always carry out the ink refill process on a dirt resistant mat and have a moist cloth to hand to quickly remove any ink spillage. The instructions apply only to the ink cartridges referred to above. The syringe and ink should be kept away from children. We accept no responsibility for any damage caused by inadequate or incorrect actions carried out during the refilling process. The refilling of ink cartridges is carried out at your own risk. An empty ink cartridge of this type can be refilled with approximately 8 ml of ink.



In order to refill an ink cartridge, a syringe filled with ink is required. Open the cap of one of the enclosed ink holders, which also acts as a syringe. Now insert the enclosed blunt needle using a twisting motion into the opening. Hold the lower part of the ink holder with your thumb and forefinger and twist it counter clockwise into the appliance.



Then seal the ink outlet opening with an adhesive tape and place the ink cartridge in an upright position.



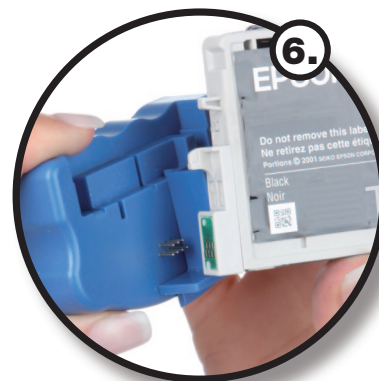
Next, using the tool provided, drill a hole approximately 7 mm deep through the designated opening. Drill carefully, as there are 2 inner walls to drill through.



Now insert the syringe into the newly made opening and fill the ink chamber slowly and carefully until just below the opening. Should some of the ink leak out, simply remove it by using the syringe.



Seal the newly drilled hole with an adhesive strip and then leave the ink cartridge for a few hours to allow the ink enough time to spread throughout the ink chamber.



Finally, the ink cartridge chip ink fluid level reading needs to be reset. In order to do this, press the reset device (not included with the refill kit set) pins against the ink cartridge chip contact. After removing the adhesive tape from the ink outlet area, the refilled ink cartridge can then be inserted into the printer. Please be aware of the possibility of ink leakage.

X-ON Electronics

Largest Supplier of Electrical and Electronic Components

Click to view similar products for [epson manufacturer](#):

Other Similar products are found below :

[MA-505 24.0000M-C3 ROHS](#) [MC-405 32.7680K-G3: ROHS](#) [FA-128 25.0000MF10Z-AC](#) [S5U13L02P00C100](#) [S5U13U11P00C100](#)
[SG5032CAN 10.000000M-TJGA3](#) [SG5032VAN 200.000000M-KEGA3](#) [SG-210STF 2.0480ML3](#) [SG-531P 7.3728MC:ROHS](#)
[X1G0044810005 SG7050CAN 10 MHZ](#) [S5U1C31W74T1300](#) [S5U1C17W04T2100](#) [IC Socket for 7050 case](#) [SG-210STF 40.0000ML](#) [TSX-3225 26.0000MF10Z-B6](#) [S5U13513P00C100](#) [SG-210STF 13.5600ML3](#) [SG5032CCN 16.000000M-HJGA3](#) [Q3851CA000055 XG-1000CA 50 MHZ](#) [EG-2121CA 644.53125MLGPA](#) [M160](#) [MA-506 4.0000M-C3 ROHS](#) [EG-2121CA2000000M-LGPAL3](#) [S5U13U00P00C100](#) [FA-118T 52.0000ME12Z-AC3](#) [SG-Writer-II](#) [S5U1C17001H3100](#) [S5U13513R00C100](#) [IC Socket for 5032 case](#) [SG-210STF 4.0960ML](#)
[S5U13517P00C200](#) [S5U13748P00C100](#) [S5U1C17W18T2100](#) [SG-310SCF 20.0000MM](#) [S5U13781R01C100](#) [Q336150110002 SG-615P 20 MHZ C](#) [MA-506 25.0000M-C3:ROHS](#) [S5U1C17M13T2100](#) [S5U1C17M13T1100](#) [TG-3541CE 32.7680KXB3](#) [FA-238 25.0000MB50X-C3](#) [RX-8803LC:UB3 PURE SN](#) [SG-3030LC 32.7680KB3, PURE SN](#) [SG-615P 8.0000MC3: ROHS](#) [Q3102JF010001 SG-3030JF 32.768KHZ B](#) [M150](#) [S5U1C17W15T2100](#) [FC-135 32.7680KA-K0](#) [XG-2121CA 156.2500M-PGSNB](#) [FA-128 25.0000MF20X-WX](#)