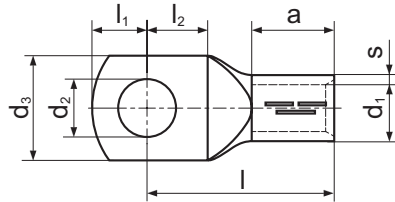


KCS Tubular terminal

for multi-wire Cu cables



Material: galvanically tinned copper
Non tinned on request.

| Cross section [mm ²] | For screw M | d ₂ [mm] | Symbol | s [mm] | d ₁ [mm] | d ₃ [mm] | a [mm] | l ₁ [mm] | l ₂ [mm] | l [mm] | Weight [g/pce] | Unit [pcs] | Dies discriminant | Crimping tools |
|----------------------------------|-------------|---------------------|------------|--------|---------------------|---------------------|--------|---------------------|---------------------|--------|----------------|------------|-------------------|--|
| 2,5 | 4 | 4,3 | KCS 4-2,5 | 0,95 | 2,3 | 7,5 | 7 | 5 | 6 | 17 | 1,66 | 100 | | |
| | 5 | 5,3 | KCS 5-2,5 | | | 8,5 | 7 | 5,5 | 6,2 | 17 | 1,70 | | | |
| | 6 | 6,4 | KCS 6-2,5 | | | 9,5 | 7 | 6,7 | 7,3 | 18 | 1,82 | | | |
| | 8 | 8,4 | KCS 8-2,5 | | | 13 | 7 | 7,3 | 10 | 22 | 2,05 | | | |
| 4 | 4 | 4,3 | KCS 4-4 | 1 | 3 | 8,5 | 8 | 5 | 6 | 19 | 2,30 | 50 | | PR33, PP19 |
| | 5 | 5,3 | KCS 5-4 | | | 9 | 8 | 5,5 | 6,2 | 19 | 2,30 | | | |
| | 6 | 6,4 | KCS 6-4 | | | 10 | 8 | 6,5 | 7,3 | 20 | 2,44 | | | |
| | 8 | 8,4 | KCS 8-4 | | | 13 | 8 | 9,5 | 10 | 23 | 2,90 | | | |
| 6 | 4 | 4,3 | KCS 4-6 | 1 | 4 | 9,5 | 9 | 5 | 6 | 20 | 3,26 | 50 | 6 | EPZC300, EPZ300, GZ300, HRZ300, PRZ240, PR33, GO300, HR300, GU300, GU120, HR100-U, PR240, PR50, PP19, A11/6 |
| | 5 | 5,3 | KCS 5-6 | | | 9,5 | 9 | 6 | 6,2 | 20 | 3,32 | | | |
| | 6 | 6,4 | KCS 6-6* | | | 11 | 9 | 6 | 7,5 | 21,5 | 3,48 | | | |
| | 8 | 8,4 | KCS 8-6 | | | 13 | 9 | 9,5 | 10 | 24 | 4,10 | | | |
| 10 | 5 | 5,3 | KCS 5-10 | 1,2 | 4,5 | 12 | 10 | 7,5 | 8 | 23 | 5,32 | 50 | 7 | EPZC300, EPZ300, GZ300, HRZ300, PRZ240, GO300, HR300, GU300, GU120, HR100-U, PR240, PR50, R50, PP19 |
| | 6 | 6,4 | KCS 6-10* | | | 12 | 9 | 6 | 7,5 | 22,5 | 5,54 | | | |
| | 8 | 8,4 | KCS 8-10* | | | 14 | 9 | 8 | 9 | 24,5 | 5,96 | | | |
| | 10 | 10,5 | KCS 10-10* | | | 16 | 9 | 10 | 11 | 27 | 6,36 | | | |
| 16 | 5 | 5,3 | KCS 5-16 | 1,5 | 5,5 | 13 | 13 | 8,2 | 8,2 | 28 | 9,96 | 50 | 8 | EPZC300, EPZ300, GZ300, HRZ300, PRZ240, GO300, HR300, GU300, GU120, HR100-U, PR240, PR50, R50, PP19 |
| | 6 | 6,4 | KCS 6-16* | | | 12,5 | 10 | 6 | 7,5 | 24 | 9,12 | | | |
| | 8 | 8,4 | KCS 8-16* | | | 14,5 | 10 | 8 | 9 | 26 | 10,06 | | | |
| | 10 | 10,5 | KCS 10-16* | | | 17 | 10 | 10 | 11 | 28 | 10,56 | | | |
| 25 | 6 | 6,4 | KCS 6-25* | 1,5 | 7 | 14 | 11 | 6 | 7,5 | 27 | 11,74 | 50 | 10 | PP19 + as below |
| | 8 | 8,4 | KCS 8-25* | | | 16 | 11 | 8 | 9 | 28 | 13,06 | | | |
| | 10 | 10,5 | KCS 10-25* | | | 18 | 11 | 10 | 11 | 31 | 15,56 | | | |
| | 12 | 13 | KCS 12-25 | | | 19 | 15 | 13 | 14 | 35 | 15,32 | | | |
| 35 | 6 | 6,4 | KCS 6-35* | 1,75 | 8,5 | 17 | 15 | 6 | 7,5 | 31,5 | 18,90 | 20 | 12 | EPZC300, EPZ300, GZ300, HRZ300, PRZ240, GO300, HR300, GU300, GU120, HR100-U, PR240, PR120, PR150, PR50, PP19, A11/6 |
| | 8 | 8,4 | KCS 8-35* | | | 17 | 15 | 8 | 9 | 33 | 20,35 | | | |
| | 10 | 10,5 | KCS 10-35* | | | 19 | 15 | 10 | 11 | 35 | 21,80 | | | |
| | 12 | 13 | KCS 12-35 | | | 21 | 17 | 13 | 14 | 38 | 23,15 | | | |
| | 14 | 15 | KCS 14-35 | | | 21 | 17 | 15,5 | 15,5 | 40 | 23,80 | | | |
| 50 | 8 | 8,4 | KCS 8-50* | 2 | 10 | 20 | 17 | 8 | 10 | 38,5 | 32,30 | 20 | 14 | EPZC300, EPZ300, GZ300, HRZ300, PRZ240, GO300, HR300, GU300, GU120, HR100-U, PR240, PR120, PR150, PR50, PP19, A11/6 |
| | 10 | 10,5 | KCS 10-50* | | | 20 | 17 | 10 | 11 | 39 | 31,25 | | | |
| | 12 | 13 | KCS 12-50* | | | 21 | 17 | 12 | 13 | 40,5 | 31,4 | | | |
| | 14 | 15 | KCS 14-50 | | | 23 | 19 | 15,5 | 15,5 | 43 | 32,70 | | | |
| | 16 | 17 | KCS 16-50 | | | 28 | 19 | 16 | 17 | 45 | 35,80 | | | |

KCS Tubular terminal

for multi-wire Cu cables

| Cross section [mm ²] | For screw M | d ₂ [mm] | Symbol | s [mm] | d ₁ [mm] | d ₃ [mm] | a [mm] | l ₁ [mm] | l ₂ [mm] | l [mm] | Weight [g/pce] | Unit [pcs] | Dies discriminant | Crimping tools |
|----------------------------------|-------------|---------------------|-------------|--------|---------------------|---------------------|--------|---------------------|---------------------|--------|----------------|------------|-------------------|--|
| 70 | 8 | 8,4 | KCS 8-70* | 2,25 | 12 | 23,5 | 17 | 8 | 10 | 40 | 47,55 | 20 | 16 | |
| | 10 | 10,5 | KCS 10-70* | | | 23,5 | 17 | 10 | 11 | 42 | 41,00 | | | |
| | 12 | 13 | KCS 12-70 | | | 23,5 | 13 | 14 | 46 | 47,20 | | | | |
| | 14 | 15 | KCS 14-70 | | | 23,5 | 15,5 | 15,5 | 48 | 49,65 | | | | |
| | 16 | 17 | KCS 16-70 | | | 28 | 16 | 17 | 50 | 49,70 | | | | |
| 95 | 8 | 8,4 | KCS 8-95 | 2,25 | 13,5 | 26 | 25 | 10 | 11 | 49 | 55,80 | 10 | 18 | EPZC300, EPZ300, GZ300, HRZ300, PRZ240, G0300, HR300, GU300, GU120, HR100-U, PR240, PR120, PR150 |
| | 10 | 10,5 | KCS 10-95* | | | 26 | 20 | 10 | 11 | 44 | 48,50 | | | |
| | 12 | 13 | KCS 12-95* | | | 26 | 20 | 12 | 13 | 47 | 59,70 | | | |
| | 14 | 15 | KCS 14-95 | | | 26 | 25 | 15,5 | 15,5 | 53 | 59,20 | | | |
| | 16 | 17 | KCS 16-95 | | | 28 | 25 | 16 | 17 | 55 | 59,80 | | | |
| | 20 | 21 | KCS 20-95 | | | 34 | 25 | 19 | 20 | 57 | 69,80 | | | |
| 120 | 8 | 8,4 | KCS 8-120 | 2,25 | 15,5 | 29 | 26 | 10 | 11 | 51 | 64,70 | 10 | 19 | HR100-U, PR240, PR120, PR150 |
| | 10 | 10,5 | KCS 10-120* | | | 29 | 23 | 10 | 11 | 51 | 68,40 | | | |
| | 12 | 13 | KCS 12-120* | | | 29 | 23 | 12 | 13 | 53 | 72,80 | | | |
| | 14 | 15 | KCS 14-120 | | | 29 | 26 | 15,5 | 15,5 | 56 | 72,80 | | | |
| | 16 | 17 | KCS 16-120 | | | 29 | 26 | 16 | 17 | 58 | 72,30 | | | |
| | 20 | 21 | KCS 20-120 | | | 35 | 26 | 19 | 20 | 61 | 78,40 | | | |
| 150 | 10 | 10,5 | KCS 10-150 | 2,25 | 17 | 31 | 28 | 12 | 13 | 57 | 83,00 | 10 | 20 | EPZC300, EPZ300, GZ300, HRZ300, PRZ240, G0300, HR300, GU300, PR240, PR150 |
| | 12 | 13 | KCS 12-150 | | | 31 | 28 | 13 | 14 | 58 | 81,60 | | | |
| | 14 | 15 | KCS 14-150 | | | 31 | 30 | 15,5 | 15,5 | 62 | 76,40 | | | |
| | 16 | 17 | KCS 16-150 | | | 31 | 30 | 16 | 17 | 62 | 93,50 | | | |
| | 20 | 21 | KCS 20-150 | | | 36 | 30 | 19 | 20 | 66 | 96,70 | | | |
| 185 | 10 | 10,5 | KCS 10-185 | 2,5 | 19 | 35 | 30 | 12 | 13 | 62 | 105,00 | 10 | 23 | PR240, PRZ240 + as below |
| | 12 | 13 | KCS 12-185 | | | 35 | 30 | 13 | 14 | 63 | 112,00 | | | |
| | 14 | 15 | KCS 14-185 | | | 35 | 30 | 15,5 | 15,5 | 65 | 110,80 | | | |
| | 16 | 17 | KCS 16-185 | | | 35 | 30 | 16 | 17 | 67 | 112,00 | | | |
| | 20 | 21 | KCS 20-185 | | | 39 | 30 | 19 | 20 | 69 | 118,20 | | | |
| 240 | 10 | 10,5 | KCS 10-240 | 2,5 | 21,5 | 39 | 35 | 12 | 13 | 66 | 125,00 | 10 | 25 | EPZC300, EPZ300, GZ300, HRZ300, PRZ240, G0300, HR300, GU300 |
| | 12 | 13 | KCS 12-240 | | | 39 | 30 | 12 | 13 | 65 | 120,00 | | | |
| | 14 | 15 | KCS 14-240 | | | 39 | 35 | 15,5 | 15,5 | 68 | 123,20 | | | |
| | 16 | 17 | KCS 16-240 | | | 39 | 35 | 16 | 17 | 70 | 135,00 | | | |
| | 20 | 21 | KCS 20-240 | | | 39 | 35 | 19 | 20 | 73 | 140,60 | | | |
| 300 | 12 | 13 | KCS 12-300 | 3 | 24,5 | 45 | 45 | 13 | 14 | 80 | 195,00 | 10 | 30 | HR300, GU300 |
| | 14 | 15 | KCS 14-300 | | | 45 | 45 | 15,5 | 15,5 | 81 | 211,05 | | | |
| | 16 | 17 | KCS 16-300 | | | 45 | 45 | 16 | 17 | 83 | 205,00 | | | |
| | 20 | 21 | KCS 20-300 | | | 45 | 45 | 19 | 20 | 86 | 217,80 | | | |
| 400 | 12 | 13 | KCS 12-400 | 3,5 | 27 | 49 | 44 | 24 | 24 | 92 | 335,00 | 5 | 34 | GU625 |
| | 14 | 15 | KCS 14-400 | | | 49 | 44 | 24 | 24 | 92 | 285,00 | | | |
| | 16 | 17 | KCS 16-400 | | | 49 | 44 | 24 | 24 | 92 | 345,83 | | | |
| | 20 | 21 | KCS 20-400 | | | 49 | 44 | 24 | 24 | 92 | 281,00 | | | |

Production on request. Terminal with control hole - symbol KCS-K.

X-ON Electronics

Largest Supplier of Electrical and Electronic Components

Click to view similar products for [Terminals](#) category:

Click to view products by [Erko](#) manufacturer:

Other Similar products are found below :

[00-054007-01074-6](#) [00-054007-70206-1](#) [00-054007-70210-8](#) [00-054007-70217-7](#) [00-054007-70228-3](#) [00-054007-70256-6](#) [00-054007-70316-7](#) [00-054007-49560-4](#) [00-054007-70209-2](#) [00-054007-70231-3](#) [00-054007-70241-2](#) [00-054007-70242-9](#) [00-054007-70246-7](#) [00-054007-70263-4](#) [00-054007-70288-7](#) [00-054007-70290-0](#) [00-054007-70300-6](#) [00-054007-70304-4](#) [01-2900-1-04412](#) [600TS-10](#) [605601-1](#) [60617-1-C](#) [61314-6-C](#) [61810-3](#) [626-0194](#) [63-S](#) [M55155/079C01](#) [M55155/099B03](#) [M55155/109H01](#) [M55155/29XJ08](#) [M55155/30-6S](#) [M55155/30-9S](#) [M55155/30XI09](#) [M6-14RSX](#) [696683-1](#) [696861-1](#) [696999-1](#) [D18-110B-C](#) [D18-110B-M](#) [701-1936](#) [701-1955](#) [701-2003](#) [701-2007](#) [701-2013](#) [701-2018](#) [701-2069](#) [701-2077-60](#) [701-2315](#) [701-2430](#) [701-2480](#)