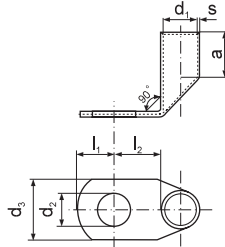
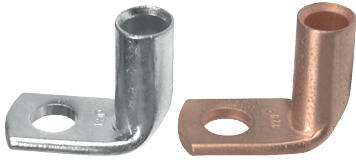


KCS90 Tubular angle terminal

for multi-wire Cu cables



Material: galvanically tinned copper
Non tinned on request.

Cross section [mm ²]	For screw M	d ₂ [mm]	Symbol	s [mm]	d ₁ [mm]	d ₃ [mm]	a [mm]	l ₁ [mm]	l ₂ [mm]	Weight [g/pce]	Unit [pcs]	Dies discriminant	Crimping tools				
6	5	5,3	KCS90 5-6	1	4	9,5	9	8	8,5	4,00	10	6	EPZC300, EPZ300, GZ300, HRZ300, PRZ240, PR33, GO300, HR300, GU300, GU120, HR100-U, PR240, PR50, PP19, A11/6				
	6	6,4	KCS90 6-6											10	7,5	11	4,30
10	5	5,3	KCS90 5-10	1,2	4,5	12	10	8	8,5	6,10	10	7	EPZC300, EPZ300, GZ300, HRZ300, PRZ240, GO300,				
	6	6,4	KCS90 6-10											12	7,5	11	6,40
	8	8,4	KCS90 8-10											13	10	13	5,90
16	6	6,4	KCS90 6-16	1,5	5,5	13	13	7,5	11	10,10	10	8	HR300, GU300, GU120, HR100-U, PR240, PR50, R50, PP19				
	8	8,4	KCS90 8-16											13	10	13	10,50
	10	10,5	KCS90 10-16											17	12	15	13,50
25	6	6,4	KCS90 6-25	1,5	7	14	15	7,5	11	13,80	10	10	PP19 + as below				
	8	8,4	KCS90 8-25											16	10	13	14,60
	10	10,5	KCS90 10-25											18	12	15	16,20
	12	13	KCS90 12-25											18	13	18	18,20
35	6	6,4	KCS90 6-35	1,75	8,5	17	17	7,5	11	21,00	10	12	EPZC300, EPZ300, GZ300, HRZ300, PRZ240, GO300,				
	8	8,4	KCS90 8-35											17	10	13	23,10
	10	10,5	KCS90 10-35											19	12	15	23,60
	12	13	KCS90 12-35											21	13	18	25,70
	14	15	KCS90 14-35											21	15,5	20	26,70
50	8	8,4	KCS90 8-50	2	10	20	19	10	13	32,60	10	14	HR300, GU300, GU120, HR100-U, PR240, PR120, PR150, PR50, PP19, A11/6				
	10	10,5	KCS90 10-50											20	12	15	34,20
	12	13	KCS90 12-50											23	13	18	40,20
	14	15	KCS90 14-50											23	15,5	20	40,20
	16	17	KCS90 16-50											28	16	22	46,80
70	8	8,4	KCS90 8-70	2,25	12	23,5	21	10	13	48,30	10	16	EPZC300, EPZ300, GZ300, HRZ300, PRZ240, GO300,				
	10	10,5	KCS90 10-70											23,5	12	15	50,80
	12	13	KCS90 12-70											23,5	13	18	53,10
	14	15	KCS90 14-70											23,5	15,5	20	60,90
	16	17	KCS90 16-70											28	16	22	61,00
95	10	10,5	KCS90 10-95	2,25	13,5	26	25	12	18	66,63	10	18	EPZC300, EPZ300, GZ300, HRZ300, PRZ240, GO300, HR300, GU300, GU120, HR100-U, PR240, PR120, PR150				
	12	13	KCS90 12-95											26	13	18	63,53
	14	15	KCS90 14-95											26	15,5	20	68,40
	16	17	KCS90 16-95											30	16	22	73,59
	20	21	KCS90 20-95											35	19,5	24	71,61
120	10	10,5	KCS90 10-120	2,25	15,5	29	26	12	15	72,61	10	19	PR240, PR120, PR150				
	12	13	KCS90 12-120											29	13	18	80,00
	14	15	KCS90 14-120											29	15,5	20	87,90
	16	17	KCS90 16-120											30	16	22	83,65
	20	21	KCS90 20-120											35	19	24	86,52
150	10	10,5	KCS90 10-150	2,25	17	31	30	12	15	90,00	10	20	EPZC300, EPZ300, GZ300, HRZ300, PRZ240, GO300, HR300, GU300, PR240, PR150				
	12	13	KCS90 12-150											31	13	18	88,96
	14	15	KCS90 14-150											31	15,5	20	93,90
	16	17	KCS90 16-150											31	16	22	96,70
	20	21	KCS90 20-150											36	19	24	99,80
185	10	10,5	KCS90 10-185	2,5	19	35	30	12	22	119,50	10	23	PR240, PRZ240, + as below				
	12	13	KCS90 12-185											35	13	22	122,70
	14	15	KCS90 14-185											35	15,5	22	124,20
	16	17	KCS90 16-185											35	16	22	120,00
	20	21	KCS90 20-185											39	19	24	129,90
240	12	13	KCS90 12-240	2,5	21,5	39	35	13	22	150,00	10	25	EPZC300, EPZ300, GZ300, HRZ300, PRZ240, GO300,				
	14	15	KCS90 14-240											39	15,5	22	146,70
	16	17	KCS90 16-240											39	16	22	148,20
	20	21	KCS90 20-240											39	19	24	150,30
300	12	13	KCS90 12-300	3	24,5	45	44	13	22	238,00	10	30	HR300, GU300				
	16	17	KCS90 16-300											45	16	22	241,10
	20	21	KCS90 20-300											45	19	24	244,80
400	12	13	KCS90 12-400	3,5	27	49	44	24	24	343,40	10	34	GU625				
	14	15	KCS90 14-400											49	24	24	342,90
	16	17	KCS90 16-400											49	24	24	342,40
	20	21	KCS90 20-400											49	24	24	341,10

Production on request. Terminals of dimensions other than in chart.

X-ON Electronics

Largest Supplier of Electrical and Electronic Components

Click to view similar products for [Terminals](#) category:

Click to view products by [Erko](#) manufacturer:

Other Similar products are found below :

[00-054007-01074-6](#) [00-054007-70206-1](#) [00-054007-70210-8](#) [00-054007-70217-7](#) [00-054007-70228-3](#) [00-054007-70256-6](#) [00-054007-70316-7](#) [00-054007-49560-4](#) [00-054007-70209-2](#) [00-054007-70231-3](#) [00-054007-70241-2](#) [00-054007-70242-9](#) [00-054007-70246-7](#) [00-054007-70263-4](#) [00-054007-70288-7](#) [00-054007-70290-0](#) [00-054007-70300-6](#) [00-054007-70304-4](#) [01-2900-1-04412](#) [00581P0075](#) [600TS-10](#) [605601-1](#) [60598-1-CUT-TAPE](#) [60617-1-C](#) [61314-6-C](#) [61810-3](#) [62149-1](#) [626-0194](#) [63-S](#) [M55155/059I03](#) [M55155/079C01](#) [M55155/099B03](#) [M55155/099H02](#) [M55155/109H01](#) [M55155/12XH05](#) [M55155/29XJ08](#) [M55155/30-6S](#) [M55155/30-9S](#) [M55155/30XI09](#) [M6-14RSX](#) [696683-1](#) [696861-1](#) [696999-1](#) [M86700006](#) [D18-110B-C](#) [D18-110B-M](#) [701-1936](#) [701-1955](#) [701-2003](#) [701-2007](#)