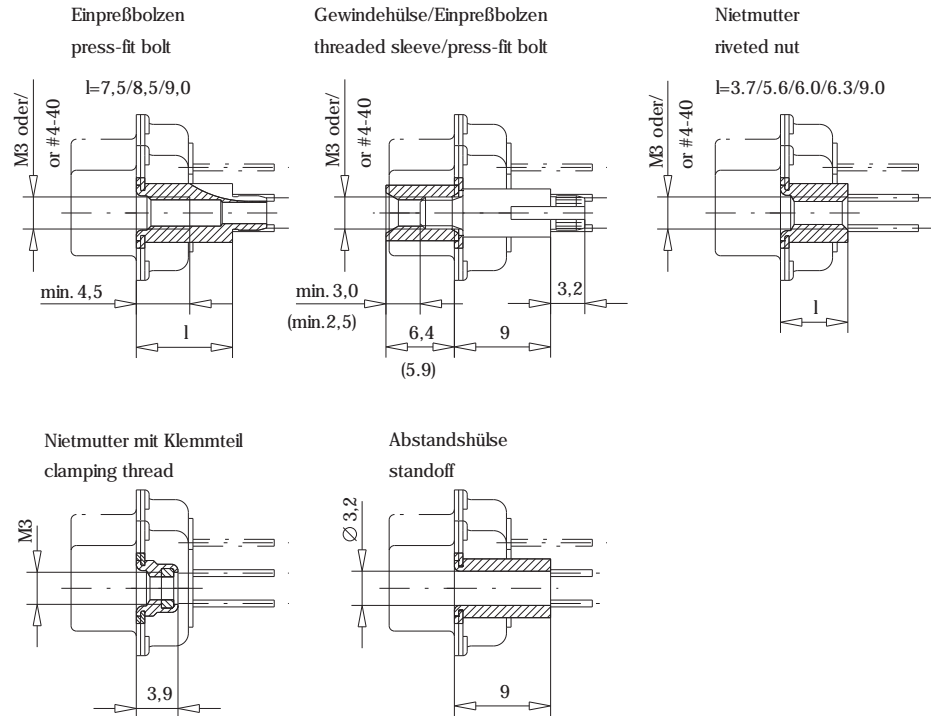
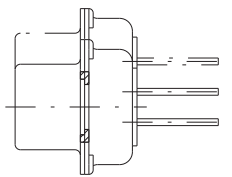


Schnitt A-A  
cross-section A.-A



Schichtaufbau im metallisierten Loch für Einpressbolzen  
siehe Zeichnung 114109  
metal plating of plated-through hole for press-fit bolt  
see drawing 114109

\* bei LP-Dicke von 1,6 mm / for PCB-thickness of 1,6 mm

	9	30.8	16.4	25.0	8.0	12.5	11.0	6.3	19.3	10.8		0.8		
	15	39.1	24.7	33.3	8.0	12.5	11.0	6.3	27.5	10.8		0.8		
	25	53.0	38.5	47.0	8.0	12.5	11.0	6.3	41.3	10.8		0.8		
	37	69.3	54.9	63.5	8.0	12.5	11.0	6.3	57.7	10.8		0.8		
	50	67.0	52.5	61.1	10.8	15.4	11.0	6.3	55.3	13.6		0.8		
Polzahl/ No. of contacts	A	B	C	D	E	F	G	H	J	L				
	±0.3	-0.2	±0.2	-0.2	±0.3	±0.2	-0.3	±0.3	±0.2	±0.1				

Ident-Nr. / Part No. : Refer to table on page 2

Polzahl / No. of contacts : Refer to table on page 2

Anschlußart / Terminal Type : Pressfit, Pressfit zone EE 2.5 mm

Anschlußlänge / Terminal Length : 3.2 mm

Bauart / Type : 5

Anforderungsstufe / Class : 207=0.8µm (30 µin) Au CONTACT, TIN/LEAD TERMINAL

Aufdruck / Logo : ERNI

Zubehör / Accessory : Refer to table on page 2

Sonderausführung / Special : Refer to table on page 2

Fehlende Masse und Angaben siehe DIN 41652 / Missing information and dimensions according to DIN 41652  
Sonstige Angaben siehe Fertigungsunterlagen / Additional indications please see the production documentation

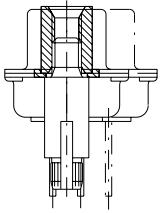
Information:	Tolerances 	Scale 2:1
All rights reserved. Only for information. To insure that this is the latest version of this drawing, please contact one of the ERNI companies before using.	Subject to modification without prior notice. Drawing will not be updated.	Designation <b>TMC-S 9 bis 50-EE25-7.5</b> <b>TMC-S 9 to 50-EE25-7.5</b>
	Elektroapparate GmbH D-73099 ADELBERG	<b>054886</b>
e	05.09.2000	
Index	Date	M.00021091.SZN
		TMCS

Consider protection memo from DIN 54



Accessory Termination Side: Pressfit bolt #4-40

104125	104126	104127	104480	104128
--------	--------	--------	--------	--------

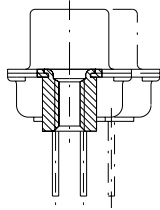


Accessory Mating Side: Threaded sleeve M3    Accessory Termination Side: Pressfit bolt

114075	114076	114077	114078	114079
--------	--------	--------	--------	--------

Accessory Mating Side: Threaded sleeve #4-40    Accessory Termination Side: Pressfit bolt

114080	114081	114082	114083	114084
--------	--------	--------	--------	--------



Accessory Termination Side: Rivet nut M3

104989	114091	063689	063690	114094
--------	--------	--------	--------	--------

Accessory Termination Side: Rivet nut #4-40

114095	114096	114097	114098	114099
--------	--------	--------	--------	--------

## X-ON Electronics

Largest Supplier of Electrical and Electronic Components

*Click to view similar products for [D-Sub Standard Connectors](#) category:*

*Click to view products by [ERNI](#) manufacturer:*

Other Similar products are found below :

[56F711-015](#) [012-9507-004](#) [LV242999-142T12](#) [015-0341-000](#) [015-0349-000](#) [015-0372-005](#) [015-0372-008](#) [015-8755-001](#) [020419-0104](#) [012-0467-000](#) [012-0515-000](#) [012-9507-034](#) [012-9507-114](#) [020745-0008](#) [609-25P](#) [M24308/2-23Z](#) [CT2-14S-2PCA34](#) [CT2-18-11PCAU](#) [CT2-36-15SC](#) [CT6-14S-2SC](#) [CT6E14SA7SC](#) [CT6E22-14PC](#) [CT6E22-14PS](#) [CT6E22-22PS](#) [M83513/01-FC](#) [M85049/48-3-2F](#) [6STD09PCM99B70X](#) [6STD09SCM99B30X](#) [6STD09SCT99S40X](#) [6STD15PCT99S40X](#) [6STD15SCM99B30X](#) [6STD15SCT99S40X](#) [6STF09PCM05B70X](#) [7-135760-9](#) [MC11E-10-6SN](#) [747552-3](#) [MD1-21PS](#) [MDM-15SCBRM7-F222](#) [MDM96517-699](#) [MDM96521-744](#) [MDVB1-21SL1](#) [MIK0-1-7SH003](#) [MIKQ6-7SH076](#) [MIKQ7-7PH077](#) [MIKQ7-7PH11](#) [MIKQ7-7PH32](#) [MIKQ9-7PH003](#) [MJSV-28SL61](#) [MKJ4A1F14-55S](#) [8-135760-3](#)