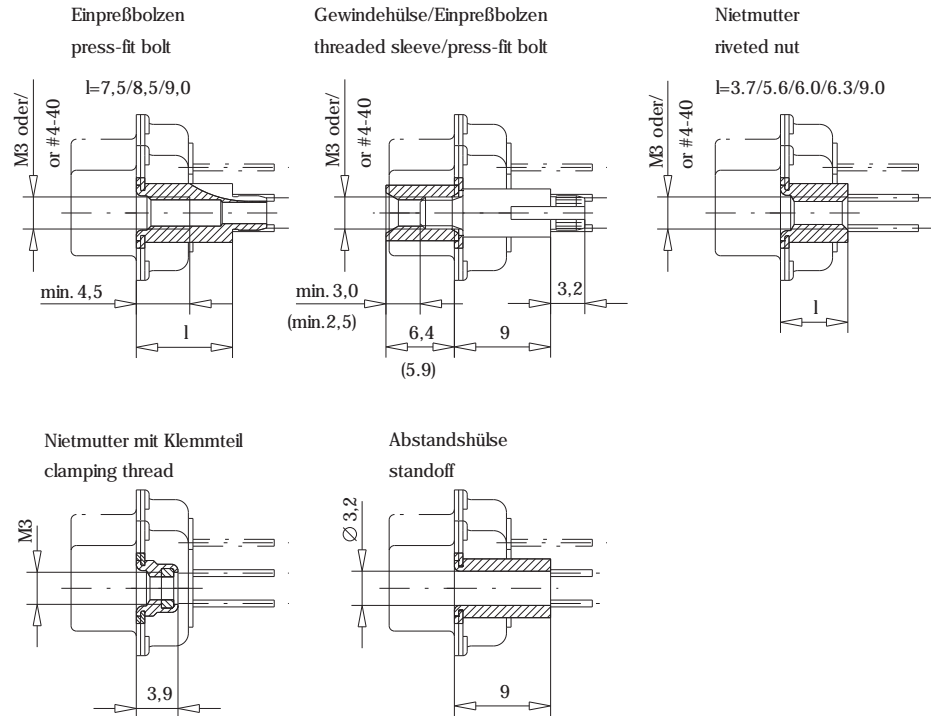
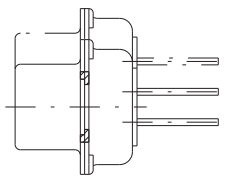


Schnitt A-A
cross-section A.-A



Schichtaufbau im metallisierten Loch für Einpressbolzen
siehe Zeichnung 114109
metal plating of plated-through hole for press-fit bolt
see drawing 114109

* bei LP-Dicke von 1,6 mm / for PCB-thickness of 1,6 mm

	9	30.8	16.4	25.0	8.0	12.5	11.0	6.3	19.3	10.8		0.8		
	15	39.1	24.7	33.3	8.0	12.5	11.0	6.3	27.5	10.8		0.8		
	25	53.0	38.5	47.0	8.0	12.5	11.0	6.3	41.3	10.8		0.8		
	37	69.3	54.9	63.5	8.0	12.5	11.0	6.3	57.7	10.8		0.8		
	50	67.0	52.5	61.1	10.8	15.4	11.0	6.3	55.3	13.6		0.8		
Polzahl/ No. of contacts	A	B	C	D	E	F	G	H	J	L				
	±0.3	-0.2	±0.2	-0.2	±0.3	±0.2	-0.3	±0.3	±0.2	±0.1				

Ident-Nr. / Part No. : Refer to table on page 2

Polzahl / No. of contacts : Refer to table on page 2

Anschlußart / Terminal Type : Pressfit, Pressfit zone EE 2.5 mm

Anschlußlänge / Terminal Length : 3.2 mm

Bauart / Type : 5

Anforderungsstufe / Class : 207=0.8µm (30 µin) Au CONTACT, TIN/LEAD TERMINAL

Aufdruck / Logo : ERNI

Zubehör / Accessory : Refer to table on page 2

Sonderausführung / Special : Refer to table on page 2

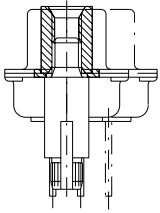
Fehlende Masse und Angaben siehe DIN 41652 / Missing information and dimensions according to DIN 41652
Sonstige Angaben siehe Fertigungsunterlagen / Additional indications please see the production documentation

Information:	Tolerances 	Scale 2:1
All rights reserved. Only for information. To insure that this is the latest version of this drawing, please contact one of the ERNI companies before using.		Designation TMC-S 9 bis 50-EE25-7.5 TMC-S 9 to 50-EE25-7.5
Elektroapparate GmbH D-73099 ADELBERG		054886
e	05.09.2000	
Index	Date	M.00021091.SZN
		TMCS



Accessory Termination Side: Pressfit bolt #4-40

104125	104126	104127	104480	104128
--------	--------	--------	--------	--------

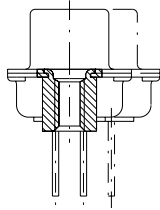


Accessory Mating Side: Threaded sleeve M3 Accessory Termination Side: Pressfit bolt

114075	114076	114077	114078	114079
--------	--------	--------	--------	--------

Accessory Mating Side: Threaded sleeve #4-40 Accessory Termination Side: Pressfit bolt

114080	114081	114082	114083	114084
--------	--------	--------	--------	--------



Accessory Termination Side: Rivet nut M3

104989	114091	063689	063690	114094
--------	--------	--------	--------	--------

Accessory Termination Side: Rivet nut #4-40

114095	114096	114097	114098	114099
--------	--------	--------	--------	--------

X-ON Electronics

Largest Supplier of Electrical and Electronic Components

Click to view similar products for [D-Sub Standard Connectors](#) category:

Click to view products by [ERNI](#) manufacturer:

Other Similar products are found below :

[56F711-015](#) [012-9507-004](#) [LV242999-142T12](#) [015-0341-000](#) [015-0349-000](#) [015-0372-005](#) [015-0372-008](#) [015-8755-001](#) [020419-0104](#) [012-0467-000](#) [012-0515-000](#) [012-9507-034](#) [012-9507-114](#) [020745-0008](#) [609-25P](#) [CT2-14S-2PCA34](#) [CT2-18-11PCAU](#) [CT2-36-15SC](#) [CT6-14S-2SC](#) [CT6E14SA7SC](#) [CT6E22-14PC](#) [CT6E22-14PS](#) [CT6E22-22PS](#) [M83513/01-FC](#) [M85049/48-3-2F](#) [6STD09PCM99B70X](#) [6STD09SCM99B30X](#) [6STD09SCT99S40X](#) [6STD15PCT99S40X](#) [6STD15SCM99B30X](#) [6STD15SCT99S40X](#) [6STF09PCM05B70X](#) [7-135760-9](#) [MC11E-10-6SN](#) [747552-3](#) [MD1-21PS](#) [MDM-15SCBRM7-F222](#) [MDM96517-699](#) [MDM96521-744](#) [MDVB1-21SL1](#) [MIK0-1-7SH003](#) [MIKQ6-7SH076](#) [MIKQ7-7PH077](#) [MIKQ7-7PH11](#) [MIKQ7-7PH32](#) [MIKQ9-7PH003](#) [MJSV-28SL61](#) [MKJ4A1F14-55S](#) [8-135760-3](#) [8STD09PCM99B30X](#)