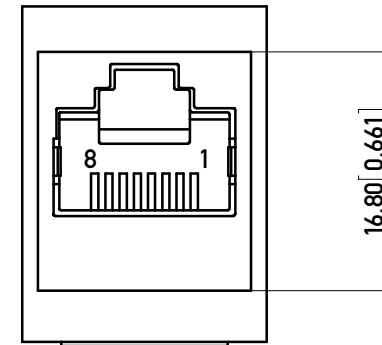
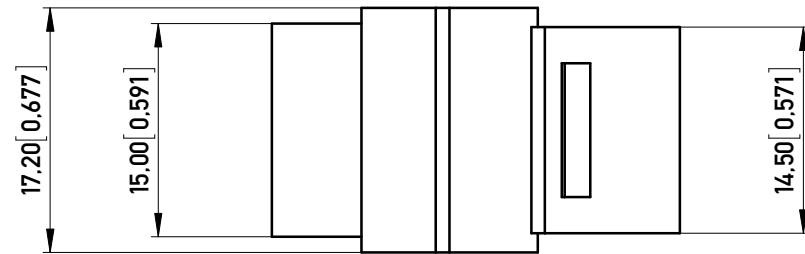
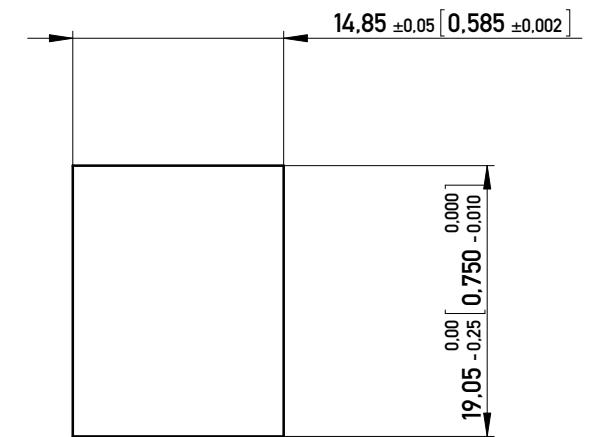
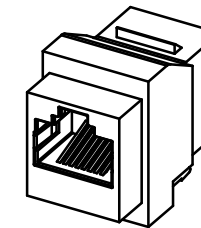
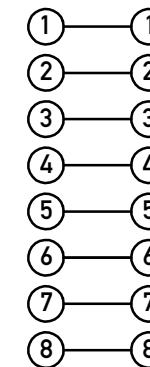


RECOMMENDED PANEL CUTOUT  
EMPFOHLENER FRONTPLATTEN-AUSSCHNITT



WIRING DIAGRAM



1:1

Technical specifications

Materials & Finish	Standard applic.	Value
Insulation body	Standard description	PBT 30%
Contact material	Standard description	C5210 (acc.JIS)
Contact finish, mating zone	Thickness of plating	50 µinAu over 50 µin Ni
Shell/shield material	Standard description	C2680 (acc.JIS)
Shell/shield plating	Thickness of plating	50 µin Ni

Packaging	Bag
-----------	-----

Approvals	Standard	Value
UL insulation body	UL 94	V0
UL File No.		E145613
RoHS compliant		Yes

Test Data	Standard applic.	Value
<b>Mechanical properties</b>		
Insertion/withdrawal force	IEC 603-7	max. 20 N
Mechanical operations	IEC 512-5, 9a	min 1.000
Effectiveness of connector coupling device	IEC 512-8, 15f	50 N

Electrical properties		
<b>Creepage / clearance distances</b>		
a)Contact - contact	IEC807-3	0.52 mm
b)Contact - shell	IEC807-3	min. 1.0 mm
<b>Voltage proof (Dielectric Withstand Voltage)</b>		
a)Contact - contact	IEC512-2, 4a	min. 1.000 VDC/VAC
b)Contact - shell/testpanel	IEC512-2, 4a	min. 1.500 VDC/VAC
Current carrying capacity	IEC512-3, 5b	1.5 A @ 25° C
Contact resistance	IEC512-2, 2a	max. 30 mOhm
Insulation resistance	IEC512-2, 3a	min. 500 MOhm

Environmental properties	
Operation temperature	-40 to +70° C

NOTE 1 : RECOMMENDED PANEL THICKNESS 1.6 mm [0.062"]  
NOTE 2 : RoHS COMPLIANT

Information:	Tolerances x.x ±0,38 x.xx ±0,25	All Dimensions in mm [in]	Scale <b>2:1</b>
All rights reserved. Only for Information. To ensure that this is the latest version of this drawing, please contact one of the ERNI companies before using.	Subject to modification without prior notice. Drawing will not be updated.	Designation <b>MOD JACK MJC</b> <b>INLINE COUPLER, CAT 5 e</b>	
www.ERNI.com		<b>133513</b>	I (1/1) <b>A3</b>
c	29.02.2012	Class MJ	
Index	Date		

Copyright by ERNI GmbH  
Proprietary notice pursuant to ISO 16016 to be observed.

## X-ON Electronics

Largest Supplier of Electrical and Electronic Components

*Click to view similar products for [Modular Connectors / Ethernet Connectors](#) category:*

*Click to view products by [ERNI](#) manufacturer:*

Other Similar products are found below :

[8949-H88/06BLKA/SN](#) [74441-0010/BKN](#) [MP1010RX-1000](#) [MP44RX-1000](#) [PHJ-4P4C-1-V-4](#) [PHP-6P6C-5](#) [GAX-3-66](#) [GAX-8-62](#) [GDCX-PA-66-50](#) [GDCX-PN-64](#) [GDCX-PN-66](#) [GDCX-PN-66-50](#) [GDLX-A-66](#) [GDLX-N-66](#) [GDLX-S-66](#) [GDLX-S-88K](#) [GDLX-SMT-S-88](#) [GDTX-S-88-50](#) [GDX-PA-1010](#) [GLX-N-1010M-BLK](#) [GLX-S-88M-BLK](#) [GMX-N-1010](#) [GMX-S-1010](#) [GMX-S-66](#) [GMX-SMT4-N-88](#) [GPX-2-64](#) [GSGX-N-2-88](#) [GSGX-N-4-88](#) [GSX-NS2-88-3.05](#) [GSX-NS2-88-3.05-50](#) [GSX-NS-88-3.05-50](#) [PT-108A-8C-UL](#) [PT-J951-8C](#) [PTS-J531-8CS-50UL](#) [1-1775629-2](#) [A-2014-0-4](#) [GWLX-S-88-GR](#) [GWLX-S9-88-YG](#) [DC-1021-8-WH-6](#) [1300530003](#) [1324640-4](#) [RJ11FTVC2G](#) [RJ11FTVC2N](#) [RJFTVX2SA1G](#) [132764-001](#) [1413235](#) [MP88X-1000](#) [MPS88RX-5000](#) [E5288-S000K3-L](#) [E5908-15A242-L](#)