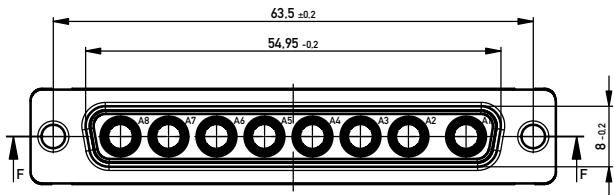
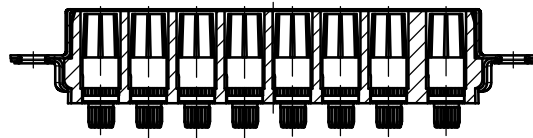
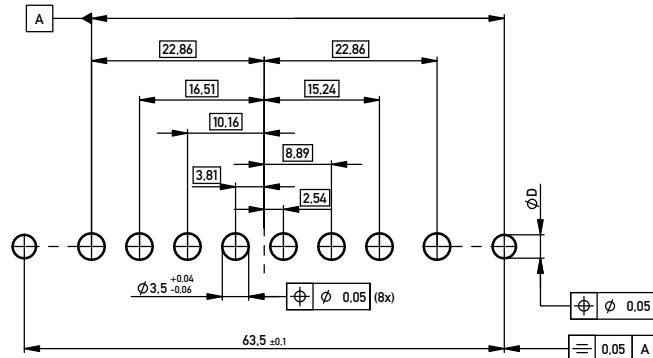


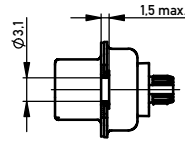
SCHNITT F-F



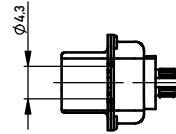
Layoutvorschlag  
recommended layout



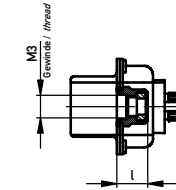
Gehäuse genietet  
riveted housing



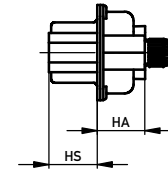
Gehäuse geklammert  
clamped housing



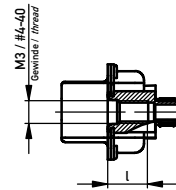
- / Nietmutter mit Polyamid-Klemmring  
- / clinchnut selflocking



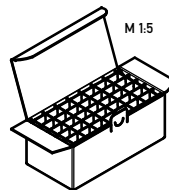
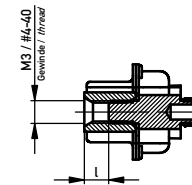
Zubehör Steckseite / Zubehör Anschlussseite  
accessories mating side / accessories terminal side



- / Einpressbolzen  
- / pressfit bolt



Gewindehülse / Einpressbolzen  
threaded spacer / pressfit bolt



Verpackung: Karton 084116 und Gefache 084110  
packaging: box 084116 and separator 084110

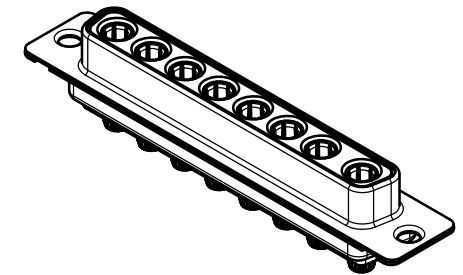
Verpackungseinheit: 35 St.  
packaging unit: 35 pcs.

Fehlende Masse und Angaben siehe IEC 807-2 (DIN 41652) und DIN 41626-1  
Missing information and dimensions according to IEC 807-2 (DIN 41652) and DIN 41626-1

Sonstige Angaben siehe Fertigungsunterlagen  
Additional indications according to production documentation

Schichtaufbau im metallisierten Loch siehe Zeichnung 164062  
metal plating of plated-through hole according to drawing 164062

Gewindehülse: Maß HS optional 6.4 oder 5.9  
threaded spacer/pressfit bolt: dimension HS optional 6.4 or 5.9



Gehäuse geklammert clamped housing		-	-	-	-	Ø 4,3	-	-	-	35
Gehäuse genietet riveted housing		-	-	-	-	Ø 3,1	-	-	-	35
Nietmutter mit Polyamid-Klemmring clinchnut self-locking		-	-	-	-	M3	4,2	4,2	3,2±0,1	35
Einpressbolzen pressfit bolt	134463	1				M3	4,5	6,3	3,1 <sup>+0,04</sup> <sub>-0,06</sub>	35
						#4-40				
Gewindehülse / Einpressbolzen threaded spacer / pressfit bolt	134517	1	#4-40	3	6,4	#4-40		6,3	3,1 <sup>+0,04</sup> <sub>-0,06</sub>	35
						M3				
Zubehör accessories	Ident.-Nr. part-no.	Anford.-stufe class	Gewinde Zubehör Steckseite accessories mating side	Gewinde- tiefe depth of thread	HS Einbaummaß Steckseite mounting height terminal side	Gewinde Zubehör Anschlussseite accessories terminal side	Gewinde- tiefe depth of thread	HA Einbaummaß Anschlussseite mounting height terminal side	D Layout layout	VPE

Information: Tolerances: Scale: 2:1  
All Dimensions in mm

All rights reserved. Only for Information. To ensure that this is the latest version of this drawing, please contact one of the ERNI companies before using.

Subject to modification without prior notice. Drawing will not be updated.

Designation: TMC-S 8W8 EP36 6.3  
TMC-S 8W8 EP36 6.3

054991

www.ERNI.com

28.01.2015

Index: Date: Class: TMC

## X-ON Electronics

Largest Supplier of Electrical and Electronic Components

*Click to view similar products for [D-Sub Standard Connectors](#) category:*

*Click to view products by [ERNI](#) manufacturer:*

Other Similar products are found below :

[DCM37S732N](#) [DAM15P500](#) [DEV09S364GTLF](#) [DEM09P032N](#) [DDM50P732N](#) [DAM15S332N](#) [173109-2218](#) [173109-2466](#) [173109-2436](#)  
[173109-2435](#) [56F706-005-LI](#) [56F711-015](#) [015-0341-000](#) [015-0372-008](#) [015-8544-011](#) [017041-0005](#) [020419-0104](#) [012-0515-000](#) [012-9507-](#)  
[034](#) [012-9507-114](#) [012-9534-001](#) [020745-0008](#) [609-25P](#) [M24308/2-23Z](#) [M243082310F](#) [M243082410F](#) [M243082411F](#) [M24308/4-21](#)  
[CT1A18-11PSA206](#) [CT1N36-5SC](#) [CT2-16S-17PS](#) [CT2-20-15PCAU](#) [CT2-24-12PS](#) [CT2-24-28PSF127A206](#) [CT2-32-9PC](#) [CT6F9767-14-4-](#)  
[14S-5PC](#) [CT6FA10SL-4PS](#) [CT7-18-10SC](#) [CT7-18-10SCAU](#) [CT7-18-12SCAU](#) [CT7-18-1PC](#) [CT7-18-1PCAU](#) [CT7-18-21SCAU](#) [M83513/01-](#)  
[FC](#) [M83723/76W24619 L/C](#) [M85049/48-3-2F](#) [69001-865](#) [6STD09PCM99B70X](#) [6STD09SCM99B30X](#) [6STD09SCT99S40X](#)