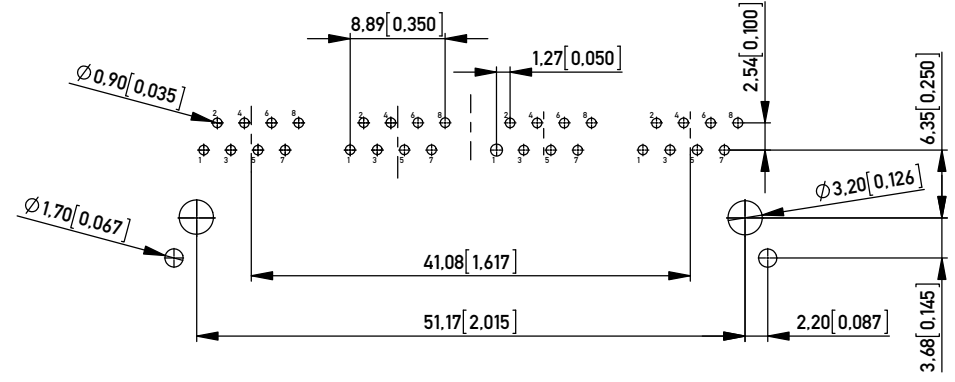
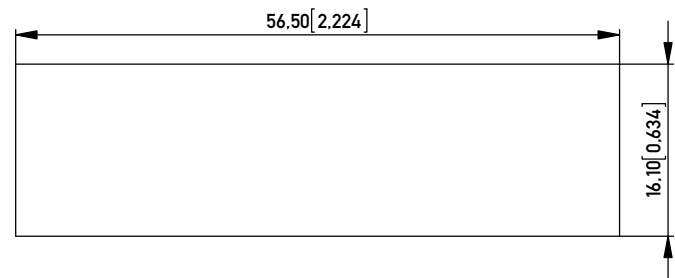


RECOMMENDED PCB LAYOUT (COMPONENT SIDE VIEW)  
 EMPFOHLENES LEITERPLATTEN-LAYOUT (BESTUECKUNGSSEITE)  
 TOL. ±0.05 [0.002] UNLESS NOTED



RECOMMENDED PANEL CUTOUT  
 EMPFOHLENER FRONTPLATTEN-AUSSCHNITT



**Technical specifications**

**Materials & Finish**

|                                  |                         |
|----------------------------------|-------------------------|
| Insulation body                  | PBT                     |
| Contact material                 | Phosphor Bronze (C5210) |
| Contact finish, mating zone      | 30µin Au                |
| Contact finish, termination zone | 150-200µin Sn matte     |
| Underplating                     | 50-100µin Ni            |
| Shell/shield material            | C2680 (acc. JIS)        |
| Shell/shield plating             | 30µin Ni                |

**Assembly Process**

|                           |               |
|---------------------------|---------------|
| Packaging                 | Tray          |
| Solder temperature        | 240°C at 3-5s |
| Suitable assembly process | wave          |

**Approvals**

|                    |         |
|--------------------|---------|
| UL insulation body | V0      |
| UL File No.        | E145613 |
| RoHS compliant     | Yes     |

**Mechanical properties**

|  |                |            |
|--|----------------|------------|
| Insertion/withdrawal force                 | IEC 603-7      | max. 20 N  |
| Mechanical operations                      | IEC 512-5, 9a  | min. 1.000 |
| Effectiveness of connector coupling device | IEC 512-8, 15f | 50 N       |

**Electrical properties**

|  |               |                    |
|--|---------------|--------------------|
| Creepage / clearance distances               |               |                    |
| a) Contact - contact                         | IEC 807-3     | 0,52 mm            |
| b) Contact - shell                           | IEC 807-3     | min 1,0 mm         |
| Voltage proof (Dielectric Withstand Voltage) |               |                    |
| a) Contact - contact                         | IEC 512-2, 4a | min. 1.000 V AC/DC |
| b) Contact - shell/ testpane                 | IEC 512-2, 4a | min. 1.500 V AC/DC |
| Current carrying capacity                    | IEC 512-3, 5b | 1.5 A @ 25°C       |
| Contact resistance                           | IEC 512-2, 2a | max. 30 mOhm       |
| Insulation resistance                        | IEC 512-2, 3a | min. 500 MOhm      |

**Environmental properties**

|                       |              |
|-----------------------|--------------|
| Operation temperature | -40 to +85°C |
|-----------------------|--------------|

NOTE 1: C-UL APPROVED E145613 AND MEETS FCC REQUIREMENTS  
 NOTE 2: RoHS COMPLIANT

| PART NO.<br>IDENT. NR.   | TRANSMISSION REQUIREMENT<br>ÜBERTRAGUNGSANFORDERUNG   |
|--|---|
| 203540   | CATEGORY 3/4  |
| Information:   | Tolerances<br>x ±0.50<br>x.x ±0.38<br>x.xx ±0.25<br>All Dimensions in mm                                |
| All rights reserved. Only for Information. To ensure that this is the latest version of this drawing, please contact one of the ERNI companies before using. | Scale 2:1<br>Designation<br><b>MOD JACK - MJV<br/>           8P8C, 1 x 4, VERTICAL</b><br><b>203539</b> |
| ERNI www.ERNI.com<br>11.12.2013<br>Date  | (1/1)<br><b>A3</b><br>Class MJ  |

Copyright by ERNI GmbH. Proprietary notice pursuant to ISO 9006 to be observed.

## X-ON Electronics

Largest Supplier of Electrical and Electronic Components

*Click to view similar products for [Modular Connectors / Ethernet Connectors](#) category:*

*Click to view products by [ERNI](#) manufacturer:*

Other Similar products are found below :

[8949-H88/06BLKA/SN](#) [74441-0010/BKN](#) [MP1010RX-1000](#) [MP44RX-1000](#) [PHJ-4P4C-1-V-4](#) [PHP-6P6C-5](#) [GAX-3-66](#) [GAX-8-62](#) [GDCX-PA-66-50](#) [GDCX-PN-64](#) [GDCX-PN-66](#) [GDCX-PN-66-50](#) [GDLX-A-66](#) [GDLX-N-66](#) [GDLX-S-66](#) [GDLX-S-88K](#) [GDLX-SMT-S-88](#) [GDTX-S-88-50](#) [GDX-PA-1010](#) [GLX-N-1010M-BLK](#) [GLX-S-88M-BLK](#) [GMX-N-1010](#) [GMX-S-1010](#) [GMX-S-66](#) [GMX-SMT4-N-88](#) [GPX-2-64](#) [GSGX-N-2-88](#) [GSGX-N-4-88](#) [GSX-NS2-88-3.05](#) [GSX-NS2-88-3.05-50](#) [GSX-NS-88-3.05-50](#) [PT-108A-8C-UL](#) [PT-J951-8C](#) [PTS-J531-8CS-50UL](#) [1-1775629-2](#) [A-2014-0-4](#) [GWLX-S-88-GR](#) [GWLX-S9-88-YG](#) [DC-1021-8-WH-6](#) [1300530003](#) [1324640-4](#) [RJ11FTVC2G](#) [RJ11FTVC2N](#) [RJFTVX2SA1G](#) [132764-001](#) [1413235](#) [MP88X-1000](#) [MPS88RX-5000](#) [E5288-S000K3-L](#) [E5908-15A242-L](#)