

ohne / without

Mutter / thread

Bolzen / bolt

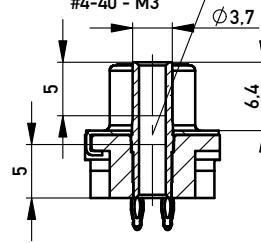
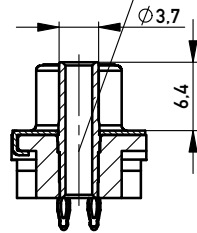
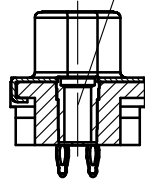
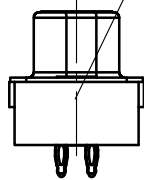
Bolzen / bolt

Durchgangsloch  $\varnothing 3.5$   
through hole  $\varnothing 3.5$

Gewinde / thread  
M3 / #4-40

Gewinde / thread  
M3 / #4-40

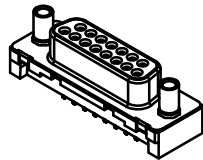
Gewinde / thread  
M3 - #4-40  
#4-40 - M3



Anschlussbereich verzinkt  
terminal area tin plating

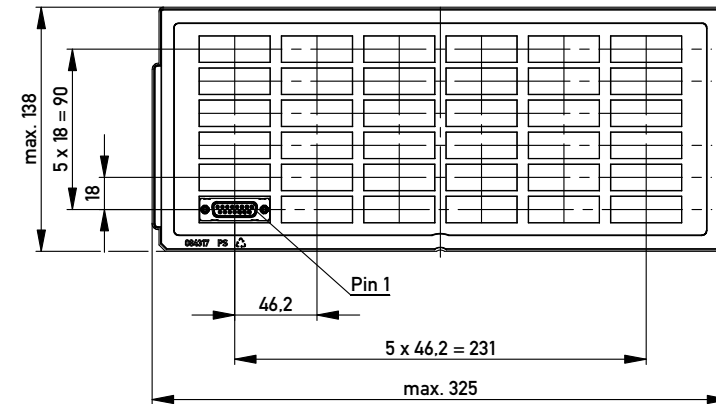
Anforderungsstufe: 2  
class: 2

M 1:1



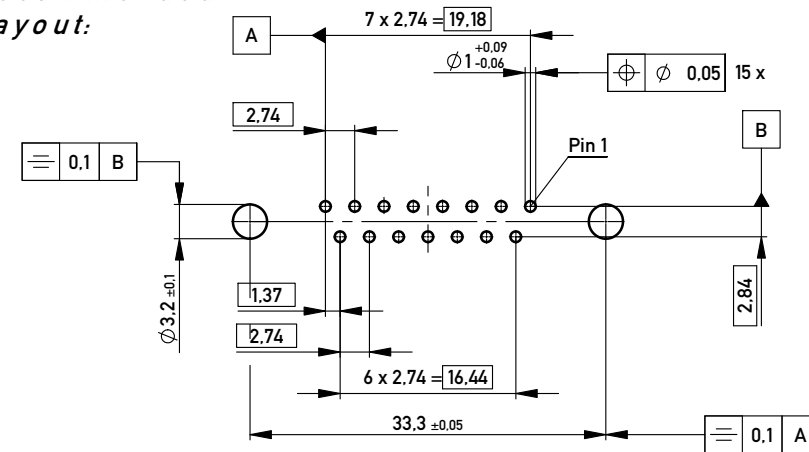
204324	$\varnothing 3.5$			
204328			#4-40	
204327			M3	
214589			#4-40-M3	
204326		#4-40		
204293		M3		
Ident.-Nr. part-no.	ohne without	Mutter thread	Bolzen bolt	Bemerkung remark

Verpackt in Tray  
Verpackungseinheit 36 St.  
tray packaging  
packaging unit 36 pcs



Sonstige Angaben siehe Zeichnung 204628 / Additional indications according to drawing 204628

Layoutvorschlag:  
recommended  
layout:



Lochaufbau siehe ERNI - Spezifikation 164062 / hole design according to ERNI - specification 164062

Fehlende Masse und Angaben siehe DIN 41652 / Missing information and dimensions according to DIN 41652  
Sonstige Angaben siehe Fertigungsunterlagen / Additional indications according to the production documentation

Information:  All rights reserved. Only for Information. To ensure that this is the latest version of this drawing, please contact one of the ERNI companies before using.	Tolerances	 All Dimensions in mm	Scale	2:1
	Subject to modification without prior notice. Drawing will not be updated.		Designation <b>TMC-S 15-EESV-3,0-6,3-BA8-ZV</b> <i>TMC-S 15-EESV-3,0-6,3-type 8-ZV</i>	
www.ERNI.com	<b>144946</b>		I A3	
	d Index	03.05.2012 Date	Class TMCS	

## X-ON Electronics

Largest Supplier of Electrical and Electronic Components

*Click to view similar products for [D-Sub Standard Connectors](#) category:*

*Click to view products by [ERNI](#) manufacturer:*

Other Similar products are found below :

[56F711-015](#) [012-9507-004](#) [LV242999-142T12](#) [015-0341-000](#) [015-0349-000](#) [015-0372-005](#) [015-0372-008](#) [015-8755-001](#) [020419-0104](#) [012-0467-000](#) [012-0515-000](#) [012-9507-034](#) [012-9507-114](#) [020745-0008](#) [609-25P](#) [M24308315F](#) [CT2-14S-2PCA34](#) [CT2-18-11PCAU](#) [CT2-36-15SC](#) [CT6-14S-2SC](#) [CT6E14SA7SC](#) [CT6E22-14PC](#) [CT6E22-14PS](#) [CT6E22-22PS](#) [M83513/01-FC](#) [M85049/48-3-2F](#) [6STD09PCM99B70X](#) [6STD09SCM99B30X](#) [6STD09SCT99S40X](#) [6STD15PCT99S40X](#) [6STD15SCM99B30X](#) [6STD15SCT99S40X](#) [6STF09PCM05B70X](#) [7-135760-9](#) [MC11E-10-6SN](#) [747552-3](#) [MD1-21PS](#) [MDM-15SCBRM7-F222](#) [MDM96517-699](#) [MDM96521-744](#) [MDVB1-21SL1](#) [MIK0-1-7SH003](#) [MIKQ6-7SH076](#) [MIKQ7-7PH077](#) [MIKQ7-7PH11](#) [MIKQ7-7PH32](#) [MIKQ9-7PH003](#) [MJSV-28SL61](#) [MKJ4A1F14-55S](#) [8-135760-3](#)