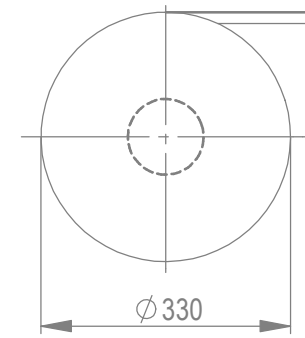
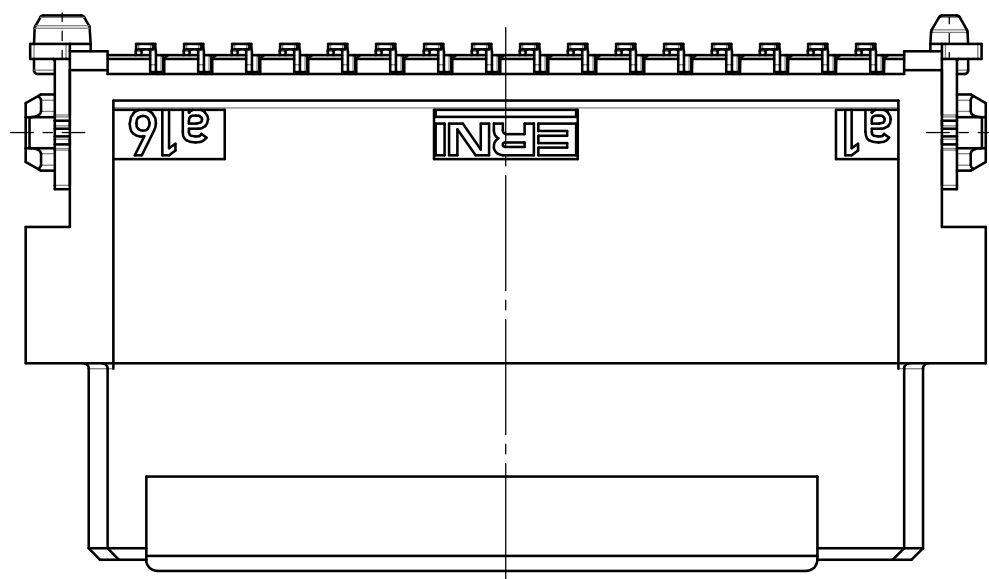
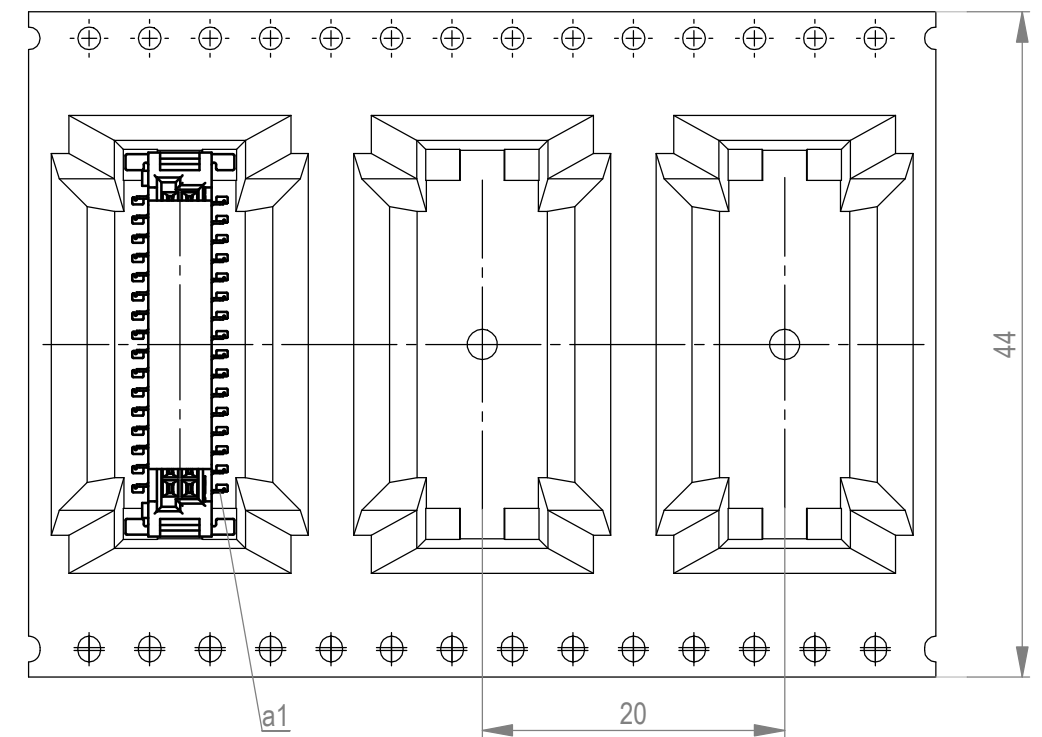
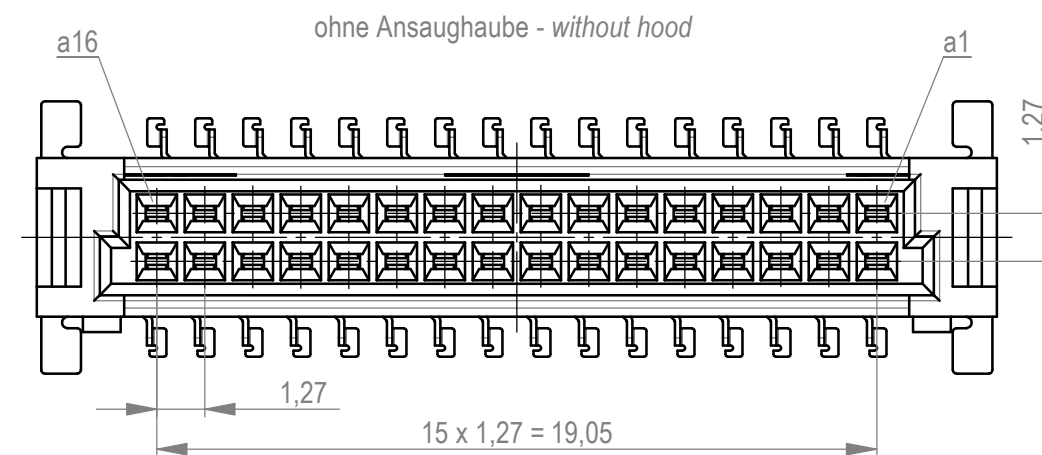
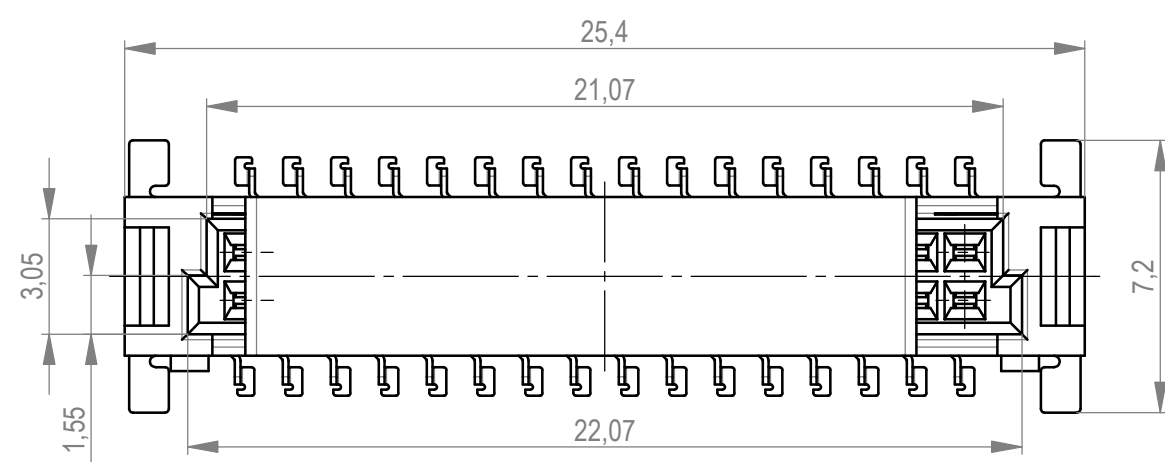


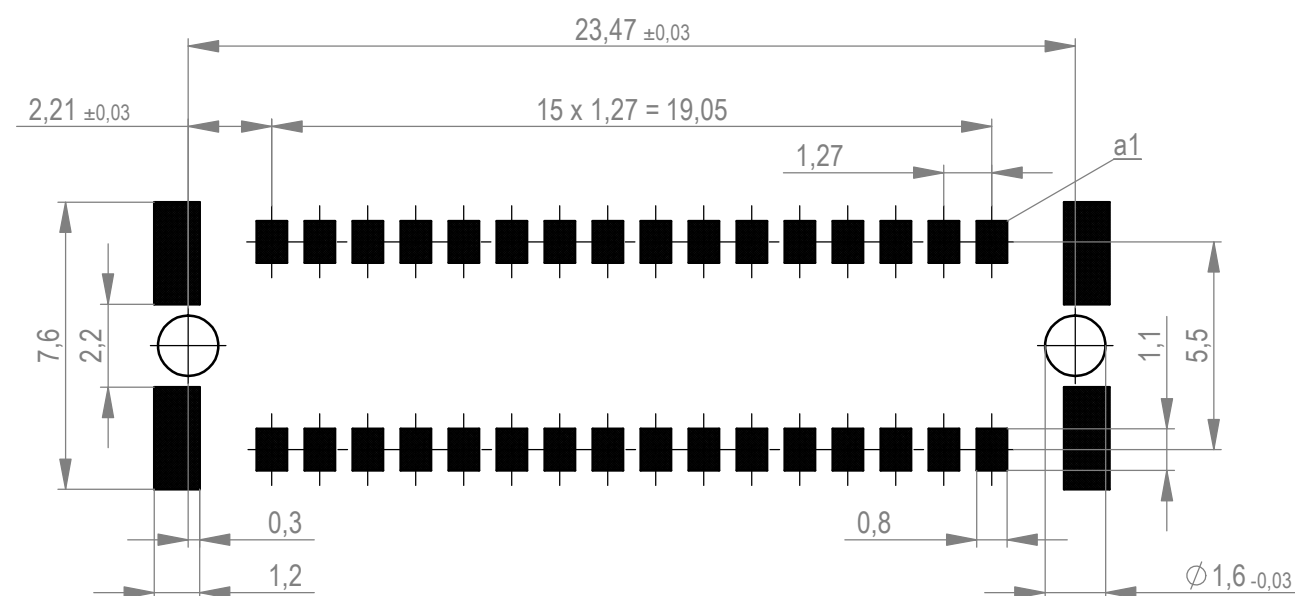
Verpackt im Gurt in Anlehnung an DIN IEC 60286-3  
*tape on reel packaging according to DIN IEC 60286-3*  
 Verpackungseinheit: 170 Stück  
*packaging unit: 170 pcs*



Abspulrichtung - reel off direction 



Leiterplatten-Layout Vorschlag für SMT  
PCB-Layout Proposal for SMT





Anforderungsstufe 1  
performance level 1

Kontaktbereich vergoldet  
*mating area gold plating*

Anschlussbereich verzinnt 4-6  $\mu\text{m}$   
terminal area 4-6  $\mu\text{m}$  tin plating

Koplanarität der Anschlüsse  $\leq 0,1 \text{ mm}$   
*coplanarity area of termination  $\leq 0,1 \text{ mm}$*

Dimension no.		Tolerances				Scale 5:1													
		ISO 8015		All Dimensions in mm		Material													
<u>Customer drawing:</u>  All rights reserved. Only for Information. To ensure that this is the latest version of this drawing, please contact one of the ERNI companies before using.		Subject to modification without prior notice. Drawing will not be updated.				Federl. SMC-B 32-SMD-BA7-23 Female SMC-B 32-SMT-type7-23													
<table><tr><td>d</td><td></td><td>06.05.2021</td><td></td></tr><tr><td>Index</td><td></td><td>Date</td><td></td></tr></table>		d		06.05.2021		Index		Date				ERNI International AG Zürichstrasse 72 8306 Brüttisellen - Zürich Switzerland		354072		<table><tr><td>I</td></tr><tr><td>A2</td></tr></table>		I	A2
d		06.05.2021																	
Index		Date																	
I																			
A2																			
				Class		SMCB													

## X-ON Electronics

Largest Supplier of Electrical and Electronic Components

*Click to view similar products for [Board to Board & Mezzanine Connectors](#) category:*

*Click to view products by [ERNI](#) manufacturer:*

Other Similar products are found below :

[589158040000018](#) [MDF7C-18P-2.54DSA\(55\)](#) [FCN-230C068-11](#) [FCN-268F012-G/BD](#) [FCN-268F036-G/BD](#) [FCN-268M012-G/0D](#) [FCN-268M024-G/1D](#) [FCN-723J004/1](#) [MIS-048-01-F-D-DP-K](#) [832-10-034-10-001000](#) [FX4C-80S-1.27DSA](#) [FCN-214Q030-G/0](#) [FCN-234P048-G/0](#) [FCN-235D050-G/C](#) [210-93-314-41-105000](#) [2-22603-0](#) [MDF7-40DP-2.54DSA\(55\)](#) [AXG720047](#) [5031084030](#) [MIT-114-03-F-D-K](#) [55323-1519](#) [DF33-2P-3.3DSA\(24\)](#) [YFT-20-05-H-03-SB-K](#) [503308-3040](#) [026-6203-PDB](#) [027-6203-PDB](#) [069159702701000](#) [10123981-102LF](#) [101A10019X](#) [55650-0588-C](#) [68684-306](#) [75140-7012](#) [589159005003045](#) [063209](#) [194261-1](#) [FCN-268F024-G0D](#) [10124054-515LF](#) [68685-603](#) [8-1616154-3](#) [MIS-019-01-F-D](#) [589159005002045](#) [541371078](#) [IL-WX-10PB-HF-B-E1000E](#) [FCN-268M024-G/3D](#) [20021832-06016C1LF](#) [KX15-20KLDL-E1000E](#) [MDF7-16DP-2.54DSA\(55\)](#) [AXE810124](#) [FCN-214J100-G/0](#) [FCN-230C068-E/S](#)