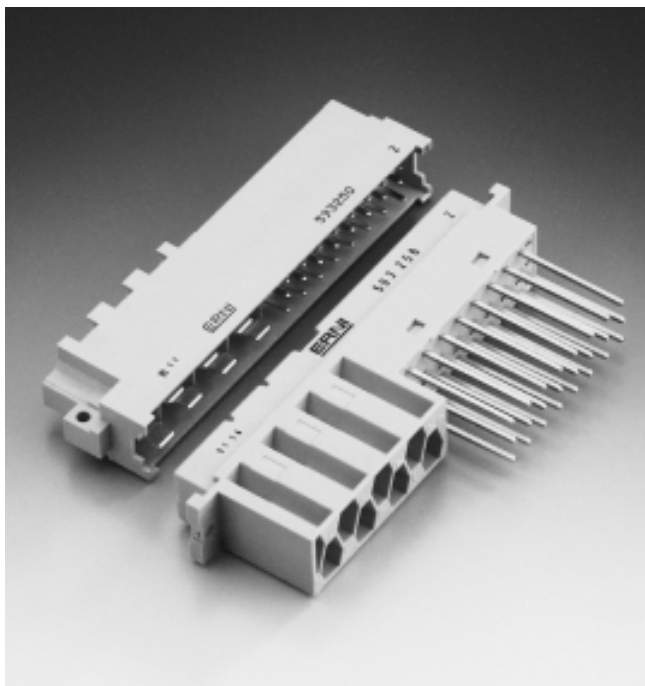


Size H7/F24

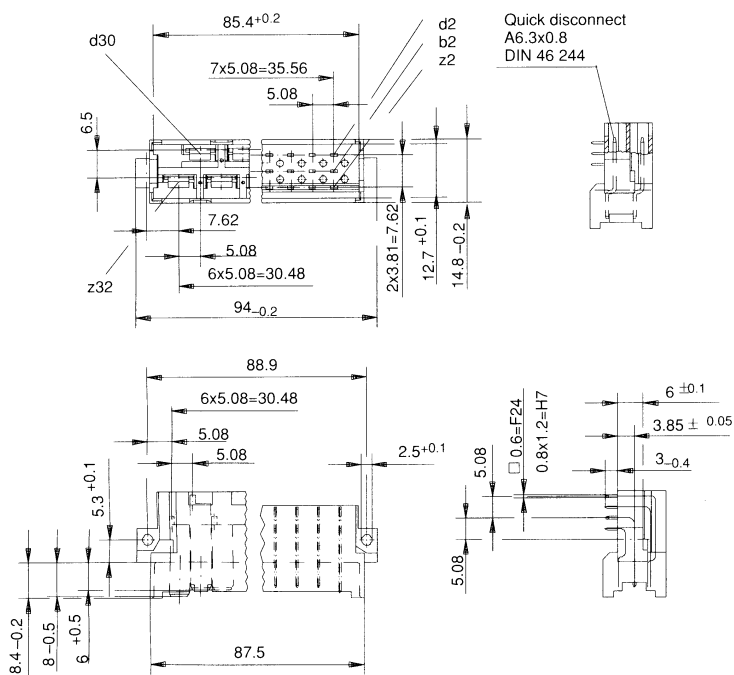
Combined connector

Mating-and mounting-conditions according to DIN 41612/IEC 60603-2

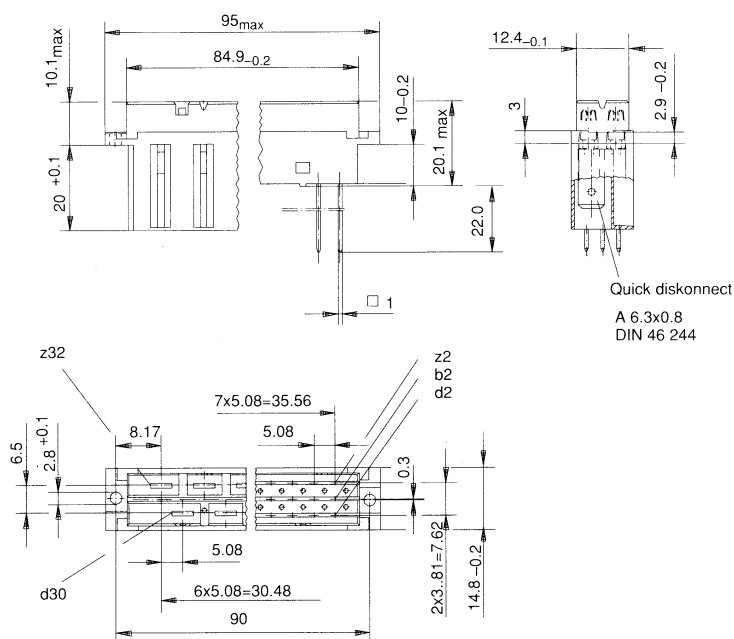


Dimensional drawings

Male connector



Female connector

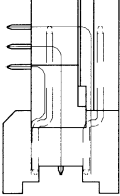
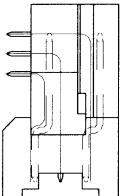


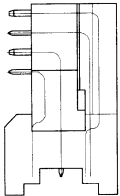
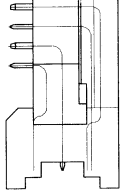
Orderings details

Male connector size H7/F24

Combined connector

Mating-and mounting-conditions according to DIN 41612/IEC 60603-2

 <p>STV-H 7/F24-M 7 terminations 6.3x0.8mm for quick disconnect 24 terminations for dip soldering</p>		
	1	2
PC	413 639	593 252
 <p>STV-H 7/F24-M VE z2+z32 ^① 7 terminations 6.3x0.8mm for quick disconnect 24 terminations for dip soldering</p>		
	1	2
PC	413 171	593 248

 <p>STV-H 7/F24-M 7 terminations 6.3x0.8mm for quick disconnect 24 terminations for dip soldering</p>		
	1	2
PC	413 640	593 254
 <p>STV-H 7/F24-M VE z2+z 32 ^① 7 terminations 6.3x0.8mm for quick disconnect 24 terminations for dip soldering</p>		
	1	2
PC	413 172	593 250

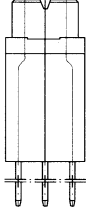
① VE...early make/last break contacts on position...
Male connectors with early make/last break contacts can be loaded in any position.

Further versions on request.

Female connector size H7/F24

Combined connector

Mating-and mounting-conditions according to DIN 41612/IEC 60603-2

 <p>STV-H 7/F24-F 7 terminations 6.3x0.8mm for quick disconnect 24 terminations for wire wrap cross section 1x1mm</p>		
	1	2
PC	413 173	593 256

Size H7/F24 connectors have integral coding by means of coding pins. The male connectors have drill centering recesses which require the complete hole to be drilled for coding pin loading. The coding pins from the male connectors can then be inserted into the complementary holes predrilled in the female connectors.

The 7 high-current contacts of H7/F24 connectors are hard silver-plated and their electrical and mechanical service life conforms to Performance Level 1. The 24 low level signal contacts are as described for size F. They are gold-plated in the mating zone in accordance with the stated Performance Level and are tin-plated in the terminal zone.

Further versions on request.

X-ON Electronics

Largest Supplier of Electrical and Electronic Components

Click to view similar products for [Headers & Wire Housings](#) category:

Click to view products by [ERNI](#) manufacturer:

Other Similar products are found below :

[95000-104TRLF](#) [10135584-644402LF](#) [DF62W-EP2022PCA](#) [95000-106TRLF](#) [DF62W-2022SCA](#) [DF62W-EP2022PC](#) [2203348](#) [DF62W-2022SC](#) [1084018](#) [1029039](#) [1084017](#) [802-10-012-10-002000](#) [1112640](#) [1112639](#) [891-007-9SS-BST1T](#) [000-34000](#) [0008550134](#) [0009482033](#) [0009507031](#) [57102-F02-18ULF](#) [57102-S06-03LF](#) [57202-S52-04LF](#) [PCN6-15S-2.5E](#) [0039019024](#) [58102-G61-06LF](#) [582553-1](#) [0009485154](#) [0009508121](#) [0022285053](#) [0050291907](#) [018731A](#) [LY20-4P-DT1-P1E-BR](#) [02.125.8002.8](#) [60101931](#) [60598-1 \(Cut Strip\)](#) [M1625-3R/100](#) [61062-3](#) [61082-181009](#) [CSU011177004](#) [636-1427](#) [638009-1](#) [641938-9](#) [641991-4](#) [644168-1](#) [644827-2](#) [647662-1](#) [65039-019ELF](#) [65692-001LF](#) [65781-018](#) [65781-047](#)