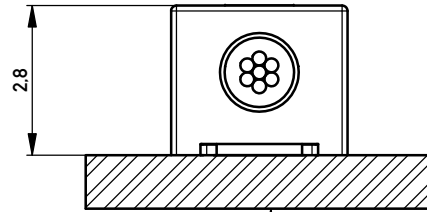
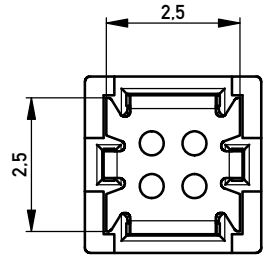
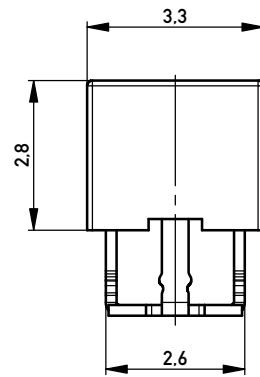
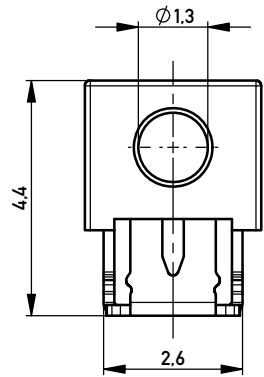
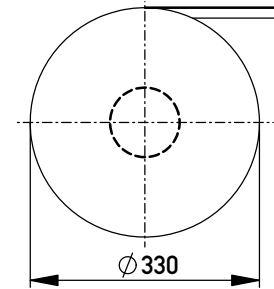


Terminal verpresst
Terminal pressed

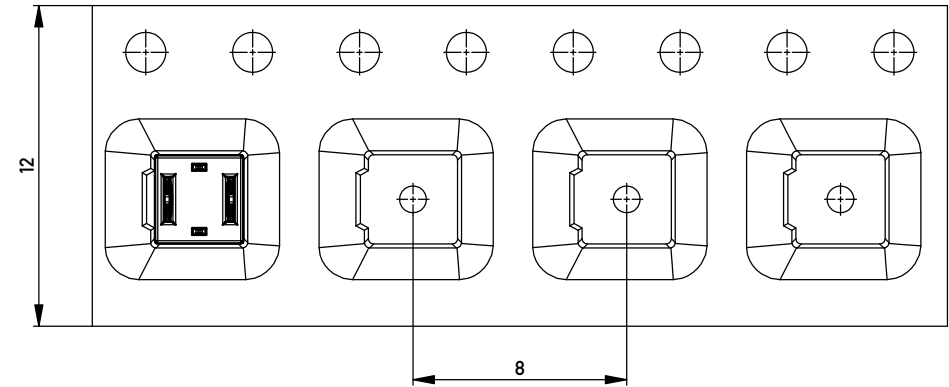


Leiterplatte
PCB

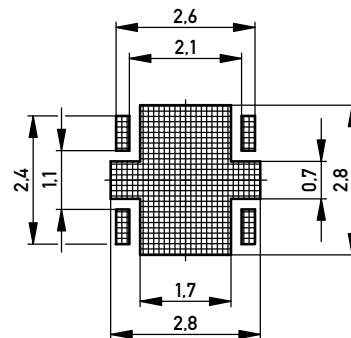
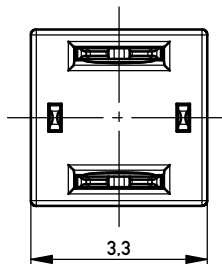
Verpackt in Gurtverpackung
Tape on Reel Packaging
Verpackungseinheit: 2000 Stück
Packaging unit: 2000 pcs



Abspulrichtung - Reel off Direction



Leiterplatten-Layout Vorschlag
PCB-Layout Proposal



*AWG 22/7 D 1,3 ohne Kabelanschlag
*AWG 22/7 D 1,3 without cable stop

| | | | | | |
|--|------------|--|----------------------|--|----------|
| Information: | | Tolerances | All Dimensions in mm | Scale | 10:1 |
| All rights reserved. Only for Information. To ensure that this is the latest version of this drawing, please contact one of the ERNI companies before using. | | Subject to modification without prior notice. Drawing will not be updated. | | Designation Schneidklemmterminal * IDC-Terminal* | |
| ERNI | | www.ERNI.com | | 454302 | |
| a | 05.12.2012 | | | I | |
| Index | Date | | | A3 | |
| | | | | Class | IDC-TERM |

Copyright by ERNI GmbH
Proprietary notice pursuant to ISO 9006 to be observed.

X-ON Electronics

Largest Supplier of Electrical and Electronic Components

Click to view similar products for [DIN 41612 Connectors](#) category:

Click to view products by [ERNI](#) manufacturer:

Other Similar products are found below :

[004.767](#) [608489050008049](#) [691327-1](#) [74670-0732](#) [74680-0340](#) [75880-0015](#) [76453-0014](#) [86093159ALF](#) [9732967801](#) [QLC260R](#)
[120X10019X](#) [120X10089X](#) [122A10249X](#) [122A11089X](#) [122A13089X](#) [122A10089X](#) [122A10129X](#) [122A10349X](#) [122A13359X](#) [1377391-4](#)
[DIN-048CPC-SR1-MH](#) [1393583-2](#) [1393726-7](#) [140X10129X](#) [143-1913-000](#) [143-1908-000](#) [1484472-1](#) [2110070-1](#) [2110070-2](#) [CBC20T00-](#)
[008FDS5-0-1-002VR](#) [172699-5036](#) [2-1393557-4](#) [2-1437084-2](#) [394506](#) [419-2080-402](#) [419-2085-302](#) [V42254B2202C968](#) [419-2086-201](#) [419-](#)
[2087-002](#) [448657-1](#) [448847-3](#) [5-1393755-9](#) [02990000004](#) [033020](#) [043619](#) [054302](#) [043556](#) [0760557108](#) [09062483201750](#) [0850033067](#)