

1.27 mm SRC Single Row Connector - MiniBridge™ Cable System

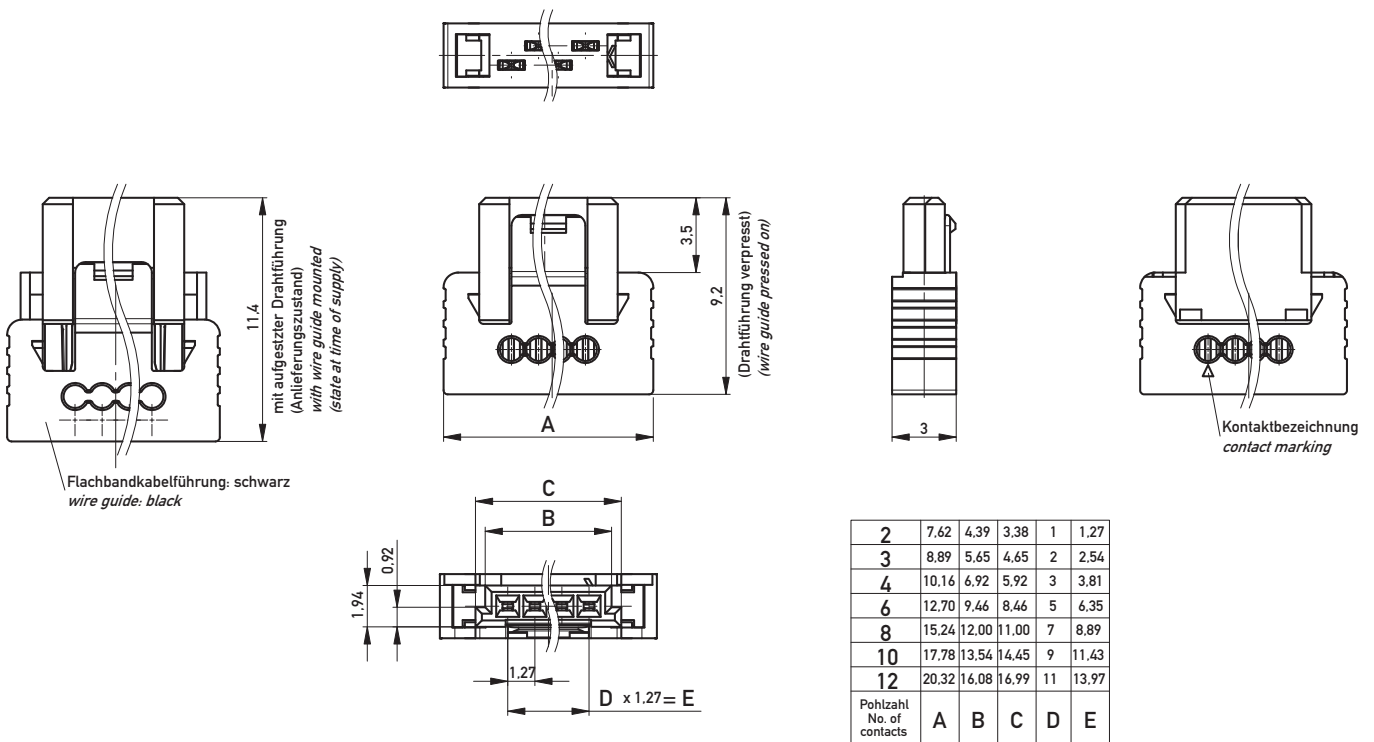
Cable Assemblies



Standard cable assemblies are available from ERNI. Thanks to the versatile options of our female connectors, the widest range of applications can be realized. The female connectors are available with different types of locking latches for normal vibration/shock loads (black model) as well as applications involving heavy vibration/shock loads (red model). The robust version (red) is only unlockable with a sharp item, e.g. tip of pen. The IDC terminal is designed for AWG-24 or AWG-26 conductors (solid or stranded). Partial loading is also possible using single wire. Cable outlet is 90° or 180°.

Dimensional Drawing

Female Connector Cable Outlet 90°

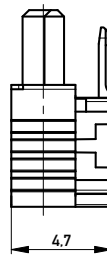
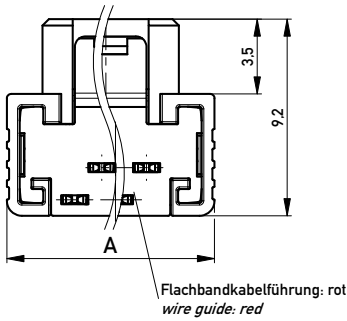
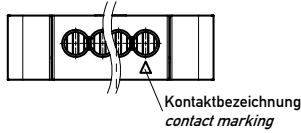


All dimensions in mm.

1.27 mm SRC Single Row Connector - MiniBridge™ Cable System Cable Assemblies

Dimensional Drawing

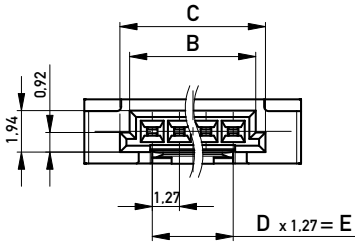
Female Connector Cable Outlet 180°



mit aufgesetzter Drahtführung
(Anlieferungszustand)
with wire guide mounted
(state at time of supply)

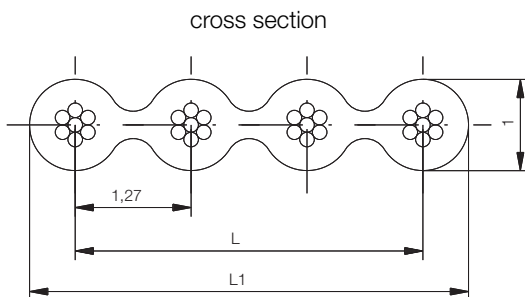


Drahtführung verpresst
(wire guide pressed on)



2	7.62	4.39	3.38	1	1.27
3	8.89	5.65	4.65	2	2.54
4	10.16	6.92	5.92	3	3.81
6	12.70	9.46	8.46	5	6.35
8	15.24	12.00	11.00	7	8.89
10	17.78	13.54	14.45	9	11.43
12	20.32	16.08	16.99	11	13.97
Pohlzahl No. of contacts	A	B	C	D	E

Dimensional Drawing Ribbon Cable



13,97	13,97	12
11,43	12,43	10
8,89	9,89	8
6,35	7,35	6
3,81	4,81	4
2,54	3,54	3
1,27	2,27	2
L	L1	Pohlzahl Number of Conductors


All dimensions in mm.

1.27 mm SRC

Single Row Connector - MiniBridge™ Cable System

Cable Assemblies

Ordering Information

No. of Pins	Length	Cable Type (AWG-26)	Connector 1	Connector 2	Part Number
					
2	100 mm	PVC	SFX	SFX	839010
2	200 mm	PVC	SFX	SFX	839011
2	300 mm	PVC	SFX	SFX	839012
3	100 mm	PVC	SFX	SFX	839013
3	200 mm	PVC	SFX	SFX	839014
3	300 mm	PVC	SFX	SFX	839015
4	100 mm	PVC	SFX	SFX	839016
4	200 mm	PVC	SFX	SFX	839017
4	300 mm	PVC	SFX	SFX	839018
6	100 mm	PVC	SFX	SFX	839019
6	200 mm	PVC	SFX	SFX	839020
6	300 mm	PVC	SFX	SFX	839021
8	100 mm	PVC	SFX	SFX	839022
8	200 mm	PVC	SFX	SFX	839023
8	300 mm	PVC	SFX	SFX	839024
10	100 mm	PVC	SFX	SFX	839162*
10	200 mm	PVC	SFX	SFX	839163*
10	300 mm	PVC	SFX	SFX	839164*
12	100 mm	PVC	SFX	SFX	839165*
12	200 mm	PVC	SFX	SFX	839166*
12	300 mm	PVC	SFX	SFX	839167*


* Only sample ordering possible. Series production start in April 2009.

1.27 mm SRC

Single Row Connector - MiniBridge™ Cable System

Cable Assemblies

Ordering Information

No. of Pins	Length	Cable Type (AWG-26)	Connector 1	Connector 2	Part Number
					
2	100 mm	PVC	AFU	AFU	839025
2	200 mm	PVC	AFU	AFU	839026
2	300 mm	PVC	AFU	AFU	839027
3	100 mm	PVC	AFU	AFU	839028
3	200 mm	PVC	AFU	AFU	839029
3	300 mm	PVC	AFU	AFU	839030
4	100 mm	PVC	AFU	AFU	839031
4	200 mm	PVC	AFU	AFU	839032
4	300 mm	PVC	AFU	AFU	839033
6	100 mm	PVC	AFU	AFU	839034
6	200 mm	PVC	AFU	AFU	839035
6	300 mm	PVC	AFU	AFU	839036
8	100 mm	PVC	AFU	AFU	839037
8	200 mm	PVC	AFU	AFU	839038
8	300 mm	PVC	AFU	AFU	839039
10	100 mm	PVC	AFU	AFU	839168*
10	200 mm	PVC	AFU	AFU	839169*
10	300 mm	PVC	AFU	AFU	839170*
12	100 mm	PVC	AFU	AFU	839171*
12	200 mm	PVC	AFU	AFU	839172*
12	300 mm	PVC	AFU	AFU	839173*


* Only sample ordering possible. Series production start in April 2009.

1.27 mm SRC

Single Row Connector - MiniBridge™ Cable System

Cable Assemblies

Ordering Information

No. of Pins	Length	Cable Type (AWG-26)	Connector 1	Connector 2	Part Number
					
2	100 mm	PVC	SFX	AFU	839040
2	200 mm	PVC	SFX	AFU	839041
2	300 mm	PVC	SFX	AFU	839042
3	100 mm	PVC	SFX	AFU	839043
3	200 mm	PVC	SFX	AFU	839044
3	300 mm	PVC	SFX	AFU	839045
4	100 mm	PVC	SFX	AFU	839046
4	200 mm	PVC	SFX	AFU	839047
4	300 mm	PVC	SFX	AFU	839048
6	100 mm	PVC	SFX	AFU	839049
6	200 mm	PVC	SFX	AFU	839050
6	300 mm	PVC	SFX	AFU	839051
8	100 mm	PVC	SFX	AFU	839052
8	200 mm	PVC	SFX	AFU	839053
8	300 mm	PVC	SFX	AFU	839054
10	100 mm	PVC	SFX	AFU	839174*
10	200 mm	PVC	SFX	AFU	839175*
10	300 mm	PVC	SFX	AFU	839176*
12	100 mm	PVC	SFX	AFU	839177*
12	200 mm	PVC	SFX	AFU	839178*
12	300 mm	PVC	SFX	AFU	839179*

* Only sample ordering possible. Series production start in April 2009.

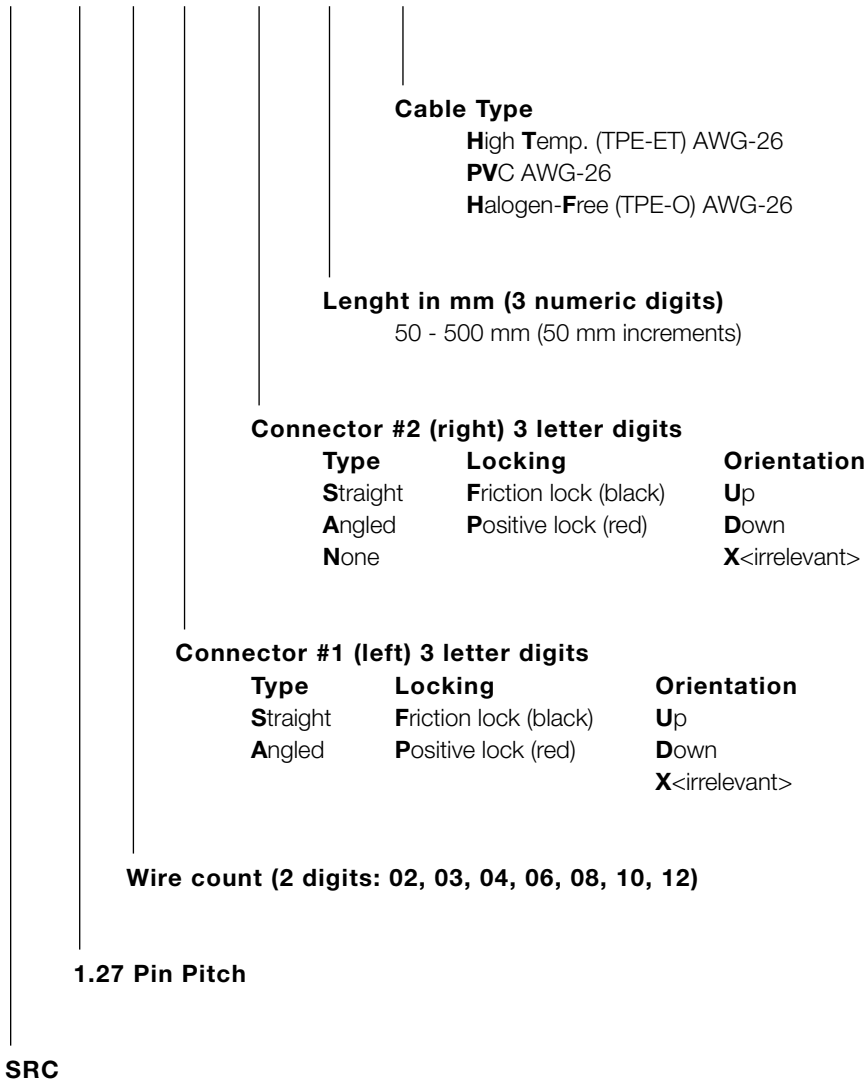
1.27 mm SRC

Single Row Connector - MiniBridge™ Cable System

Cable Assemblies

Order Code

IDCCS_SRC_1.27_□□_□□□_□□□_□□□_□□



Note:

Please use the order code for orderings differing to the standard cable assemblies. A part number will be specified during series order.

X-ON Electronics

Largest Supplier of Electrical and Electronic Components

Click to view similar products for [Headers & Wire Housings](#) category:

Click to view products by [ERNI](#) manufacturer:

Other Similar products are found below :

[892-18-020-10-001101](#) [58102-G61-06LF](#) [582553-1](#) [0009485154](#) [009176003701906](#) [0050291907](#) [LY20-4P-DT1-P1E-BR](#) [02.125.8002.8](#)
[609-3404](#) [61062-3](#) [61082-181009](#) [622-3653LF](#) [63453-116](#) [636-1030](#) [636-1427](#) [636-3427](#) [636-4007](#) [641938-9](#) [641991-4](#) [644827-2](#) [65817-](#)
[010LF](#) [65817-015LF](#) [65863-015LF](#) [66207-023LF](#) [67095-007LF](#) [67601157](#) [68645-018](#) [68648-049](#) [70.362.1628.0](#) [70-4210](#) [70-4226B](#) [70-](#)
[4853B](#) [707-5020](#) [707-5028](#) [71.350.2428.0](#) [71918-208LF](#) [71961-016LF](#) [733-134](#) [733-162](#) [754199-000](#) [760-3052](#) [787-8014-00](#) [79531-3000](#)
[FCN-360C032-B](#) [FCN-367T-T012/H](#) [FCN-723D010/2](#) [80.063.4001.1](#) [800-90-001-10-001000](#) [800-90-010-10-002000](#) [801-43-002-10-013000](#)