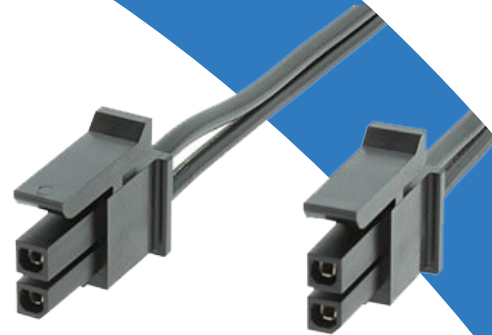


INDEX:
KABX-2PFF-L200

CONNECTION CABLE WITH MOLEX CONNECTOR



PRODUCT NAME:
TLYp cable with Molex 2PIN MX-43025-0200

CONSTRUCTION DETAILS:
TLYp type cable with $2 \times 0,35 \text{mm}^2$ core area, black PVC insulation, class 5 copper stranded wire, one core marked with a red color with a Molex MX-43025-0200 connector and MX-43030-0007 crimped contacts by machine.

APPLICATIONS:
For stationary installations in dry and damp places and for installation inside devices in medium operating conditions (e.g. in washing machines, dryers, refrigerators, and other home appliances, portable work equipment, home consumer electronics). Devices requiring cables with high flexibility where there is no risk of contact with hot parts in applications such as:

- audio systems and loudspeaker installations,
- alarm and intercom systems,
- building and home automation systems,
- control devices in electronic and industrial automation installations,
- LED lighting (LED).

TECHNICAL SPECIFICATION:

Temperature range [°C]	From -15 to 70
Maximum working voltage [V]	150
Minimum insulation strength for alternating current 50 Hz [VAC]	1000
Maximum current [A]	4
Insulation material	PVC
Core area [mm ²]	2×0,35
External dimensions of the cable [mm]	1,6×3,4
Colors of the cores	Black/Red
Core material	Cooper
Core type	Stranded wire
Cable length [mm]	200
Connector designator	MX-43025-0200
Connector type	Micro-Fit 3.0 Molex
Number of pins	2
Connector type	Female
ROHS 2015/863	Compliant
LVD 2014/35/UE	Compliant

The cable cannot be used for high-current installation outside devices.

X-ON Electronics

Largest Supplier of Electrical and Electronic Components

Click to view similar products for [Espe manufacturer](#):

Other Similar products are found below :

[E0909W2E](#) [E0909W2E-07235](#) [E0909W2E-07235-L](#) [E0909W2E-1335](#) [E0909W2E-1335-L](#) [E0909W2E-2155-L](#) [E0909W2E-2555](#)
[E0909W2E-2555-L](#) [E1212W2E-ES-2555S](#) [E2409W2E](#) [E2409W2E-2555S](#) [E2412W2E-1335](#) [E2412W2E-2155](#) [E2412W2E-2155L](#)
[E2412W2E-2555](#) [E2412W2E-2555-L](#) [E2415W2E](#) [E2424W2E-2155](#) [E2424W2E-2155L](#) [E2424W2E-2555](#) [E2424W2E-2555L](#) [E3612C8](#)
[E3612C8-2155L](#) [E3612C8-2555L](#) [E3612C8-2555S](#) [E3612C8-2563](#) [E6012C8-2555L+OP](#) [E6012C8-2555+OP](#) [E6012C8+OP](#) [ESPE-0112-](#)
[W2E-2155](#) [ESPE-0312-W2E-2155+OP](#) [ESPE-0312-W2E-BW](#) [ESPE-0312-W2E-JACK3.5L](#) [ESPE-0606W2E-1740](#) [ESPE-0606-W2E-2155](#)
[ESPE-0606-W2E-2155L](#) [ESPE-0606-W2E-2155L+OP](#) [ESPE-0606-W2E-2155+OP](#) [ESPE-0606-W2E-2555](#) [ESPE-0606-W2E-2555+OP](#)
[ESPE-06UN-W2E](#) [ESPE-0909-W2E-1740](#) [ESPE-0909-W2E-1748L](#) [ESPE-1005-W2E-MICROUSB](#) [ESPE-1224-W2E-2155](#) [ESPE-1224-](#)
[W2E-2155+OP](#) [ESPE-12UN-W2E](#) [ESPE-18UN-W2E-MP](#) [ESPE-24UN-W2E](#) [ESPE-2608-T2-2155+KB+OP](#)