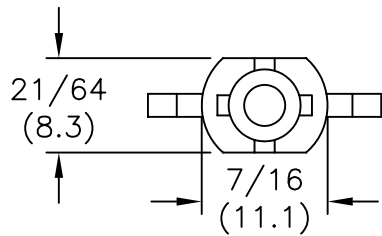


TO PRESS FIT IN A
 $.312 \pm .003$ (7.9 ± 0.08)
 DIA. HOLE, IN A $.25$ (6.4)
 MIN. PANEL THICKNESS



PART NO.	"A"	"B" BUNDLE DIA. RANGE	"C" REF.
BHKL350-4-01	1/4 (6.4)	.30 - .40 (7.6 - 10.2)	1.0 (25.4)
*BHKL350-6-01	3/8 (9.5)		
*BHKL350-8-01	1/2 (12.7)		
BHKL350-10-01	5/8 (15.9)	.40 - .50 (10.2 - 12.7)	1-1/8 (28.6)
BHKL450-4-01	1/4 (6.4)		
BHKL450-6-01	3/8 (9.5)		
BHKL450-8-01	1/2 (12.7)	.70 - .80 (17.8 - 20.3)	1-1/2 (38.1)
BHKL450-10-01	5/8 (15.9)		
BHKL750-4-01	1/4 (6.4)		
BHKL750-6-01	3/8 (9.5)		
BHKL750-8-01	1/2 (12.7)		
BHKL750-10-01	5/8 (15.9)		

*PARTS AVAILABLE BY SPECIAL ORDER ONLY

NOTES:

- MATERIAL: NYLON 6/6 UL 94 V-2 (RMS-01).
 NYLON 6/ UL 94 V-0 (RMS-19).
 AVAILABLE BY SPECIAL ORDER.
- COLOR: NATURAL.

F SEE ECN #1262 FOR CHANGES SK 12.11.06 E SEE ECN #914 FOR CHANGES SK 01.14.05 D SEE ECN #818 FOR CHANGES SM 10.01.04 C CHANGED FILE NUMBER SM 05.31.01 B MAT'L RMS-19 ADDED J.L. 12.18.97 A "C" DIM'S CHANGED; CONV. TO ACAD PB 07.11.95 REV DESCRIPTION ENGR DATE			TITLE: BLIND HOLE KURLY-LOK TOLERANCES UNLESS NOTED .XX=±.010 .XXX=±.005 FRAC=±1/64 ANG=±1°			FILE # BHLK MAT'L: SEE NOTES RE: RICHCO, INC.		DWN: P.B. DT: 07-11-95 APP: DT: RICHCO INC. PO BOX 804238, CHICAGO, 60680 (773) 539-4060		DWG IN IN (MM) FINAL PART # SEE TABLE PRINT TYPE CA	
---	--	--	--	--	--	---	--	--	--	---	--

X-ON Electronics

Largest Supplier of Electrical and Electronic Components

Click to view similar products for [Cable Mounting & Accessories](#) category:

Click to view products by [ESSENTRA](#) manufacturer:

Other Similar products are found below :

[582603-1](#) [009333-000](#) [727844N003](#) [747](#) [809090N001](#) [843188-000](#) [8666](#) [967279N002](#) [DB-11](#) [1300840039](#) [1300900096](#) [1301800416](#)
[1302264450](#) [1300830184](#) [1300830729](#) [1300900039](#) [1301580036](#) [1301850553](#) [1301860939](#) [1302000074](#) [1302261315](#) [1302264431](#)
[1337706-2](#) [APA18-AK](#) [1724](#) [1-787307-1](#) [185491N001](#) [1868](#) [HP-6N](#) [C-202-C](#) [202C221-13-0](#) [CA7308-000](#) [8S23-75FR-CS8184](#) [2684](#) [9648](#)
[3089](#) [988382-000](#) [A72821-000](#) [AA401](#) [173506-000](#) [1823](#) [202C292-13-0](#) [202C302-13-0](#) [2109](#) [300625](#) [3330](#) [3412](#) [356247-1](#) [M9142](#)
[M9143](#)