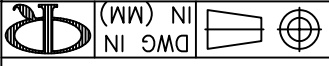


| | | |
|-----|----------------------------------|-------------|
| REV | DESCRIPTION | ENGR DATE |
| F | SEE ECN #1262 FOR CHANGES | SK 12.11.06 |
| E | SEE ECN #914 FOR CHANGES | SM 01.14.05 |
| D | SEE ECN #818 FOR CHANGES | SM 10.01.04 |
| C | CHANGED FILE NUMBER | SM 05.31.01 |
| B | MAT'L RMS-19 ADDED | UL 12.18.97 |
| A | "C" DIM'S CHANGED; CONV. TO ACAD | PB 07.11.95 |

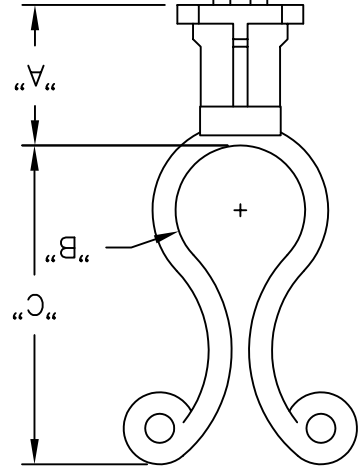
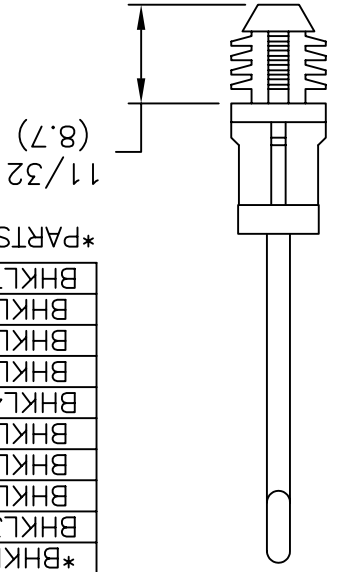
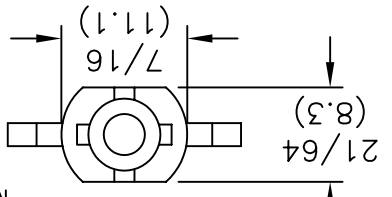
| | | | | |
|--------------|--------------|--------------|-------------------------------|----------------|
| FILE # | BHKL | DWN: P.B. | APP: | FINAL |
| MAT'L: | SEE NOTES | DT: 07-11-95 | DT: | |
| RE: | RICHCO, INC. | RICHCO INC. | PO BOX 804238, CHICAGO, 60680 | (773) 539-4060 |
| ANG=±1° | | | | |
| FRAC=±1/64 | | | | |
| .XXX=±.005 | | | | |
| .XX=±.010 | | | | |
| UNLESS NOTED | | | | |
| TOLERANCES | | | | |



TITLE: BLIND HOLE KURLY-LOK

NOTES:
 1. MATERIAL: NYLON 6/6 UL 94 V-2 (RMS-01).
 NYLON 6/ UL 94 V-0 (RMS-19).
 AVAILABLE BY SPECIAL ORDER.
 2. COLOR: NATURAL.

TO PRESS FIT IN A
 .312±.003 (7.9±0.08)
 DIA. HOLE, IN A .25 (6.4)
 MIN. PANEL THICKNESS



*PARTS AVAILABLE BY SPECIAL ORDER ONLY

| PART NO. | "A" | "B" | BUNDLE DIA. RANGE | "C" | REF. |
|---------------|------------|------------|-------------------|---------------|--------|
| BHKL350-4-01 | 1/4 (6.4) | 3/8 (9.5) | .30 - .40 | (7.6 - 10.2) | 1.0 |
| *BHKL350-6-01 | 3/8 (9.5) | 1/2 (12.7) | .30 - .40 | (7.6 - 10.2) | (25.4) |
| BHKL350-10-01 | 5/8 (15.9) | 1/2 (12.7) | .30 - .40 | (7.6 - 10.2) | (25.4) |
| BHKL450-4-01 | 1/4 (6.4) | 3/8 (9.5) | .40 - .50 | (10.2 - 12.7) | 1-1/8 |
| BHKL450-6-01 | 3/8 (9.5) | 1/2 (12.7) | .40 - .50 | (10.2 - 12.7) | (28.6) |
| BHKL450-8-01 | 1/2 (12.7) | 1/2 (12.7) | .40 - .50 | (10.2 - 12.7) | (28.6) |
| BHKL450-10-01 | 5/8 (15.9) | 1/2 (12.7) | .40 - .50 | (10.2 - 12.7) | (28.6) |
| BHKL750-4-01 | 1/4 (6.4) | 3/8 (9.5) | .70 - .80 | (17.8 - 20.3) | 1-1/2 |
| BHKL750-6-01 | 3/8 (9.5) | 1/2 (12.7) | .70 - .80 | (17.8 - 20.3) | (38.1) |
| BHKL750-8-01 | 1/2 (12.7) | 1/2 (12.7) | .70 - .80 | (17.8 - 20.3) | (38.1) |
| BHKL750-10-01 | 5/8 (15.9) | 1/2 (12.7) | .70 - .80 | (17.8 - 20.3) | (38.1) |

X-ON Electronics

Largest Supplier of Electrical and Electronic Components

Click to view similar products for [Cable Mounting & Accessories](#) category:

Click to view products by [ESSENTRA](#) manufacturer:

Other Similar products are found below :

[HP-4N](#) [582603-1](#) [009333-000](#) [727844N003](#) [809090N001](#) [8109](#) [843188-000](#) [843459N001](#) [843460N003](#) [8666](#) [967279N002](#) [GPQC1/0](#) [DB-11](#) [1300830208](#) [1300840039](#) [1300900026](#) [1300990052](#) [1301740005](#) [1301800121](#) [1301800416](#) [1300830184](#) [1300990149](#) [1301580036](#) [1301720103](#) [1301720135](#) [1301720152](#) [1301720157](#) [1301740009](#) [1301770011](#) [1301850553](#) [1301860939](#) [1302000074](#) [1302264431](#) [1337706-2](#) [APA18-AK](#) [MTX6UTPSRC-C](#) [1-787307-1](#) [185491N001](#) [HP-6N](#) [C-202-C](#) [202C221-13-0](#) [OMTM-S10-C0](#) [205339-4](#) [CA7308-000](#) [8S23-75FR-CS8184](#) [2684](#) [9648](#) [3089](#) [988382-000](#) [A0270164](#)