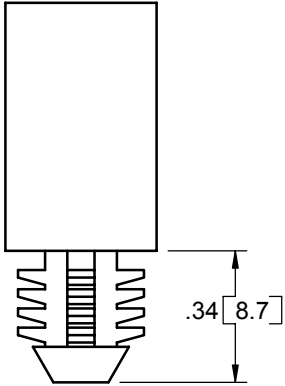
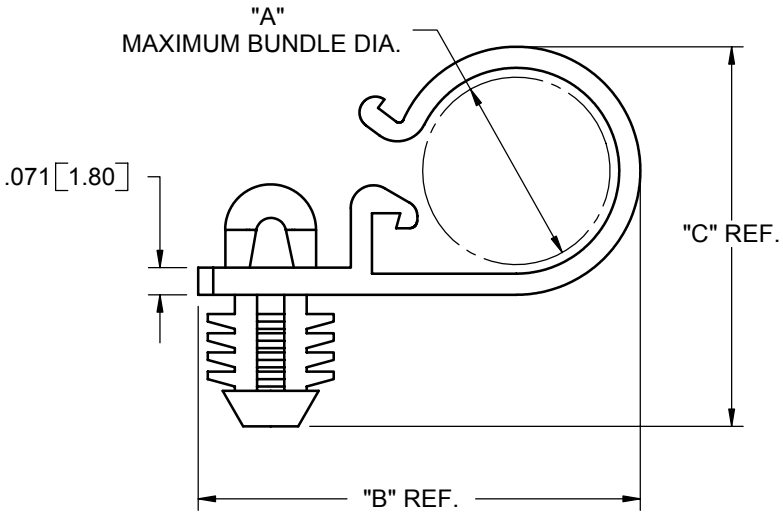
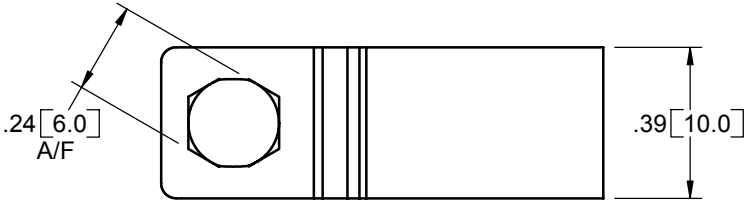


PART NO.	"A" BUNDLE DIA.	DIM. "B"	DIM. "C"
BHLWHC-500-01	1/2 [12.7]	1.15 [29.3]	1.00 [25.4]
BHLWHC-750-01	3/4 [19.0]	1.44 [36.5]	1.34 [34.1]



TO PRESS FIT INTO A .312±.002 [7.92±0.05] DIA. HOLE, IN A .250 [6.35] MINIMUM THICK PANEL

NOTES:
 1. MATERIAL: NYLON 6/6 (RMS-01).
 2. COLOR: NATURAL.

A			RELEASED FOR PRODUCTION (ECN #884)			SM	11/30/04	TITLE: BLIND HOLE LOCKING WIRE HARNESS CLIP					DWG IN IN [MM]		
REV.			DESCRIPTION			ENGR.	DATE	CREATED USING SOLIDWORKS TOLERANCES UNLESS NOTED .XX=±.010 .XXX=±.005 FRAC.=±1/64 ANG.=±1°	FILE #: BHLWHC	DWN: SM	APP: BR	FINAL			
								SHEET: 1 OF 1	SHEET SIZE: A	DT: 11/30/04	CHKD: RDG	PART #		PRINT TYPE	
								RE: RICHCO, INC.	RICHCO, INC. ENG@RICHCO-INC.COM (773) 539-4060		SEE TABLE		CA		

X-ON Electronics

Largest Supplier of Electrical and Electronic Components

Click to view similar products for [Cable Mounting & Accessories](#) category:

Click to view products by [ESSENTRA](#) manufacturer:

Other Similar products are found below :

[582603-1](#) [009333-000](#) [727844N003](#) [747](#) [809090N001](#) [843188-000](#) [8666](#) [967279N002](#) [DB-11](#) [1300840039](#) [1300900096](#) [1301800416](#)
[1302264450](#) [1300830184](#) [1300830729](#) [1300900039](#) [1301580036](#) [1301850553](#) [1301860939](#) [1302000074](#) [1302261315](#) [1302264431](#)
[1337706-2](#) [APA18-AK](#) [1724](#) [1-787307-1](#) [185491N001](#) [1868](#) [HP-6N](#) [C-202-C](#) [202C221-13-0](#) [CA7308-000](#) [8S23-75FR-CS8184](#) [2684](#) [9648](#)
[3089](#) [988382-000](#) [A72821-000](#) [AA401](#) [173506-000](#) [1823](#) [202C292-13-0](#) [202C302-13-0](#) [2109](#) [300625](#) [3330](#) [3412](#) [356247-1](#) [M9142](#)
[M9143](#)