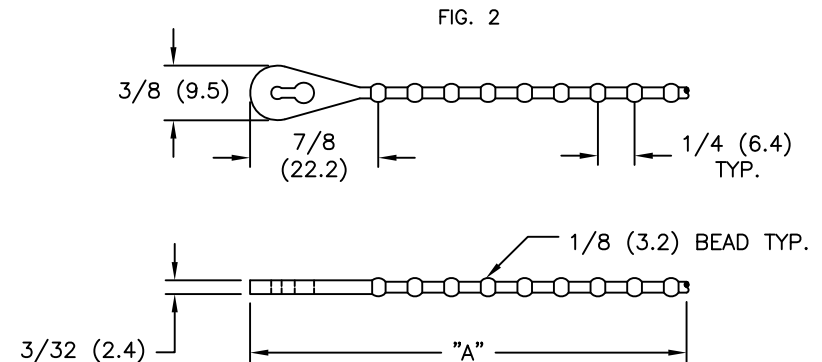
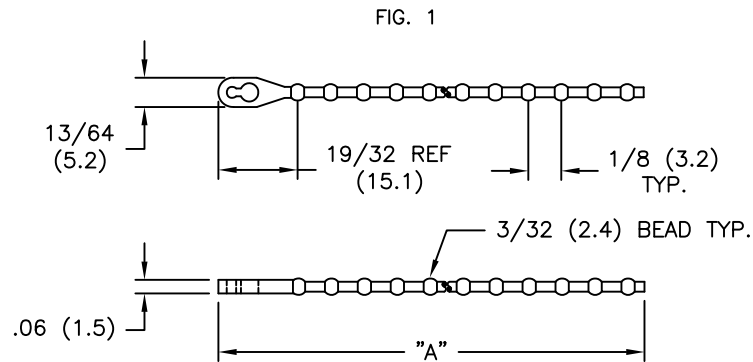


PART NO.	LENGTH "A" APPROX.	*MAX. BUNDLE DIA. REF.	MATERIAL: POLYPROPYLENE (RMS-10); COLOR: RED (-RD)	MATERIAL: POLYPROPYLENE (RMS-10); COLOR: YELLOW (-YL)	MATERIAL: POLYPROPYLENE (RMS-10); COLOR: BLUE (-BL)	MATERIAL: POLYPROPYLENE (RMS-10); COLOR: BLACK (-BK)	MATERIAL: NYLON 6/6 (RMS-01); COLOR: NATURAL AND BLACK	FIGURE NO.		
BT-2	2.50 [63.5]	9/16 [14.3]	STANDARD	STANDARD	STANDARD	SPECIAL	SPECIAL	1		
BT-4	4.00 [101.6]	1.00 [25.4]				STANDARD	2			
BT-5	5.00 [127]	1-1/4 [31.8]				SPECIAL				
BT-6	6.00 [152.4]	1-3/4 [44.5]								
BT-8	8.75 [222.3]	2-3/8 [60.3]								
BT-10	10.75 [273.1]	3-1/8 [85.7]								
BT-12	12.75 [323.9]	3-5/8 [92.1]								

\* ALL MAX. BUNDLE DIA. NEED 3 BEADS ENGAGEMENT.



D	SEE CO 200695	SK 07.26.11
C	SEE ECN #1089 FOR CHANGES	SK 11/01/05
B	ADDED DIM. .06 TO FIG. 1, RMS NO. TO MAT'L NOTE AND CHANGED FILE NO.	SM 08.03.01
A	MAX. BUNDLE DIA. ADDED	J.L. 9.17.97
REV	DESCRIPTION	ENGR DATE

TITLE: BEADED TIES				DWG IN IN (MM) FINAL			
TOLERANCES UNLESS NOTED .XX=±.010 .XXX=±.005 FRAC=±1/64 ANG=±1°	FILE # BT	DWN: JB/PB	APP:	PART #		PRINT TYPE	
	MAT'L: SEE TABLE	DT: 11-07-95	DT:	SEE TABLE		CA	
	RE: RICHCO, INC.	RICHCO INC. PO BOX 804238, CHICAGO, 60680 (773) 539-4060					

## X-ON Electronics

Largest Supplier of Electrical and Electronic Components

*Click to view similar products for [Cable Ties](#) category:*

*Click to view products by [ESSENTRA](#) manufacturer:*

Other Similar products are found below :

[65034-C](#) [65037-C](#) [770-1751-10](#) [REL50L0C2](#) [20093-0](#) [SF600-120X](#) [SJ-3463](#) [SJ3518FR-1x50](#) [SJ3526N-Beige-2"x50yd](#) [SJ3526N BLACK](#)  
[58" X 50YD](#) [SJ3571](#) [SJ-3571-1"x50yd-Black](#) [PLT2S-C4](#) [34-455-C](#) [3722](#) [561-B110120](#) [561-N3510](#) [TYZ528M](#) [34-463-C](#) [URT20S-M](#)  
[06226](#) [08350-0](#) [08600-0](#) [08376-0](#) [10036-0](#) [10037-0](#) [10325-0](#) [10362-0](#) [10606-0](#) [561-EZ250](#) [561-EZ625](#) [SJ3527N-Beige-2"x50yd](#) [SJ3527N-](#)  
[LOOP-BLACK-1](#) [SJ3572-2"x50yd-Black](#) [CF5625-000](#) [V03HK](#) [65004-C](#) [65005-C](#) [65007-C](#) [65036-C](#) [157-00039](#) [770-1708](#) [770-1753-10](#)  
[65035-C](#) [770-1752](#) [SPNY-041-9](#) [SF400-120X](#) [3719](#) [08582-0](#) [08386-0](#)