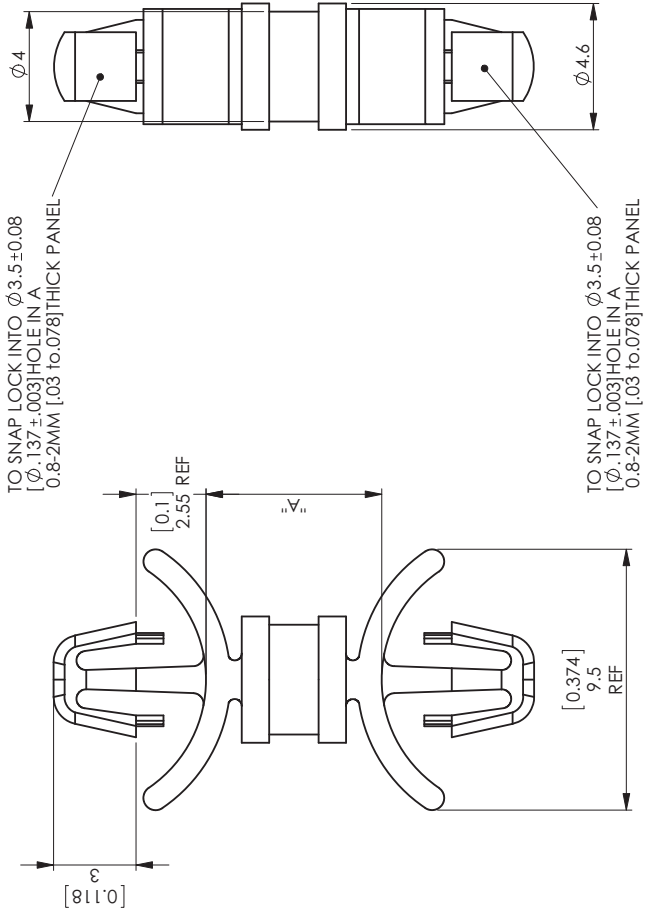


REV.	MODIFICATION.	DATE	DRN
01	PRODUCTION RELEASE	22/08/11	SF



ALTERNATE UNITS FOR REFERENCE ONLY

INFORMATION CONTAINED IN THIS DOCUMENT IS CONFIDENTIAL TO RICHCO INTERNATIONAL Co., Ltd. AND MAY NOT BE DISCLOSED OR REPRODUCED IN WHOLE OR PART WITHOUT THEIR WRITTEN CONSENT.

NYLON 6/6 UL94 V-2 (RMS-01)	NYLON 6/6 UL94 V-0 (RMS-19)	"A" STANDOFF HEIGHT ±0.4
DLCBS5-3-01	DLCBS5-3-19	4.8 [.19]
DLCBS5-4-01	DLCBS5-4-19	6.4 [.25]
DLCBS5-5-01	DLCBS5-5-19	7.9 [.31]
DLCBS5-6-01	DLCBS5-6-19	9.5 [.37]
DLCBS5-7-01	DLCBS5-7-19	11.1 [.44]
DLCBS5-8-01	DLCBS5-8-19	12.7 [.50]
DLCBS5-9-01	DLCBS5-9-19	14.3 [.56]
DLCBS5-10-01	DLCBS5-10-19	15.9 [.63]
COLOUR: NATURAL (OTHER COLOURS AVAILABLE BY SPECIAL ORDER)		

RICHCO, INC.
WWW.RICHCO-INC.COM

MATERIAL:
SEE TABLE

COLOUR:
SEE TABLE

DESCRIPTION: DUAL LOCKING CIRCUIT BOARD SUPPORT TYPE 5

PART No:
SEE TABLE

DRG No:
011-086

NPR No:
EU11-0013

THIRD ANGLE
GENERAL TOLERANCES ±0.25
UNLESS OTHERWISE STATED
1. DECIMAL PLACES ±
2. DECIMAL PLACES ±
ANGULAR ±1°

DRN
NB

DATE
22/08/11

CHKD
SF/TC

DATE
22/08/11

SCALE
NTS

SHEET No.
1 OF 1

FORM No. 0143/00

X-ON Electronics

Largest Supplier of Electrical and Electronic Components

Click to view similar products for [Circuit Board Hardware - PCB category](#):

Click to view products by [ESSENTRA manufacturer](#):

Other Similar products are found below :

[8919-0-00-15-00-00-03-0](#) [0135-0-15-01-30-27-04-0](#) [5970-1-15-01-32-14-04-0](#) [0149-0-15-15-30-27-04-0](#) [7305-0-15-15-47-14-10-0](#) [MLN](#)
[150/1 BLACK](#) [8579-0-15-80-11-27-10-0](#) [8579-1-15-15-11-27-10-0](#) [8830-0-15-01-22-14-10-0](#) [8836-0-00-21-00-00-03-0](#) [PRUEF 1 RED](#)
[PRUEF 2 RED](#) [9976-0-00-00-00-00-03-0](#) [PW1616](#) [1215-3-05-00-00-00-01-0](#) [1231](#) [1303-0-15-15-47-14-04-0](#) [1404-3](#) [1404-4](#) [1406-4](#) [1407-3](#)
[1407-4](#) [1408-3](#) [1424-4](#) [1427-3](#) [1419-4](#) [1426-4](#) [MPS 1 BLACK](#) [1548-103](#) [1938-0-00-00-00-00-03-0](#) [1942-0-00-00-00-00-03-0](#) [2101-3-](#)
[00-44-00-00-07-0](#) [2108-2-00-50-00-00-07-0](#) [2109-2-00-44-00-00-07-0](#) [2110-2-00-44-00-00-07-0](#) [2111-2-00-00-00-00-07-0](#) [2113-4-00-44-00-](#)
[00-07-0](#) [2301-3-00-44-00-00-07-0](#) [2308-1-00-50-00-00-07-0](#) [2313-2-00-00-00-00-07-0](#) [2315-2-01-44-00-00-07-0](#) [2317-2-00-50-00-00-07-0](#)
[2333-1-00-50-00-00-07-0](#) [9000-0-00-00-00-00-03-0](#) [2506-2-00-50-00-00-07-0](#) [2507-2-01-44-00-00-07-0](#) [2508-2-00-44-00-00-07-0](#) [2561-2-](#)
[00-44-00-00-07-0](#) [9220](#) [9234-0-15-15-30-14-10-0](#)