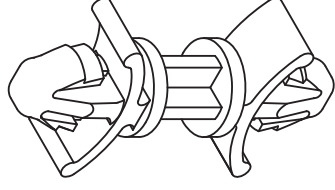
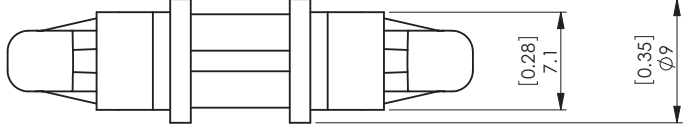
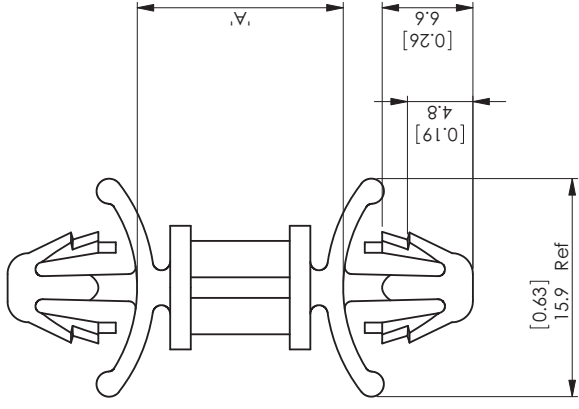


REV.	MODIFICATION.	DATE	DRN
01	PRODUCTION RELEASE	02/09/09	OW



ALTERNATE UNITS FOR REFERENCE ONLY

INFORMATION CONTAINED IN THIS DOCUMENT IS CONFIDENTIAL TO RICHCO INTERNATIONAL Co. Ltd. AND MAY NOT BE DISCLOSED OR REPRODUCED IN WHOLE OR PART WITHOUT THEIR WRITTEN CONSENT.

RICHCO, INC.
WWW.RICHCO-INC.COM

ALL DIMENSIONS IN mm
GENERAL TOLERANCES: ±0.25
UNLESS OTHERWISE STATED
1. DECIMAL PLACES ±
2. DECIMAL PLACES ±
ANGULAR ±1°



Material: Nylon 6/6 UL94 V-2 (RMS-01)	Material: Nylon 6/6 UL94 V-0 (RMS-19)	'A' DIM	HOLE Ø	PANEL THICKNESS
DLCBSHD-10M-01	DLCBSHD-10M-19	10 [0.39]		
DLCBSHD-20M-01	DLCBSHD-20M-19	20 [0.79]		
DLCBSHD-25M-01	DLCBSHD-25M-19	25 [0.98]	6.30 ±0.05 [0.25 ±0.002]	0.8 - 2.2 [0.03 - 0.09]
DLCBSHD-30M-01	DLCBSHD-30M-19	30 [1.18]		
DLCBSHD-35M-01	DLCBSHD-35M-19	35 [1.38]		

MATERIAL: NYLON 6/6 UL94 V-2 (RMS-01)
COLOUR: NATURAL

DESCRIPTION: HEAVY DUTY DUAL LOCKING CIRCUIT BOARD SUPPORT
PART No: SEE TABLE

DRG No: 09-080
NPR No: EU09-0048
SHEET SIZE: A4

DRN: OW
DATE: 13/08/09
CHKD: TC
DATE: 13/08/09
SCALE: NTS
SHEET No: 1 OF 1

FORM No. 0143/00

X-ON Electronics

Largest Supplier of Electrical and Electronic Components

Click to view similar products for [Circuit Board Hardware - PCB category](#):

Click to view products by [ESSENTRA manufacturer](#):

Other Similar products are found below :

[8919-0-00-15-00-00-03-0](#) [0135-0-15-01-30-27-04-0](#) [5970-1-15-01-32-14-04-0](#) [0149-0-15-15-30-27-04-0](#) [7305-0-15-15-47-14-10-0](#) [MLN](#)
[150/1 BLACK](#) [8579-0-15-80-11-27-10-0](#) [8579-1-15-15-11-27-10-0](#) [8830-0-15-01-22-14-10-0](#) [8836-0-00-21-00-00-03-0](#) [PRUEF 1 RED](#)
[PRUEF 2 RED](#) [9976-0-00-00-00-00-03-0](#) [PW1616](#) [1215-3-05-00-00-00-01-0](#) [1231](#) [1303-0-15-15-47-14-04-0](#) [1404-3](#) [1404-4](#) [1406-4](#) [1407-3](#)
[1407-4](#) [1408-3](#) [1424-4](#) [1427-3](#) [1419-4](#) [1426-4](#) [MPS 1 BLACK](#) [1548-103](#) [1938-0-00-00-00-00-03-0](#) [1942-0-00-00-00-00-03-0](#) [2101-3-](#)
[00-44-00-00-07-0](#) [2108-2-00-50-00-00-07-0](#) [2109-2-00-44-00-00-07-0](#) [2110-2-00-44-00-00-07-0](#) [2111-2-00-00-00-00-07-0](#) [2113-4-00-44-00-](#)
[00-07-0](#) [2301-3-00-44-00-00-07-0](#) [2308-1-00-50-00-00-07-0](#) [2313-2-00-00-00-00-07-0](#) [2315-2-01-44-00-00-07-0](#) [2317-2-00-50-00-00-07-0](#)
[2333-1-00-50-00-00-07-0](#) [9000-0-00-00-00-00-03-0](#) [2506-2-00-50-00-00-07-0](#) [2507-2-01-44-00-00-07-0](#) [2508-2-00-44-00-00-07-0](#) [2561-2-](#)
[00-44-00-00-07-0](#) [9220](#) [9234-0-15-15-30-14-10-0](#)