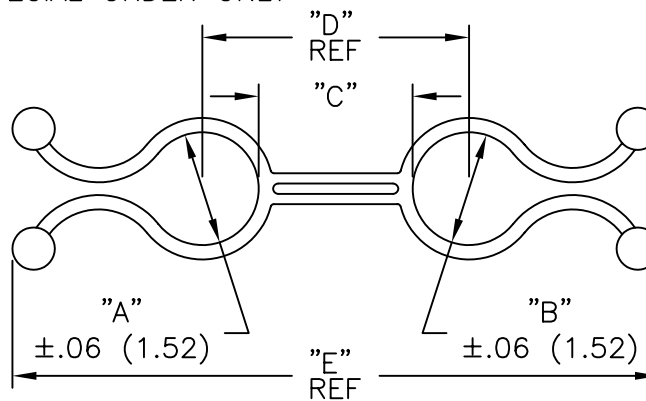


PART NO.	DIM. "A" BUNDLE DIA. RANGE	DIM. "B" BUNDLE DIA. RANGE	DIM. "C" BUNDLE TO BUNDLE	DIM. "D" REF. CENTER TO CENTER	DIM. "E" REF. OVER-ALL LENGTH
DTL2525-4-01	.20-.30 (5.08-7.62)	.20-.30 (5.08-7.62)	1/4 (6.35)	.50 (12.70)	1.92 (48.77)
DTL2525-12-01			3/4 (19.05)	1.00 (25.40)	2.42 (61.47)
DTL2525-20-01			1-1/4 (31.75)	1.50 (38.10)	2.92 (74.18)
DTL2525-28-01			1-3/4 (44.45)	2.00 (50.80)	3.42 (86.87)
DTL3535-4-01	.30-.40 (7.62-10.16)	.30-.40 (7.62-10.16)	1/4 (6.35)	.60 (15.24)	2.18 (55.37)
DTL3535-12-01			3/4 (19.05)	1.10 (27.94)	2.68 (68.07)
DTL3535-20-01			1-1/4 (31.75)	1.60 (40.64)	3.18 (80.77)
DTL3535-28-01			1-3/4 (44.45)	2.10 (53.34)	3.68 (93.47)
*DTL4545-4-01	.40-.50 (10.16-12.70)	.40-.50 (10.16-12.70)	1/4 (6.35)	.70 (17.78)	2.42 (61.47)
*DTL4545-12-01			3/4 (19.05)	1.20 (30.48)	2.92 (74.17)
*DTL4545-20-01			1-1/4 (31.75)	1.70 (43.18)	3.42 (86.87)
*DTL4545-28-01			1-3/4 (44.45)	2.20 (55.88)	3.92 (99.57)
*DTL5555-4-01	.50-.60 (12.70-15.24)	.50-.60 (12.70-15.24)	1/4 (6.35)	.80 (20.32)	2.65 (67.31)
*DTL5555-12-01			3/4 (19.05)	1.30 (33.02)	3.15 (80.01)
*DTL5555-20-01			1-1/4 (31.75)	1.80 (45.72)	3.65 (92.71)
*DTL5555-28-01			1-3/4 (44.45)	2.30 (58.42)	4.15 (105.41)
*DTL6565-4-01	.60-.70 (15.24-17.79)	.60-.70 (15.24-17.79)	1/4 (6.35)	.90 (22.86)	2.88 (73.15)
*DTL6565-12-01			3/4 (19.05)	1.40 (35.56)	3.38 (85.85)
*DTL6565-20-01			1-1/4 (31.75)	1.90 (48.26)	3.88 (98.55)
*DTL6565-28-01			1-3/4 (44.45)	2.40 (60.96)	4.38 (111.25)
*DTL7575-4-01	.70-.80 (17.79-20.32)	.70-.80 (17.79-20.32)	1/4 (6.35)	1.00 (25.40)	3.10 (78.74)
*DTL7575-12-01			3/4 (19.05)	1.50 (38.10)	3.60 (91.44)
*DTL7575-20-01			1-1/4 (31.75)	2.00 (50.80)	4.10 (104.14)
*DTL7575-28-01			1-3/4 (44.45)	2.50 (63.50)	4.60 (116.84)

*PARTS AVAILABLE BY SPECIAL ORDER ONLY



NOTES:

- MATERIAL: NYLON 6/6 (RMS-01).
FLAME RETARDANT NYLON (RMS-19),
BY SPECIAL ORDER ONLY.
- COLOR: NATURAL.

E			TITLE: DUAL TWIST-LOCK				DWG IN		PR
SEE ECN #914 FOR CHANGES	SK 01.14.05		FILE # DTL		DWN: P.B.	APP:	IN (MM)	FINAL	
SEE ECN #818 FOR CHANGES	SM 10.01.04		MAT'L: SEE NOTES		DT: 03-10-95	DT:	PART #		
ADDED RMS-19 TO MAT'L NOTE AND CHANGED FILE NO.	SM 09.17.01		RE: RICHCO, INC.		RICHCO INC.		SEE TABLE		
TOL. FOR "B" WAS ±.06 (1.62)	PB 08.17.95				PO BOX 804238, CHICAGO, 60680		PRINT TYPE		
CONVERTED TO ACAD	PB 03.10.95				(773) 539-4060		CA		
DESCRIPTION	ENGR DATE								

X-ON Electronics

Largest Supplier of Electrical and Electronic Components

Click to view similar products for [Cable Mounting & Accessories](#) category:

Click to view products by [ESSENTRA](#) manufacturer:

Other Similar products are found below :

[582603-1](#) [009333-000](#) [727844N003](#) [747](#) [809090N001](#) [843188-000](#) [8666](#) [967279N002](#) [DB-11](#) [1300840039](#) [1300900096](#) [1301800416](#)
[1302264450](#) [1300830184](#) [1300830729](#) [1300900039](#) [1301580036](#) [1301850553](#) [1301860939](#) [1302000074](#) [1302261315](#) [1302264431](#)
[1337706-2](#) [APA18-AK](#) [1724](#) [1-787307-1](#) [185491N001](#) [1868](#) [HP-6N](#) [C-202-C](#) [202C221-13-0](#) [CA7308-000](#) [8S23-75FR-CS8184](#) [2684](#) [9648](#)
[3089](#) [988382-000](#) [A72821-000](#) [AA401](#) [173506-000](#) [1823](#) [202C292-13-0](#) [202C302-13-0](#) [2109](#) [300625](#) [3330](#) [3412](#) [356247-1](#) [M9142](#)
[M9143](#)