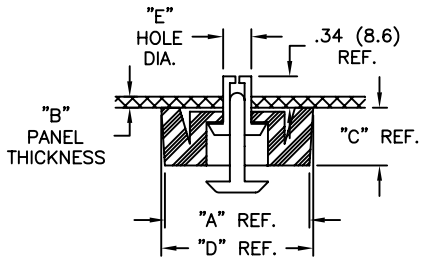


FIGURE 1



WITH PUSH RIVET

FIGURE 2

PART NO.	FOOT MAT'L	"A" REF.	"B" THKS. RANGE	"C" REF.	"D" REF.	"E" HOLE DIAMETER	FIGURE
FF-001B	RMS-76	.79 (20)	.039-.091 (1.0-2.3)	.55 (14)	.95 (24)	.197-.201(5.0-5.1)	1
FF-004B		.71 (18)					
FF-003-P3x5.5B	RMS-42	.53 (13.5)	.031-.071 (0.8-1.8)	.22 (5.5)	.56 (14.2)	.122 (3.1)-.126 (3.2)	2
FF-005-P4x5B	RMS-76	.79 (20)	.031-.071 (0.8-1.8)	.17 (4.2)	.83 (21)	.161-.165 (4.1-4.2)	
FF-005-P4x6B			.071-.111 (1.8-2.8)				
FF-005-P4x7B			.114-.146 (2.9-3.7)				
FF-005-P4x8B			.150-.189 (3.8-4.8)				
FF-006-P4x6B			.024-.039 (0.6-1.0)				
FF-006-P4x7B			.039-.079 (1.0-2.0)				
FF-006-P4x8B	.079-.118 (2.0-3.1)	.24 (6)	.59 (15)	.200 (5.1)-.205 (5.2)			
FF-006-P5x6.5B	.031-.047 (0.8-1.2)						
FF-006-P5x7.5B	.051-.091 (1.3-2.3)						
FF-008-P4x6B	RMS-76	.79 (20)	.031-.071 (0.8-1.8)	.31 (8)	.83 (21)	.161-.165 (4.1-4.2)	
FF-008-P4x7B			.075-.110 (1.9-2.8)				
FF-008-P4x8B			.114-.157 (2.9-4.0)				
FF-009-P4x6B			0-.031 (0-0.8)				
FF-009-P4x7B			.031-.079 (0.8-2.0)				
FF-009-P4x8B			.083-.118 (2.1-3.0)				
FF-010-P4x7B	.55 (14)	.039-.079 (1.0-2.0)	.35 (9)	.59 (15)	.161-.165 (4.1-4.2)		
FF-010-P4x8B						.079-.118 (2.0-3.1)	
FF-013-P3.5x4.5B	.39 (10)	.020-.047 (0.5-1.2)	.16 (4)	.43 (10.8)	.142-.146 (3.6-3.7)		
FF-013-P3.5x5.5B						.047-.079 (1.2-2.0)	
FF-013-P3.5x6.0B						.059-.087 (1.5-2.2)	
FF-013-P3.5x7.0B						.098-.126 (2.5-3.2)	

NOTES:

1. MATERIAL:

FIGURE 1: DRIVE SCREW: ACETAL (RMS-39)
GROMMET: NYLON 6 (RMS-52)

FIGURE 2: PUSH RIVET (PIN AND GROMMET): NYLON 6 (RMS-52)

2. COLOR: BLACK

J	SEE ECN #1315 FOR CHANGES	SK 04.16.07	TITLE: FAST FEET				DWG IN IN (MM)	FINAL	PRINT TYPE CA
I	SEE ECN #863 FOR CHANGES	SM 10.04.04	TOLERANCES UNLESS NOTED .XX=±.010 .XXX=±.005 FRAC=±1/64 ANG=±1°	FILE # FF	DWN: P.B.	APP:			
H	SEE ECN #714 FOR CHANGE DETAILS	SM 10.09.03		MAT'L: SEE NOTES	DT: 04-29-94	DT:	PART #		
G	SEE ECN #591 FOR CHANGE DETAILS	SM 03.04.03		RE: RICHCO, INC.	RICHCO INC. PO BOX 804238, CHICAGO, 60680 (773) 539-4060		SEE TABLE		
F	SEE ECN #471 FOR CHANGE DETAILS	SM 09.24.02							
-	SEE ENGINEERING FOR REV A-E	-							
REV	DESCRIPTION	ENGR DATE							

X-ON Electronics

Largest Supplier of Electrical and Electronic Components

Click to view similar products for [Mounting Fixings](#) category:

Click to view products by [ESSENTRA](#) manufacturer:

Other Similar products are found below :

[5912235-2](#) [007541](#) [627](#) [M3783-7001](#) [71-074914-006](#) [75-69211-3P](#) [75-69214-6P](#) [75-69220-27S](#) [75-69224-5S](#) [7717-8DAP](#) [85043GULPR](#)
[85047GULPT](#) [85048GBESR](#) [FPK-02-R10](#) [PMS27488-001-01](#) [1-18023-0](#) [H-118-2](#) [DB1](#) [1302030464](#) [DC37-22-21PX](#) [1302010957](#)
[1302263564](#) [1302340393](#) [1404-0016-78](#) [14540](#) [1561-60](#) [1566](#) [1566](#) [BR16A](#) [HS4737-2001 REV G](#) [HS5659MB98PN](#) [NT20SATT01](#)
[201C5058-01-201 REV E](#) [22594-8](#) [KBB-141](#) [89078GBEPR](#) [89078GBESR](#) [915060](#) [SF4011-60101](#) [97-CS-50](#) [1671](#) [1855-54](#) [T-2085-SP](#)
[20800240002](#) [21899-4](#) [2193](#) [2518](#) [25745-1](#) [H-118-1](#) [354467](#)