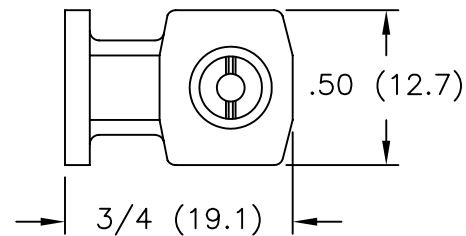
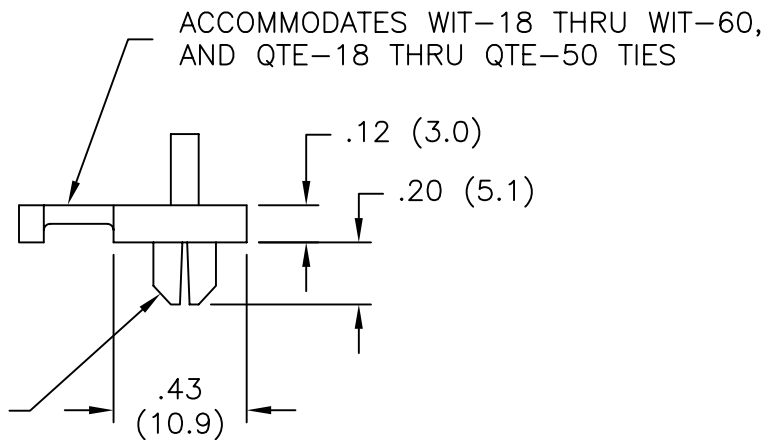


TYPICAL APPLICATION

TO FIT IN A  $.196 \pm .002$   
 $(5.0 \pm 0.05)$  DIA. HOLE,  
 $.030 - .125$   $(0.8 - 3.2)$  PANEL THCK.



NOTES:

1. MATERIAL: NYLON 6/6, (RMS-01).
2. COLOR: YELLOW.  
 COLOR BLACK AVAILABLE BY SPECIAL ORDER.  
 TO ORDER, ADD "BK" TO THE END OF PART NO.

E	SEE ECN #1188 FOR CHANGES	SK 06.29.06	TITLE: WIRE TIE HOLDER						DWG IN	
D	SEE ECN #1124 FOR CHANGES	SK 01.24.06							IN (MM)	
C	UPDATED NOTES AND CHANGED FILE NO.	SM 06.12.02	TOLERANCES	FILE # FTH-22	DWN: P.B.	APP:	FINAL			
B	CABLE TIE NOTE UPDATED TO GRAPH	JL 01.04.00	UNLESS NOTED	MAT'L: SEE NOTES	DT: 06-09-94	DT:	PART #		PRINT	
A	NOTE 3 ADDED, DIM .196 WAS .202, DIM 3/4 WAS .74, DIM .06 WAS .12, DIM .12 ADDED ISO. ADDED; P/N FTH-22-01 WAS FTH-22	PB 08.01.94	.XX=±.010 .XXX=±.005 FRAC=±1/64 ANG=±1°	RE: RICHCO, INC.	RICHCO INC. PO BOX 804238, CHICAGO, 60680 (773) 539-4060		FTH-22-01			TYPE CA
REV	DESCRIPTION	ENGR DATE								

## X-ON Electronics

Largest Supplier of Electrical and Electronic Components

*Click to view similar products for [Cable Tie Mounts](#) category:*

*Click to view products by [ESSENTRA](#) manufacturer:*

Other Similar products are found below :

[3-350087-0](#) [CTB75X75BKA-C](#) [561-EZAB580T](#) [561-EZS375B40](#) [561-TA250125](#) [08443-0](#) [10035-0](#) [561-TA00600](#) [1689174-1](#) [08445-0](#)  
[10351-0](#) [561-TA250125B](#) [20015-0](#) [10350-0](#) [10029-0](#) [08484-0](#) [08446-0](#) [08318-0](#) [PAM075NY-A-C](#) [MTH1-3](#) [10044](#) [151-01802](#) [151-11319](#)  
[151-11819](#) [PLWP1SB-D](#) [PLWP1M-C](#) [PLWP2SA-D](#) [PLWP2SB-D](#) [PLWP2S-C](#) [PLWP1S-D](#) [PLWP1M-D](#) [TA1S8-C](#) [ABM3H-A-L](#) [ABM3H-](#)  
[AT-T0](#) [EMS-A-C0](#) [EMSK3-1-3-0](#) [10079](#) [10030](#) [151-10930](#) [151-10920](#) [3590](#) [151-28320](#) [151-28349](#) [151-10914](#) [151-10904](#) [151-10916](#) [151-](#)  
[10906](#) [06297](#) [CTB75X75NTA-C](#) [792](#)