

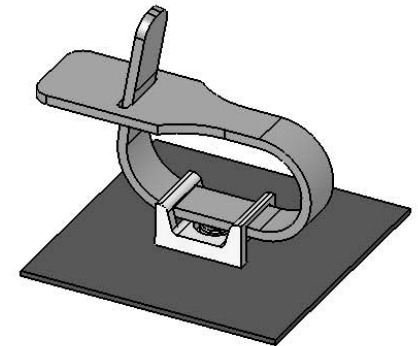
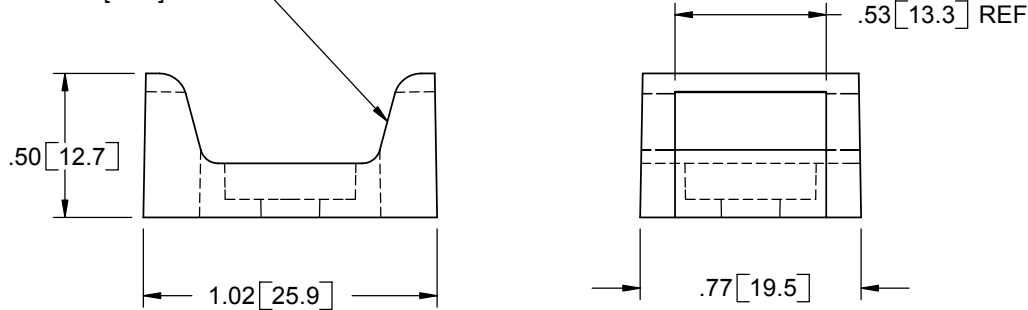
PART NO.	DIA. "D"	MOUNTING SCREW
FTH-27-RS-01	.205 [5.2]	#10 [M5] SCREW OR RIVETS
FTH-27-12-01	.230 [5.8]	#10 [M5] & #12 [M5] SCREWS

(USE PAN HEAD OD BINDER HEAD SCREWS)

MOUNTING RIVETS FOR FTH-27-RS

USE RIVET NO.	HOLE DIA. (CHASSIS)	FOR PANEL THICKNESS RANGE
SR-5055	.201 [5.1]	.035-.075 [0.9-1.9]
SR-5065	.201 [5.1]	.075-.114 [1.9-2.9]
SR-5075	.201 [5.1]	.114-.154 [2.9-3.9]
SR-5085	.201 [5.1]	.154-.193 [3.9-4.9]
SR-5095	.201 [5.1]	.193-.232 [4.9-5.9]
SR-5105	.201 [5.1]	.232-.272 [5.9-6.9]

ACCOMODATES "RKW" SERIES TIES  
UP TO 1/2 [12.7] WIDE



NOTES:

1. MATERIAL: NYLON 6/6 UL 94 V-2 (RMS-01).
2. MATERIAL: NYLON 6/6 UL 94 V-0 (RMS-19), AVAILABLE BY SPECIAL ORDER ONLY. TO ORDER USE P/N: FTH-27-XX-19.
3. COLOR: NATURAL.

TITLE: <b>FLAT TIE HOLDER</b>					DWG IN IN [MM]	
CREATED USING SOLIDWORKS	FILE #: FTH-27	DWN: SK	APP: -	FINAL		
TOLERANCES UNLESS NOTED .XX=±.010 .XXX=±.005 FRAC.=±1/64 ANG.=±1°	SHEET: 1 OF 1	SHEET SIZE: A	DT: 11/02/05	CHKD: -	PART #	PRINT TYPE
REV.	DESCRIPTION	ENGR.	DATE	RE: RICHCO, INC.	RICHCO, INC. ENG@RICHCO-INC.COM (773) 539-4060	SEE TABLE <b>CA</b>

REV.	DESCRIPTION	ENGR.	DATE
D	COMPLETELY REDRAWN, SEE ECN #1090	SK	11/02/05
-	SEE ENGINEERING FOR REV A-C	-	-

## X-ON Electronics

Largest Supplier of Electrical and Electronic Components

*Click to view similar products for [Cable Tie Mounts](#) category:*

*Click to view products by [ESSENTRA](#) manufacturer:*

Other Similar products are found below :

[3-350087-0](#) [CTB75X75BKA-C](#) [561-EZAB580T](#) [561-EZS375B40](#) [561-TA250125](#) [08443-0](#) [10035-0](#) [561-TA00600](#) [1689174-1](#) [08445-0](#)  
[10351-0](#) [561-TA250125B](#) [20015-0](#) [10350-0](#) [10029-0](#) [08484-0](#) [08446-0](#) [08318-0](#) [PAM075NY-A-C](#) [MTH1-3](#) [10044](#) [151-11319](#) [151-11819](#)  
[PLWP1SB-D](#) [PLWP1M-C](#) [PLWP2SA-D](#) [PLWP2SB-D](#) [PLWP2S-C](#) [PLWP1S-D](#) [PLWP1M-D](#) [TA1S8-C](#) [ABM3H-A-L](#) [ABM3H-AT-T0](#)  
[EMS-A-C0](#) [EMSK3-1-3-0](#) [10079](#) [10030](#) [151-10930](#) [151-10920](#) [3590](#) [151-28320](#) [151-28349](#) [151-28530](#) [151-10914](#) [151-10904](#) [151-10916](#)  
[151-10906](#) [06297](#) [CTB75X75NTA-C](#) [792](#)