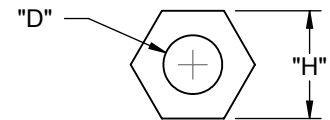
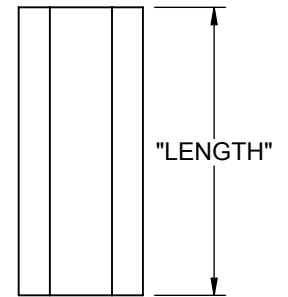


NOTES:  
 1. MATERIAL: CPVC (RMS-11)  
 2. COLOR: LIGHT GRAY.

FOR #4 SCREW		FOR #6 SCREW		FOR #8 SCREW	
PART NO.	LENGTH ±.015[±0.38]	PART NO.	LENGTH ±.010 [±0.25]	PART NO.	LENGTH ±.010 [±0.25]
HS4-3	3/8 [9.5]	-	-	-	-
HS4-4	1/2 [12.7]	HS6-4	1/2 [12.7]	-	-
HS4-5	5/8 [15.9]	HS6-5	5/8 [15.9]	HS8-5	5/8 [15.9]
HS4-6	3/4 [19.1]	HS6-6	3/4 [19.1]	HS8-6	3/4 [19.1]
HS4-7	7/8 [22.2]	HS6-7	7/8 [22.2]	HS8-7	7/8 [22.2]
HS4-8	1 [25.4]	HS6-8	1 [25.4]	HS8-8	1 [25.4]
HS4-10	1-1/4 [31.8]	HS6-10	1-1/4 [31.8]	HS8-10	1-1/4 [31.8]
HS4-12	1-1/2 [38.1]	HS6-12	1-1/2 [38.1]	HS8-12	1-1/2 [38.1]
HS4-14	1-3/4 [44.5]	HS6-14	1-3/4 [44.5]	HS8-14	1-3/4 [44.5]
HS4-16	2 [50.8]	HS6-16	2 [50.8]	HS8-16	2 [50.8]
-	-	-	-	HS8-18	2-1/4 [57.2]
-	-	-	-	HS8-20	2-1/2 [63.5]
-	-	-	-	HS8-22	2-3/4 [69.9]
-	-	-	-	HS8-24	3 [76.2]

PART NO.	"H"	"D" ±.005 [±0.13]
HS4	.187±.006 [4.8±0.15]	.102 [2.6]
HS6	.250±.008 [6.4±0.20]	.110 [2.8]
HS8	.375±.010 [9.5±0.25]	.141 [3.6]



TITLE: <b>HEX SPACER STANDOFFS</b>						DWG IN [MM]	
CREATED USING SOLIDWORKS		FILE #: HS	DWN: SM	APP: -		FINAL	
TOLERANCES UNLESS NOTED		SHEET: 1 OF 2	SHEET SIZE: A	DT: 07/02/04	CHKD: -	PART #	
.XX=±.010 .XXX=±.005 FRAC.=±1/64 ANG.=±1°		RE: RICHCO, INC.		RICHCO, INC. ENG@RICHCO-INC.COM (773) 539-4060		SEE TABLE	
REV. DESCRIPTION ENGR. DATE						PRINT TYPE <b>CA</b>	

D	SEE ECN #1337 FOR CHANGES	SK	07/10/07
C	SEE ECN #816 FOR CHANGES	SM	07/02/04
B	SEE ECN #477 FOR CHANGES	SM	10/02/02
A	FILE # WAS 02010	RG	11/16/00
REV.	DESCRIPTION	ENGR.	DATE

## X-ON Electronics

Largest Supplier of Electrical and Electronic Components

*Click to view similar products for [Standoffs & Spacers](#) category:*

*Click to view products by [ESSENTRA](#) manufacturer:*

Other Similar products are found below :

[588-6208-02](#) [599-9844-02](#) [M0516-3-N](#) [M0518-3-N](#) [M0521-3-N](#) [M0524-3-N](#) [M0532-35-N](#) [M0543-4-AL](#) [M0544-35-N](#) [M0544-3-N](#) [M0545-3-AL](#) [M0553-3-N](#) [M0608-5-SS](#) [M0609-5-SS](#) [M0651-5-SS](#) [M0653-35-N](#) [M0654-4-SS](#) [M0655-5-AL](#) [M0658-35-AL](#) [M0660-4-AL](#) [M0660-4-N](#) [M0670-35-N](#) [M0671-5-N](#) [M0671-5-SS](#) [M0722-5-N](#) [M0725-6-N](#) [M0904-B-25-AL](#) [M1273-2545-AL](#) [M1273-2545-SS](#) [M1273-3005-AL](#) [M1273-3005-SS](#) [M1274-3005-AL](#) [60187](#) [60202-SP](#) [60273](#) [60335-SP](#) [60348-SP](#) [60419-SP](#) [60425-SP](#) [60473-SP](#) [60475-SP](#) [60477-SP](#) [60489-SP](#) [60491-SP](#) [60585-SP](#) [60762-SP](#) [60763-SP](#) [60872-SP](#) [M1303-3506-AL](#) [M1307-3506-AL](#)