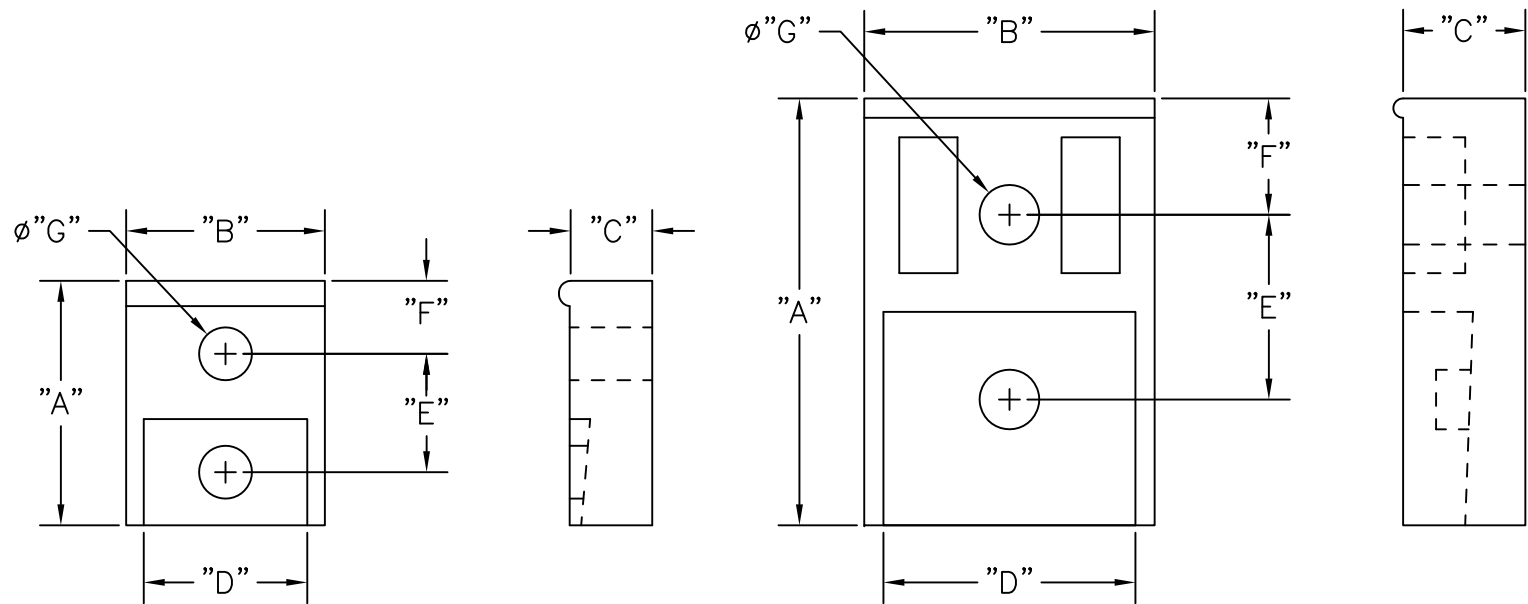





PART NO.	"A"	"B"	"C"	"D"	"E"	"F"	"G"	TRANSISTOR CASE STYLE	PACKAGE QUANTITY
HTRTC-1	.63 (16.0)	.51 (13.0)	.21 (5.4)	.42 (10.7)	.32 (8.0)	.19 (4.7)	.14 (3.5)	TO-220	1000
HTRTC-1A	.76 (19.3)	.51 (13.0)	.21 (5.4)	.42 (10.7)	.39 (10.0)	.24 (6.0)	.14 (3.6)	TO-220	
HTRTC-1C	.70 (17.8)	.51 (13.0)	.22 (5.5)	.42 (10.7)	.37 (9.3)	.19 (4.9)	.14 (3.5)	TO-220	
HTRTC-2	.75 (19.0)	.71 (18.0)	.24 (6.0)	.63 (16)	.41 (10.5)	.20 (5.0)	.14 (3.5)	TO-218	
HTRTC-3	1.10 (28.0)	.75 (19.0)	.32 (8.0)	.65 (16.5)	.50 (12.8)	.29 (7.4)	.15 (3.9)	TO-3P	200



ONLY FOR RTC-3

NOTES:

1. MATERIAL: FLAME RETARDANT P.B.T.
(RMS-110)
2. COLOR: WHITE.

		TITLE: HIGH TEMPERATURE RICHCO TRANSISTOR COVER						DWG IN IN (MM)	
EE CO 200361 FOR CHANGES		SK 04.30.09	TOLERANCES UNLESS NOTED .XX=±.008(±0.2)	FILE # HTRTC	DWN: S.M.	APP:	FINAL		
SEE ECN # 1106		SK 12.05.05		MAT'L: SEE NOTE	DT: 01/11/01	DT:	PART #		PRINT TYPE CA
CHANGED PART NAME TO HTRTC		SM 10.29.01		RE: RICHCO, INC.	RICHCO INC.		SEE TABLE		
PACKAGE 1000 WAS 500		SM 04.03.01			PO BOX 804238,CHICAGO,60680				
DESCRIPTION		ENGR DATE			(773) 539-4060				

X-ON Electronics

Largest Supplier of Electrical and Electronic Components

Click to view similar products for [Mounting Fixings](#) category:

Click to view products by [ESSENTRA](#) manufacturer:

Other Similar products are found below :

[5912235-2](#) [007541](#) [627](#) [M3783-7001](#) [71-074914-006](#) [75-69211-3P](#) [75-69214-6P](#) [75-69220-27S](#) [75-69224-5S](#) [7717-8DAP](#) [85043GULPR](#)
[85047GULPT](#) [85048GBESR](#) [FPK-02-R10](#) [PMS27488-001-01](#) [1-18023-0](#) [H-118-2](#) [DB1](#) [1302030464](#) [DC37-22-21PX](#) [1302010957](#)
[1302263564](#) [1302340393](#) [1404-0016-78](#) [14540](#) [1561-60](#) [1566](#) [1566](#) [BR16A](#) [HS4737-2001 REV G](#) [HS5659MB98PN](#) [NT20SATT01](#)
[201C5058-01-201 REV E](#) [22594-8](#) [KBB-141](#) [89078GBEPR](#) [89078GBESR](#) [915060](#) [SF4011-60101](#) [97-CS-50](#) [1671](#) [1855-54](#) [T-2085-SP](#)
[20800240002](#) [21899-4](#) [2193](#) [2518](#) [25745-1](#) [H-118-1](#) [354467](#)