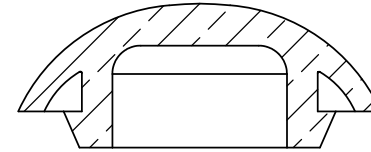
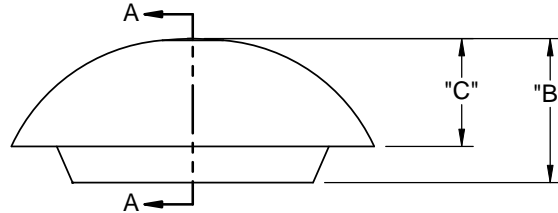
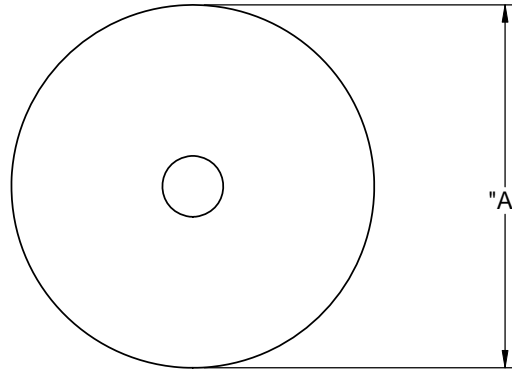


PART NO.	HEAD DIAMETER "A"	OVERALL HEIGHT "B"	HEAD HEIGHT "C" REF	MOUNTING HOLE DIAMETER
LTP-1	1.26 [32]	.500 [12.7]	.374 [9.5]	.875±.005 [22.23±0.13]
LTP-2	1.54 [39.2]	.539 [13.7]	.413 [10.5]	1.093±.005 [27.76±0.13]
LTP-3	1.82 [46.2]	.579 [14.7]	.433 [11]	1.375±.005 [34.93±.005]
LTP-4	.92 [23.4]	.449 [11.4]	.287 [7.3]	.500±.010 [12.7±0.25]
LTP-5	1.15 [29.2]	.512 [13]	.350 [8.9]	.750±.010 [19.1±0.25]
LTP-6	1.41 [35.8]	.559 [14.2]	.398 [10.1]	1.000±.010 [25.4±0.25]



SECTION A-A

NOTES:

1. MATERIAL: SILICONE RUBBER UL 94 V-0 (RMS-398)
2. COLOR: BLACK
3. MAXIMUM PANEL THICKNESS; .125 [3.2]
4. ALTERNATE UNITS FOR REFERENCE ONLY

G	SEE CO 200362 FOR CHANGES	SK	05/11/09	TITLE: LIQUID TIGHT PLUG					DWG IN IN [MM]		
F	SEE CO 200340 FOR CHANGES	SK	02/13/09	FILE #: LTP		DWN: BR	APP: BR				FINAL
E	SEE CO 200329 FOR CHANGES	SK	02/19/09	CREATED USING SOLIDWORKS	SHEET: 1 OF 1		SHEET SIZE: A	DT: 06/06/06	CHKD: DJZ	PART #	PRINT TYPE
D	SEE CO 200303 FOR CHANGES	SK	01/06/09	TOLERANCES UNLESS NOTED	RE: RICHCO, INC.		RICHCO, INC. ENG@RICHCO-INC.COM (773) 539-4060		SEE TABLE		
C	SEE ECN #1298 FOR CHANGES	SK	03/16/07	.XX=±.010							
B	SEE ECN #1294 FOR CHANGES	SK	03/07/07	.XXX=±.005							
A	RELEASED FOR PRODUCTION	SK	08/31/06	FRAC.=±1/64							
REV.	DESCRIPTION	ENGR.	DATE	ANG.=±1°							

## X-ON Electronics

Largest Supplier of Electrical and Electronic Components

*Click to view similar products for [Conduit Fittings & Accessories](#) category:*

*Click to view products by [ESSENTRA](#) manufacturer:*

Other Similar products are found below :

[M3231GAB](#) [M3231GAC](#) [M3231GAE](#) [M3231GL](#) [M3231GN](#) [M3231GT](#) [VC-937-16/RED](#) [VC-562-16/RED](#) [VC-1125-16/RED](#) [DM0240-1/2A](#) [3408B](#) [G6002](#) [M4340GAE](#) [C2016-P](#) [C2012-P](#) [3407B](#) [561-87BG11BLK](#) [561-75BG11B](#) [1.533.1201.50](#) [1.533.1601.51](#) [1.533.2001.51](#) [1.533.4001.50](#) [1.533.5001.50](#) [BVNV-P428](#) [BVBV-P366](#) [VC-687-16/RED](#) [2276](#) [2663-P](#) [3405B](#) [C2070-P](#) [3582V](#) [2643-P](#) [4975](#) [2644-P](#) [2955](#) [M50](#) [2404-P](#) [C2008-P](#) [2723-P](#) [2291](#) [2133-P](#) [3048F](#) [VC12516](#) [RC156-0500](#) [DM0523-1/2A](#) [1035A](#) [DMS0250-1A](#) [DMS0313-1A](#) [1040A](#) [1050A](#) [R1/8A](#)