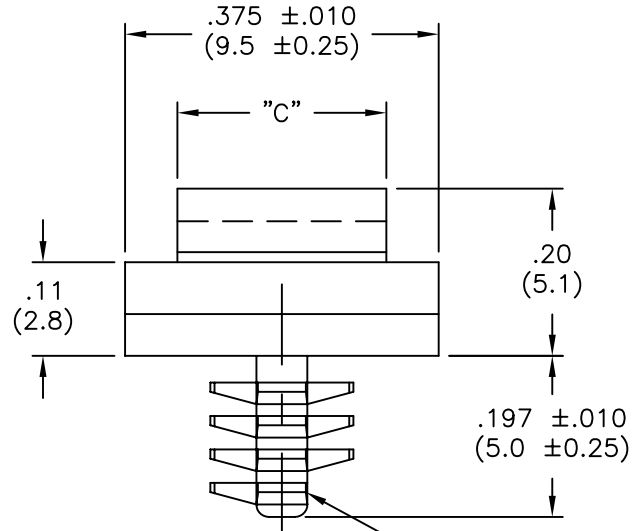
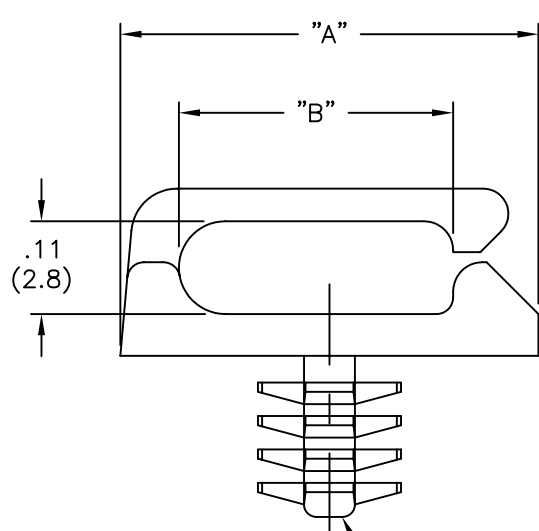


| PART NO. | "A"±.010 (±0.25) | "B"±.010 (±0.25) | "C"±.010 (±0.25) |
|---------------|---------------------|---------------------|---------------------|
| MBHWSSE-1-01 | .50 (12.7) | .33 (8.3) | .25 (6.4) |
| MBHWSSE1-1-01 | .67 (17.0) | .49 (12.5) | .315 (8.0) |



TO PRESS FIT IN A $.156 \pm .003$
(3.96 ± 0.08) DIA. HOLE, IN A
.04 TO .16 (1.00 TO 4.06)
THICK PANEL.

TYPICAL EJECTOR
PIN LOCATION
(SEE NOTE 3.)

NOTES:

1. MATERIAL: NYLON 6/6, RMS-01.
FLAME RETARDANT NYLON (RMS-19)
AVAILABLE BY SPECIAL ORDER.
2. COLOR: NATURAL.
3. FIN WILL ONLY APPEAR ON LEFT
OR RIGHT SIDE, IN THIS VIEW

| | | |
|-----|---------------------------|-------------|
| B | SEE ECN #1354 FOR CHANGES | SK 08.20.07 |
| A | SEE ECN #503 FOR CHANGES | SM 10.25.02 |
| REV | DESCRIPTION | ENGR DATE |

| | | | | | | | | | |
|---|--|------------------|--|----------------|--|-----------|--|------------|--|
| TITLE: MICRO-BLIND HOLE, WIRE SADDLE, SIDE ENTRY | | | | DWG IN IN (MM) | | FINAL | | PRINT TYPE | |
| TOLERANCES UNLESS NOTED .XX=±.010 .XXX=±.005 FRAC=1/64 ANG=1° | | FILE # MBHWSSE | DWN: S.M. | APP: | | PART # | | CA | |
| | | MAT'L: SEE NOTES | DT: 3/23/01 | DT: | | SEE TABLE | | | |
| | | RE: RICHCO, INC. | RICHCO INC. PO BOX 804238, CHICAGO, 60680 (773) 539-4060 | | | | | | |

X-ON Electronics

Largest Supplier of Electrical and Electronic Components

Click to view similar products for [Cable Mounting & Accessories](#) category:

Click to view products by [ESSENTRA](#) manufacturer:

Other Similar products are found below :

[582603-1](#) [009333-000](#) [727844N003](#) [747](#) [809090N001](#) [843188-000](#) [8666](#) [967279N002](#) [DB-11](#) [1300840039](#) [1300900096](#) [1301800416](#)
[1302264450](#) [1300830184](#) [1300830729](#) [1300900039](#) [1301580036](#) [1301850553](#) [1301860939](#) [1302000074](#) [1302261315](#) [1302264431](#)
[1337706-2](#) [APA18-AK](#) [1724](#) [1-787307-1](#) [185491N001](#) [1868](#) [HP-6N](#) [C-202-C](#) [202C221-13-0](#) [CA7308-000](#) [8S23-75FR-CS8184](#) [2684](#) [9648](#)
[3089](#) [988382-000](#) [A72821-000](#) [AA401](#) [173506-000](#) [1823](#) [202C292-13-0](#) [202C302-13-0](#) [2109](#) [300625](#) [3330](#) [3412](#) [356247-1](#) [M9142](#)
[M9143](#)