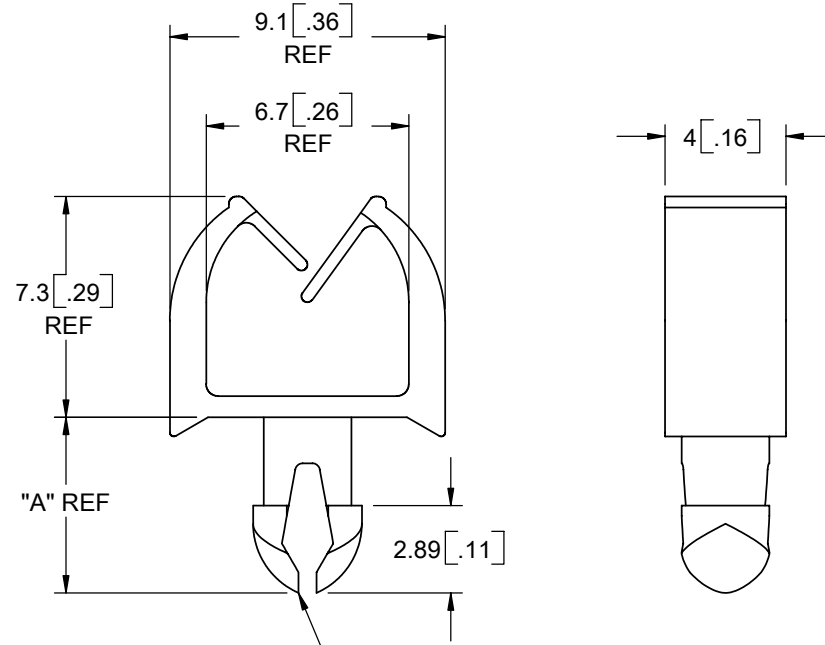


NYLON 6/6 UL 94 V-2 (RMS-01). COLOR: NATURAL. PART NO.	NYLON 6/6 UL 94 V-0 (RMS-19). COLOR: NATURAL. PART NO.	DIM. "A"	PANEL THICKNESS RANGE
MWSET2-1-01	MWSET2-1-19	4.29 [.169]	1-1.2 [.039-.047]
MWSET2-2-01	MWSET2-2-19	4.79 [.189]	1.2-1.6 [.047-.063]
MWSET2-3-01	MWSET2-3-19	5.05 [.199]	1.4-1.8 [.055-.071]
MWSET2-4-01	MWSET2-4-19	5.81 [.229]	2.2-2.6 [.087-.102]



TO SNAP-LOCK IN A 3±0.05 [.118±.002] HOLE DIA.,  
IN A PANEL THICKNESS INDICATED

NOTES:  
1. ALTERNATE UNITS FOR REFERENCE ONLY

D			TITLE: MICRO WIRE SADDLE, TEARDROP				DWG IN IN [MM]		FINAL	
REV.	DESCRIPTION	ENGR. DATE	CREATED USING SOLIDWORKS	FILE #: MWSET2-X	DWN: SK	APP: RT				
-	SEE ECN #1192 FOR CHANGES	SK 07/12/06	GENERAL TOLERANCE UNLESS NOTED	SHEET: 1 OF 1	SHEET SIZE: A	DT: 07/11/06	CHKD: DZ	PART #		PRINT TYPE
-	SEE ENGINEERING FOR REV A -C	--	±0.25	RE: RICHCO, INC.		RICHCO, INC.		SEE TABLE		CA
-			ANG.±1°			ENG@RICHCO-INC.COM (773) 539-4060				

## X-ON Electronics

Largest Supplier of Electrical and Electronic Components

*Click to view similar products for [Cable Mounting & Accessories](#) category:*

*Click to view products by [ESSENTRA](#) manufacturer:*

Other Similar products are found below :

[582603-1](#) [009333-000](#) [727844N003](#) [747](#) [809090N001](#) [843188-000](#) [8666](#) [967279N002](#) [DB-11](#) [1300840039](#) [1300900096](#) [1301800416](#)  
[1302264450](#) [1300830184](#) [1300830729](#) [1300900039](#) [1301580036](#) [1301850553](#) [1301860939](#) [1302000074](#) [1302261315](#) [1302264431](#)  
[1337706-2](#) [APA18-AK](#) [1724](#) [1-787307-1](#) [185491N001](#) [1868](#) [HP-6N](#) [C-202-C](#) [202C221-13-0](#) [CA7308-000](#) [8S23-75FR-CS8184](#) [2684](#) [9648](#)  
[3089](#) [988382-000](#) [A72821-000](#) [AA401](#) [173506-000](#) [1823](#) [202C292-13-0](#) [202C302-13-0](#) [2109](#) [300625](#) [3330](#) [3412](#) [356247-1](#) [M9142](#)  
[M9143](#)