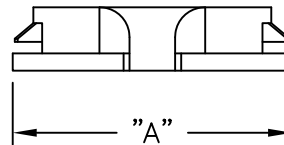
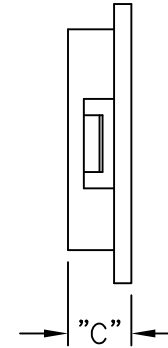
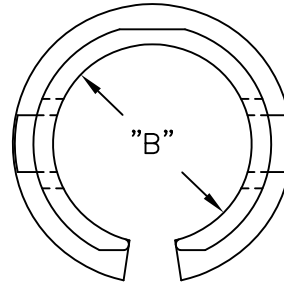


PART NO.	PANEL THKNS. RANGE	HOLE DIAMETER	"A" REF.	MAX HOLDING BUNDLE DIA. "B"	"C"	PACKAGE
PGSA-0407A	.016-.039 (0.4-1.0)	.272±.004 (6.9±0.1)	.39 (9.8)	.19 (4.8)	.20 (5.0)	1000
PGSA-1013A	.039-.059 (1.0-1.5)	.512±.004 (13±0.1)	.61 (15.5)	.38 (9.6)	.21 (5.4)	500
PGSA-1316A	.039-.055 (1.0-1.4)	.630±.004 (16±0.1)	.72 (18.4)	.49 (12.5)	.21 (5.4)	
PGSA-1519A	.039-.059 (1.0-1.5)	.748±.004 (19±0.1)	.86 (21.8)	.59 (14.9)	.22 (5.7)	
PGSA-1822A	.031-.063 (0.8-1.6)	.866±.004 (22±0.1)	.97 (24.6)	.69 (17.6)	.22 (5.6)	
PGSA-2024A1	.031-.039 (0.8-1.0)	.945±.004 (24±0.1)	1.02 (26.0)	.79 (20.0)	.21 (5.4)	
PGSA-2024A	.039-.047 (1.0-1.2)		1.02 (26.0)	.79 (20.0)	.21 (5.3)	
PGSA-2327A	.016-.039 (0.4-1.0)	1.063-1.071 (27.0-27.2)	1.20 (30.6)	.91 (23.0)	.24 (6.0)	200
PGSA-2529A	.016-.043 (0.4-1.1)	1.142±.004 (29±0.1)	1.28 (32.6)	.98 (25.0)	.28 (7.0)	200



NOTES:

- MATERIAL: NYLON 6/6 UL 94 V-2 (RMS-01).  
NYLON 6/6 UL 94 V-0 (RMS-19),  
AVAILABLE BY SPECIAL ORDER. TO ORDER ADD  
"-V0" TO THE PART NO.
- COLOR: BLACK.

TITLE: OPEN/CLOSED BUSHINGS [A SERIES]					DWG IN IN (MM)		
E	SEE CO 200331 FOR CHANGES	SK 02.24.09	TOLERANCES UNLESS NOTED	FILE # PGSA	DWN: P.B.	APP:	FINAL
D	SEE CO 200208 FOR CHANGES	SK 06.30.08	.XX=±.010	MAT'L: SEE NOTES	DT: 07-18-95	DT:	PART #
C	SEE ECN #686 FOR CHANGES	SM 08.18.03	.XXX=±.005	RE: RICHCO, INC.	RICHCO INC. PO BOX 804238, CHICAGO, 60680 (773) 539-4060		SEE TABLE
B	SEE ECN #642 FOR CHANGES	SM 06.11.03	FRAC=±1/64				PRINT TYPE
A	CHANGED FILE NO. AND TITLE BLOCK	SM 08.21.02	ANG=±1'				CA
REV	DESCRIPTION	ENGR DATE					

## X-ON Electronics

Largest Supplier of Electrical and Electronic Components

*Click to view similar products for [Grommets & Bushings](#) category:*

*Click to view products by [ESSENTRA](#) manufacturer:*

Other Similar products are found below :

[M10-036565-101](#) [M10-036565-143](#) [M10-036565-183](#) [205339-4](#) [M10-036565-122](#) [M10-036565-163](#) [3-1991136-0](#) [561-FGUP0850B](#) [561-MP13716](#) [561-FGUP0400N](#) [1398081-1](#) [1301800320](#) [M10-036565-232](#) [2298](#) [4014B](#) [2407](#) [2141-P](#) [HTL-40-10-TPE](#) [2417-P](#) [2917-P](#) [3108-P](#) [2871-P](#) [1342664](#) [60466](#) [50687](#) [12468](#) [51409](#) [12462](#) [15517](#) [60752](#) [60218](#) [12463](#) [BDE 21](#) [BDE 29](#) [HSS-M12-TPE RAL9005](#) [HSS-M16-TPE RAL9005](#) [HSS-M25-TPE RAL9005](#) [HSS-M20-TPE RAL9005](#) [HTT-21 RAL7035](#) [HTT-21-V0](#) [BDE 11](#) [BDE 13](#) [BDE13](#) [BDE 16](#) [SRF42](#) [100187](#) [100188](#) [100216](#) [100223](#) [100236](#)