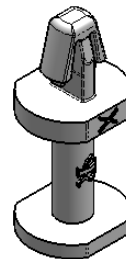
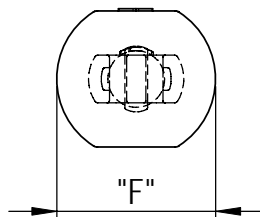
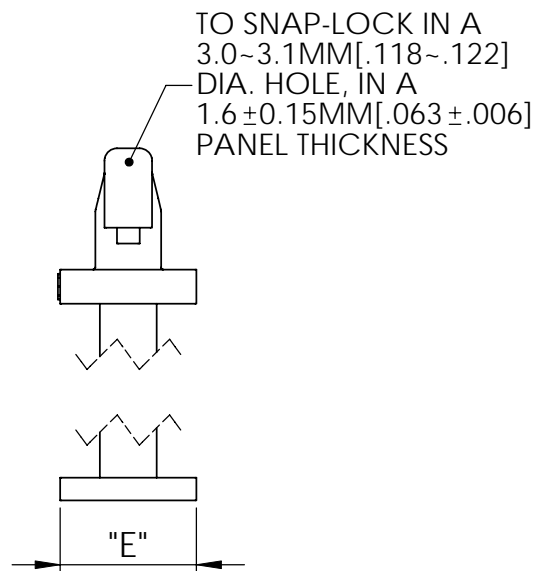
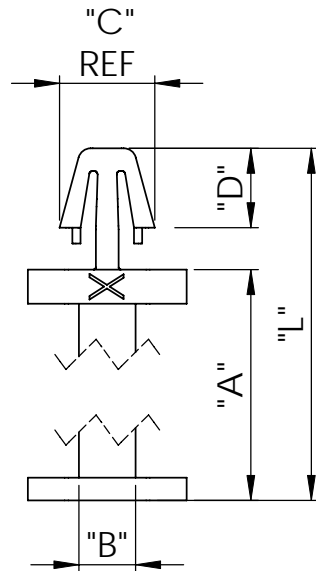


NYLON 6/6 (RMS-01) PART NO.	NYLON 6/6 (RMS-19) PART NO.	"A" ±0.3 [±.012]	"B" ±0.2 [±.008]	"C" REF	"D" ±0.2 [±.008]	"E" ±0.2 [±.008]	"F" ±0.3 [±.012]	"L" ±0.3 [±.012]
PSD-4M-01	PSD-4M-19	4.0 [.157]	∅2.5 [∅.098]	4.2 [.165]	3.5 [.138]	6.0 [.236]	∅7.0 [∅.276]	9.35 [.368]
PSD-6M-01	PSD-6M-19	6.0 [.236]						11.35 [.447]
PSD-7M-01	PSD-7M-19	7.0 [.276]						12.35 [.486]
PSD-8M-01	PSD-8M-19	8.0 [.315]						13.35 [.526]
PSD-10M-01	PSD-10M-19	10.0 [.394]						15.35 [.604]
PSD-12M-01	PSD-12M-19	12.0 [.472]						17.35 [.683]
PSD-14M-01	PSD-14M-19	14.0 [.551]						19.35 [.762]
PSD-18M-01	PSD-18M-19	18.0 [.709]						23.35 [.919]



NOTES:
1, MATERIAL: SEE TABLE
2, COLOR: NATURAL
3, ALTERNATE UNITS FOR REFERENCE ONLY

B	SEE CO220069 FOR CHANGES	J.T 12.01.10
A	RELEASED FOR PRODUCTION	J.T 02.24.10
R E V.	DESCRIPTION	ENGR. DATE

TITLE: **PUSH SPACER**



CREATED USING SOLIDWORKS	FILE #: PSD	DWN: J.T	APP: J.T	FINAL
TOLERANCES UNLESS NOTED	SHEET: 1 OF 1	SHEET SIZE: A	DT: 07.14.09	CHKD: -
DIM ±: SEE TABLE ANG.=±1°	RE: RICHCO --	RICHCO WWW.RICHCO-INC.COM (+86) 592-6884500		PART # SEE TABLE
				PRINT TYPE CA

X-ON Electronics

Largest Supplier of Electrical and Electronic Components

Click to view similar products for [Circuit Board Hardware - PCB category](#):

Click to view products by [ESSENTRA manufacturer](#):

Other Similar products are found below :

[8919-0-00-15-00-00-03-0](#) [0135-0-15-01-30-27-04-0](#) [5970-1-15-01-32-14-04-0](#) [0149-0-15-15-30-27-04-0](#) [7305-0-15-15-47-14-10-0](#) [MLN](#)
[150/1 BLACK](#) [8579-0-15-80-11-27-10-0](#) [8579-1-15-15-11-27-10-0](#) [8830-0-15-01-22-14-10-0](#) [8836-0-00-21-00-00-03-0](#) [PRUEF 1 RED](#)
[PRUEF 2 RED](#) [9976-0-00-00-00-00-03-0](#) [PW1616](#) [1215-3-05-00-00-00-01-0](#) [1231](#) [1303-0-15-15-47-14-04-0](#) [1404-3](#) [1404-4](#) [1406-4](#) [1407-3](#)
[1407-4](#) [1408-3](#) [1424-4](#) [1427-3](#) [1419-4](#) [1426-4](#) [MPS 1 BLACK](#) [1548-103](#) [1938-0-00-00-00-00-03-0](#) [1942-0-00-00-00-00-03-0](#) [2101-3-](#)
[00-44-00-00-07-0](#) [2108-2-00-50-00-00-07-0](#) [2109-2-00-44-00-00-07-0](#) [2110-2-00-44-00-00-07-0](#) [2111-2-00-00-00-00-07-0](#) [2113-4-00-44-00-](#)
[00-07-0](#) [2301-3-00-44-00-00-07-0](#) [2308-1-00-50-00-00-07-0](#) [2313-2-00-00-00-00-07-0](#) [2315-2-01-44-00-00-07-0](#) [2317-2-00-50-00-00-07-0](#)
[2333-1-00-50-00-00-07-0](#) [9000-0-00-00-00-00-03-0](#) [2506-2-00-50-00-00-07-0](#) [2507-2-01-44-00-00-07-0](#) [2508-2-00-44-00-00-07-0](#) [2561-2-](#)
[00-44-00-00-07-0](#) [9220](#) [9234-0-15-15-30-14-10-0](#)